

CITY OF IRONWOOD

RECREATION PLAN

2001 - 2006

ADOPTED: FEBRUARY 28, 2003

CHAPTER 1 INTRODUCTION

The 2001 - 2006 City of Ironwood Park and Recreation Plan has been written to guide future park and recreation development and activities within the City. The intent of this Plan is to establish recreational goals, review the condition(s) of existing facilities and to establish an agenda for future facility improvements.

An essential component of this plan is public participation. A community survey was conducted to determine the community's park and recreation needs and priorities (see Appendix A). A key element of this plan is to design a systematic, objective approach to park and recreation decision making that will satisfy the greatest majority of city residents.

Park and recreational opportunities are being recognized as increasingly important elements of community life. They provide positive leisure time activities for all age groups within the City, and assist in improving the quality of life for all residents.

This Plan proposes a range of park improvements in the City, that will require financial assistance from various state and federal grant programs, as well as private donations and fund raising. The City of Ironwood is not in the financial position to entirely fund this program. Therefore, innovative financing will be required from as many sources as possible.

CHAPTER 2

COMMUNITY DESCRIPTION

LOCATION

The City of Ironwood is located at the western end of Michigan's Upper Peninsula, as shown in Figure A. It is located approximately 15 miles south of Lake Superior, on the Michigan-Wisconsin border. The City encompasses 5.8 square miles or roughly 3,700 acres. The City acts as a regional service center, and is larger than any community within 100 miles. The closest metropolitan area is Duluth, Minnesota, 100 miles to the west.

LAND USE

The City's land use is predominantly residential. Within the residential areas, there are various public and institutional uses, such as schools, parks, playgrounds, churches and city facilities. This plan intends on supporting park and recreation opportunities in close proximity to residential areas, in order for the facilities to be as user friendly as possible.

Commercial land uses are located in the historic downtown area, along Business Route 2 and along US-2. Additional lesser commercial land uses are spread throughout the City.

Industrial development is primarily located in the City of Ironwood Industrial Park located in the northeast section of the City. Other smaller industrial sites are located in other sections of the City.

Two railroad rights-of-way bisect the City. Both rail lines have been abandoned. One of these rights-of-way is already being used for a recreational trail.

See Figure B for the existing land use pattern of the City.

ZONING

The zoning pattern of the City closely matches the existing land use pattern. Most of the City is zoned for residential purposes. Commercial districts are located in the downtown area and along the highways. Industrial districts are located in the industrial park and in previously abandoned mining sites.

Figure C shows the City's Zoning Map.

TOPOGRAPHY AND DRAINAGE

The topography of the City is gently rolling to the north and steep to very steep to the south. The elevation ranges from 1420 feet above sea level at its northwest corner to 1750 feet on the top of Newport Hill near its east boundary. There are plenty of opportunities for sledding hills, recreational trails and other outdoor recreational opportunities from the hilly terrain located in the City.

The City's soils are generally well drained and appropriate for recreational development. Some of the City's soils are low and poorly drained as shown in Figure D. These areas will not be developed for active recreational development, but may be good sites for nature areas, nature trails and interpretive activities.

WATER RESOURCES

The Montreal River serves as the City's western limits. The river flows from the south, through the City and eventually flows into Lake Superior. The shores of the Montreal River contain fascinating topography, vegetation and wildlife. The Montreal River has excellent potential for recreational uses along its shoreline. Potential uses include trails, nature areas, interpretive areas, fishing access and boating access.

POPULATION AND POPULATION TRENDS

According to the 2000 Census, the City's population is 6,293. This compares to 6,849 in 1990 and 7,741 in 1980. The City's population has been on a decline since the 1920's when iron mining was at its peak, and the City had a population of nearly 16,000 (See Figure E). It is anticipated that the City's population will continue to decline slightly or stabilize over the life of this Plan.

SOCIAL CHARACTERISTICS

AGE - The City's population is relatively old. The median age is 41.3 years, compared to the State of Michigan's median age of 32.6. Twenty-seven percent of the City's residents are over the

age of 65. Because of the City's relatively old population, future park and recreation planning must take into account this population's requirements. Park improvements should include walkways, benches and other more passive recreational uses to cater to this age group.

However, there is still a sizable young population in need of various recreational opportunities. More than 22% of the City's residents are under 18 years of age. In addition, over 50% of the population is between the ages of 18 and 64. To cater to these population groups, more active recreational activities serving the entire family should also be pursued.

SEX - The City's population has slightly more females than males, with 54% of the City's residents being females.

RACE AND ETHNICITY - The City's population is predominantly white (99.2%). Other races include American Indian (12 persons), Asian/Pacific Islander (two persons), African American (two persons), and "other" (three persons). A total of eight persons are of Hispanic origin.

The City's ethnic origins are varied. The greatest number of ancestries reported in the 1990 Census is Finnish (1,996), German (1,267), Italian (1,145), Swedish (932) and Polish (907).

DISABILITY - Of persons between the ages of 16 and 64, 84 persons (or 2.2%) have a mobility limitation. Of those 65 years and above, there are 204 persons (or 12.1%) with a mobility limitation. The special needs of this population group must also be considered when designing park facilities. All facilities should be fully accessible to persons with mobility disabilities.

EMPLOYMENT - Of the 2,526 employed persons 16 years of age and over, 664 workers (or 26.3%) are employed in the retail trade industry. Other major industries include health services (343 workers), educational and professional services (321 workers), manufacturing (271 workers) and general service industries (176 workers).

EDUCATION - Ironwood City residents have a high percentage of persons who have received a high school diploma. Over 75% of persons 25 years of age and over are high school graduates. Over 10% of the population has received a bachelor's degree or higher.

CHAPTER 3
RECREATION INVENTORY

This section identifies the existing park and recreation facilities in the City at this time. Each of the City's park areas has been identified and evaluated. Table 1 identifies the major park facilities in the City while Figure F shows the location of these facilities. Table 2 itemizes the various public, private and school park and recreation facilities located in the City.

Table 3 shows the regional park and recreation opportunities located within close proximity to Ironwood.

Table 4 compares the City's park and recreation facilities to State of Michigan adopted standards.

CHAPTER 4 PLANNING PROCESS

The planning process used in the creation of this park and recreation plan places a great deal of emphasis on public participation. The plan was initially drafted by the City of Ironwood Recreation, Cultural and Life Enrichment Committee. This Committee was created by resolution of the City Commission with the express purpose of drafting a Park and Recreation Plan.

The Recreation, Cultural and Life Enrichment Committee met monthly for a full year to draft the initial plan. All meetings were open to the public and fully advertised through the local media. Members of the Recreation, Cultural and Life Enrichment Committee represented a cross-section of the community. Staff support for the committee was given by William Andresen, Community Development Director.

One of the initial steps of the Recreation, Cultural and Life Enrichment Committee was the distribution of a recreation survey. The purpose of the recreation survey was to learn the public's priorities as they relate to parks and recreation opportunities. The survey was distributed to one in every four homes within the City and to student body leaders at the local high school. The committee received a response of over 200 City residents, which represents an excellent rate of return.

The complete survey results are shown in Appendix A. The survey results are classified by whether the respondent has children, the age of the respondent and the location of the respondent's home. The information collected from this survey proved to be very useful during the planning process.

After reviewing the survey results, the Committee decided that the top priority of the City regarding parks and recreation was the need to improve and better maintain existing parks. Top facilities that the survey respondents desired to be developed included rest room facilities (51.5%), walking paths (48.5%), bike paths (40.9%), outdoor swimming (36.3%), nature area/nature trails (34.5%), basketball courts (33.3%) and sledding hills (31.0%). Eighty percent of the respondents supported bike paths and walking trails throughout the City.

Based on the results of the park and recreation survey, the Recreation, Cultural and Life Enrichment Committee prepared a

draft version of the Park and Recreation Plan. After several meetings, the Plan was approved by the committee and submitted to the City Commission for formal adoption.

In 2001, the initial plan was updated based on changes made to the park system, updated census figures and the changing needs of the community. The Plan was then made available for review by the public at the Office of the City Clerk.

On February 28, 2003, the City Commission passed a resolution adopting the updated five year City of Ironwood Park and Recreation Plan (See Appendix B for a copy of all meeting minutes and the Resolution of Plan Adoption).

CHAPTER 5

BASIS FOR ACTION PROGRAM

The 2001 - 2006 Ironwood Park and Recreation Plan is a realistic plan based on the results of the community recreation survey, numerous public meetings and citizen involvement. It is also largely based on the improvements made to the park system since the adoption of the original recreation plan.

The major emphasis of the original plan was to improve the existing city park system. Very significant improvements have been made to the parks since the adoption of the 1996 - 2001 Parks and Recreation Plan, including: Norrie Park Riverfront trails, restrooms and pavilion improvements; Longyear Park Band Shell; Curry Park Campground and building improvements; Lake/Ayer Playground improvements; and Kuitunen Park improvements.

The community has embraced these improvements as evidenced by on-going efforts to make further park improvements. In the City's two major parks, Longyear and Norrie Parks, various community groups have initiated park improvement projects designed to further enhance the parks.

For example, in 1999, the community raised \$35,000 for a band shell in Longyear Park. Since that time, three community based projects have begun. First, the Community Hospice Foundation developed a flower planting and flagpole project. Second, the Friends of Ironwood Parks initiated a playground and basketball court project at a cost of \$40,000. And finally, a neighbor has committed the funds for improvements to the park's much needed bike/walking paths. These projects will be completed by the fall of 2001.

Likewise, once the City completed the Norrie Park Riverside Improvement Project (funded by a \$53,700 Michigan Natural Resources Trust Fund Grant), three community groups have stepped forward to make additional improvements to the park. First, the Gogebic-Ontonogan Community Action Agency wrote and received a \$12,000 grant to create a community vegetable garden in Norrie Park. And secondly, the local running club and a nearby cross-country ski trail system have partnered with the City to expand the trail system for both summer and wintertime use. Both of these projects will be completed by the fall of 2001.

The Action Program intends on building on the success of the past to create enhanced park opportunities in the City's two major parks. Based on the survey results, the community's top two choices for park improvements were Norrie Park (61%) and Longyear Park (38%). Specific facility improvements for each park are also based on the results of the community recreation survey.

One of the leading park facilities owned by the City of Ironwood is Norrie Park. The park is located along the banks of the Montreal River, and offers excellent outdoor-based recreational opportunities, such as fishing, boating, swimming, hiking, skiing, picnicking and camping. Many of these improvements were put into place with the MNRTF grant.

Additional improvements to Norrie Park include the development of a campground, with a campground host and improvements to the swimming beach. These improvements will meet the needs of the community based on the results of the recreation survey and will make the park a major regional draw. A campground would also generate revenue to be used for park maintenance, and would greatly improve park security.

Longyear Park is centrally located within the City, and easily accessible from the chief residential areas of the City. It is a well-established park that has the distinct advantage of being surrounded by residential housing on three sides. This increases the usage and visibility of the park, and helps to reduce vandalism. Now that many park improvements are in place, or nearly complete, including the band shell, playground improvements, basketball courts and improved bike/walking paths, the park will receive a significant increase in use. Therefore, it is important to offer restroom facilities at this site. This amenity was the number one improvement desired by the residents, according to the recreation survey.

Another major element of the Action Program is the development of a community-wide trail system to connect parks, schools, residential areas and the downtown. The system would use the former Chicago-Northwestern Railroad corridor that the State of Michigan currently holds a recreational easement on. The trails would connect Depot Park in the downtown to the largest part of the community. The Depot Park area would serve as an excellent trailhead to this system. Bike and walking trails were two of the top requested facilities in the recreation survey. Trails would serve all age groups in the City and would provide many

different recreational options, including walking, biking, rollerblading and skateboarding opportunities.

Because of the high cost of this project, it is proposed to be handled in three phases. Phase I would include the area from the Depot to the high school. This area would have the greatest usage because of its proximity to the downtown, residential areas and the high school. The plan proposes enhancing this corridor with other amenities, such as landscaping, seating and a much needed skateboard park.

Phase II would connect the downtown to nearby Hurley, Wisconsin to the West. Phase III would connect the high school to the City limits to the East. Total project cost for all three phases is approximately \$135,000. Possible funding would come from a variety of sources, including MNRTF and TEA-21 monies.

The final year of the plan calls for improvements to the Depot area. Located between Kuitenan Park and the Ironwood Depot Museum is a tract of land currently owned by the Wisconsin Central Railroad. If the railroad is abandoned in the future, this property should be acquired for recreational purposes, such as walking/biking trails, seating area, picnic tables and landscaping. Improvement of this area will also greatly enhance the community trail system. This parcel is centrally located and highly visible and would provide passive and active recreation opportunities to residents and visitors of all ages. Acquisition and development of this parcel could be funded by several grant programs, including the MNRTF and TEA-21.

**CHAPTER 6
ACTION PROGRAM**

This section details the five-year action program for the City. The action program is based on considerable public input including a community recreation survey. The rationale for this action program is more fully described in Chapter 5.

~~The action program calls for a focus on improvements to the two major parks in the City's park system, and the development of a community trail system. Funding for this program is intended to come from a variety of sources, including state and federal grants, donations, fund raising and city contributions, as shown in Table 5.~~

Table 5
CAPITAL IMPROVEMENT SCHEDULE

YEAR	PROJECT	COST	FUNDING SOURCE
2001	Longyear Park Playground Improvements, Basketball Courts and Bike Paths ✓	\$65,000	1,4
	Norrie Park Trail Expansion ✓	\$10,000	4
	Norrie Park Community Garden ✓	\$12,000	1,4
2002	Longyear Park Restrooms NO	\$20,000	1,4
	Phase I of Recreational Trail (including seating, landscaping & skateboard park) NO	\$60,000	1,2,3,4,5
2003	Phase II of Recreational Trail	\$30,000	1,2,3,5

Norrie Park Well, Campgrounds \$85,000 1,2,3
and Beach Improvements

Updates to the Pat O'Donnell \$75,000 4,6
Civic Center

2004 Phase III of Recreational \$45,000 1,2,3,5
Trail

2005 Depot Area Park Development \$30,000 1,4

Funding

Sources: 1 - City of Ironwood
2 - Michigan Natural Resources Trust Fund
3 - Land and Water Conservation Fund
4 - Private Sources (fund raising, donations, etc)
5 - Transportation Efficiency Act (TEA-21)
6 - Foundation Grants

CHAPTER 7
ADMINISTRATIVE STRUCTURE

The Ironwood City Commission appointed a Recreation, Cultural and Life Enrichment Committee to develop the initial Park and Recreation Plan. The Ironwood Planning Commission makes recommendations to the City Commission regarding capital improvements, and was also responsible for the update of the Park and Recreation Plan. All Planning Commission meetings are open to the public, and are advertised in the local media.

Recently, a Friends of Ironwood Parks committee has been formed. The purpose of this committee is to help identify park needs, educate the public on park related issues, help design future park projects and assist with fund-raising efforts. The committee is comprised of a combination of school officials, city officials and interested residents.

The City Commission has the final decision making authority as it pertains to parks and recreation funding.

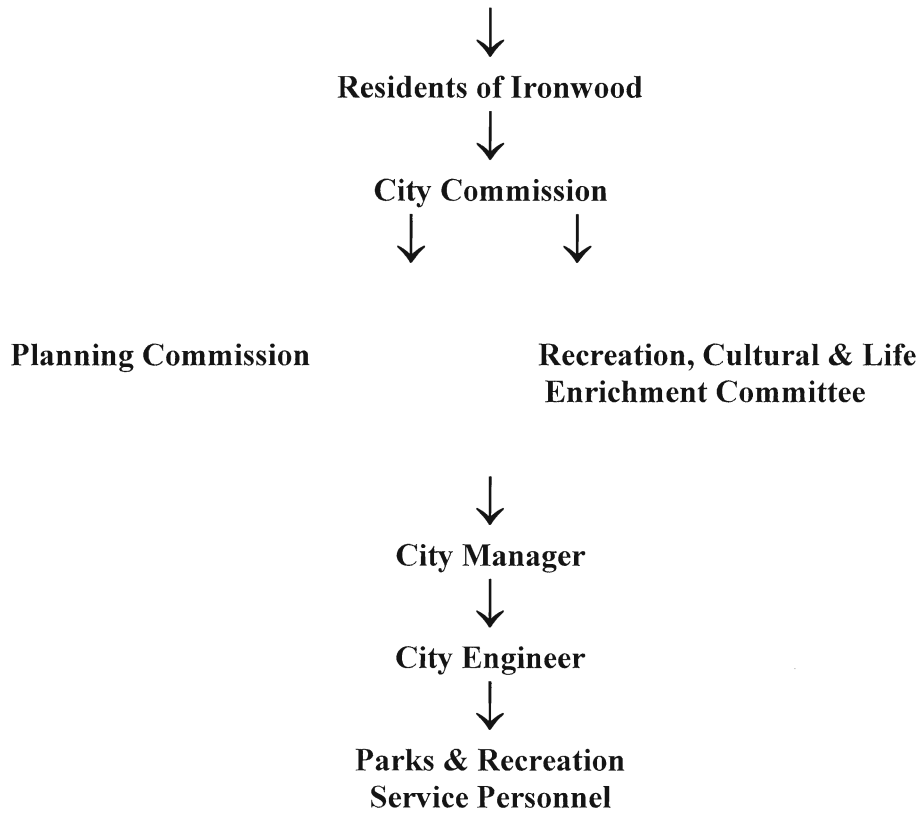
Parks and playgrounds are maintained by City crews. During the summer months, the Parks and Recreation Director is in charge of summer youth workers responsible for park maintenance. Routine park and cemetery mowing services are contracted out to local businesses.

Volunteers from local organizations regularly assist the City with maintenance, especially at the four ball fields, the Civic Center and Norrie Park. Various organizations have donated a considerable amount of time and money over the past several years to park and recreation improvements and programming.

The current year budget for park and recreation programming, development and maintenance is \$108,891.00. Of this, approximately \$11,000.00 is available for facility development.

The organizational chart of the City as it pertains to park and recreation decision-making and maintenance is shown in Figure G.

ADMINISTRATIVE STRUCTURE

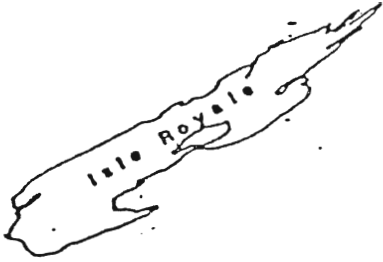


REGIONAL PLANNING AND DEVELOPMENT COMMISSION:

Western Upper Peninsula Planning and Development Region
P.O. Box 365
Houghton, MI. 49931
(906) 482-7205

Figure G

FIGURES



Location Map

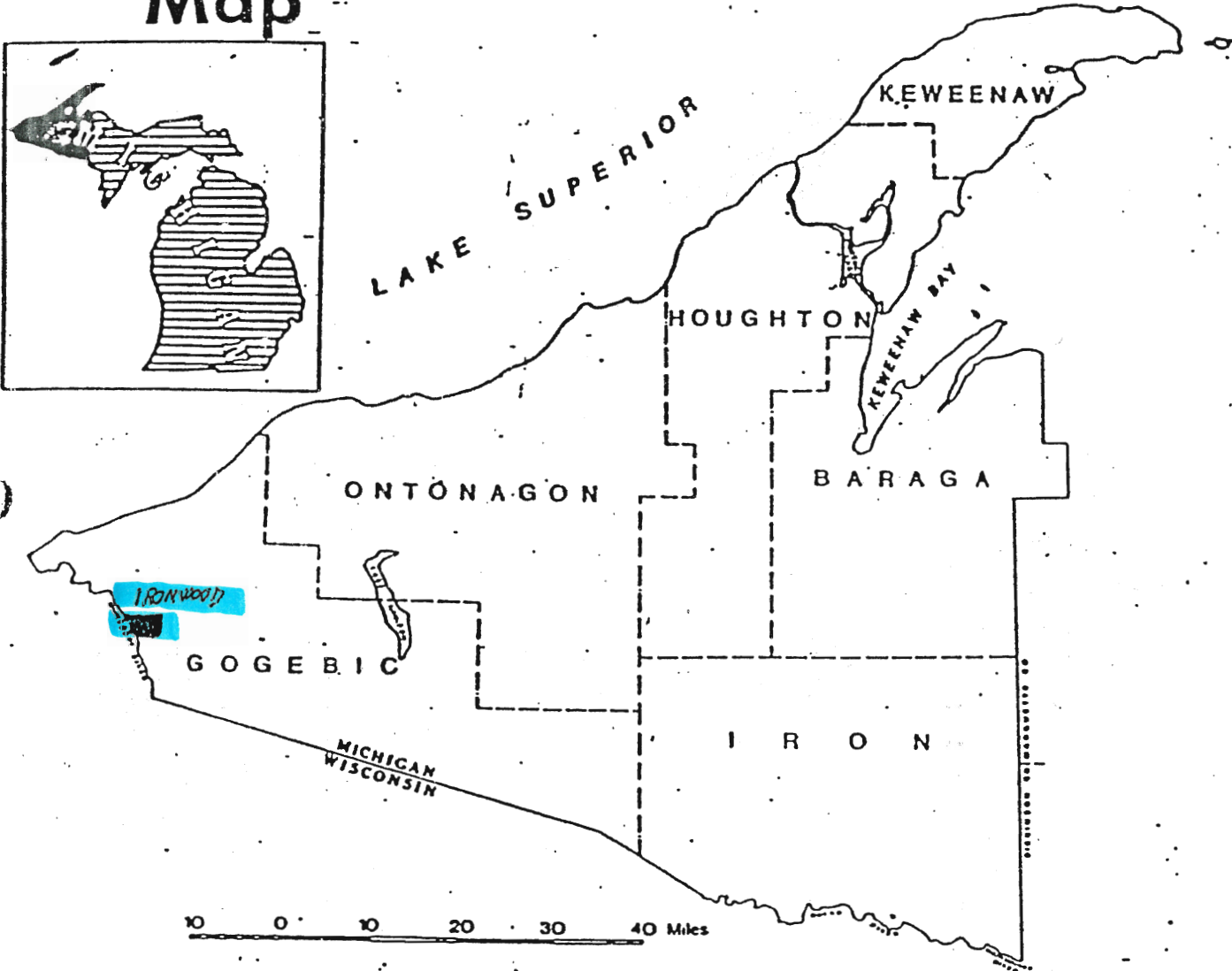


FIGURE A

APPENDIX A

SURVEY RESULTS

IRONWOOD RECREATION SURVEY

1. Do existing city parks meet the recreational needs of you and your family?

	TOTAL	CHILDREN AT HOME		AGE					LOCATION				
		YES	NO	18 AND UNDER	19 TO 34	35 TO 49	50 TO 64	65 AND OVER	AURORA/JESSIEV.	NORRIE/ASHLAND	DOWN-TOWN	NORTH OF US 2	NORTH-SIDE
TOTAL RESPONSES	182	84	97	38	19	48	33	43	25	30	24	35	55
Yes	43.4	35.7	50.5	21.1	47.4	47.9	48.5	53.5	36.0	36.7	45.8	40.0	50.9
No	28.6	35.7	22.7	42.1	31.6	27.1	30.3	16.3	44.0	30.0	29.2	31.4	16.4
Unsure	28.0	28.6	26.8	36.8	21.1	25.0	21.2	30.2	20.0	33.3	25.0	28.6	32.7

IRONWOOD RECREATION SURVEY

2. Which of the following cultural facilities do you or your family use at least once per year?

	CHILDREN AT HOME			AGE					LOCATION				
	TOTAL	YES	NO	18 AND UNDER	19 TO 34	35 TO 49	50 TO 64	65 AND OVER	AURORA/JESSIEV.	NORRIE/ASHLAND	DOWN-TOWN	NORTH OF US 2	NORTH-SIDE
TOTAL RESPONDING	196	91	104	40	18	54	35	48	24	33	27	36	62
Carnegie Library	83.7	89.0	78.8	82.5	94.4	90.7	91.4	66.7	87.5	66.7	85.2	88.9	91.9
Historic Ironwood Theatre	75.0	72.5	76.9	75.0	50.0	72.2	80.0	83.3	70.8	75.8	81.5	72.2	77.4
Memorial Building - American Legion Hall	43.9	33.0	53.8	35.0	27.8	38.9	45.7	60.4	33.3	57.6	48.1	50.0	40.3
Depot Museum	42.3	35.2	48.1	15.0	44.4	42.6	45.7	62.5	41.7	36.4	51.9	33.3	50.0
Memorial Building - Auditorium	38.3	28.6	47.1	22.5	11.1	42.6	40.0	54.2	33.3	36.4	40.7	36.1	43.5
Other	2.6	1.1	3.8	0.0	0.0	1.9	2.9	6.3	8.3	0.0	3.7	0.0	3.2

IRONWOOD RECREATION SURVEY

3. Which of the following parks or facilities do you or your family use at least once per year?

	CHILDREN AT HOME			AGE					LOCATION				
	TOTAL	YES	NO	18 AND UNDER	19 TO 34	35 TO 49	50 TO 64	65 AND OVER	AURORA/JESSIEV.	NORRIE/ASHLAND	DOWN-TOWN	NORTH OF US 2	NORTH-SIDE
TOTAL RESPONDING	190	91	98	40	20	51	33	45	22	32	27	36	59
Civic Center	72.6	84.6	61.2	85.0	60.0	76.5	66.7	66.7	68.2	68.8	77.8	72.2	76.3
Norrie Park	62.1	61.5	62.2	50.0	70.0	66.7	54.5	68.9	68.2	81.3	48.1	55.6	64.4
Longyear Park	49.5	61.5	38.8	70.0	70.0	45.1	39.4	35.6	22.7	31.3	44.4	63.9	67.8
Little League Field	29.5	39.6	19.4	35.0	35.0	35.3	24.2	17.8	31.8	28.1	25.9	25.0	35.6
Ridge Street Tennis Courts	28.4	38.5	19.4	35.0	20.0	35.3	36.4	13.3	13.6	28.1	22.2	27.8	40.7
Kuitunen Park	27.9	31.9	24.5	22.5	40.0	33.3	21.2	24.4	18.2	31.3	25.9	19.4	42.4
Hiawatha Complex	25.3	18.7	31.6	20.0	35.0	19.6	15.2	37.8	22.7	34.4	37.0	16.7	23.7
Colonial	23.2	31.9	15.3	27.5	15.0	27.5	27.3	15.6	22.7	34.4	7.4	11.1	30.5
Curry Park	22.6	23.1	22.4	37.5	15.0	11.8	24.2	22.2	18.2	21.9	22.2	30.6	20.3
Randa Softball Field	22.1	25.3	19.4	20.0	30.0	17.6	27.3	20.0	13.6	43.8	11.1	16.7	25.4
Little League Tennis Courts	15.3	23.1	8.2	35.0	10.0	19.6	6.1	2.2	13.6	21.9	14.8	16.7	11.9
Manny's Skating Rink	12.6	17.6	7.1	2.5	35.0	17.6	12.1	6.7	13.6	25.0	11.1	8.3	11.9

IRONWOOD RECREATION SURVEY

3. Which of the following parks or facilities do you or your family use at least once per year?

	CHILDREN AT HOME			AGE					LOCATION				
	TOTAL	YES	NO	18 AND UNDER	19 TO 34	35 TO 49	50 TO 64	65 AND OVER	AURORA/JESSIEV.	NORRIE/ASHLAND	DOWN-TOWN	NORTH OF US 2	NORTH-SIDE
TOTAL RESPONDING	190	91	98	40	20	51	33	45	22	32	27	36	59
Memorial Building Pool	8.9	14.3	4.1	20.0	5.0	7.8	6.1	4.4	9.1	12.5	14.8	8.3	5.1
Kiwanis Tot Lot	8.4	8.8	8.2	5.0	40.0	3.9	6.1	4.4	4.5	15.6	7.4	11.1	6.8
Memorial Building Gym	8.4	11.0	6.1	15.0	10.0	7.8	3.0	6.7	0.0	6.3	18.5	11.1	6.8
Lake/Ayer Street Playgrond	5.3	7.7	3.1	5.0	20.0	5.9	3.0	0.0	9.1	0.0	11.1	5.6	5.1
Rotary Tot Lot	3.2	6.6	0.0	2.5	10.0	5.9	0.0	0.0	0.0	6.3	0.0	0.0	6.8
Other	3.2	3.3	3.1	0.0	5.0	3.9	6.1	2.2	0.0	0.0	0.0	2.8	8.5

IRONWOOD RECREATION SURVEY

4. Select up to five of the following parks or facilities that you would like to see improved.

	CHILDREN AT HOME			AGE					LOCATION				
	TOTAL	YES	NO	18 AND UNDER	19 TO 34	35 TO 49	50 TO 64	65 AND OVER	AURORA/JESSIEV.	NORRIE/ASHLAND	DOWN-TOWN	NORTH OF US 2	NORTH-SIDE
TOTAL RESPONDING	174	85	88	38	18	50	29	39	20	29	25	35	55
Norrie Park	60.9	63.5	58.0	55.3	77.8	66.0	51.7	59.0	65.0	79.3	56.0	62.9	54.5
Longyear Park	37.9	37.6	38.6	44.7	44.4	34.0	37.9	33.3	10.0	20.7	32.0	45.7	56.4
Civic Center	28.7	29.4	27.3	34.2	16.7	20.0	44.8	28.2	35.0	6.9	32.0	28.6	34.5
Colonial	25.9	29.4	21.6	23.7	27.8	26.0	48.3	10.3	35.0	24.1	20.0	20.0	30.9
Memorial Building Pool	24.7	25.9	23.9	26.3	22.2	20.0	27.6	28.2	40.0	20.7	40.0	20.0	20.0
Hiawatha Complex	21.8	16.5	27.3	18.4	27.8	16.0	13.8	35.9	25.0	20.7	24.0	20.0	23.6
Randa Softball Field	21.3	21.2	21.6	28.9	16.7	18.0	27.6	15.4	10.0	31.0	8.0	22.9	29.1
Memorial Building Gym	20.7	22.4	19.3	23.7	27.8	14.0	20.7	23.1	35.0	10.3	32.0	17.1	20.0
Curry Park	16.1	15.3	17.0	23.7	5.6	12.0	13.8	20.5	15.0	6.9	8.0	22.9	14.5
Kuitunen Park	15.5	11.8	19.3	15.8	11.1	22.0	3.4	17.9	5.0	10.3	20.0	11.4	23.6
Lake/Ayer Street Playgrond	15.5	12.9	18.2	23.7	22.2	12.0	6.9	15.4	15.0	10.3	24.0	22.9	5.5
Manny's Skating Rink	14.9	15.3	13.6	13.2	22.2	12.0	20.7	12.8	5.0	37.9	8.0	8.6	12.7

IRONWOOD RECREATION SURVEY

4. Select up to five of the following parks or facilities that you would like to see improved.

	CHILDREN AT HOME			AGE					LOCATION				
	TOTAL	YES	NO	18 AND UNDER	19 TO 34	35 TO 49	50 TO 64	65 AND OVER	AURORA/JESSIEV.	NORRIE/ASHLAND	DOWN-TOWN	NORTH OF US 2	NORTH-SIDE
TOTAL RESPONDING	174	85	88	38	18	50	29	39	20	29	25	35	55
Little League Tennis Courts	12.1	16.5	8.0	23.7	5.6	10.0	17.2	2.6	15.0	10.3	4.0	11.4	12.7
Ridge Street Tennis Courts	12.1	14.1	10.2	13.2	5.6	12.0	17.2	10.3	20.0	13.8	4.0	5.7	12.7
Kiwanis Tot Lot	11.5	12.9	10.2	7.9	38.9	8.0	10.3	7.7	10.0	31.0	4.0	8.6	9.1
Little League Field	10.9	9.4	11.4	10.5	11.1	8.0	17.2	10.3	5.0	6.9	0.0	14.3	20.0
Rotary Tot Lot	2.9	3.5	2.3	2.6	0.0	4.0	3.4	2.6	0.0	3.4	0.0	5.7	1.8
Other	2.3	1.2	3.4	0.0	0.0	2.0	3.4	5.1	5.0	0.0	0.0	0.0	5.5

IRONWOOD RECREATION SURVEY

5. Which of the following five additional facilities would you like to see developed in city parks?

	TOTAL	CHILDREN AT HOME		AGE					LOCATION				
		YES	NO	18 AND UNDER	19 TO 34	35 TO 49	50 TO 64	65 AND OVER	AURORA/JESSIEV.	NORRIE/ASHLAND	DOWN-TOWN	NORTH OF US 2	NORTH-SIDE
TOTAL RESPONDING	171	80	90	39	19	46	31	36	23	30	23	34	52
Rest Room Facilities	51.5	47.5	54.4	46.2	57.9	39.1	51.6	69.4	39.1	53.3	52.2	38.2	61.5
Walking Paths	48.5	36.3	58.9	15.4	15.8	65.2	64.5	66.7	43.5	53.3	39.1	52.9	53.8
Bike Paths	40.9	46.3	36.7	46.2	31.6	45.7	38.7	36.1	43.5	33.3	30.4	61.8	36.5
Picnic Areas	36.3	23.8	47.8	15.4	26.3	32.6	41.9	63.9	43.5	43.3	34.8	23.5	38.5
Swimming (Outdoor)	36.3	42.5	31.1	64.1	42.1	32.6	25.8	16.7	39.1	26.7	43.5	38.2	28.8
Nature Area/Nature Trails	34.5	33.8	35.6	23.1	26.3	47.8	38.7	30.6	30.4	30.0	34.8	35.3	38.5
Basketball Courts	33.3	47.5	20.0	51.3	57.9	34.8	19.4	11.1	21.7	33.3	39.1	38.2	34.6
Sledding Hills	31.0	41.3	21.1	33.3	63.2	30.4	35.5	8.3	17.4	30.0	34.8	44.1	28.8
Camping Facilities	22.2	27.5	17.8	43.6	26.3	13.0	16.1	13.9	30.4	30.0	13.0	20.6	15.4
Fishing Access	22.2	26.2	18.9	20.5	36.8	13.0	35.5	16.7	26.1	33.3	26.1	17.6	19.2
Shooting/Archery Range	22.2	26.2	18.9	30.8	21.1	26.1	16.1	13.9	21.7	30.0	21.7	29.4	13.5
Playgrounds	15.8	13.8	16.7	10.3	15.8	8.7	16.1	30.6	17.4	16.7	13.0	14.7	15.4

IRONWOOD RECREATION SURVEY

5. Which of the following five additional facilities would you like to see developed in city parks?

	CHILDREN AT HOME			AGE					LOCATION				
	TOTAL	YES	NO	18 AND UNDER	19 TO 34	35 TO 49	50 TO 64	65 AND OVER	AURORA/JESSIEV.	NORRIE/ASHLAND	DOWN-TOWN	NORTH OF US 2	NORTH-SIDE
TOTAL RESPONDING	171	80	90	39	19	46	31	36	23	30	23	34	52
Tennis Courts	12.9	20.0	6.7	33.3	5.3	10.9	6.5	2.8	17.4	16.7	4.3	11.8	11.5
Skating Rink	10.5	12.5	8.9	5.1	10.5	15.2	16.1	5.6	17.4	10.0	8.7	5.9	11.5
Soccer Fields	5.8	10.0	2.2	12.8	10.5	4.3	0.0	2.8	0.0	0.0	13.0	8.8	5.8
Other	4.1	3.8	4.4	5.1	0.0	4.3	3.2	5.6	4.3	0.0	0.0	0.0	9.6

IRONWOOD RECREATION SURVEY

6. Would you support bike paths and walking trails that would connect parks, playgrounds, schools and residential areas?

	TOTAL	CHILDREN AT HOME		AGE					LOCATION				
		YES	NO	18 AND UNDER	19 TO 34	35 TO 49	50 TO 64	65 AND OVER	AURORA/ JESSIEV.	NORRIE/ ASHLAND	DOWN- TOWN	NORTH OF US 2	NORTH SIDE
TOTAL RESPONSES	196	93	102	41	20	55	35	44	26	33	28	37	62
Yes	80.1	90.3	70.6	90.2	100.0	83.6	71.4	63.6	88.5	84.8	82.1	83.8	69.4
Unsure	12.8	5.4	19.6	7.3	0.0	10.9	14.3	25.0	3.8	15.2	7.1	8.1	21.0
No	7.1	4.3	9.8	2.4	0.0	5.5	14.3	11.4	7.7	0.0	10.7	8.1	9.7

IRONWOOD RECREATION SURVEY

7. Would you be interested in an organized summer parks and recreation program for school-aged children?

	TOTAL	CHILDREN AT HOME		AGE					LOCATION				
		YES	NO	18 AND UNDER	19 TO 34	35 TO 49	50 TO 64	65 AND OVER	AURORA/JESSIEV.	NORRIE/ASHLAND	DOWN-TOWN	NORTH OF US 2	NORTH SIDE
TOTAL RESPONSES	194	90	103	41	20	52	36	44	27	33	28	37	58
Yes	66.5	75.6	58.3	73.2	80.0	65.4	58.3	61.4	66.7	66.7	64.3	78.4	58.6
Unsure	20.6	16.7	24.3	17.1	15.0	19.2	27.8	22.7	11.1	15.2	25.0	8.1	36.2
No	12.9	7.8	17.5	9.8	5.0	15.4	13.9	15.9	22.2	18.2	10.7	13.5	5.2

IRONWOOD RECREATION SURVEY

8. Would you or a member of your family use the Memorial Building swimming pool if it were re-opened?

	TOTAL	CHILDREN AT HOME		AGE					LOCATION				
		YES	NO	18 AND UNDER	19 TO 34	35 TO 49	50 TO 64	65 AND OVER	AURORA/JESSIEV.	NORRIE/ASHLAND	DOWN-TOWN	NORTH OF US 2	NORTH-SIDE
TOTAL RESPONSES	198	92	105	41	20	54	36	46	27	33	28	38	61
Yes	39.4	43.5	36.2	53.7	45.0	42.6	33.3	23.9	40.7	33.3	42.9	42.1	39.3
No	30.3	20.7	39.0	17.1	10.0	25.9	38.9	50.0	25.9	27.3	25.0	31.6	34.4
Unsure	30.3	35.9	24.8	29.3	45.0	31.5	27.8	26.1	33.3	39.4	32.1	26.3	26.2

IRONWOOD RECREATION SURVEY

9. Would you or a member of your family use the Memorial Building gymnasium if it were re-opened?

	TOTAL	CHILDREN AT HOME		AGE					LOCATION				
		YES	NO	18 AND UNDER	19 TO 34	35 TO 49	50 TO 64	65 AND OVER	AURORA/JESSIEV.	NORRIE/ASHLAND	DOWN-TOWN	NORTH OF US 2	NORTH SIDE
TOTAL RESPONSES	193	92	100	41	20	53	36	42	26	33	28	37	60
No	38.9	27.2	50.0	26.8	15.0	30.2	58.3	57.1	34.6	30.3	32.1	48.6	41.7
Unsure	31.6	38.0	25.0	26.8	30.0	41.5	25.0	31.0	23.1	45.5	25.0	24.3	36.7
Yes	29.5	34.8	25.0	46.3	55.0	28.3	16.7	11.9	42.3	24.2	42.9	27.0	21.7

IRONWOOD RECREATION SURVEY

11. Do you have school age children living with you?

	TOTAL	CHILDREN AT HOME		AGE					LOCATION				
		YES	NO	18 AND UNDER	19 TO 34	35 TO 49	50 TO 64	65 AND OVER	AURORA/JESSIEV.	NORRIE/ASHLAND	DOWN-TOWN	NORTH OF US 2	NORTH-SIDE
TOTAL RESPONSES	202	93	109	41	20	55	36	49	27	34	28	37	62
No	54.0	0.0	100.0	17.1	35.0	34.5	75.0	98.0	59.3	55.9	57.1	51.4	51.6
Yes	46.0	100.0	0.0	82.9	65.0	65.5	25.0	2.0	40.7	44.1	42.9	48.6	48.4

IRONWOOD RECREATION SURVEY

12. What is your age?

	CHILDREN AT HOME			AGE					LOCATION				
	TOTAL	YES	NO	18 AND UNDER	19 TO 34	35 TO 49	50 TO 64	65 AND OVER	AURORA/JESSIEV.	NORRIE/ASHLAND	DOWN-TOWN	NORTH OF US 2	NORTH-SIDE
TOTAL RESPONSES	202	93	108	41	20	55	37	49	27	33	28	38	62
35 to 49 Years	27.2	38.7	17.6	0.0	0.0	100.0	0.0	0.0	29.6	30.3	28.6	21.1	32.3
65 and Over	24.3	1.1	44.4	0.0	0.0	0.0	0.0	100.0	18.5	24.2	32.1	15.8	22.6
18 and Under	20.3	36.6	6.5	100.0	0.0	0.0	0.0	0.0	7.4	21.2	14.3	39.5	11.3
50 to 64 Years	18.3	9.7	25.0	0.0	0.0	0.0	100.0	0.0	29.6	12.1	10.7	15.8	25.8
19 to 34 Years	9.9	14.0	6.5	0.0	100.0	0.0	0.0	0.0	14.8	12.1	14.3	7.9	8.1

IRONWOOD RECREATION SURVEY

13. Does anyone in your household have a handicap that would require specialized recreation?

LOCATION	CHILDREN AT HOME					AGE					TOTAL	TOTAL RESPONSES		
	18 AND UNDER	19 TO 34	35 TO 49	50 TO 64	65 AND OVER	AURORA / NORRIE / DOWN-NORTH	NORTH OF US 2	ASHLAND TOWN	JESSIEV.	NORTH SIDE				
	40	20	55	36	40	27	32	28	37	61	192	TOTAL RESPONSES		
	97.5	90.0	98.2	94.4	87.5	88.9	90.6	89.3	97.3	98.4	93.8	No		
	4.0	5.1	0.0	5.0	7.5	7.4	3.1	3.6	2.7	1.6	3.1	Yes		
	2.2	1.1	0.0	1.8	5.0	3.7	6.3	7.1	0.0	0.0	3.1	Unsure		

IRONWOOD RECREATION SURVEY

14. In what neighborhood do you reside?

	TOTAL	CHILDREN AT HOME		AGE					LOCATION				
		YES	NO	18 AND UNDER	19 TO 34	35 TO 49	50 TO 64	65 AND OVER	AURORA/ JESSIEV.	NORRIE/ ASHLAND	DOWN- TOWN	NORTH OF US 2	NORTH- SIDE
TOTAL RESPONSES	189	86	102	35	20	54	37	42	27	34	28	38	62
Area 8 - Northside	32.8	34.9	31.4	20.0	25.0	37.0	43.2	33.3	0.0	0.0	0.0	0.0	100.0
Area 6 - North of U.S. 2	18.5	17.4	18.6	37.1	15.0	13.0	16.2	14.3	0.0	0.0	0.0	92.1	0.0
Area 3 - Norrie	16.4	15.1	17.6	17.1	20.0	16.7	10.8	16.7	0.0	91.2	0.0	0.0	0.0
Area 4 - Downtown Area	14.8	14.0	15.7	11.4	20.0	14.8	8.1	21.4	0.0	0.0	100.0	0.0	0.0
Area 2 - Jessieville	9.5	9.3	9.8	5.7	5.0	9.3	16.2	9.5	66.7	0.0	0.0	0.0	0.0
Area 1 - Aurora Location	4.8	3.5	5.9	0.0	15.0	5.6	5.4	2.4	33.3	0.0	0.0	0.0	0.0
Area 7 - Reno Locat. (mall area)	1.6	3.5	0.0	5.7	0.0	1.9	0.0	0.0	0.0	0.0	0.0	7.9	0.0
Area 5 - Ashland Location	1.6	2.3	1.0	2.9	0.0	1.9	0.0	2.4	0.0	8.8	0.0	0.0	0.0

**MEETING MINUTES, PUBLIC HEARING NOTICE
AND RESOLUTION OF ADOPTION**

APPENDIX B

to make the building easier to sell. He has had interest from an antique shop, adult foster care and a Christian book store. (It was noted that the above uses all fit within the C-1 Neighborhood Commercial.)

Motion by Wyssling, supported by Bergquist. CARRIED. To recommend to the Ironwood City Commission to approve the proposed re-zoning of land by the Lighthouse Ministries for Lots 13 through 16, Block 4, Mansfield, Case and Longyear's Addition and the South 100 feet of Lot 93 (except the East 12 feet thereof), Assessor's Plat No. 3 (600 E. Ayer Street), from R-1 Residential to C-1 Neighborhood Commercial.

7. Adjourn Public Hearing.

Chairman Lindquist adjourned the Public Hearing at 5:53 P.M.

1. Call Regular Meeting to Order.

Chairman Lindquist called the Regular meeting to order at 5:55 P.M.

2. Recording of the Roll.

Same as noted above.

3. Consider approval of the May 2, 2001 Public Hearing/ Regular meeting minutes and Public Hearing Minutes of May 16, 2001.

Being no corrections, additions or deletions motion by Wyssling, supported by Beckman. CARRIED. To approve the above noted minutes as presented.

4. Approval of the Docket.

Motion by Beckman, supported by Colasacco and Bergquist. CARRIED. To approve the Docket as presented.

5. Citizens wishing to address the Commission on Agenda Items.

There were no citizens present.

OLD BUSINESS

6. Surplus Property Update.

Will Andresen noted that the Planning Commission has this item as a yearly project on their goals and objectives every January. He indicated that Intern Gib Turner will be updating the surplus property list. He will merge the two lists into one. The surplus property list will also be cross referenced with a map. There is a possibility that the original prices quoted on the surplus property list may change. Mr. Turner presented a new spreadsheet on the surplus property and asked for any suggestions for improvement. The surplus property list when completed will be brought back to the Planning Commission for final approval.

NEW BUSINESS

7. Recreation Plan/Grants Update.

Will Andresen stated that six years ago a five year recreation plan was established. Because the five year plan has expired, the City is not eligible for grants. Mr. Andresen would like to update the plan to make it current. It will come back to the Planning Commission for final recommendation. He noted that not much has changed over the last five years.

8. Citizens wishing to address the Commission on items not on the Agenda.

IRONWOOD PLANNING COMMISSION

July 11, 2001

Ironwood, Michigan

Regular meeting of the Ironwood Planning Commission was held on the above date, beginning at 5:30 P.M., Community Development Conference Room, 2nd Floor, Municipal Memorial Building, Ironwood, Michigan.

1. Call to Order.

Chairman Lindquist called the regular meeting to order at 5:30 P.M.

2. Recording of the Roll.

PRESENT: Beckman, Colasacco, Green, Lindquist, Bergquist, Geib, Hakamaki.

EXCUSED: Oliver.

ABSENT: Wyssling.

OTHERS

PRESENT: Community Development Director Will Andresen, Intern Gib Turner.

3. Consider approval of the June 6, 2001 Public Hearing/Regular meeting minutes.

Being no corrections, additions or deletions motion by Colasacco, supported by Beckman.

CARRIED. To approve the above noted minutes as presented.

4. Approval of the Docket.

Motion by Beckman, supported by Hakamaki. CARRIED. To approve the Docket as presented.

5. Citizens wishing to address the Commission on Agenda Items.

There were no citizens present.

OLD BUSINESS

6. Recreation Plan/Grant Update.

Will Andresen presented a draft copy of the updated Recreation Plan. He stated that the plan is required before receiving any state or federal recreation grants. The plan focuses on the recreational trail and improvements to Norrie Park and Longyear Park. Discussion followed regarding the swimming beach at Norrie Park. Dave Hakamaki to investigate water quality issues in the Montreal River. The Planning Commission recommended that the Recreation, Cultural and Life Enrichment Committee be involved, if possible. Andresen will contact JoAnn Fleming, Chair of said committee, to determine their interest. The plan will be brought back to the Planning Commission at their next meeting.

NEW BUSINESS

7. Citizens wishing to address the Commission on items not on the Agenda.

No citizens were present.

8. Other Business.

Chairman Lindquist thanked Planning Commissioner Dave Hakamaki for his eight years of service and wished him luck in the future.

Motion by Beckman, supported by Green. CARRIED. To accept with regret Dave Hakamaki's resignation.

service.
Ironwood — Angela Gheller,
BS, English-secondary education;

Parks plan advances

By MARGARET LEVRA
Globe Staff Writer

Progress is being made on parks within the city of Ironwood. Through the efforts of the city's recreation, cultural and life enrichment committee, at its monthly meetings over the past two years, plans and projects have been developed for the various parks throughout the city.

Based on a survey of city residents, maintenance of and improvements to existing parks is in the forefront.

With Joann Fleming as chairperson, the park near Manny's field, across from Hiawatha has been closed. City crews are currently removing the playground equipment. The equipment is being brought to the Department of Public Works garage for cleaning, repairs and painting and will then be distributed to various parks around the city, including a new mini-park by the Hiawatha statue, Fleming said.

Other projects in the works for this summer include: purchase of two new drinking fountains to be placed at the Little League Field and Kutenan Park; purchase of four new benches for Kutenan Park; new tube-steel teeter-totters for all city parks; new lighting at Curry Park; port-a-pottys to be placed at Longyear Park; demolition of the bath house at Norrie Park; and design plans for improvements at the Lake and Ayer Street park.

The site at the corner of Ayer and Lake streets is being developed for possible designation as a teen-age park. The city commission, on Monday, authorized the recreation, cultural and life enrichment committee to investigate that possibility, with results sent to the commission for possible action.

Many of the park improvements are necessary due to the heavy amount of vandalism and misuse experienced, according to community development director A. Madson. He asks to

and Jessica Spolarich, associate in science, child care services.

advances

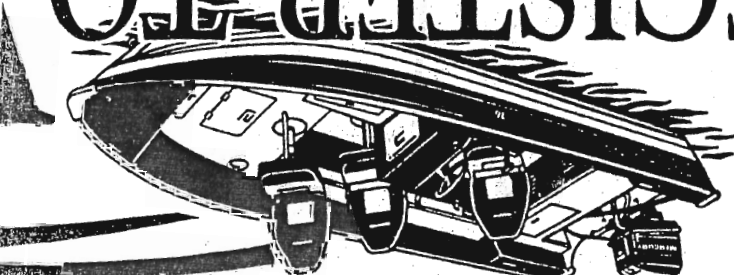
safety department immediately

at 932-1234."

Public comments are always welcome, Fleming said. Please contact either Fleming at 932-0203 or Andresen at 932-5050.

The owner told troopers from the Michigan State Police-Wakefield Post the car was stolen while she was at work, and when she went to go home, it was gone. The keys had been left in the vehicle. The theft has been reported through the national crime network.

HOT LIPS
Racing
at 7:30



REGISTER TO

The Northwoods Boat of Your Dreams and Everything

Here are EXTRA special chances to

MONDAYS

NEW!!!

Players Club

Double

Points

6 p.m. to closing!!!!

TUESDAYS

NEW!!!

Four-Deck

Tuesdays

Four-deck shoe games.

NEW!!!

Players Club

Double Points

6 p.m. to closing!!!!

WEDNESDAYS

NEW!!!

Blackjack*

Wednesdays

\$100

Prizes

For 6, 7 and 8 of same suit and three 7s of same suit. Any three 7s wins \$25. Must bear dealer's hand.

BAD RIVER Lodge Casino

Owned and operated by the
Bad River Band of Lake
Superior Chippewa

10 miles east of Ashland on Hwy.

See guest
P

M
V
J
H

Proceedings of the Ironwood City Commission

A Special Meeting of the Ironwood City Commission was held on Friday, February 28, 2003 at 11:00 A.M. in the Commission Chambers, second floor of the Municipal Memorial Building, 213 S. Marquette Street, Ironwood, Michigan. The purpose of the meeting to adopt a resolution to approve the five (5) year Recreation Plan for the City of Ironwood (2001-2006).

1. Mayor Zak called the Special Meeting Called to Order at 11:00 A.M.

Recording of the Roll.

PRESENT: Commissioner Haukkala, Koivisto, and Mayor Zak.
ABSENT: Commissioner Lorenson (Excused)

2. Consider Resolution approving the five (5) year Recreation Plan for the City of Ironwood (2001-2006).

City Manager Keith A. Johnson informed the City Commission the City Commission must approve the Recreation Plan by March 1, 2003, in order to submit the Norrie Park Grant.

Commissioner Peterson noted there was not a provision for the Pat O'Donnell Civic Center. Community Development Director Patrick Merrill did not see a problem with amending the plan in the future to include the Pat O'Donnell Civic Center. The City Commission agreed.

Motion was made by Peterson, supported by Koivisto to adopt a Resolution approving the five (5) year Recreation Plan for the City of Ironwood (2001-2006). Unanimously passed by roll call vote.

3. Adjournment.

Motion was made by Peterson, supported by Koivisto and carried to adjourn the meeting at 11:02 P.M.

Anita E. Zak, Mayor

Karen M. Gullian, City Clerk

CITY OF IRONWOOD



Telephone: (906) 932-5050
FAX: (906) 932-5745

213 S. Marquette Street
Ironwood, Michigan 49938

SPECIAL MEETING NOTICE

A Special Meeting of the Ironwood City Commission will be held on Friday, February 28, 2003 at 11:00 A.M. in the Commission Chambers, 213 S. Marquette Street, Ironwood, Michigan.
The purpose of the meeting to adopt a resolution to approve the five (5) year Recreation Plan for the City of Ironwood (2001-2006).

Keith A. Johnson
City Manager

1. Special Meeting Called to Order.
- Recording of the Roll.

2. Consider Resolution approving the five (5) year Recreation Plan for the City of Ironwood (2001-2006).
3. Adjournment.

This meeting announcement was broadcast at 12:15p, & 12:30p on 2/27 and again at 7a & 7:30a 8a & 8:30a, on 2/28, on both WUPM-FM & WHTX-AM

[Handwritten Signature]
CHUCK HERVASIO
News Dir.