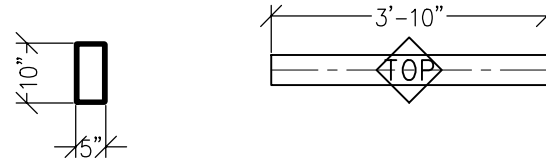


APPROVED FOR FABRICATION



WEST END TO FRAMING
CONN. DETAIL 15/S-401

HSS10x5x $\frac{5}{16}$
BEAM SB14
SCALE: 3/8"=1'-0"
FABRICATE (1)

EAST END TO COL. S5
CONN. DETAIL 94/ST704

MARK ON BEAM

STEEL - U.N.O.

TYPE OF MEMBER	ASTM SPEC.	F _y
WIDE FLANGE SHAPES	A992	50 KSI
ALL OTHER SHAPES	A36	36 KSI
PLATE	A36 OR A572	36 KSI (MIN)
PIPE SECTIONS	A500 (GRADE B)	42 KSI
STRUCTURAL TUBING (SQ. OR RECT.)	A500 (GRADE B)	46 KSI
CONN. BOLTS	A307	36 KSI
HEADED SHEAR STUDS	A108	49 KSI
THREADED RODS	A36	36 KSI

SHEET 1 OF 1

Paradise Ventures, Inc.

P.O. Box 2441
Wenatchee, WA 98807
509.670.9375 - FAX 881.2720

SHOP DRAWINGS
WENATCHEE QUALITY WELDING
MOSES LAKE CMC CENTER
DWG: MOSES LAKE CIVIC CENTER.DWG

STRUTS

DRAWN BY: COOKIE
CHECKED BY:

DATE: 01-08-2011

SB14