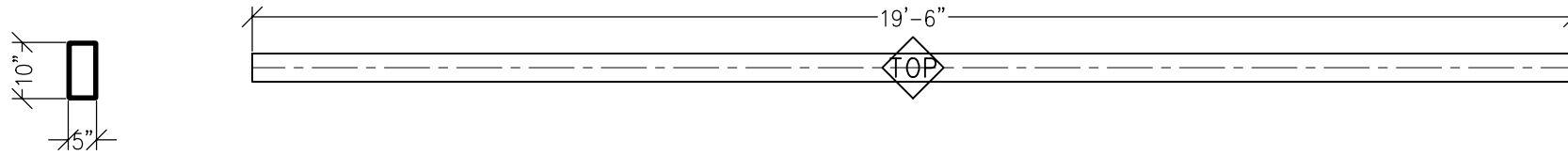


**APPROVED FOR FABRICATION**



WEST END TO COL. S5  
CONN. DETAIL 94/ST704

HSS10x5x $\frac{5}{16}$

EAST END TO COL. S12  
CONN. DETAIL 94/ST704

**BEAM SB15**

SCALE: 3/8"=1'-0"

FABRICATE (1)

 MARK ON BEAM

STEEL - U.N.O.

| TYPE OF MEMBER                   | ASTM SPEC.     | <u>F<sub>y</sub></u> |
|----------------------------------|----------------|----------------------|
| WIDE FLANGE SHAPES               | A992           | 50 KSI               |
| ALL OTHER SHAPES                 | A36            | 36 KSI               |
| PLATE                            | A36 OR A572    | 36 KSI (MIN)         |
| PIPE SECTIONS                    | A500 (GRADE B) | 42 KSI               |
| STRUCTURAL TUBING (SQ. OR RECT.) | A500 (GRADE B) | 46 KSI               |
| CONN. BOLTS                      | A307           | 36 KSI               |
| HEADED SHEAR STUDS               | A108           | 49 KSI               |
| THREADED RODS                    | A36            | 36 KSI               |

SHEET 1 OF 1

**STRUTS**

DRAWN BY: COOKE  
CHECKED BY:

DATE: 01-08-2011

SHOP DRAWINGS  
**WENATCHEE QUALITY WELDING**  
MOSES LAKE CMC CENTER  
DWG: MOSES LAKE CIVIC CENTER.DWG

**Paradise Ventures, Inc.**

P.O. Box 2441  
Wenatchee, WA 98807  
509.670.9375 - FAX 881.2720

**SB15**