

17'-11"
OVERALL BOT. OF BASE PL
TO Ø OF TOP OF CAP PL

NORTH SIDE

HSS5"x5"x5/16" FABRICATE (1)

93/ST704

COLUMN S8

SCALE: 1/2"=1'-0"

M MARK ON COLUMN

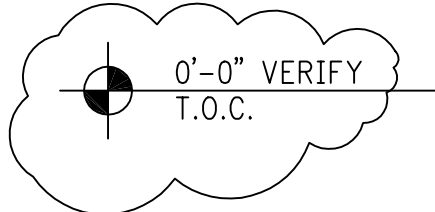
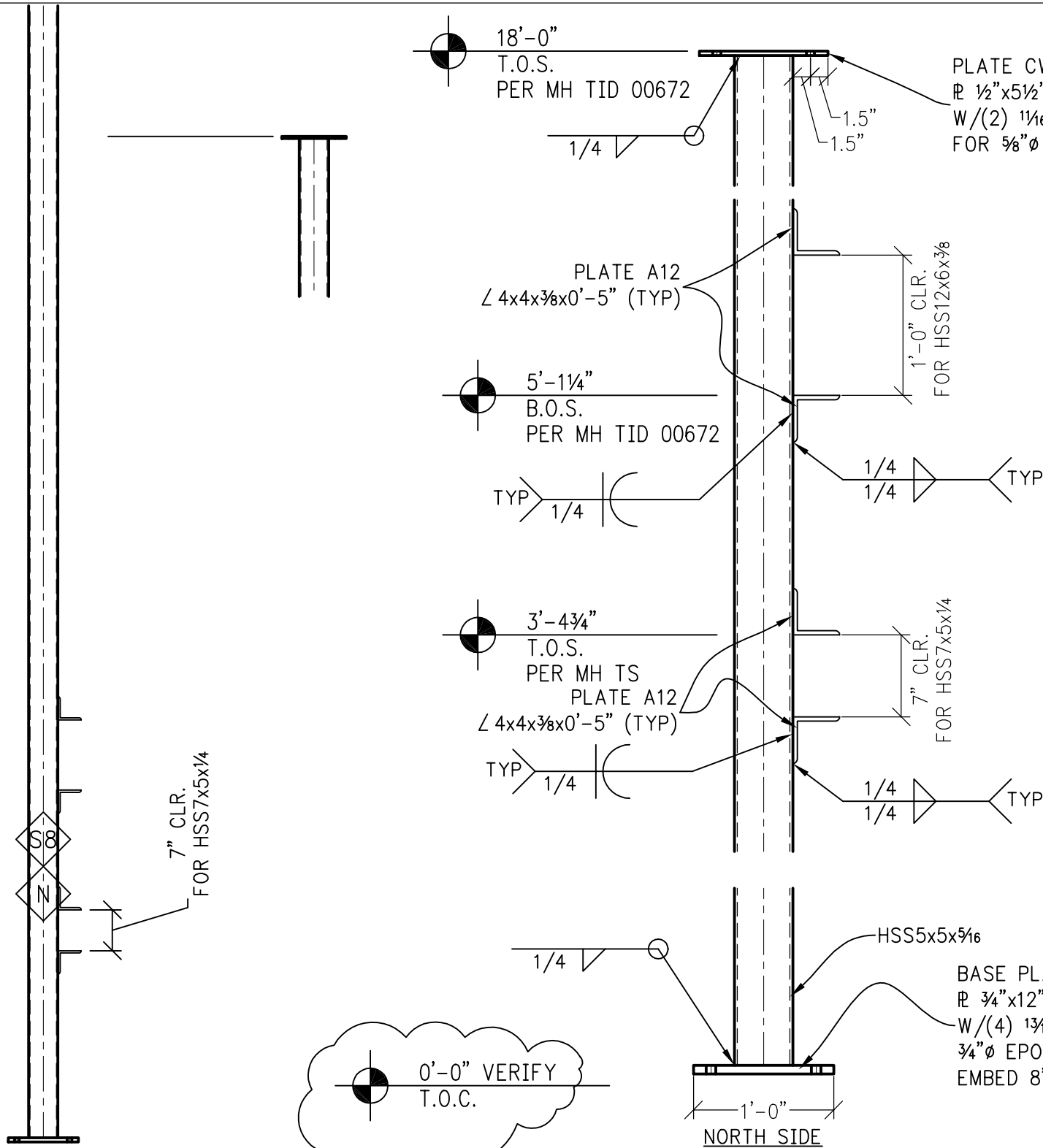


PLATE CW3
P 1/2"x5 1/2"x0'-11"
W/(2) 1 1/16" Ø HOLES
FOR 5/8" Ø A-307 BOLTS

PLATE A12
L 4x4x3/8x0'-5" (TYP)

5'-1 1/4"
B.O.S.
PER MH TID 00672

3'-4 3/4"
T.O.S.
PER MH TS
PLATE A12
L 4x4x3/8x0'-5" (TYP)

HSS5x5x5/16
BASE PLATE CB6A
P 3/4"x12"x0'-7"
W/(4) 1 3/16" Ø HOLES FOR
3/4" Ø EPOXY ANCHORS
EMBED 8"

NORTH SIDE

APPROVED FOR FABRICATION

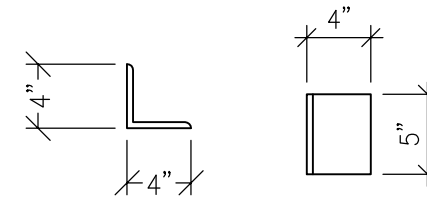
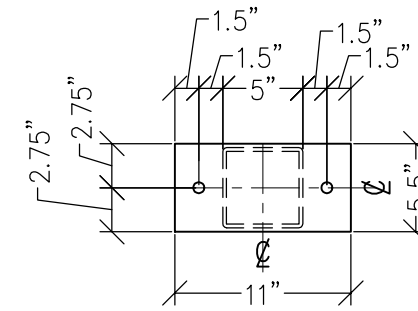
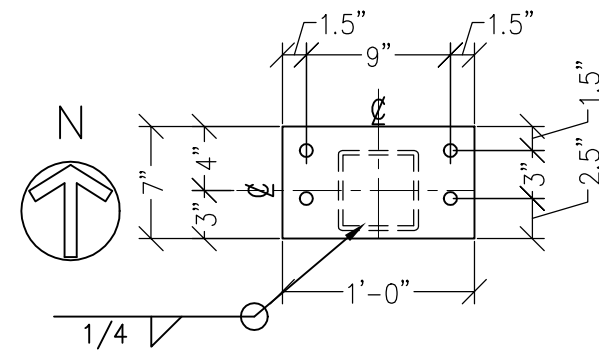


PLATE A12
L 4x4x3/8x0'-5"



STEEL - U.N.O.

TYPE OF MEMBER	ASTM SPEC.	F _y
WIDE FLANGE SHAPES	A992	50 KSI
ALL OTHER SHAPES	A36	36 KSI
PLATE	A36 OR A572	36 KSI (MIN)
PIPE SECTIONS	A500 (GRADE B)	42 KSI
STRUCTURAL TUBING (SQ. OR RECT.)	A500 (GRADE B)	46 KSI
CONN. BOLTS	A307	36 KSI
HEADED SHEAR STUDS	A108	49 KSI
THREADED RODS	A36	36 KSI

COLUMN

SHOP DRAWINGS
WENATCHEE QUALITY WELDING
MOSES LAKE CIVIC CENTER

Paradise Ventures, Inc.

P.O. Box 2441
Wenatchee, WA 98807
509.670.9375 - FAX 881.2720

S8

DRAWN BY: COOKIE
CHECKED BY:

DATE: 01-03-2011

DWG: MOSES LAKE CIVIC CENTER.DWG