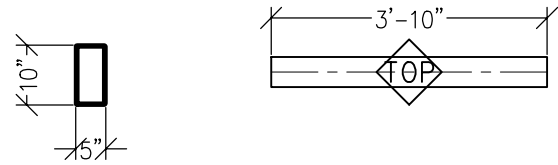


**APPROVED FOR FABRICATION**

1 02/02/2011



WEST END TO FRAMING  
CONN. DETAIL 15/S-401

HSS10x5x1/4 OR  
HSS10x5x5/16

**BEAM SB14**

SCALE: 3/8"=1'-0"

FABRICATE (1)

EAST END TO COL. S5  
CONN. DETAIL 94/ST704

MARK ON BEAM

STEEL - U.N.O.

TYPE OF MEMBER	ASTM SPEC.	F <sub>y</sub>
WIDE FLANGE SHAPES	A992	50 KSI
ALL OTHER SHAPES	A36	36 KSI
PLATE	A36 OR A572	36 KSI (MIN)
PIPE SECTIONS	A500 (GRADE B)	42 KSI
STRUCTURAL TUBING (SQ. OR RECT.)	A500 (GRADE B)	46 KSI
CONN. BOLTS	A307	36 KSI
HEADED SHEAR STUDS	A108	49 KSI
THREADED RODS	A36	36 KSI

SHEET 1 OF 1

**STRUTS**

DRAWN BY: COOKE  
CHECKED BY:

DATE: 01-08-2011

SHOP DRAWINGS  
**WENATCHEE QUALITY WELDING**  
MOSES LAKE CMC CENTER  
DWG: MOSES LAKE CIVIC CENTER.DWG

**Paradise Ventures, Inc.**

P.O. Box 2441  
Wenatchee, WA 98807  
509.670.9375 - FAX 881.2720

**SB14**