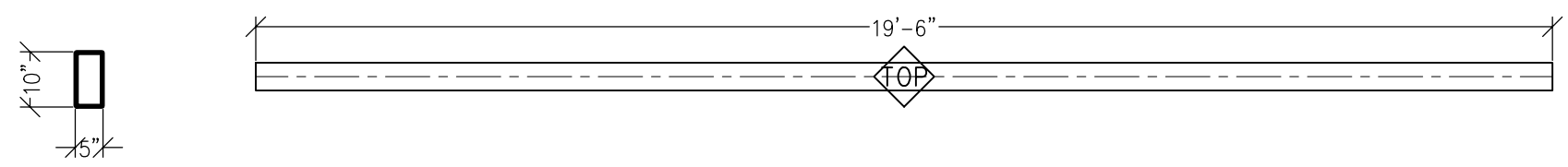


**APPROVED FOR FABRICATION**

1 02/02/2011

SHEET 1 OF 1



WEST END TO COL. S5  
CONN. DETAIL 94/ST704

HSS10x5x $\frac{3}{8}$  OR  
HSS10x5x $\frac{5}{16}$

EAST END TO COL. S12  
CONN. DETAIL 94/ST704

**BEAM SB15**  
SCALE: 3/8"=1'-0"

FABRICATE (1)

MARK ON BEAM

STEEL - U.N.O.

TYPE OF MEMBER	ASTM SPEC.	F <sub>y</sub>
WIDE FLANGE SHAPES	A992	50 KSI
ALL OTHER SHAPES	A36	36 KSI
PLATE	A36 OR A572	36 KSI (MIN)
PIPE SECTIONS	A500 (GRADE B)	42 KSI
STRUCTURAL TUBING (SQ. OR RECT.)	A500 (GRADE B)	46 KSI
CONN. BOLTS	A307	36 KSI
HEADED SHEAR STUDS	A108	49 KSI
THREADED RODS	A36	36 KSI

Paradise Ventures, Inc.

P.O. Box 2441  
Wenatchee, WA 98807  
509.670.9375 - FAX 881.2720

SHOP DRAWINGS  
WENATCHEE QUALITY WELDING  
MOSES LAKE CMC CENTER  
DWG: MOSES LAKE CIVIC CENTER.DWG

STRUTS

DRAWN BY: COOKE  
CHECKED BY:

DATE: 01-08-2011

**SB15**