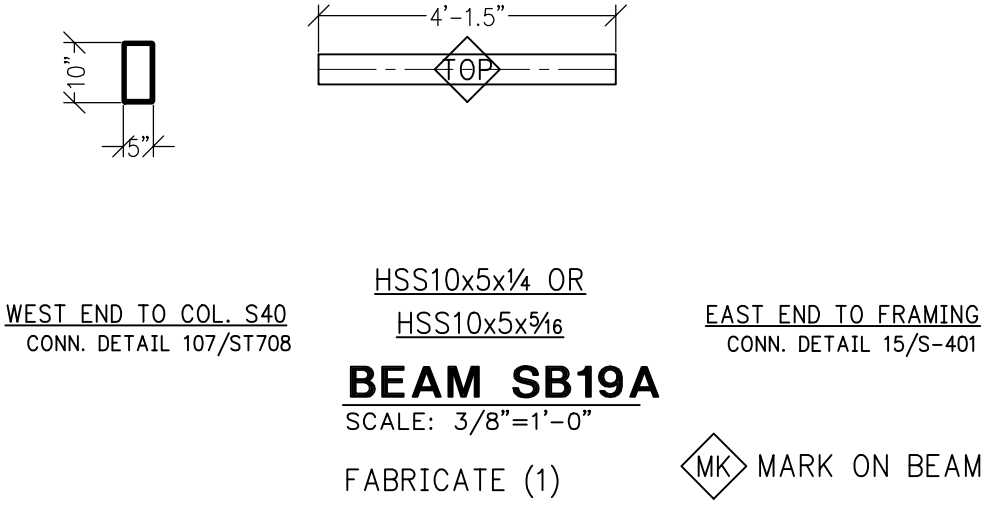


APPROVED FOR FABRICATION

1 02/02/2011

SHEET 1 OF 1



HSS10x5x $\frac{1}{4}$ OR
HSS10x5x $\frac{5}{16}$
BEAM SB19A
SCALE: 3/8"=1'-0"
FABRICATE (1)

◇ MK MARK ON BEAM

STEEL - U.N.O.

| TYPE OF MEMBER | ASTM SPEC. | F _y |
|----------------------------------|----------------|----------------|
| WIDE FLANGE SHAPES | A992 | 50 KSI |
| ALL OTHER SHAPES | A36 | 36 KSI |
| PLATE | A36 OR A572 | 36 KSI (MIN) |
| PIPE SECTIONS | A500 (GRADE B) | 42 KSI |
| STRUCTURAL TUBING (SQ. OR RECT.) | A500 (GRADE B) | 46 KSI |
| CONN. BOLTS | A307 | 36 KSI |
| HEADED SHEAR STUDS | A108 | 49 KSI |
| THREADED RODS | A36 | 36 KSI |

Paradise Ventures, Inc.
P.O. Box 2441
Wenatchee, WA 98807
509.670.9375 - FAX 881.2720

SHOP DRAWINGS
WENATCHEE QUALITY WELDING
MOSES LAKE CMC CENTER
DWG: MOSES LAKE CIVIC CENTER.DWG

STRUTS

DRAWN BY: COOKIE
CHECKED BY:

DATE: 01-08-2011

SB19A