

WHITE FLAG PROJECTS

*Karthik Pandian*

March 12 - April 23, 2011

WHITE FLAG PROJECTS

*Karthik Pandian: Elements of Style*

WHITE FLAG PROJECTS

4568 Manchester Avenue

Saint Louis, Missouri 63110

[www.whiteflagprojects.org](http://www.whiteflagprojects.org)

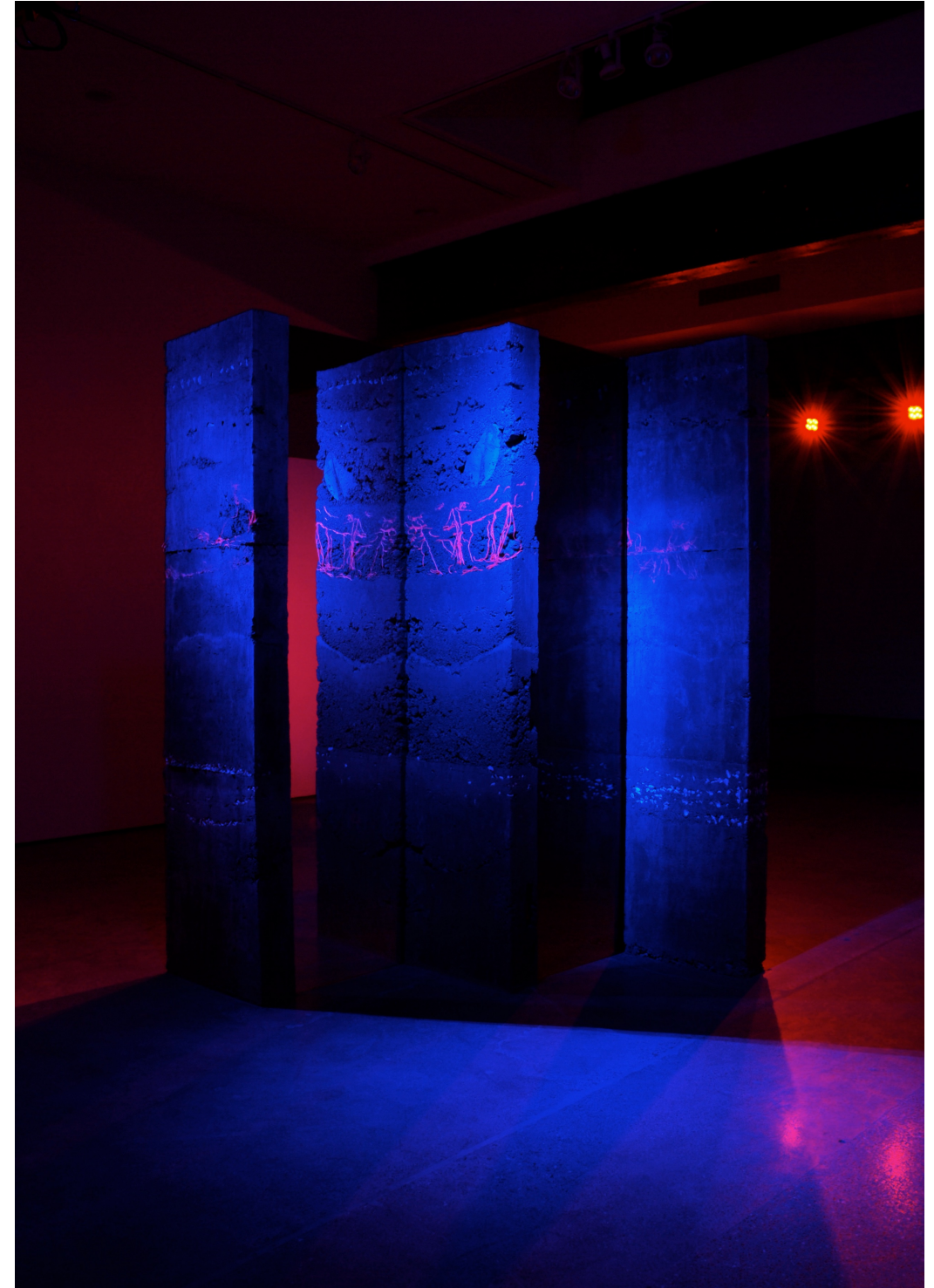


WHITE FLAG PROJECTS

*Karthik Pandian:  
Elements of Style*

This exhibition's primary element is a site-specific rammed earth and glass sculpture, "*Cahokia Byobu (Broken Screen)*," which drew on the artist's two-year investigation of the Cahokia Mounds State Historic Site.

publication



Detail of *Cahokia Byobu (Broken Screen) with Sound and Light Show*, 2011

Mirror pane glass, rammed earth with cement, shells, mason's line, 16mm film strips, glass shards, with two channel, three phase light sequence, 8 minutes, looped, and digital audio file transferred from Before the Sun 12 inch vinyl LP, 32 minutes, looped





*Cahokia Byobu (Broken Screen)*, 2011

Mirror pane glass, rammed earth with cement, shells, mason's line, 16mm film strips, glass shards

Dimensions variable; as installed, rammed earth wall sections 24 x 96 x 6 inches each, mirror pane glass sections 24 x 96 x .25 inches each, 294 x 96 x 36 inches overall

All artwork courtesy the artist and Richard Telles Fine Art, Los Angeles.







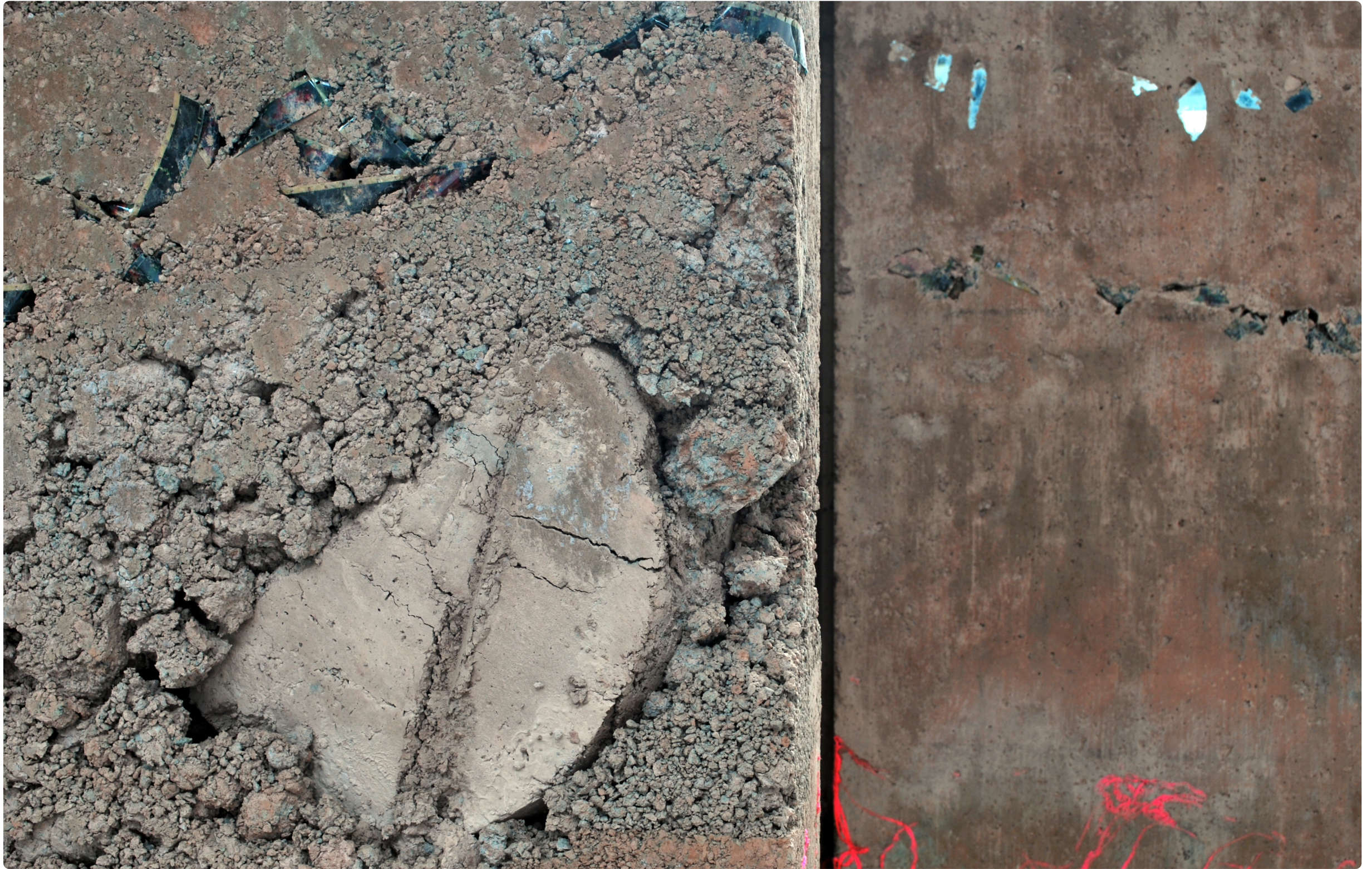
Detail of *Cahokia Byobu (Broken Screen)*, 2011  
Mirror pane glass, rammed earth with cement, shells, mason's line, 16mm film strips, glass shards





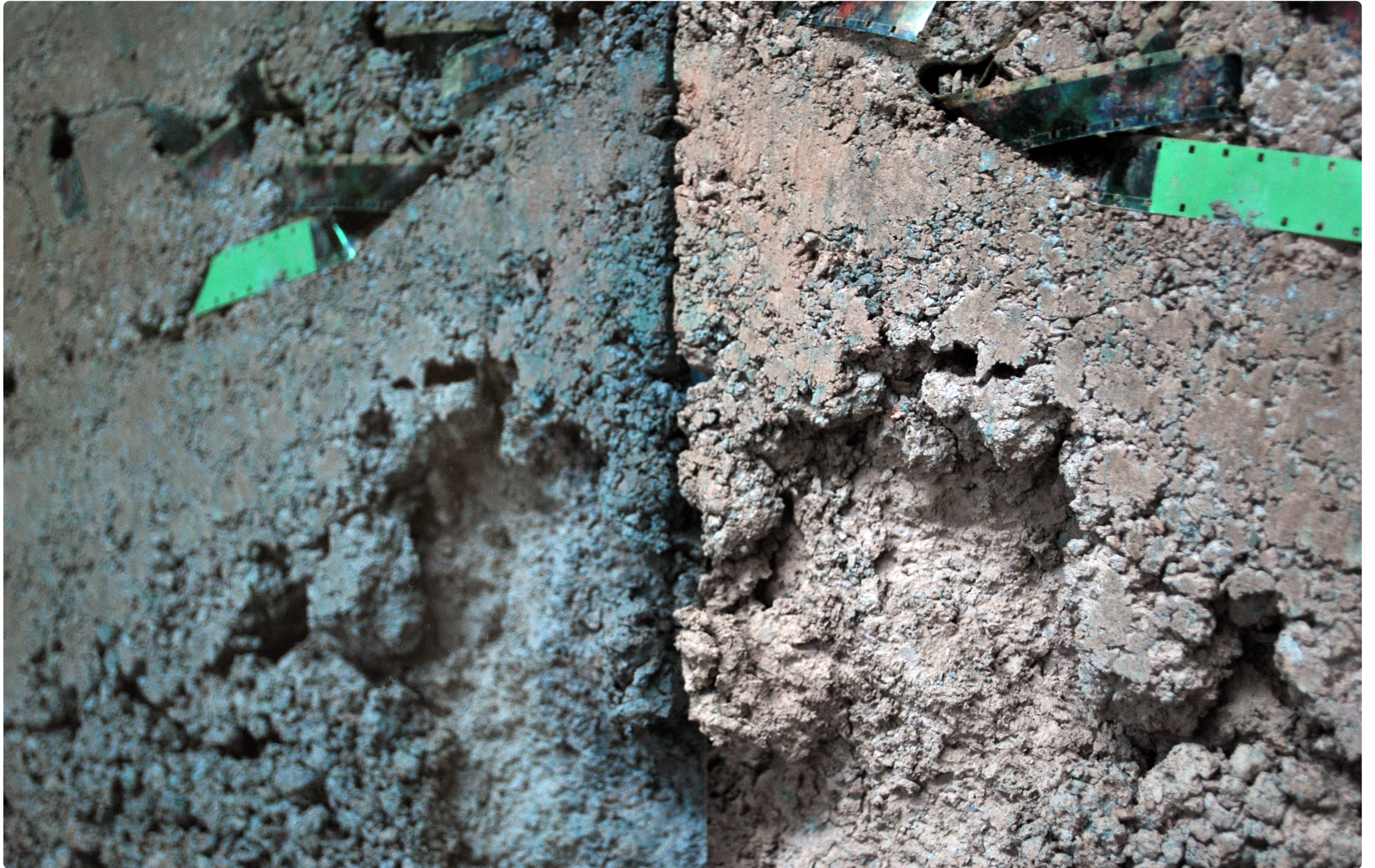
Detail of *Cahokia Byobu (Broken Screen)*, 2011  
Mirror pane glass, rammed earth with cement, shells, mason's line, 16mm film strips, glass shards





Detail of *Cahokia Byobu (Broken Screen)*, 2011  
Mirror pane glass, rammed earth with cement, shells, mason's line, 16mm film strips, glass shards





Detail of *Cahokia Byobu (Broken Screen)*, 2011  
Mirror pane glass, rammed earth with cement, shells, mason's line, 16mm film strips, glass shards





*Cahokia Byobu (Broken Screen)*, 2011

Mirror pane glass, rammed earth with cement, shells, mason's line, 16mm film strips, glass shards

Dimensions variable; as installed, rammed earth wall sections 24 x 96 x 6 inches each, mirror pane glass sections 24 x 96 x .25 inches each, 294 x 96 x 36 inches overall

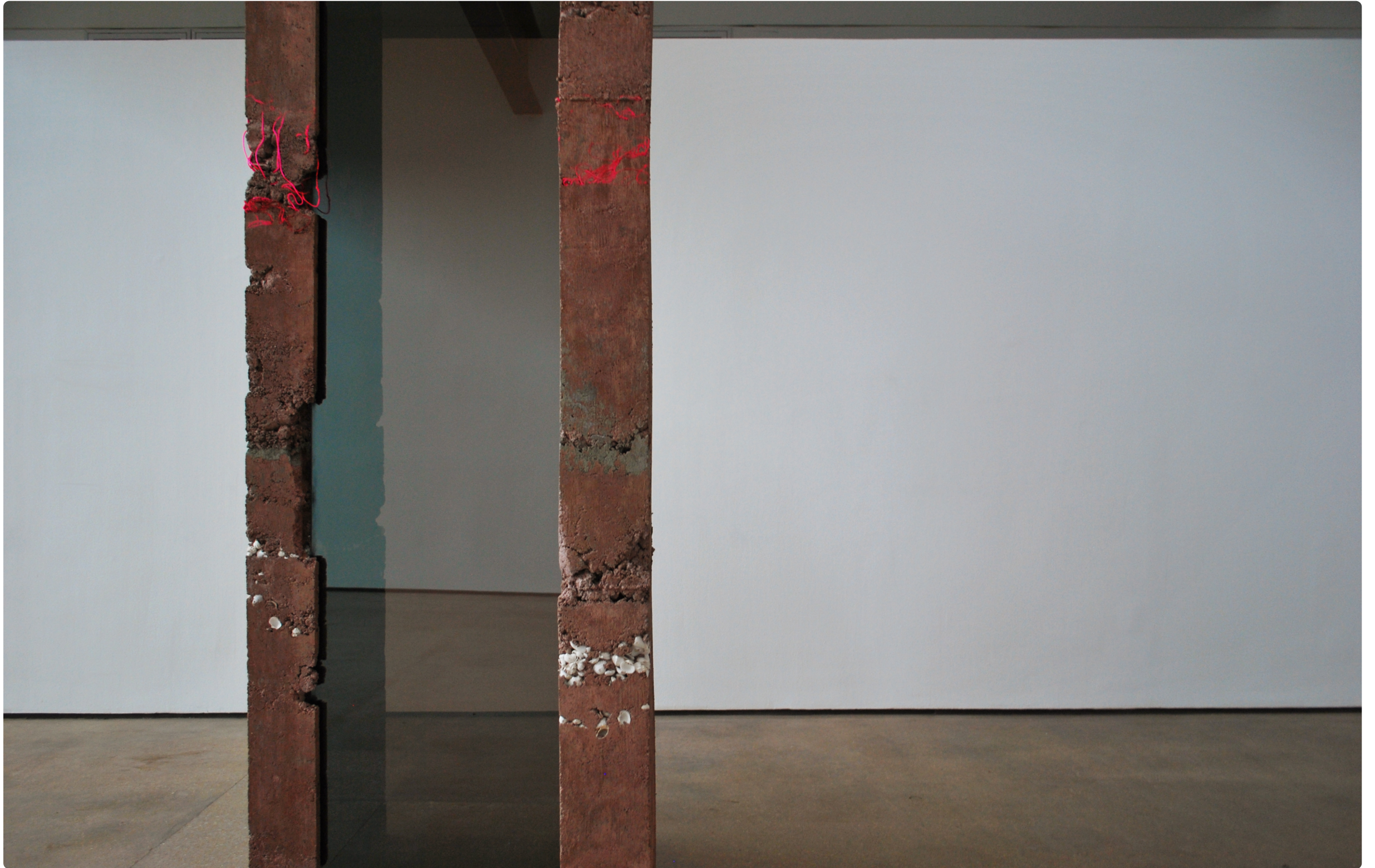






Detail of *Cahokia Byobu (Broken Screen)*, 2011  
Mirror pane glass, rammed earth with cement, shells, mason's line, 16mm film strips, glass shards





Detail of *Cahokia Byobu (Broken Screen)*, 2011  
Mirror pane glass, rammed earth with cement, shells, mason's line, 16mm film strips, glass shards





Detail of *Cahokia Byobu (Broken Screen)*, 2011  
Mirror pane glass, rammed earth with cement, shells, mason's line, 16mm film strips, glass shards





Detail of *Cahokia Byobu (Broken Screen)*, 2011  
Mirror pane glass, rammed earth with cement, shells, mason's line, 16mm film strips, glass shards





*Cahokia Byobu (Broken Screen)*, 2011

Mirror pane glass, rammed earth with cement, shells, mason's line, 16mm film strips, glass shards

Dimensions variable; as installed, rammed earth wall sections 24 x 96 x 6 inches each, mirror pane glass sections 24 x 96 x .25 inches each, 294 x 96 x 36 inches overall







*Cahokia Byobu (Broken Screen) with Sound and Light Show, 2011*

Mirror pane glass, rammed earth with cement, shells, mason's line, 16mm film strips, glass shards, with two channel, three-phase light sequence, 8 minutes, looped, and digital audio file transferred from Before the Sun 12 inch vinyl LP, 32 minutes, looped





*Cahokia Byobu (Broken Screen) with Sound and Light Show, 2011*

Mirror pane glass, rammed earth with cement, shells, mason's line, 16mm film strips, glass shards, with two channel, three-phase light sequence, 8 minutes, looped, and digital audio file transferred from Before the Sun 12 inch vinyl LP, 32 minutes, looped





*Cahokia Byobu (Broken Screen) with Sound and Light Show, 2011*

Mirror pane glass, rammed earth with cement, shells, mason's line, 16mm film strips, glass shards, with two channel, three-phase light sequence, 8 minutes, looped, and digital audio file transferred from Before the Sun 12 inch vinyl LP, 32 minutes, looped





*Cahokia Byobu (Broken Screen) with Sound and Light Show, 2011*

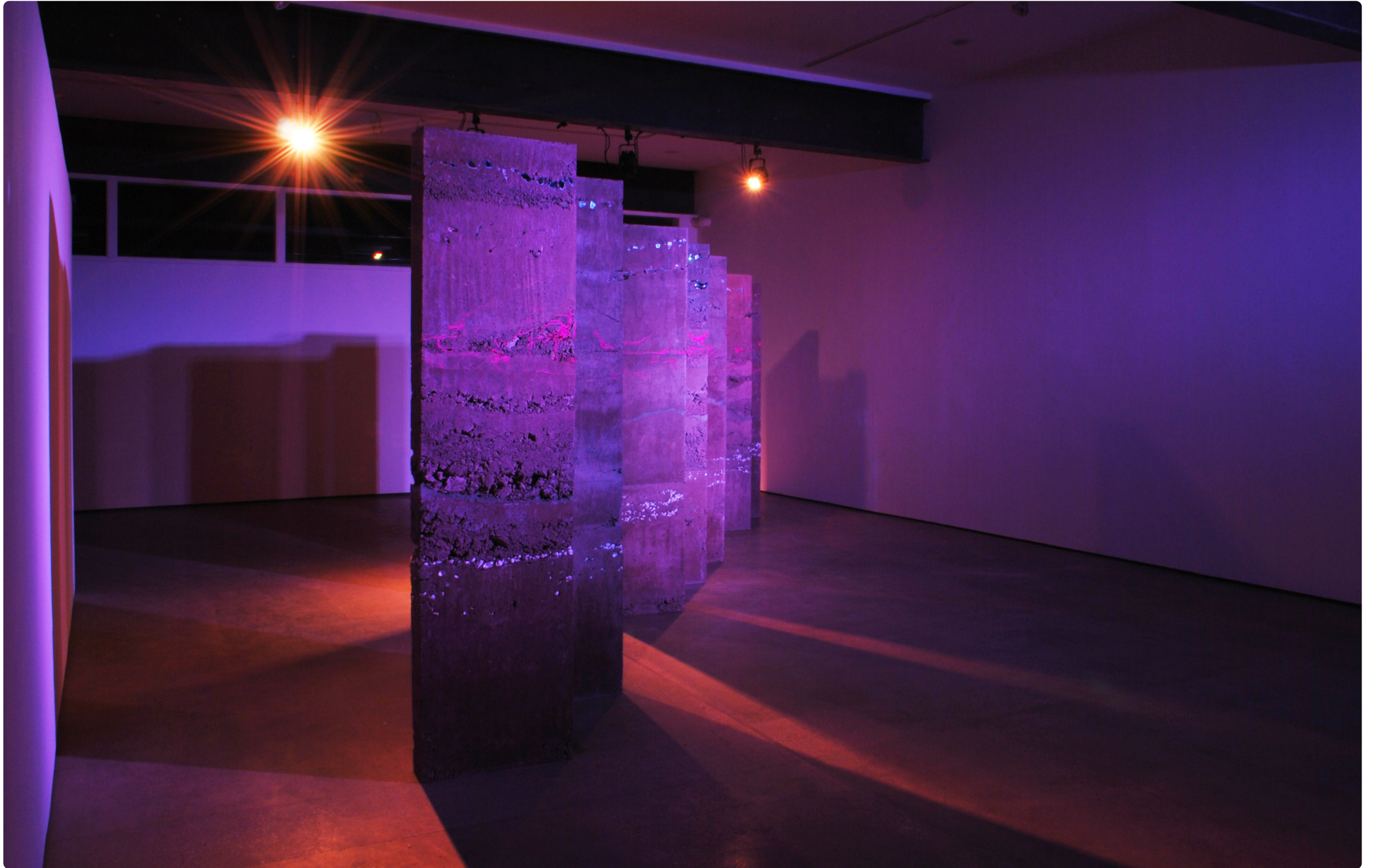
Mirror pane glass, rammed earth with cement, shells, mason's line, 16mm film strips, glass shards, with two channel, three-phase light sequence, 8 minutes, looped, and digital audio file transferred from Before the Sun 12 inch vinyl LP, 32 minutes, looped





Detail of *Cahokia Byobu (Broken Screen) with Light and Sound Show*, 2011





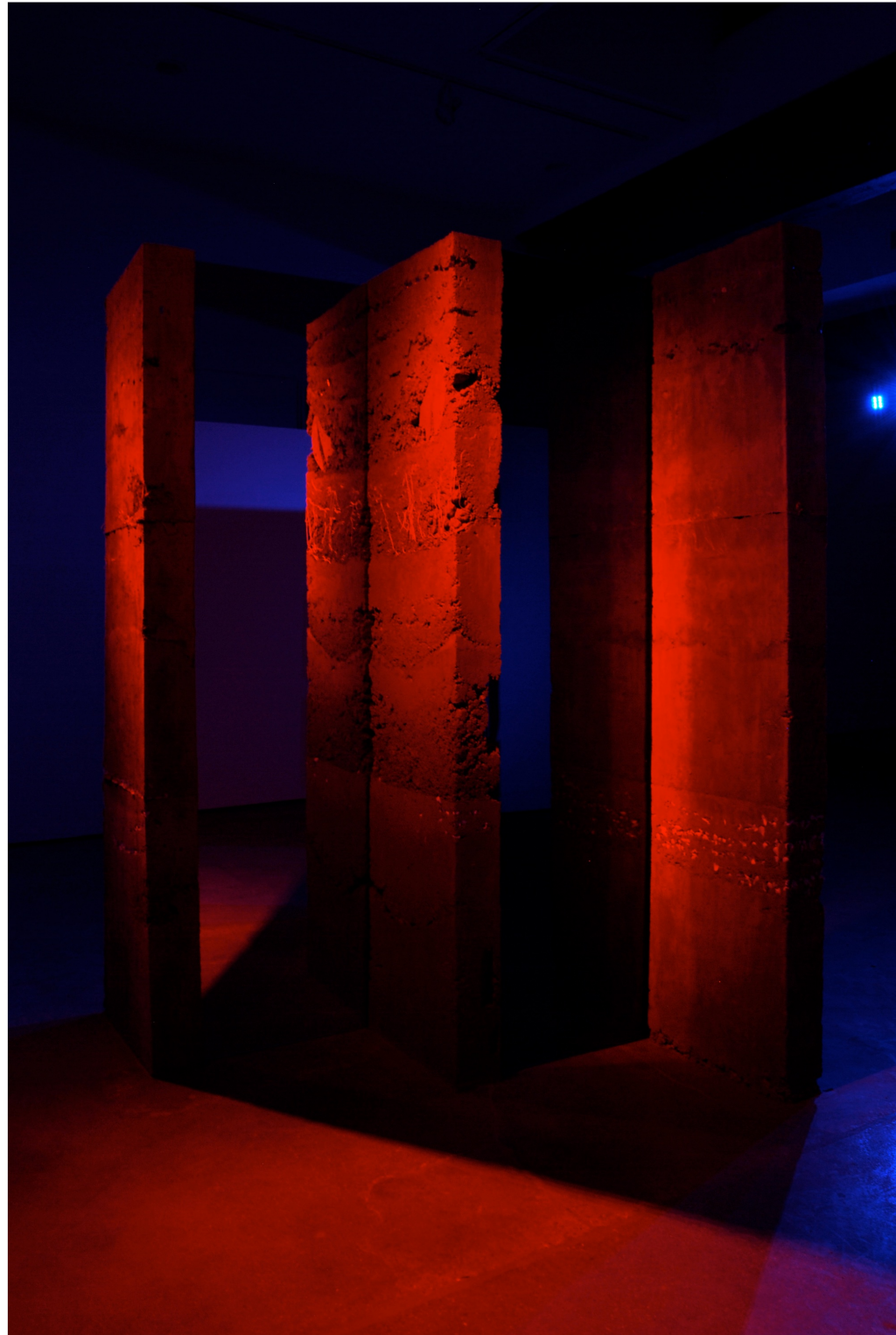
Detail of *Cahokia Byobu (Broken Screen) with Light and Sound Show*, 2011





Detail of *Cahokia Byobu (Broken Screen) with Light and Sound Show*, 2011



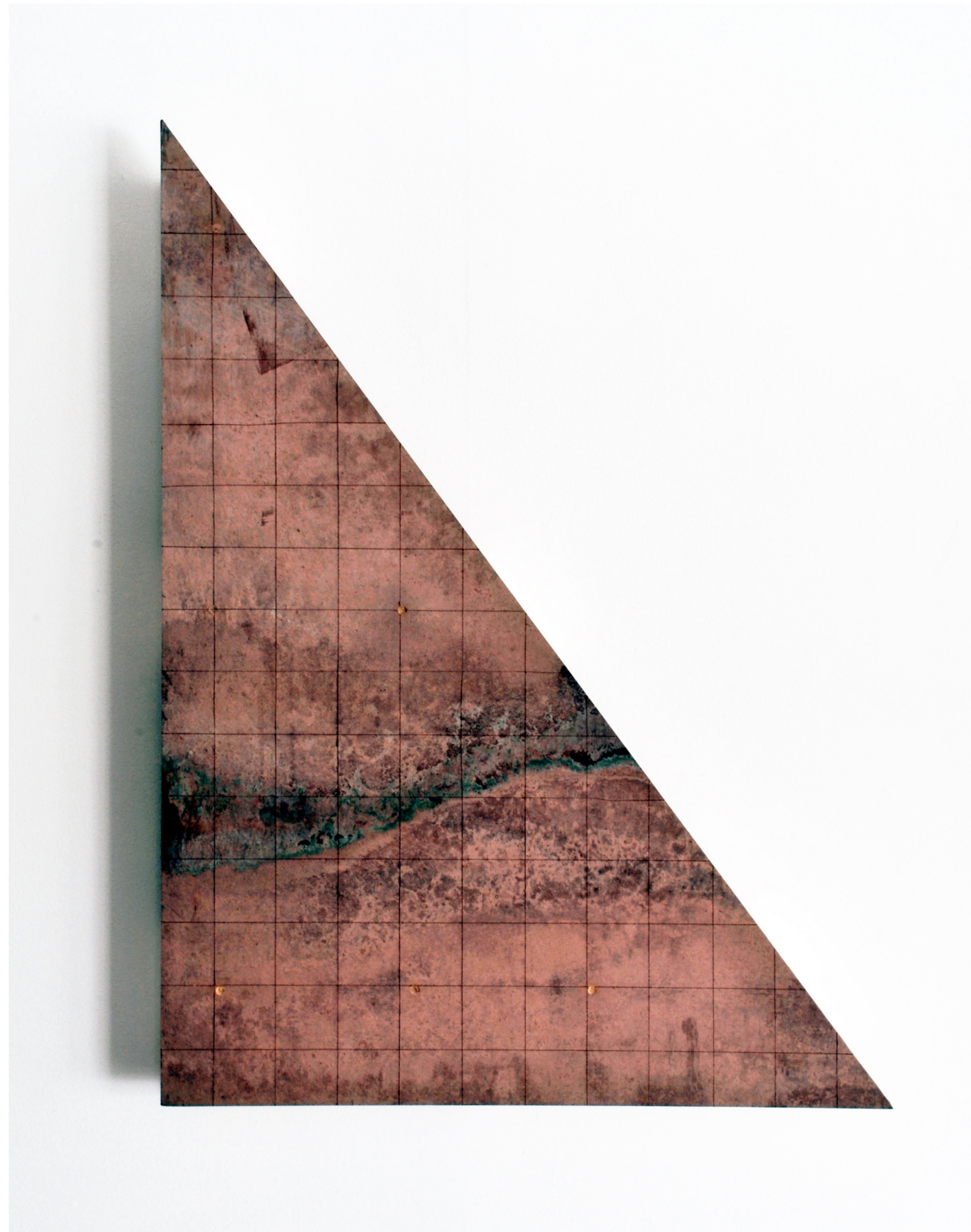


Detail of *Cahokia Byobu (Broken Screen) with Light and Sound Show*, 2011



Detail of *Cahokia Byobu (Broken Screen) with Light and Sound Show*, 2011

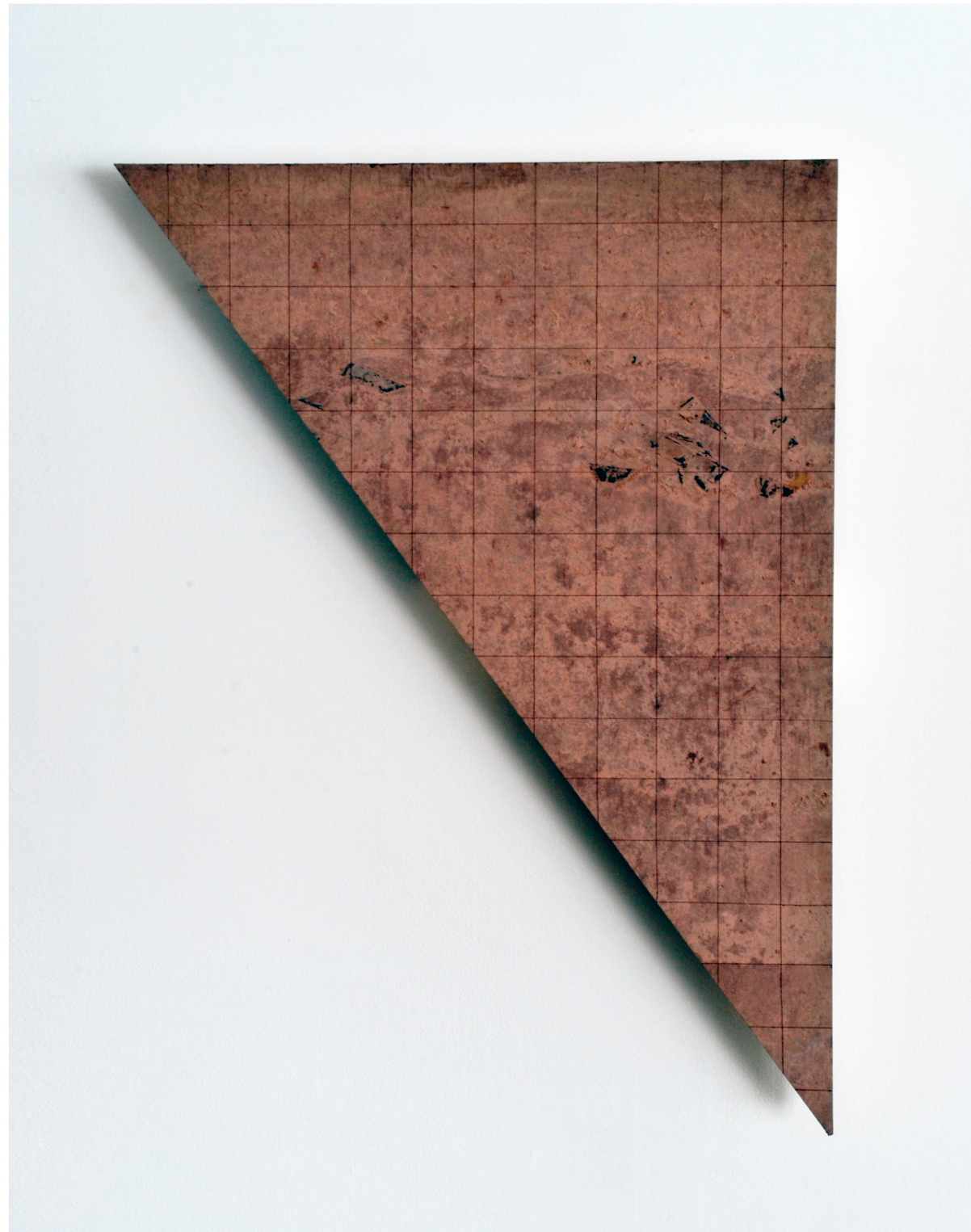




*Shard B2a, 2011*

Incision, earth, and cement on plywood with 2 x 4's, 23.5 x 31.5 x 2.25 inches





*Shard C3b, 2011*

Incision, earth, and 16mm film emulsion on plywood with 2 x 4's, 23.5 x 31.5 x 2.25 inches

## WHITE FLAG PROJECTS

# *Karthik Pandian*

### Selected Solo Exhibitions

2012

Vilma Gold, London

2011

*Elements of Style*, White Flag Projects, St. Louis

2010

*Unearth*, Whitney Museum of American Art, New York

*Before the Sun*, Midway Contemporary Art, Minneapolis (cat.)

*1991*, Curated by\_Vienna 2010, (with Mathias Poledna), Galerie Meyer Kainer, Vienna, Austria

2009

*Darkroom*, Richard Telles Fine Art, Los Angeles

### Selected Group Exhibitions

2012

*Made In L.A.*, Los Angeles Biennial, Hammer Museum, Los Angeles

La Triennale, Intense Proximity, Palais de Tokyo

Group show, curated by Jay Heikes, Frederica Schiavo, Rome

Marrakech Biennale 4, Higher Atlas, Morocco



2011

*On Forgery: Is One Thing Better Than Another?*, LAXART, Los Angeles, curated by Andrew Berardini and Lesley Moon

*US EST*, Pepin Moore, Los Angeles, curated by Soo Kim

2010

Musee Los Angeles, Los Angeles

2009

*Round Up*, Richard Telles Fine Art, Los Angeles

2008

*Space as a Space*, Bonelli Contemporary, Los Angeles

2007

*My Buddy: UCLA New Wight Biennial*, New Wight Gallery, Los Angeles

2001

Al Nitaq Art Festival, Cairo

Texts

2012

*The LA Times*

2011

*Artweek.LA*

*The LA Times*

*E-Flux*

*Whitney Musuem of American Art*

*Mousse*

2010

City Pages

Art in America

## Education

2008, M.F.A, Art Center College of Design, Pasadena

2008, Staatliche Hochschule fur Bildende Kunste Staedelschule, Frankfurt, Germany

2003, B.A., Brown University, Providence, Rhode Island

Born 1981 in Los Angeles.

Lives and works in Los Angeles.

WHITE FLAG PROJECTS

# *Karthik Pandian: Elements of Style*

Matthew Strauss

*Founder/Director*

Jessica Baran

*Assistant Director*

Taylor Crossland, H. Lindsay Donahue, Simon Rhim, and Mel Trad.

*Interns*

*Elements of Style* has been made possible with support from The Andy Warhol Foundation for the Visual Arts, the White Flag Projects Board of Directors, and our members. Opening reception sponsored in part by Schlafly Beer.

Special thanks to Dr. John E. Kelly, The Cahokia Mounds Museum Society, and Jay, Laurie, Paige and Rita Johnston.

WHITE FLAG PROJECTS

4568 Manchester Avenue

Saint Louis, Missouri 63110

[www.whiteflagprojects.org](http://www.whiteflagprojects.org)