

New & Featured Products

Church & Chapel Metal Arts is a family owned and operated business, since 1933.

Church & Chapel offers complete line of supplies to the funeral home industry, including torchiere lamps, lecterns, kneelers, cremation urns, and many other products necessary to the delivery of funeral service. Included in this catalog are furniture and signage products manufactured in Church & Chapel's own plant. Their skilled craftsmen ensure the utmost in quality and attention to detail.

Personal attention to customers' needs is paramount at Church & Chapel. Because so many Church & Chapel products are made-to-order, many of these items are available in custom sizes, finishes and configurations.

To place an order, contact your local Church & Chapel representative.



AA 8504-LG-10

The Comp-Directory System

This is the fastest, easiest way to display announcements. Print the announcement on your computer, then slip it into the frame for a distinguished display. Available in a wide variety of pedestal and wall-mounted styles. (See pages 38-40)



CC 8000

Lamps

Church & Chapel manufactures lamps in a wide variety of dignified styles. (see page 37)



Many of Church & Chapel's products are custom-made in our own factory by artisans with years of experience.



CC 522

Register Stands

Church & Chapel's selection of high-quality register stands is among the most complete in the industry. With their distinguished designs and exceptional craftsmanship, these register stands will reinforce that subtle feeling of dignity and quality that you wish for all your visitors. (See page 33)

New & Featured Products



Celebration of Life *magnetic display board*

The ideal way to display photos, notes and other memorabilia, to help families celebrate the life of the deceased. Magnetic mats quickly and securely hold items against display board. Available in a variety of sizes, colors and frame styles. (see page 42-43)



Illinois Prairie *furniture collection*

The Illinois Prairie features solid Oak Wood construction beautifully designed to compliment any Funeral Home. The Prairie Style Post gives this set a sophisticated unique look. Constructed of all Oak Wood with Bronze finished metal highlights. (see page 2-3)

Table of Contents

FURNITURE SETS..... 2-27

Illinois Prairie.....	2-3
Regency.....	4-5
New Bostonian.....	6-7
Chicagoan.....	8-9
Versailles.....	10-11
Williamsburg.....	12-13
Lord Baltimore.....	14-15
Dominican.....	16-17
Majestic.....	18-19
Imperial.....	20-21
Royal.....	22-23
Virtuoso.....	24-25
Criterion.....	26-27

OTHER FURNITURE 28-37

Casket Biers & Displays.....	28-29
Commemorative Displays.....	30
Contribution Boxes.....	31
Lecterns.....	32
Register Stands.....	33
Sound Systems.....	34
Wall Register Desks.....	35
Lamps & Accessories.....	36-37

DIRECTORIES 38-47

Comp-Directory System.....	38-40
Directory Options.....	41
Celebration of Life.....	42-43
Family Memories Display System.....	44
Groove Boards.....	45-47

OTHER..... 48-64

Candles.....	48-49
Molded Pedestals & Urns.....	50
Floral Display Systems.....	51-53
Literature Racks.....	54
Seating Signs.....	55
Traffic & Vehicle Needs.....	56-58
Miscellaneous Needs.....	59
Necessities and Niceties.....	60
Jewish Service Needs.....	61
Crucifixes & Rosaries.....	62
Memorial Altar & Display Tray.....	63
Cemetery Needs.....	64

BODY HANDLING & PREP 65-69

Operating & Dressing Tables.....	65
Trucks & Roller Systems.....	66
Mortuary Cots.....	67
Lifters & Transport Trucks.....	67-69

Illinois Prairie



Chapel Set

This all Oak Wood Group is beautifully designed to compliment any Funeral Home. The Prairie Style Post gives this set a sophisticated unique look. Constructed of all Oak Wood with bronze finished metal highlights.

TORCHIERE LAMPS—CC 5238

All oak wood torchiere lamps have a 3-way mogul base socket and a 16" diameter Tiffany Shade.
Overall height 69½".

REPLACEMENT TORCHIERE SHADES—CB 52

16" diameter at widest point.

FLAG STAND—CC 5254

Triangular open-face stand proudly accepts a folded flag. In solid Oak Wood finish, on matching Oak Wood Pedestal (not Shown).

LECTERN/REGISTER—CC 5242

Matching all Oak Wood Lectern has 21" x 11¼" writing surface. Overall dimensions are: 53"H x 21½"W x 15½"D. Reflector lamp is bronze finish with concealed wiring. Large open Storage Shelf for Minister's books, notes or extra cards and pages for guest book

CASKET BIER—CC 5247

The unique Prairie Style front panel and posts compliment the entire Chapel Set. 5" swivel casters assures easy movement. Large 1¼" Rubber Bumpers holds casket firmly. Measurements: 65"L x 25"W x 22"H.



Devotional Set

PRAYER RAIL—CC 5727

Solid Oak construction. Padded foam upholstery on kneeler. Made with a sturdy metal frame. Measuring a full 44" W x 31" H x 20"D.

CANDLESTICKS—CC 5229

Solid Oak Wood, complete with candle glass holder. Holds all standard candles. 51" overall height. Replacement Ruby candle holder available — model *CB 53* for wax candles or electric 8 3/4" x 4 1/4". Electrification extra (*please specify*).

CRUCIFIX—CC 5234

Solid Oak Cross with Bronze plated Corpus and INRI. Complete with adjustable tripod stand. Cross measures 17"W x 33"H.

CC 5234 Traditional Crucifix complete with Adjustable Stand

Also Available:

CC 5235 Risen Christ Crucifix complete with Adjustable Stand

CC 5236 Plain Cross complete with Adjustable Stand

CC 5237 Traditional Crucifix only, with attaching bracket. No Stand.

CC 5232 Risen Christ Crucifix only, with attaching bracket. No Stand.

CC 5239 Plain Cross only, No Corpus, with attaching bracket. No Stand.

MASS CARD HOLDER—CC 5231, CC 5233

Mass Card Holder without Springs (shown) Top Tray has 1 1/2" trim on 4 sides. Measures: 16" D x 20" W. Overall height: 45 1/2". Tray has removable cross.

CC 5231 Without springs

CC 5233 With set of 2 springs

CONTRIBUTION BOX—CC 5251, CC 5252

Contribution Box with matching stand (not shown). All Oak Wood construction with three Plexiglass panels, rear door lock and key for easy access. Overall height: 43 1/2".

CC 5251 Contribution Box with Stand

CC 5252 Oak Contribution Box only

PEDESTAL—CB 6836

Constructed of Solid Oak Wood. Turned & fluted to precision. 36" H x 12 1/4" Dia. English Oak finish. Also available constructed in Maple Wood in White, Walnut, Burnt Maple or Cherry finish.

CB 6836-22 36" pedestal, English Oak finish

CB 6836-21 36" pedestal, Cherry finish

CB 6836-27 36" pedestal, White

CB 6836-20 36" pedestal, Walnut finish

CB 6836-25 36" pedestal, Burnt Maple finish

FLORAL VASE—CE HP 746

Ivory ceramic Floral Vase with Handles. Measures: 15"H x 12" diameter.



Chapel Set

This all Cherry Wood Grouping is beautifully designed to compliment any Funeral Home. The intricately carved posts with Brass tipped feet give this set a sophisticated unique look.

TORCHIERE LAMPS—CC 838

Solid cherry wood torchiere lamps have a 3-way mogul base socket and a 16" diameter glass shade. Stand has Brass tipped feet. Overall height 69".

REPLACEMENT SHADES—CB 145

16" diameter at widest point. 2¾" shank.

LECTERN/REGISTER—CC 842

Matching all Cherry Wood Lectern features Queen Anne Style sturdy legs. Large Reflector Lamp is Bronze finish with concealed wiring. Storage compartment with door allows room for Extra Register books and other memorial products. Writing surface measures 25½"W x 15"D. Overall dimensions are: 52"H x 27"W x 20"D.

PLANT STAND—CC 816

Matching all Cherry Wood construction with brass tipped feet to blend with the overall design of the lamps. Measures 36"H x 12" diameter.

CASKET BIER—CC 847

The unique front panel and graceful posts compliment the entire group. 5" swivel casters assures easy movement. Large 1¼" Rubber Bumpers holds casket firmly. Measurements: 65"L x 25"W x 22"H.



Devotional Set

PRAYER RAIL—CC 827

Constructed of Solid Cherry Wood. Large padded foam upholstery on kneeler. Measuring a full 44" W x 28½" H x 20"D.

CANDLESTICKS—CC 829

Solid Cherry Wood, complete with ruby glass holder. Holds all standard candles. 53 ¾" overall height. Replacement Ruby glass available
CB FB-1 for wax candles
CB FB-2 for electric Electrification extra (*please specify*)

CRUCIFIX—CC 834

Solid Cherry Cross with Bronze plated Corpus and INRI. Complete with adjustable tripod stand. Cross measures 17"W x 33"H.

CC 834 Traditional Crucifix complete with Adjustable Stand

Also Available:

CC 834PC Plain Cross complete with Adjustable Stand

CC 834RC Risen Christ Crucifix complete with Adjustable Stand

CC 837 Traditional Crucifix only, with attaching bracket. No Stand.

CC 832 Risen Christ Crucifix with attaching bracket. No Stand.

CC 839 Plain Cross with attaching Bracket, No Stand.

MASS CARD HOLDER—CC 831, CC 833

Mass Card Holder without Springs (shown) Top Tray has 1½" trim on 4 sides. Measures: 20"W x 16" D. Overall height: 45½". Tray has removable cross. Available with springs or plain.

CC 831 Without springs

CC 833 With set of 2 springs

CONTRIBUTION BOX—CC 851, CC 952

Contribution Box with matching stand. All Cherry Wood construction with Brass tipped feet. Contribution box features three Plexiglass panels with rear door lock and key for easy access. Overall height: 43½".

CC 851 Cherry Contribution Box with Stand

CC 952 Cherry Contribution Box only (not shown)

FLAG STAND—CC 854

Triangular open-face stand proudly accepts a folded flag. In solid Cherry Wood finish, on matching Cherry Wood Pedestal (not Shown).

New Bostonian



Chapel Set

TORCHIERE LAMPS—CC 938

Solid Cherry wood base and turned columns blended with Bronze finish metal holder. Glass measures 16" in diameter. 3-way mogul socket. Overall height 68¾". Cherry finish.

REPLACEMENT SHADES—CB 145

16" diameter at widest point. 2¾" shank—Nu Gold.

LECTERN—CC 942, CC 386

Matching turned solid Cherry posts to blend with the overall design of the Lamps and Casket Bier. Comes with plain design center. Card pockets are made large enough to accommodate the larger cards. Inside measurements are 4⅞" W x ¾" D. Reflector lamp is all wood with the wiring concealed to come out at the bottom of the base. Has a shelf to hold extra books for the minister or speaker. Writing desk will accommodate 12½" D x 20¼" W register book. Overall height is 52¼".

CC 942 Cherry finish

CC 386 Message Board

CASKET BIER—CC 947

All Cherry wood construction throughout with turned Cherry posts and panels, decorative designs in center panel on one side, plain panel on other side. 5" swivel casters assures easy movement. Rubber protective bumpers. Measures 25" W x 65" L x 22" H. Cherry finish.

FLAG STAND—CC 954

Triangular open-face stand proudly accepts a folded flag. In Solid Cherry finish, on matching Cherry wood pedestal (*not shown*).

CANDLESTICK—CC 929

Shown with Pascal Conversion Kit (*see page 48*).





Devotional Set

The Solid Cherry turned columns and bases finished in Cherry truly make a warm home setting. The metal holders are plated in Antique Bronze to blend with the natural wood.

PRAYER RAIL—CC 927

Solid Cherry construction. Padded foam upholstery on kneeler and arm rest. 40" W x 21" D x 30"H.

CANDLESTICKS—CC 929

Matching Cherry wood base and turned columns blended with Bronze finish metal holder complete with Ruby glass. Holds all standard candles. 53" overall height. Replacement Ruby glass candlestick holders available — model *CB FB-1* for wax candles, *CB FB-2* for electric (see page 49). Electrification extra (please specify).

CRUCIFIX—CC 934

Solid Cherry Cross with Bronze plated corpus. Complete with adjustable tripod stand. Cross measures 33" x 17".

CC 934 Crucifix, Cherry finish

Also Available:

CC 934RC Risen Christ Corpus, Cherry finish (not shown)

CC 934PC Plain Cross, Cherry finish (not shown)

CC 934PCB Plain Cross, Cherry finish, with attaching bracket, no tripod

MASS CARD HOLDER—CC 931, CC 933

Top tray has 1½" trim on four sides. Measures 16" x 20" overall by 46¼" H. Features 40½" to top of tray. Removable cross. Available with springs or plain.

CC 931 Without springs, Cherry finish

CC 933 With set of 2 springs, Cherry finish

PEDESTAL—CB 6836

Constructed of Maple wood. Turned and fluted to precision. 36" H x 12¼" Dia. Cherry Finish. Also available in White, Walnut, Burnt Maple, or English Oak finish.

CB 6836-21 36" pedestal, Cherry finish

CB 6836-27 36" pedestal, White

CB 6836-20 36" pedestal, Walnut finish

CB 6836-25 36" pedestal, Burnt Maple finish

CB 6836-22 36" pedestal, English Oak finish

CONTRIBUTION BOX—CC 951, CC 952

Contribution Box on Bostonian stand complete with sturdy all-Cherry construction. Stand features 3 sides, see-through Plexiglas with rear door lock and key for easy access. Cherry finish.

CC 951 Cherry Contribution Box w. stand

CC 952 Cherry Contribution Box only, for tabletop use, or for adapting to your stand



Chicagoan



Chapel Set

TORCHIERE LAMPS—CC 685

Matching Oak wood base and turned columns blended with bronze finish metal holder. Glass measures 13½" in diameter. 3-way mogul socket. Overall height 66 ¾" H. Solid English Oak.

REPLACEMENT SHADES—CB 9234

13½" diameter at widest point. 3%" tapered shank—Nu Gold.

LECTERN—CC 687, CC 386

Matching turned solid Oak posts to blend with the overall design of the Lamps and Casket Bier. Comes with decorative grill work. Card pockets are made large enough to accommodate the larger cards. Inside measurements are 4¾" W x 7¼" D. Reflector lamp is bronze plated with the wiring concealed to come out at the bottom of the base. Has a shield to hold extra books for the minister or speaker. Writing desk measures 16" D x 20¼" W. Overall height is 53¼" H.

CC 687 Solid Oak Lectern
CC 386 Message Board

CASKET BIER—CC 686

All Oak wood construction throughout with turned Oak posts and panels, decorative grill work in center panel on one side, plain panel on other side. 5" swivel casters assures easy movement. Rubber protective bumpers. Measures 25" W x 65" L x 22"H. Solid English Oak.

PROTESTANT CROSS—CC 484PC, CC 484PCB

All solid Oak wood cross complete with tripod stand.

CC 484PC Plain cross

CC 484PCB Plain cross with attaching bracket, no tripod stand

PEDESTAL—CB 6836

Constructed of Maple wood. Turned and fluted to precision. 36" H x 12¼" Dia. Painted in a rich white. Also available in Walnut, Burnt Maple Fruitwood, Cherry, or English Oak finish.

CB 6836-27 36" pedestal, White

CB 6836-20 36" pedestal, Walnut

CB 6836-25 36" pedestal, Burnt Maple Fruitwood

CB 6836-21 36" pedestal, Cherry

CB 6836-22 36" pedestal, English Oak



Devotional Set

The solid Oak turned columns and bases finished in rich English Oak truly make a warm home setting. The metal holders are plated in Antique Bronze to blend with the natural wood.

PRAYER RAIL—CC 680

Padded foam upholstery on kneeler and arm rest. 39¼" W x 19" D x 32½" H. Solid English Oak.

CANDLESTICKS—CC 681

Complete with Ruby glass. Holds all standard candles. Overall 53¼" H. Solid English Oak. Replacement Ruby mortuary glasses available — model *CB FB-1* for wax candles, *CB FB-2* for electric (see page 49). Electrification extra (please specify).

MASS CARD HOLDER—CC 682, CC 683-SS

Top tray has 1½" trim on four sides. Measures 16" x 20" overall by 45½" H. Removable cross. Available with springs or plain.

CC 682 Without springs

CC 683-SS With set of 2 springs

TORCHIERE LAMPS—CC 685

Matching Oak wood base and turned columns blended with Bronze finish metal holder. Glass holder measures 13½" diameter. 3-way mogul socket. Overall height 66¼" H. Solid English Oak

REPLACEMENT SHADES—CB 9234

13½" diameter at widest point. 3⅝" tapered shank—Nu Gold.

CRUCIFIX—CC 484CX, CC 484RC

Solid English Oak cross with Bronze plated corpus. Complete with adjustable tripod stand. Cross measures 33" x 17".

CC 484CX Crucifix

CC 484RC Risen Christ Corpus (not shown)

FLAG STAND—CC 654

Triangular open-face stand proudly accepts a folded flag. In Solid Oak finish, on matching Oak wood pedestal.





Chapel Set

TORCHIERE LAMPS—CC 738

In classic design utilizing gently tapered hand-carved columns on a scalloped base. Hand blown Nu Gold glass supported on a Bronze top, 3-way mogul base sockets. Fruitwood.

REPLACEMENT GLASS REFLECTOR—CB 231

11" diameter at widest point. 4" shank.

LECTERN—CC 742, CC 744, CC 746

In a matching hand-carved design. Gracefully framed grill work beautifully reflects your entire chapel. Harmonizes with Bier and Prayer Rail. Complete with provincial card pockets. Optional pen and bulletin board.

CC 742 Fruitwood

CC 744 Pen with chain—Black with Gold

CC 746 Announcement Board

CASKET BIER—CC 747

A wonderful blend of select solid Cherry wood construction. The hand-carved corner posts and panels, plus the decorative grill work on either side, create a superb furniture piece you will be proud to own. Rubber protective bumpers, silent easy-rolling 5" casters.

Fruitwood.

ANNOUNCEMENT STAND—CC 755, CC 756

Matching stand with scalloped removable letter directory. Black felt. Overall height is 72"H. Directory 20½" W x 28¾" H. Fruitwood finish. *(not shown)*

CC 755 Announcement Stand complete

CC 756 Directory board-only (for wall mounting)

AA 20-300 recommended ¾" Roman Art letters in free compartment box



Devotional Set

PRAYER RAIL—CC 727

Detailed in French Provincial manner. Decorative grill work inserted over luxurious upholstery of your choice. Delicate hand carved frame with turned furniture legs. Thick foam padded upholstery on kneeler and handrail. 29" H x 38½" W x 16½" D with tip-proof support.

CANDLESTICKS/SANCTUARY LAMPS—CC 729

Carved, tapered columns set on scalloped furniture base. Unique all-in-one unit. 72 or 96 hour candles may be used in Ruby glass cylinders which fit the cut-out Bronze holders. 50" overall. Replacement Ruby mortuary glasses available — model *CB FB-1* for wax candles, *CB FB-2* for electric (see page 49). Electrification extra (please specify).

MASS CARD HOLDER—CC 731, CC 733

Hand carved and executed in the finest furniture tradition. Scalloped tray 21" x 16" centered with miniature cross. Optional springs hold approximately 200 cards in upright position.

CC 731 Fruitwood without springs

CC 733 Fruitwood, with set of 2 springs

CRUCIFIX—CC 734

CC 734 Cherry wood, scalloped edges with magnificent Bronze-plated corpora with telescoping tripod stand. Cross measures 17"W x 33"H.

Also available:

CC 734 RC same as above, but with Risen Christ corpus

CC 734 PC Plain Cross (same as above, but no corpus)

CC 734 PCB Plain Cross, with attaching bracket, no tripod stand

TORCHIERE LAMPS—CC 738

In classic design utilizing gently tapered hand-carved columns on a scalloped base. Hand blown Nu Gold glass supported on a Bronze top, 3-way mogul base sockets.

REPLACEMENT GLASS REFLECTOR—CB 231

11" diameter at widest point. 4" shank.

FLAG STAND—CC 754

Triangular open-face stand proudly accepts a folded flag. In Fruitwood finish, on matching Fruitwood wood pedestal (not shown).



Chapel Set

No Stand. Our Williamsburg group is made from solid hardwood Maple and finished in warm Burnt Maple finish. Also available in Walnut finish. *Please specify.*

CASKET BIER—CC 50011-9

Solid Maple with mar-proof Formica top. Authentically paneled and routed. Massive spindles on all four corners. Rubber protective bumpers, silent easy-rolling 5" casters.

TORCHIERE LAMPS—CC 50013-5

Designed for colonial beauty as well as extra stability. Turned spindle columns are set on solid wood base. Antique Brass metal tops hold beautifully pressed glass shade.

REPLACEMENT GLASS REFLECTOR—CB 231

11" diameter at widest point, 4" shank.

REGISTER LECTERN—CC 50014-3

Unique front panel and graceful spindle legs supported by perfectly stable square base. A fine piece of furniture with all the extras to make it practical. Ample storage space. Card holders on each side. Writing desk 16" x 20". Antique Brass lamp with concealed wiring. Overall height 52", center of desk 42".



Devotional Set

PRAYER RAIL—CC 50017-8

Features a grained panel with turned spindles on either side. Thick foam rubber padded kneeler upholstered in velvet fabric or washable vinyl, in a variety of colors. Arm rest may be upholstered to match if desired at no extra charge. Please specify. 38" L x 31" H x 14" D.

CANDLESTICKS/SANCTUARY LAMPS—CC 50018-6

One piece design complete with ruby glass cylinders. Holds any standard 72 or 96 hour candle. Replacement Ruby mortuary glasses available — model *CB FB-1* for wax candles, *CB FB-2* for electric (*see page 49*). Electrification extra (*please specify*).

MASS CARD HOLDER—CC 50019-4, CC 50020-8

Comes with framed upper tray, 16" x 20" x 2½". Wood cross forms the center background. Two springs hold up to 100 cards, upright. 41" high to tray.

CC 50019-4 With springs

CC 50020-8 Without springs

CRUCIFIX—CC 50021-6

CC 50021-6 Matching Maple finish mounted on telescopic tripod stand. Complimented with Bronze plated metal corpus. 17" W x 33" H.

Also available:

CC 50024 RC same as above, but with Risen Christ corpus

CC 50023 PC Plain Cross (same as above, but no corpus)

CC 50022 PCB Plain Cross, with attaching bracket, no tripod stand

FLAG STAND—CC 50054

Triangular open-face stand proudly accepts a folded flag. In Solid Hardwood Maple finish, on matching Maple wood pedestal (*not shown*).

All pieces also available in Walnut finish. *Please specify*.

Lord Baltimore



Chapel Set

TORCHIERE LAMPS—CC 4100

Oak wood matching columns blended with Bronze metal finish on a 12" base. Beautiful glass mounted on the Bronze finish metal holder. Mogul base socket to accommodate 100/200/300 watt 3-way bulb. Overall height is 66½".

REPLACEMENT GLASS REFLECTOR—CB 10083

13¾" diameter at widest point, 3¾" tapered shank.

LECTERN—CC 4101

Massive Oak wood minister's lectern can be used as register desk. Lamp comes with concealed wiring and has pockets that may be used to store cards and other information. Writing surface measures 22" x 12½". Overall height is 52".

CASKET BIER—CC 4102

Oak wood posts and panels blended with solid wood top. The 5" swivel casters and "V" design in the center of the skirt, permits ease in clearing threshold and other floor obstructions. Rubber protective bumpers on top. 65" L x 25" W.

LOBBY ANNOUNCEMENT—CC 4120, CC 4121

Fashioned in Oak wood and stained in a rich English Oak finish. Custom made with a cornice top. Reinforced base measures 20" x 20" with single pedestal post. Bulletin board is illustrated with black felt grooved board measuring 20" W x 25" H. 65" overall height. Available open face or glass front with removable back.

CC 4120 Without glass

CC 4121 With glass front and removable back

AA 20-300 recommended ¾" Roman Art letters in free compartment box.

COLORED FELT ALSO AVAILABLE (extra charge)

Colors available: Dark Brown, Burgundy, Navy, Royal Blue, Medium Blue, Dark Green, Kelly Green, Olive, Gold, Rust, Red and Yellow.

Lord Baltimore



Devotional Set

Contemporary in design combining rich English Oak and a Bronze metal finish, lending an air of warmth and dignity to create a residential feeling that is so desirable. The metal is plated in an Antique Brass finish and lacquered for protection.

PRAYER RAIL—CC 4103

Thick foam padded upholstery on kneeler.
32" H x 40" W x 21" D with tip-proof supports.

CANDLESTICKS—CC 4104, CE CT14

Metal plated base measures 12" overall height, including vigil glass 53½". Will accommodate most candles. Replacement Ruby mortuary glasses available — model *CB FB-1* for wax candles, *CB FB-2* for electric (see page 49). Electrification extra (please specify).

CC 4104 Candlestick with Metal Holder and Ruby Glass

CE CT14 Optional Candle tube, 2" x 14"

MASS CARD HOLDER—CC 4105, CC 4105-SS

Framed tray measures 16" x 20" x 2⅞". Wood Cross is removable from its dowel support. Overall height 43".

CC 4105 Without springs

CC 4105-SS With set of 2 springs

CRUCIFIX—CC 4107 RC

Impressive sunburst Cross with plated Risen Christ corpus truly exemplifies the fulfillment of the Resurrection.

CC 4107 RC Risen Christ (sunburst)

Also available:

CC 4106 Crucifix (sunburst) with traditional corpus (not shown)

CC 4108 PC Plain Cross (sunburst) with tripod stand (not shown)

CC 4109 PCB Plain Cross (sunburst) with attaching bracket (no tripod stand) (not shown)

FLAG STAND—CC 4154

Triangular open-face stand proudly accepts a folded flag. In Solid Oak finish, on matching Oak wood pedestal (not shown).



Chapel Set

CASKET BIER—CC 888 WM

Wood grain Walnut Formica. Square corner post with fluted Brass accent trim. 5" silent swivel casters. Heavy cast protective corners. Walnut and Brass.

TORCHIERE LAMPS—CC 8800 WM

A full 67" high with Walnut grain Formica columns separated with fluted Brass decorations. 3-way mogul base socket. Heavy 10" square base.

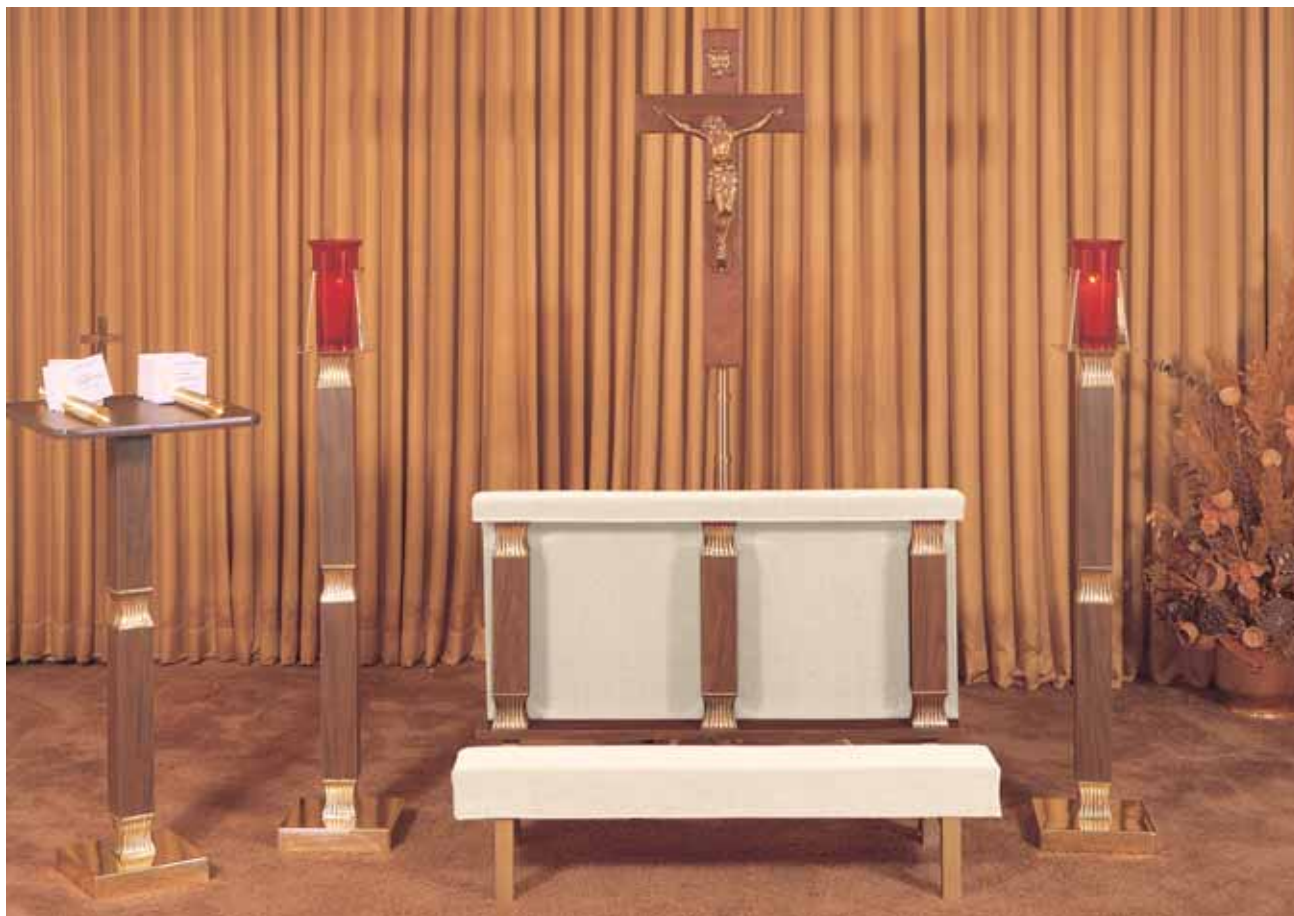
REPLACEMENT GLASS REFLECTOR—CB 11

12" tulip design with standard 2 3/4" neck.

LECTERN—CC 541

Walnut finished veneer with 2 card pockets on each side. Lightweight with concealed wheels. Reflector lamp has hidden wire. Pull out storage drawer. 17" x 22" writing surface. 45" high.

Built in bulletin board, extra.



Devotional Set

PRAYER RAIL—CC 180WM-S, CC 180WM-C

Walnut wood grain Formica with fluted Brass accent trim. Shown in straight back design. Available in curved design. 44" W x 20" D., with tip proof support, 31" H. Your choice of velvet or naugahyde upholstery in heavy padded kneeler and arm rest.

CC 180WM-S Straight back

CC 180WM-C Curved back

CANDLESTICKS—CC 88WM

Complete with Ruby glass candles holder. Electrification extra (*please specify*). Replacement Ruby mortuary glasses available — specify model *CB 518* (*see page 49*).

MASS CARD HOLDER—CC 380WM

Tray measures 17" x 18". Crucifix is removable. Complete with 2 springs.

CRUCIFIX—CC 495

CC 495 Walnut finish wood Cross, 33" x 17".

Complete with tripod stand.

Also available:

CC 496 RC same as above, but with Risen Christ corpus (*not shown*)

CC 497 PC Plain Cross (same as above, but no corpus) (*not shown*)

CC 498 PCB Plain Cross, with attaching bracket, no tripod stand (*not shown*)

FLAG STAND—CC 354 WM

Triangular open-face stand proudly accepts a folded flag. In Solid Walnut finish, on matching Walnut wood grain pedestal (*not shown*).



Chapel Set

CASKET BIER—CC 888

Wood grain Walnut Formica. Square corner post with square Brass metal tubing. 5" casters.

TORCHIERE LAMPS—CC 8800

3" square Walnut Formica center post, 67" H. 10" square Brass base. Mogul base socket to accommodate 3-way bulb.

REPLACEMENT SHADES—CB 11

Replacement shades. 12" diameter. Standard 2¾" neck.

LECTERN—CC 541

Walnut finish hardwood. Heavy in appearance, yet light-weight. Large pull out storage drawer. Concealed wiring. Complete with side pockets. 17" x 22" writing surface. 45" High. Comes with concealed wheels. Optional bulletin board available.

CC 541 With Reflector lamp

Built in bulletin board, extra.



Devotional Set

PRAYER RAIL—CC 180-C, CC 180-S

Contemporary design in Walnut wood grain Formica, accented with Brass metal. Kneeler and arm rest in heavy padded foam rubber. 30½" H x 44" W x 20" D.

Curved as shown or straight back.

CC 180-C Curved back

CC 180-S Straight back

CANDLESTICKS—CC 88

Complete with Ruby glass candle holder. Replacement Ruby mortuary glasses available — specify model *CB 518* (see page 49). Electrification extra (please specify).

MASS CARD HOLDER—CC 380

Complete with 2 springs and cross.

Top measures 17" x 18".

CRUCIFIX—CC 495

Walnut cross with Brass plated corpus.

Adjustable tripod stand.

FLAG STAND—CC 354

Triangular open-face stand proudly accepts a folded flag. In Solid Walnut finish, on matching Walnut wood grain pedestal (not shown).



Chapel Set

CASKET BIER—CC 516SK

Solid center panel with Brass finished square tubing on sides. Heavy cast protective corners in Brass. 5" casters. Walnut Formica on all wood ply construction. No particleboard used.

TORCHIERE LAMPS—CC 510SK

Baked enamel tubing with Brass plated glass holder. 10" square base and accent trim, 67" high. 3-way socket on horn shaped glass shade.

REPLACEMENT REFLECTOR—CB 9234

13½" diameter at widest point. 3¾" tapered shank—Nu Gold.

LECTERN—CC 513SK ND

Matching baked enamel tubes and Brass accented base, 17" x 20" table top with concealed wiring reflector lamp. Large metal card pockets. 8¾" x 3¼" message board.

CB 200-B Optional pen set. Black plastic pen and holder with Brass trim and Brass chain.



Devotional Set

PRAYER RAIL—CC 515GSK, CC 515SK

Plaque, in Goldtone, highlights the brass relief of Christ in the Garden of Gethsemane. 40" W x 29" H x 16" D. Square Brass tubing on each side of curved rail.

Aluminum frame with padded arm rest and kneeler.

CC 515GSK With Gethsemane plaque

CC 515SK Without Plaque

CANDLESTICKS/SANCTUARY LAMPS—CC 511SK

Baked enamel finish columns with 10" square Brass plated base. Accented with slender Brass center post. 54" high complete with ventilated cover. Ivory and Brass.

Replacement Ruby mortuary glasses available — model *CB FB-1* for wax candles, *CB FB-2* for electric (see page 49).

Electrification extra (please specify).

MASS CARD HOLDER—CC 512SK

Features extra large open book design. 12 ½" x 23". Slotted to hold Mass or memorial cards. Walnut finish. Stand matches candlesticks in color and design.

CRUCIFIX—CC 495

Walnut wood finish, 17" x 33" on adjustable tripod stand.

FLAG STAND—CC 554 SK

Triangular open-face stand proudly accepts a folded flag. In Solid Walnut finish, with pedestal that matches Imperial candlesticks in color and design (not shown).



Chapel Set

LAMPS—SHC 1500

Consists of 11" Goldtone glass reflector. Has 3-way 100/200/300 watt mogul base sockets. Overall height 66½".

REPLACEMENT GLASS REFLECTOR—CB 231

11" diameter at widest point. 4" shank.

LECTERN—SHC 1501

Has a 22" x 15 ½" Walnut Formica writing surface with 8 ¾" x 3 ¼" announcement board, optional swivel ball-point pen and two card pockets. Overall height is 51".

CB 200-B Optional pen set. Black plastic pen and holder with Brass trim and Brass chain.

CASKET BIER—SHC 1502

Constructed in non-marring Walnut Formica. Quiet, smooth 5" swivel casters. heavy metal corners. 65" L x 21 ½" H.

STOCK FINISHES

Brass/Gold or Brass/Black.



Devotional Set

PRAYER RAIL—*SHC 1503*

Kneeler and hand rest is heavily padded with foam rubber and is upholstered with your choice of velvet or washable naugahyde, in a variety of colors. Measurements are 28 ¼" H x 39 ½" W x 16" D.

CANDLESTICKS—*SHC 1504*

With sanctuary lamps. All candles up to 7-day can be used on this candlestick and sanctuary lamp which is permanently attached. Overall height 51". Replacement Ruby mortuary glasses available — model *CB FB-1* for wax candles, *CB FB-2* for electric (*see page 49*). Electrification extra (*please specify*).

MASS CARD HOLDER—*SHC 1505, SHC 1505-SP*

A Gold gallery encloses the 14 ½" x 17 ½" Walnut Formica tray on this beautiful Mass card holder. Overall height 36".

SHC 1505 Without springs

SHC 1505-SP With set of 2 springs

CRUCIFIX—*SHC 1506*

Walnut finish wood, Cross measures 33" x 17". Corpus available in Brite Brass or Antique Bronze finish. Comes with tripod stand or chains for hanging from ceiling.

FLOWER VASES—*SHC 1507*

On matching pedestals.

FLAG STAND—*SHC 1554*

Triangular open-face stand proudly accepts a folded flag. In Solid Walnut finish. Pedestal matches candlesticks. (*not shown*)

STOCK FINISHES

Brass/Gold or Brass/Black. Special finish add 20%.



Chapel Set

LAMPS—CC 310KL

Gracefully designed, featuring 2" reeded column on 12" base with decorative bottom, 66" tall. Has 3-way 100/200/300 watt mogul base sockets. Antique Bronze finish.

REPLACEMENT GLASS REFLECTOR—CB 11

12" diameter, standard 2¾" shank.

CASKET BIER—CC 316KL

Featuring 3 Bronze plated 2" reeded tubes on each side. Heavy protective corners, easy rolling 5" casters. Rubber bumpers on top. Constructed in non-marring Walnut Formica. 65" L x 21½" H.

REGISTER/LECTERN—CC 314KL

Matching 2" reeded column on 14" base with decorative bottom. Large writing surface with reflector lamp. Measures 42" high to front of writing surface; 54" tall overall to top of light.





Devotional Set

PRAYER RAIL—CC 315KL

Light weight cast aluminum frame with fluted 1¼" tubes and Bronze plated decorative metal. Heavy foam padded upholstery in your choice of velvet or washable naugahyde, in a variety of colors. 29" H x 39½" W x 16" D.

CANDLESTICKS—CC 311KL

Complete with sanctuary lamps and Ruby glass holder includes ventilated top. Antique Bronze. Replacement Ruby mortuary glasses available — model *CB FB-1* for wax candles, *CB FB-2* for electric (*see page 49*). Electrification extra (*please specify*).

MASS CARD HOLDER—CC 312KL

Gold frame top, 14½" x 17½" Walnut Formica tray with 2 springs to hold cards. Bronze finish stand.

CRUCIFIX—CC 495

Walnut finish wood Cross, measures 33" x 17". Antique Bronze corpus. Tripod stand or decorative chains for hanging from ceiling.

FLAG STAND—CC 3354 KL

Triangular open-face stand proudly accepts a folded flag. In Solid Walnut finish, on Bronze finish decorative pedestal to match candlesticks (*not shown*).



Chapel Set

LAMPS—CC 200KC

Decorative base with 2" reeded tubes, 3-way mogul socket and turn switch, 66" high. Antique Bronze.

REPLACEMENT GLASS REFLECTOR—CB 9234

13½" diameter at widest point. 3¾" tapered shank—Nu Gold.

CASKET BIER—CC 206KC

Metal posts at each corner, mar-proof Formica. Combination Antique Bronze and Walnut wood grain Formica. 5" silent ball-bearing casters. Walnut Formica, smooth 5" casters, measures 65" L x 22" H x 25" W.

LECTERN—CC 214KC

Decorative base with 2" reeded tubing. Features Walnut Formica writing surface. Measures 42" high to front of writing surface; 54" tall overall to top of light.





Devotional Set

PRAYER RAIL—CC 205KC

Aluminum frame construction, fluted tube in rich Bronze finish. Padded arm rest and kneeler with drape in matching velvet or Naugahyde. Your choice of colors. Measures 28¼" H x 39½" W x 16" D.

CANDLESTICKS—CC 201KC

With sanctuary lamps permanently attached. Ventilated cover on Ruby glass to accommodate up to 7-day candle. Bronze finish. Replacement Ruby mortuary glasses available — model *CB FB-1* for wax candles, *CB FB-2* for electric (see page 49). Electrification extra (please specify).

MASS CARD HOLDER—CC 202KC, CC 202KC-SS

Gold frame measures 14 ½" x 17 ½" with Walnut Formica tray.

CC 202 KC Without springs

CC 202 KC-SS With set of 2 springs

CRUCIFIX—CC 204 KC

Walnut finish Cross, 33" x 17" with Bronze plated corpus. Comes with adjustable tripod stand.

FLAG STAND—CC 254 KC

Triangular open-face stand proudly accepts a folded flag. In Solid Walnut finish, on Bronze finish filigree pedestal to match candlesticks (not shown).

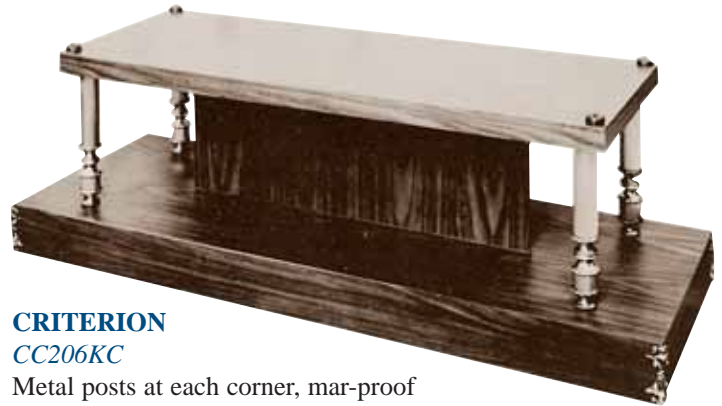
Casket Biers

All casket biers are constructed of AB quality Plywood. No particle board is used.



VERSAILLES
CC747

A wonderful blend of select Cherry wood and mar-proof matching Formica. The hand-carved posts and panels, plus the decorative grill work on either side, create a superb furniture piece you will be proud of. 5" silent ball-bearing casters, decorative corners.



CRITERION
CC206KC

Metal posts at each corner, mar-proof Formica. 65" L x 25" W. Combination Antique Bronze and Walnut wood grain Formica. 5" silent ball-bearing casters.



DOMINICAN
CC888WM

Wood grain Formica. Square corner posts with decorative fluted metal accents and 5" silent ball-bearing casters.



SIMPLICITY
CC666

Constructed of wood grain Formica. 5" silent ball-bearing casters. 65" L x 25"W. Walnut wood grain finish.

MAJESTIC
CC888

Same as CC888 except with Brass accent metal tubing.

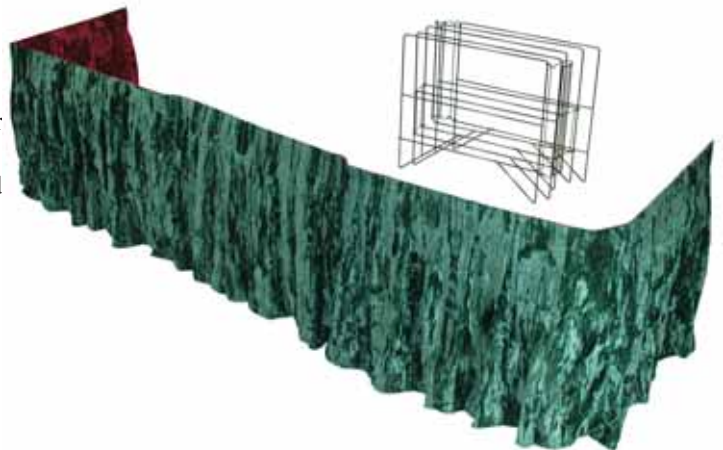
DUODRAPE

Two drapes in one. Choose one color for each side. Each side a complete drape in your choice of colors. Also available in single face.

Five-fold metal wire frame holds drape in position. Special corner hinges allows you to fit any casket corner. Square, round or hexagon. Snug fit every time. Measures 22" H x 132" L. Fits front and two sides of casket.

COLORS IN RIPPLED VELVET: Gold, Cardinal, Green, Steel Grey, Royal Blue, Brandy or Black

- CB4005-2 Duodrape (2-sided), complete with frame
- CB4005-1 Single face (1-sided), complete with frame
- CB4005-F Frame only
- CB4005-1D Single face, drape only
- CB4005-2D Duodrape, double face, drape only



Casket Displays

ACRYLIC CASSET DISPLAY SUPPORTS



Show off the appearance of your more elaborate casket on these handsome supports. Two or three units can hold the heaviest caskets, with a clean look that focuses attention right where it should be — on the casket itself. Heavy, breakproof Acrylic Lucite construction makes it practically indestructible. Grooved interlock goes together quickly, disassembles easily and stores flat to save space. Each panel 22" x 22" x 1/4" thick. Available in Clear or semi-transparent Bronze style.

- CE 4950 Clear Acrylic Lucite Casket Supports
- CE 5950 Bronze Acrylic Lucite Casket Supports



PREMIUM CASSET DISPLAY SYSTEM

Top-of-the-line, two-tier casket display system of rugged formed steel construction is the industry's premier statement of subtle elegance in the casket display room. When fully extended, the fool-proof, scissored dolly is automatically gauged for the proper distance and clearance to eliminate annoying and costly scratches from the casket above. Four 3" heavy-duty ball-bearing wheels roll effortlessly in their own steel tracks, making this the ideal answer for showrooms with and without deep pile carpeting. Bottom tier accepts caskets up to 25" tall. Top tier and dolly easily support up to 400 lbs. Tilt bracket allows top casket to gently tilt forward for better view, if desired. Available in black or or almond color powder-coated finishes. Minimal assembly required.

- CEB4000 Premium Two-Tier Casket Display System

HEAVY-DUTY CASSET DISPLAY SYSTEM

Design features an angled top tier support to help clients get a better view of both the casket's exterior and interior. Molded from heavy-duty tubular steel, this system is ideal for your display room. Bottom tier accepts caskets up to 25" tall. Top tier and dolly easily support up to 300 lbs. Four 3" heavy-duty ball-bearing wheels are ideal for hard-surface floors or commercial carpet. Rolls in and out effortlessly. Available in black or almond color powder-coated finishes. Minimal assembly required.

- CEB2000/2500 Heavy-Duty Casket Display System



LIGHTWEIGHT CASSET DISPLAY RACK

Show off the interior of both caskets with this casket display rack. Made of sturdy welded steel tubing. Knocks down easily for storage or shipment. Minimal assembly required.

- B6000 Two-Casket Display System
34"W x 48"L x 54"H



"NEARLY INVISIBLE" CASSET PEDESTALS

Show off the casket, not the supporting bier, with these hexagonal clear Plexiglas® pedestals. Fitting in with virtually any decor, they almost make the casket look like it's floating on air. These durable, sturdy pedestals won't collapse or tip while the casket is being transferred. For easy storage and handling, the pedestals slip inside one another. Each hexagonal pedestal is 22" high — ideal for merchandising the premium details of your finest caskets.

- CE 6950 "Nearly Invisible" Casket Pedestals

Commemorative Displays

FRATERNAL EMBLEM DISPLAY STAND

A wonderful goodwill-builder. Funeral Directors are called upon time and time again to display the Emblems of various organizations. This display stand is crafted in a beautiful antique white frame with gold highlights. Interior is finished in off-white with illumination from top. The emblems are all cast construction with antique bronze finish. The stand is adjustable to a height of 8 feet. The emblem display itself measures 17" x 17" square and is 3" deep. Unit is complete with stand and any one emblem.

CC478 Display stand with your choice of any one emblem



Emblem Selection

- CC479E-1 Sacred Heart Emblem
- CC479E-2 Eastern Star Emblem
- CC479E-3 Moose Emblem
- CC479E-4 Praying Hands
- CC479E-5 Shriners Emblem
- CC479E-6 Rotary Emblem
- CC479E-7 Star of David
- CC479E-8 Madonna Emblem
- CC479E-9 Elks Emblem
- CC479E-11 Odd Fellows Emblem
- CC479E-13 Filigree Cross (not shown)
- CC479E-14 Masonic Emblem (shown in above box)

RUSSIAN ORTHODOX CRUCIFIX

Cross made from solid walnut. Measures 36" x 20". Metal corpora in your choice of antique bronze or brass finish. IHUI insignia in matching finish. Adjustable tripod stand included. Also available crucifix-only, with mounting bracket (no stand).

CC 476 Russian Orthodox Crucifix



GREEK ORTHODOX CRUCIFIX

Authentic Greek Orthodox Crucifix is made from solid walnut. INBI sign and corpora in antique bronze or brass finish. Complete with adjustable tripod stand. Measures 34" x 20". Also available crucifix-only, with mounting bracket (no stand).

CC 477 Greek Orthodox Crucifix



MASONIC EMBLEM ON ADJUSTABLE DISPLAY STAND

This solid wood Emblem is finished in Rich Walnut Stain and displays behind casket. Top height adjustable from 38" to 86", overall size: 21"W x 26" Tall.

CC475 Masonic Emblem on Adjustable Display Stand

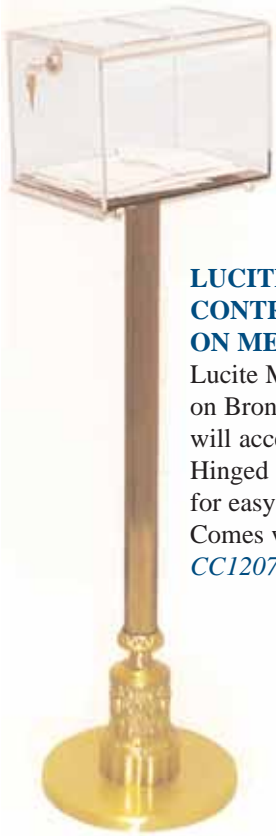


PERPETUAL MASS CARD HOLDER

Now you can give proper display to the large Perpetual Mass cards in a small space. Comes with 12 spring-type hand clips. Brass finish on a 10" base. UPS shippable.

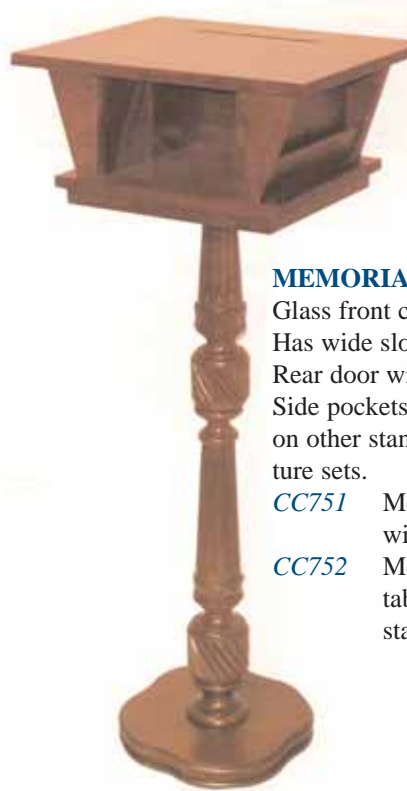
CC559 Perpetual Mass Card Holder

Contribution Boxes



LUCITE MEMORIAL CONTRIBUTION BOX ON METAL STAND

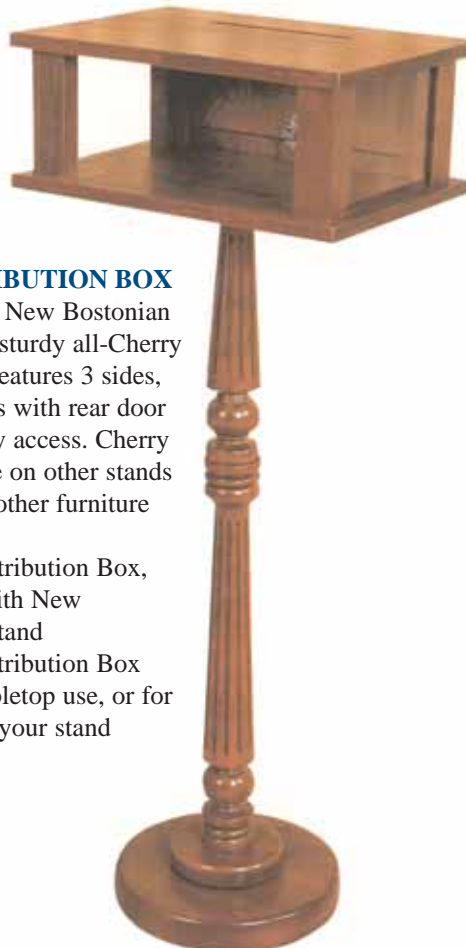
Lucite Memorial contribution box on Bronze stand. Wide slot on top will accept money envelopes. Hinged side opens when unlocked for easy removal of contents. Comes with lock and key.
CC12070/2380 Contribution Box on Bronze stand



MEMORIAL CONTRIBUTION BOX

Glass front contribution box on Versailles stand. Has wide slot on top to accept money envelopes. Rear door with lock and key for easy access. Side pockets to store envelopes. Also available on other stands to match any of our other furniture sets.

- CC751** Memorial contribution box, complete with Versailles stand
- CC752** Memorial contribution box only, for tabletop use, or for adapting to your stand



CHERRY CONTRIBUTION BOX

Contribution Box on New Bostonian stand complete with sturdy all-Cherry construction. Stand features 3 sides, see-through Plexiglas with rear door lock and key for easy access. Cherry finish. Also available on other stands to match any of our other furniture sets.

- CC951** Cherry Contribution Box, complete with New Bostonian stand
- CC952** Cherry Contribution Box only, for tabletop use, or for adapting to your stand

CLEAR LUCITE MEMORIAL CONTRIBUTION BOX

CC2279
 Lucite Memorial contribution box with lock and key. Slot on top will take large envelopes containing money contributions. Bottom slides out when unlocked for easy removal of contents. Available with or without cross (please specify). Cross version shown.



CLEAR LUCITE MEMORIAL CONTRIBUTION BOX

CC2380
 Clear Lucite Memorial contribution box with wide slot at top to accept money envelopes. Has lock and key. May be mounted on wall or placed on table. Wide slot on top will accept large envelopes containing money contributions. Hinged side opens when unlocked for easy removal of contents. Comes with lock and key.



Lecterns

The Grand Rapids Lecterns – now with new faces. Your choice of five modifications on the ever-popular lectern. made from hardwood and finished in warm walnut. Tiered base, 13 1/2" square, tapered center post with 22 1/2" xx 16" writing surface.



CC485GR

Metal reflector shade, Antique Bronze or Brass finish (*please specify*).



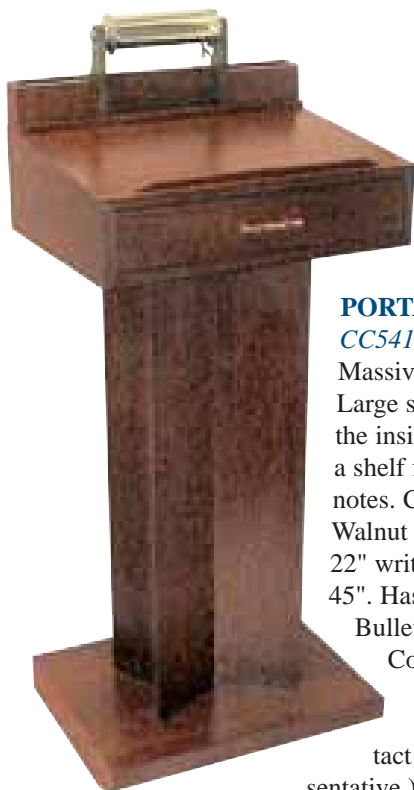
CC486GR

Wood card pockets w/metal reflector shade. Area for announcement board. *Announcement board extra (please specify).*



CC487GR

Carved wood, decorative reflector shade.



PORTABLE PULPIT

CC541

Massive-looking, yet light in weight. Large storage drawer is finished on the inside, and is removable to create a shelf for ministers' books and notes. Concealed wire light fixture. Walnut finish used throughout. 17" x 22" writing surface. Overall height is 45". Has side pockets for cards.

Bulletin board available (extra).

Comes with concealed wheels for portability. (Other wood finishes available — contact your Church & Chapel representative.)



CC489GR

Same as CC486GR, except has handy storage area to hold books, etc.



CC488GR

Same as CC485GR, except has handy storage area to hold books, etc.

Register Stand



CC2350

Available in Antique Bronze or Chrome Plate finish (*please specify*)



CC522

Available in Antique Bronze or Chrome Plate finish (*please specify*)

CC544

Same as above with 4 posts in Bronze or Chrome Plate finish (*please specify*)



CC625

Available in Brass, Antique Bronze or Chrome Plate finish (*please specify*)



CC725

Available in Antique Bronze or Chrome Plate finish (*please specify*)

CC725NC

Same as above without Cabinet Top.



CC101

Available in Antique Bronze or Chrome Plate finish (*please specify*)



CC100

Available in Antique Bronze or Chrome Plate finish (*please specify*)



CC2000

Available in Brass, Antique Bronze or Chrome Plate finish (*please specify*)



CC595

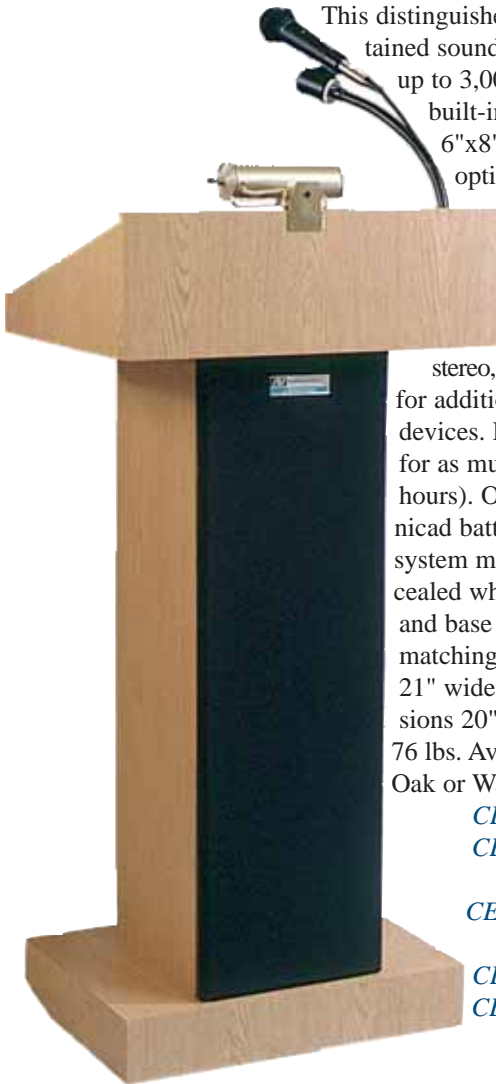
Available in Antique Bronze or Chrome Plate finish (*please specify*)

Sound Systems

PORTABLE LECTERN WITH SOUND SYSTEM

This distinguished pulpit is also a complete, self-contained sound system that can easily cover audiences up to 3,000 or rooms up to 20,000 sq. ft. The built-in sound column contains two IJI Jensen 6"x8" speakers, and has room for an additional optional speaker system. A professional-style microphone is mounted on an adjustable flexible-rod microphone holder, or can be unmounted and used with the 15-ft. cable (supplied). Also included is an auxiliary input for a tuner, stereo, tape recorder, etc. and three extra outputs for additional speakers, a tape recorder or other devices. Powered by ten D-sized alkaline batteries for as much as a full year under typical use (200 hours). Optionally, may run off rechargeable nicad battery pack or AC adapter. This lightweight system moves easily from room to room on concealed wheels. All-wood construction, with table and base covered with easy-care melamine, and matching vinyl-finished column. Base dimensions 21" wide x 15" deep. Reading table dimensions 20" wide x 13" deep. Weight (with batteries) 76 lbs. Available in Mahogany, Light Oak, Medium Oak or Walnut finish (*please specify*).

- CE S-500** Lectern with Sound System
- CE S-1465** Optional Nicad Battery Pack
- CE S-1460** Optional AC Adapter/Recharger
- CE S-1100** Optional Reading Lamp
- CE S-1201** Additional Speaker System



TABLETOP LECTERN WITH SOUND SYSTEM

Attractive and easy to move and set up, this lectern's built-in speaker reaches audiences up to 1,000 or covers a 10,000 sq. ft. room. Can be set on any tabletop, or (as shown) on optional Media Cart Base. Runs up to 200 hours on 10 D-sized alkaline batteries; optional rechargeable battery pack and AC adapter also available. Oak or Walnut easy-care finish (*please specify*).

- CE S-250** Table-top Lectern
- CE S-260** Media Cart Base
- CE S-1465** Optional Nicad Battery Pack
- CE S-1460** Optional AC Adapter/Recharger



LIGHTWEIGHT PORTABLE PODIUM

Rugged compact system sets up quickly — opens into two pieces — tabletop lectern and separate external speaker. Provides true stereo sound that can reach up to 1,500 people, using two 6"x8" IJI Jensen speakers. Optionally available with CD player and tape player for background music during services. Operates off of 10 D-sized alkaline batteries, or same rechargeable battery pack or AC adapter as above.

- CE S-122A** Basic Portable Podium
- CE S-132A** Portable Podium with CD Player & Tape Player



FOLDING TABLETOP SOUND SYSTEM

Similar to above, but folds compactly for extra-easy portability. Optional carrying case with wheels available. Oak or Walnut finish (*please specify*).

- CE S-270** Folding Sound System
- CE S-1900** Wheeled Carrying Case



Folds to a compact 5"x17"x22".

PORTABLE AUDIO SYSTEM

Lightweight and compact, this sound system measures only 10" high x 13" long x 3/2" thick, yet it boasts a full 50-watt multimedia stereo amplifier and a 6" x 8" IJI Jensen speaker. Features 3 microphone inputs, up to four speaker outputs, and a line-in for CD or tape player for background music. Operates off of 10 D-sized alkaline batteries, or same rechargeable battery pack or AC adapter as other units on this page. Available in standard or wireless models.

- CE S-222W** Wireless Audio System
- CE S-222N** Standard Audio System
- CE S-1600** Wireless Lapel Microphone kit (converts all sound systems to wireless)



Wireless microphone kit

Wall Register Desks



DELUXE REGISTER DESK

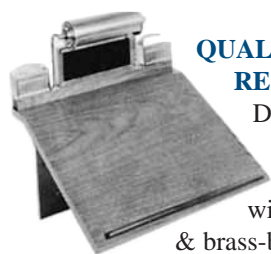
Combination of wood-grain Formica and the finest furniture wood add up to a distinguished, sturdy wall desk.

Bright brass side pockets for Mass cards blend

with the brass-plated reflector lamp.

Large 15" x 21" writing board folds flat when not in use. Comes with bulletin board. Packed with toggle bolts ready to install. Your choice of Walnut or Maple Fruitwood (*please specify*).

CC225 Deluxe Register Desk



QUALITY WALL REGISTER DESK

Durable wood-grain Formica writing surface measures

15" x 21". Available with

with brass-plated card pockets & brass-bound message board.

Features brass-plated reflector with hidden wire. Writing board folds flat when not in use. Packed with toggle bolts ready to install. Your choice of Walnut or Maple Fruitwood finish. (*please specify*).

CC325 Quality Wall Register Desk

CC326 As above, without cast card pockets

CC285 8" x 4" message board



ECONOMY REGISTER DESK

The simple styling enhanced with the all-

wood-grain Formica material and bright

brass reflector make

the Economy Register Desk

look more expensive than it really is. The large 15" x 21" writing board folds flat when not in use. Packed with toggle bolts ready to install. Your choice of Walnut or Maple Fruitwood finish. (*please specify*).

CC250 Economy Register Desk



MODERN REGISTER DESK

Another choice register desk with all-wood-grain Formica

material. Highlighted by 5/8"

tubing and reflector lamp in Brass, Antique

Bronze or Chrome finish.

Your choice of Walnut or Maple Fruitwood wood-grain finish. (*Please specify both lamp and wood grain finishes*).

CC260 Modern Register Desk

CB200-B Pen set Black w/Brass Holder & Chain



RECESSED WALL REGISTER

CC362 - CC364

Made of Hardwood Maple. Folds to only 3/4" when not in use. Can be recessed in wall to a mere 3/4". Overall size is 23 1/2" wide x 20" high. If recessed into wall, rough opening should be cut to 19 1/2" wide by 16" high by 2 1/4" deep. Satin Brass fold-down swivel light plugs directly into concealed electrical outlet

box with 1/2" knockouts. Writing surface is 18 1/2" wide by 14 3/4" deep. Comes in Walnut finish, unfinished, or primed ready-to-paint.

CC362 Recessed Wall Register, unfinished

CC363 Recessed Wall Register, primed, ready for painting

CC364 Recessed Wall Register, Walnut finish

CC286 Brass-framed Bulletin Board, 8 3/4" x 3 3/4", Black felt background

CB200-B Black plastic pen with Brass holder and chain



When not in use, register folds into wall for a clean look



DIPLOMAT WALL REGISTER

Maple Wood with writing surface in matching

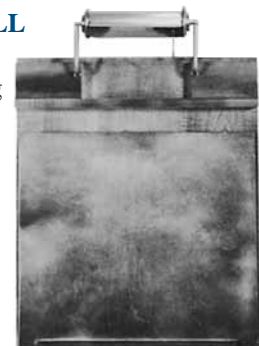
Formica. Complete with card pockets. Antique

Brass reflector.

Overall size is 28 1/2" H x 20" W x 3 3/4" D when closed. Writing board measures 19" W x 17 1/2" deep.

CC270 Diplomat wall register

CC287 Optional slip-on grooved board



Register folds flat when not in use.



CLASSIC REGISTER PEN SET

Attractive register pen with chain, in Gold. Pressure-sensitive mounting base.

CC103 Classic Gold Pen with Chain

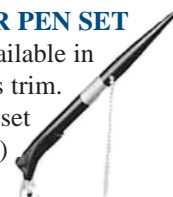
CC 1030 Refills (set of six)

ECONOMY REGISTER PEN SET

Plastic pen and holder with chain attached. Available in Black with Brass trim.

CB200-B Economy pen set

CB211 refills (set of six)



Replacement Lamp Shades



CB 282
13 1/2" diameter
9 3/4" high
2 3/4" shank



CB 11
12" diameter
(no Brass band)
2 3/4" shank



CBD 5
13 1/2" diameter
2 3/4" shank



CB 91
16" diameter
2 3/4" shank



CB 145
16" diameter
(no Brass band)
2 3/4" shank



CB 75
16" diameter
2 3/4" shank



CB 11047
11" diameter
3" shank



CB 11056
8 1/2" diameter at top
12 1/2" high
3" shank

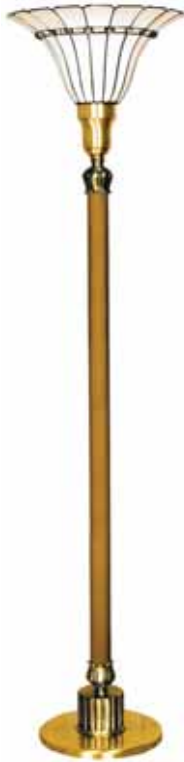


CB 231
11" diameter
at widest point
4" shank

Lamps

CC 8000

Features CB52 Tiffany style torchiere lamp shade. All metal lamp in Antique Bronze finish.



CC 12070

Features CBD-5 glass shade. Specify Antique Bronze, Brass or Chrome finish.



CC 200KC

Features CB9234 glass shade. Specify Antique Bronze, Brass or Chrome finish.



CC X-1

Features CBD-5 glass shade. Specify Antique Bronze, Brass or Chrome finish.



OTHER FURNITURE



CC 402

Features CB231 glass shade. Specify Antique Bronze, Brass or Chrome finish.



CC 421

Features CB-11 glass shade. Specify Antique Bronze, Brass or Chrome finish.



CC 9000

Features CB10083 etched glass shade. Specify Antique Bronze, Brass or Chrome finish.



CC 9872

Features CB11047 glass shade. Specify Antique Bronze, Brass or Chrome finish.

Comp-Directory System

Create and print directory announcements on your computer, then easily and quickly display them with dignity and elegance.



pages slip in easily

Available in a wide variety of wall-mounted and free-standing sizes, for full letter-sized pages and half pages. See the complete range of available frame styles and background colors on page 41. Custom sizes, colors and frames also available.



DUAL-PEDESTAL DIRECTORY

With room for six listings, each on a half-sheet of standard 8½" x 11" paper, this deluxe stand is at home in your busiest locations. Exterior dimensions are 30" wide x 20" high, mounted on a double pedestal for a total height of 60". Choose from background mat colors and frame styles (Frame Set A) on page 41.



SINGLE-PEDESTAL DIRECTORY

with three inner panels
Multiple announcements are easy on this versatile stand. Shown with three inner panels using half-page computer-generated announcements. Frame is 15" wide x 20" high on a contemporary-styled pedestal, for an overall height of 65". Inner panels are 12" wide and 5½" high, allowing half-page announcements to slip in or out easily, for quick directory changes. Choose from background mat colors and frame styles (Frame Set A) on page 41.



SINGLE LISTING PEDESTAL DIRECTORY

Available with an open face and tamper-resistant cover, & featuring your computer-generated announcements. New 8½" x 11" pages are easy to insert from an opening on the top of the frame. Frame size is 12" wide x 9½" high. Including stand, overall height is 46". Choose from background mat colors & frame styles (Frame Set B) on page 41.

- AA 860-8 Antique Bronze stand with open face Walnut frame
- AA 860-9 Chrome stand with open face Chrome frame
- AA 860-10 Brass stand with open face Brass frame

DIRECTORIES

- AA 8506 SM-8L Antique Bronze stand with open face Walnut frame
- AA 8506 SM-9L Chrome stand with open face Chrome frame
- AA 8506 SM-10L Brass stand with open face Brass frame
- AA 8506 SM BO Board-only (without pedestal)

- AA 8413/421-8 Antique Bronze stand with open face Walnut frame
- AA 8413/421-9 Chrome stand with open face Chrome frame
- AA 8413/421-10 Brass stand with open face Brass frame
- AA 8800 LIGHT Small optional light with one bulb

FOUR-LISTING DUAL PEDESTAL DIRECTORY

With room for four listings, each on a full sheet of 8½" x 11" paper, this deluxe stand is a cordial welcome for visitors to your home. Exterior dimensions are 30" W x 28"H, mounted on a double pedestal for an overall height of 68". Choose from background mat colors and frame styles (Frame Set A) on page 41.

- AA 8504-LG-10 Brass stand and frame for four 8½" x 11" announcements
 - AA 8504-LG-8 Antique Bronze stand and Walnut frame for four 8½" x 11" announcements
- Also available for two announcements (not shown):
- AA 8502-LG-10 Brass stand and frame for two 8½" x 11" announcements
 - AA 8502-LG-8 Antique Bronze stand and frame for two 8½" x 11" announcements
 - AA 8000 LIGHT Large optional light with two bulbs



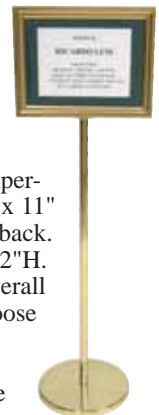
BACK-OPENING PEDESTAL DIRECTORY

Loads from back. Fixed with tamper-resistant acrylic cover. Fresh 8½" x 11" pages are easy to insert from the back.

Frame is 15"W x 12"H. Including stand, overall height is 48½". Choose from background mat colors and frame styles (Frame Set B) on page 41. Also available sized for vertical legal-sized paper (specify model 877).

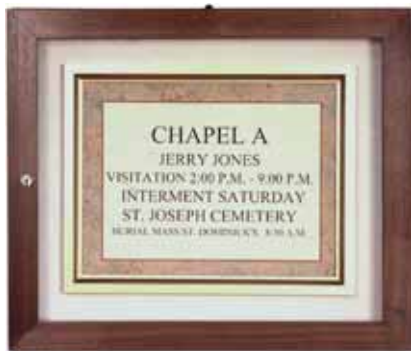
Opens from back to change messages

- AA 866-8 Antique Bronze Stand with Walnut frame
- AA 866-9 Chrome Stand with Chrome frame
- AA 866-10 Brass Stand with Brass frame



Comp-Directory System

AA8421LG-20



SINGLE PANEL DIRECTORIES

One panel with magnetic closure door frame and shatter-resistant acrylic window. Overall size is 19" wide and 16½" high, accepts one standard 8 ½" x 11" sheet. Your choice of stock background and frame style from Frame Set C (see page 41).

<u>Item Number</u>	<u>Frame</u>
AA8181 LG	Antique White
AA8421 LG-20	Walnut
AA8371 LG-10	Brass
AA8371 LG-9	Chrome
AA8000-L	Optional lock & key

Also available without door or acrylic window

<u>Item Number</u>	<u>Frame</u>
AA841W1 LG	Walnut
AA841B1 LG	Brass
AA840C1 LG	Chrome

TOP-LOADING SINGLE PANEL WITHOUT BORDER

Similar to Single Listing Pedestal Directory on page

38, but for wall mounting (no pedestal). Accepts a full sheet in a small frame size. Choose from frame styles (Frame Set B) on page 41.



<u>Item Number</u>	<u>Frame</u>
AA 860BO-20	Walnut
AA 860BO-10	Brass
AA 860BO-09	Chrome

Other Open-Frame Wall Models (without door) not shown

Choose from Frame Set A, page 41

# Panels	Paper Size	Dimensions	Walnut Frame	Brass Frame	Chrome Frame
Three	Full Sheet	22" x 40"	AA841W3 LG	AA841B3 LG	AA840C3 LG
Three	Half Sheet	15" x 20"	AA841W3 SM	AA841B3 SM	AA840C3 SM
Four	Half Sheet	18" x 25"	AA841W4 SM	AA841B4 SM	AA840C4 SM
Six	Half Sheet	22" x 40"	AA841W6 SM	AA841B6 SM	AA840C6 SM
Six	Half Sheet	30" x 20"	AA8506SMBO-20	AA8506SMBO-10	AA8506SMBO-09

Wall Directories

TWO-PANEL DIRECTORIES

Two panels with magnetic closure door frame and shatter-resistant acrylic window. Overall size is 18" wide and 24" high, accepts two standard 8 ½" x 11" sheets. Your choice of stock background and frame style from Frame Set C (see page 41).

<u>Item #</u>	<u>Frame</u>
AA8182 LG	Antique White
AA8422 LG-20	Walnut
AA8372 LG-10	Brass
AA8372 LG-9	Chrome
AA8000-L	Optional Lock & key

Also available without door or acrylic window

<u>Item Number</u>	<u>Frame</u>
AA841W2 LG	Walnut
AA841B2 LG	Brass
AA840C2 LG	Chrome

AA8182LG



AA8374LG-10



FOUR-PANEL DIRECTORIES

Four panels with magnetic closure door frame and shatter-resistant acrylic window. Overall size is 30" wide and 28" high, accepts four standard 8 ½" x 11" sheets. Your choice of frame style (Set C) and mat background (see page 41).

<u>Item Number</u>	<u>Frame</u>
AA8184 LG	Antique White
AA8424 LG-20	Walnut
AA8374 LG-10	Brass
AA8374 LG-9	Chrome
AA8000-L	Optional Lock & key

Also available without door or acrylic window

<u>Item Number</u>	<u>Frame</u>
AA841W4 LG	Walnut
AA841B4 LG	Brass
AA840C4 LG	Chrome



BACK-OPENING SINGLE PANEL DIRECTORY

Wall-mounted Comp-Directories work well over any of our wall registers (model CC260, above, shown — see page 35). This model displays a single sheet with a colorful mat, and loads from back — similar to back-opening Pedestal Directory on page 38, but for wall mounting (no pedestal). Choose frame style from Frame Set B, page 41.

<u>Item Number</u>	<u>Frame</u>
AA866BO-20	Walnut
AA866BO-10	Brass
AA866BO-09	Chrome

Comp-Directory System



SIX-PANEL DIRECTORY
Similar to Three-Panel Directory at right, but holds a full six 8½" x 11" announcements. Available open-frame with acrylic cover for each announcement, or with magnetic over door. 30" wide x 40" high. Choose background color and frame style (Frame Set C) from options on next page.

- AA8186LG Antique White frame
 - AA8426LG-20 Walnut frame
 - AA8376LG-10 Brass frame
 - AA8376LG-9 Chrome frame
 - AA8000-L Optional Lock & key
- also available without door or acrylic window
- AA841W6LG Walnut frame
 - AA841B6 LG Brass frame
 - AA840C6 LG Chrome



OUTDOOR PEDESTAL DIRECTORY/MARKER

Ideal for graveside services. Loads from top in weather-resistant acrylic carrier. Fits 8½" x 11" announcements. Frame measures 12" wide x 9½" high. Complete with foot peg for ease of mounting in ground. Available in Satin Aluminum or Brass frame. Black stake.

- AA897-L-9 Satin Aluminum frame with Black stake
- AA897-L-10 Brass frame with Black stake



SLIP-ON WALL DIRECTORIES

Removable from the wall for easy mounting of your computer-generated announcement on a half-sheet of standard 8½" x 11" paper. Just fold a standard letter-sized sheet in half and slip it into the Comp-Directory from the top. Available in Brass, Walnut or Chrome finish (choose from Frame Set B, next page), single or double face. Mounting brackets furnished. Single face board may be also used flush against the wall — hangers will be furnished — (please specify right-, left-, or flush-mount). Overall dimensions 12" wide x 5½" high.

- AA831C SF Single face Chrome frame
- AA831W SF Single face Walnut frame
- AA834B SF Single face Brass frame
- AA831C DF Double face Chrome frame
- AA831W DF Double face Walnut frame
- AA834B DF Double face Brass frame

THREE-PANEL DIRECTORY

Room for three 8½" x 11" announcements, can be placed anywhere on brass easel (sold separately). Available open frame with acrylic cover for each announcement, or with magnetic over door. 22" wide x 36" high; 62" high on optional easel. Choose background color and frame style (Frame Set C) from options on next page. (Please specify if you plan to use this board on an easel.)

With Magnetic Over-Door:

- AA8183LG Antique White Frame
- AA8423LG-20 Walnut Frame
- AA8373LG-10 Brass Frame

With Open Frame:

- AA841W3LG Walnut Frame
- AA841B3LG Brass Frame
- AA840C3LG Chrome Frame
- CC1195-10 Optional Brass Easel only



Directory Options

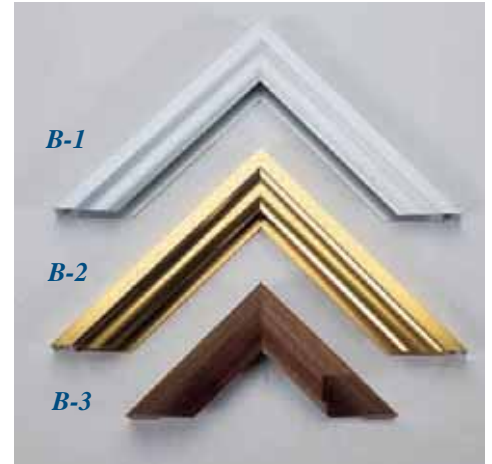
Available Mat Colors



Frame Styles

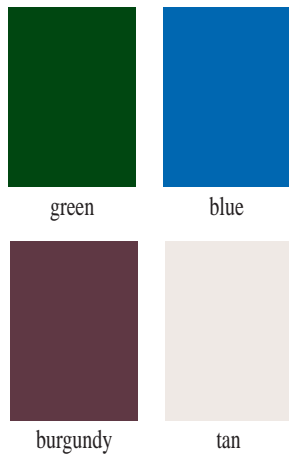


FRAME SET A
 A-1 Bright Chrome
 A-2 Solid Walnut
 A-3 Bright Brass



FRAME SET B
 B-1 Aluminum
 B-2 Bright Brass
 B-3 Solid Walnut

Available Magnetic Background Colors



FRAME SET C
 C-1 Aluminum
 C-2 Antique White
 C-3 Plain Solid Walnut
 C-4 Bright Brass



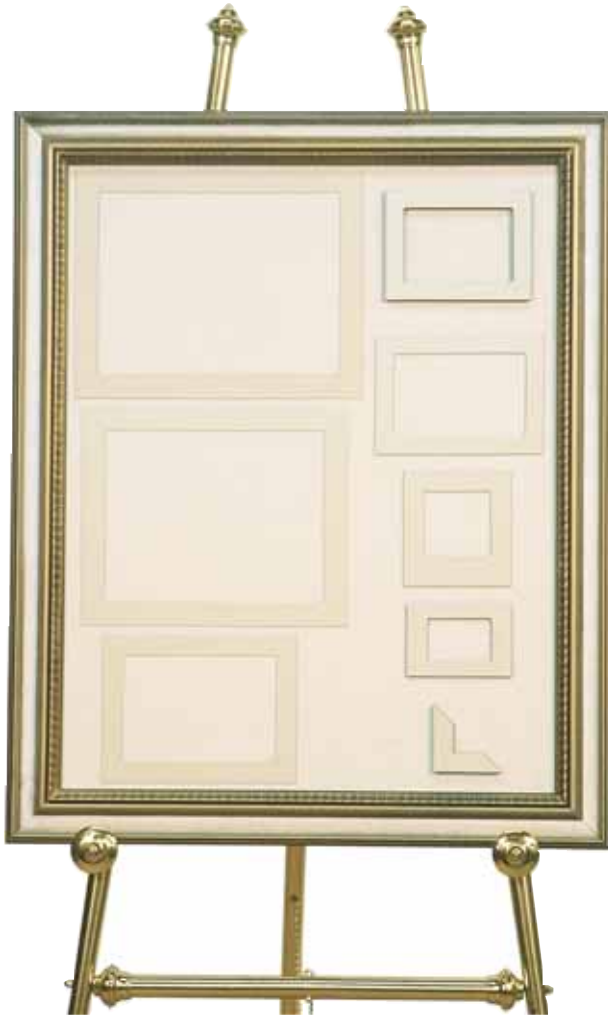
FRAME SET D
 D-1 Plain Solid Walnut
 D-2 Plain Solid Oak
 D-3 Bright Brass
 D-4 Antique White
 D-5 Reeded Dark
 D-6 Reeded Light
 D-7 Reeded Gold

DISPLAY PAPER

Heavyweight 8½" x 11" Ivory Paper is ideal for your announcements.

AA8067 Display Paper,
 100 Sheets

Celebration of Life Photo Galleries



Mats displayed on gallery with Antique White/Tan frame.

ADDITIONAL MAGNETIC MATS

Available in Green, Blue, Burgundy or Tan (see samples on page 41)..

CC1994 Complete set of 28 mats:

- (4) Wallet Size, (8) 3½" x 5", (2) Instant Picture,
- (2) 4" x 6", (1) 5" x 7", (1) 9½" x 7½", (1) 8" x 10",
- (1) 8½" x 11", (8) corners

CC94-09 corners for any size picture (set of four)



Light All-Wood Easel

All Brass Easel

Oak Brass Easel

Dark All-Wood Easel

DIRECTORIES

CELEBRATION OF LIFE OPTIONAL LIGHT

Highlight memorabilia with large, convenient 2-bulb light. Light is removable with Velcro® mount.

CC1300 2-bulb light for Celebration of Life Gallery



SEPARATE EASELS

CC1195-22 Oak/Brass easel

CC1195-10 All-Brass easel

CC1195-36 All-Wood easel (specify light or dark finish)

CC1196-10 Small Tabletop Brass easel (*not shown*)

Celebration of Life Photo Galleries

CELEBRATION OF LIFE MAGNETIC DISPLAY BOARDS

The ideal way to display photos, notes, and other memorabilia, to help families celebrate the life of the deceased. Magnetic mats quickly and securely hold items against display board.

Boards come in two sizes — large (34" x 44") or small (26" x 32"), and in your choice of background color (tan, green, blue or burgundy).

Also available in a wide variety of frame styles (choose from Frame Set D, page 41). Matching all-Brass, all-Wood (light or dark finish), or Oak tripod easel with Brass accents — available as part of a set with display board, or separately.

CC1391-10 Small 26" x 32" display board with mat package, your choice of frame & background color, and all-Brass easel

CC1391-36 Small 26" x 32" display board with mat package, your choice of frame & background color, and all-Wood easel

CC1391-22 Small 26" x 32" display board with mat package, your choice of frame & background color, and Oak/Brass easel

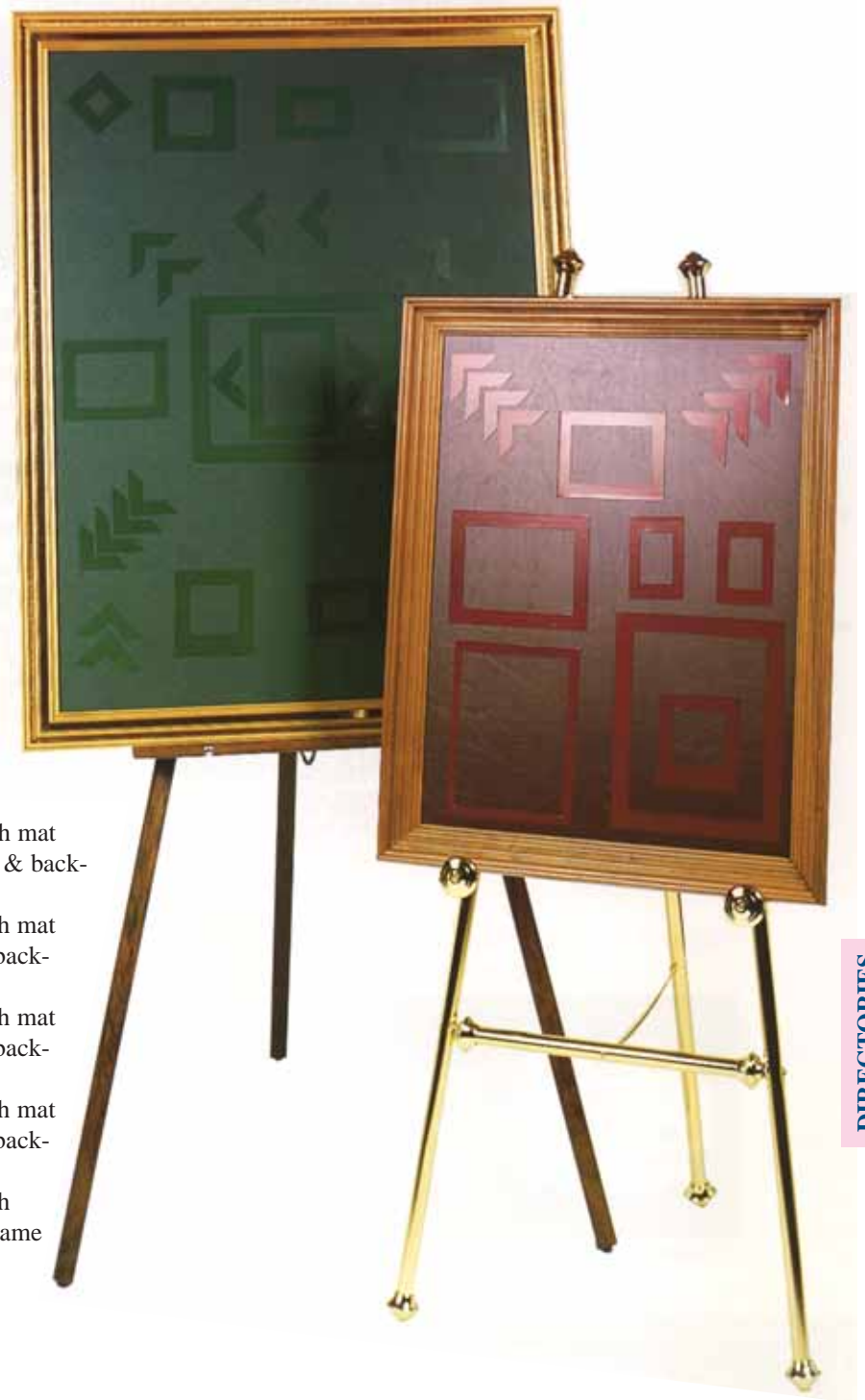
CC1393-00 Small 26" x 32" display board with mat package and your choice of frame & background color (*no easel*)

CC1390-10 Large 34" x 44" display board with mat package, your choice of frame & background color, and all-Brass easel

CC1390-36 Large 34" x 44" display board with mat package, your choice of frame & background color, and all-Wood easel

CC1390-22 Large 34" x 44" display board with mat package, your choice of frame & background color, and Oak/Brass easel

CC1392-00 Large 34" x 44" display board with mat package and your choice of frame & background color (*no easel*)



STORAGE CASES WITH HANDLES

Protects your Celebration of Life boards when not in use, and makes transportation of units convenient. (*not shown*)

CC1997-00 For large 34"x44" frame

CC1998-00 For small 26"x32" frame

CC1996-00 For Brass or Oak/Brass easel only

CC1999-00 For All-Wood easel only

Family Memories Display System

FAMILY MEMORIES DISPLAY SYSTEM

Make it easy for families to display their loved one's memories with the Family Memories Display System. A few of the advantages this system offers are:

- Distinguished looking frame that holds standard-sized 24" x 36" foam core board
- Glue Dot Dispenser lets families place photos & other memorabilia as they see fit.
- Glue dots can rub off foam board and back of photos cleanly
- Photos can be easily removed from solvent-free glue dots
- Easy dismantling allows families to take full board home with them, or return photos to individual family members
- System comes complete with materials for mounting up to 2,000 photos:
 - Glue dot dispenser and extra refill
 - Box of 250 traditional self-stick photo mounting corners
 - 25 foam core boards (24" x 36") to get started
 - Clip frame
 - Optional choice of hardwood or metal easel.



Glue Dot Dispenser for easy mounting and dismantling of memorabilia.



FAMILY MEMORIES SYSTEM

- CC 1280-00 Basic Display System (no easel)
- CC 1280-10 Display System with Brass Easel
- CC 1280-22 Display System with Brass/Oak Easel
- CC 1280-36 Display System with All-Wood Easel (your choice of light or dark finish)

SEPARATE EASELS

- CC 1195-22 Oak/Brass Easel
- CC 1195-10 All Brass Easel
- CC 1195-36 All Wood Easel (choice of finish)
- CC 1196-10 Small Table Top Brass Easel



Wide variety of metal and hardwood easels available.

ACCESSORIES

- CC 1282-25 24" x 36" Foam Core Boards (Quantity Discount Available on Boards)
- CC 1283 Glue Dot Dispenser
- CC 1284 Refill for Glue Dot Dispenser
- CC 1285 250 Photo Mounting Corners



Our exclusive Clip-Frame design makes adding or removing foam core displays quick and easy.

DIRECTORIES



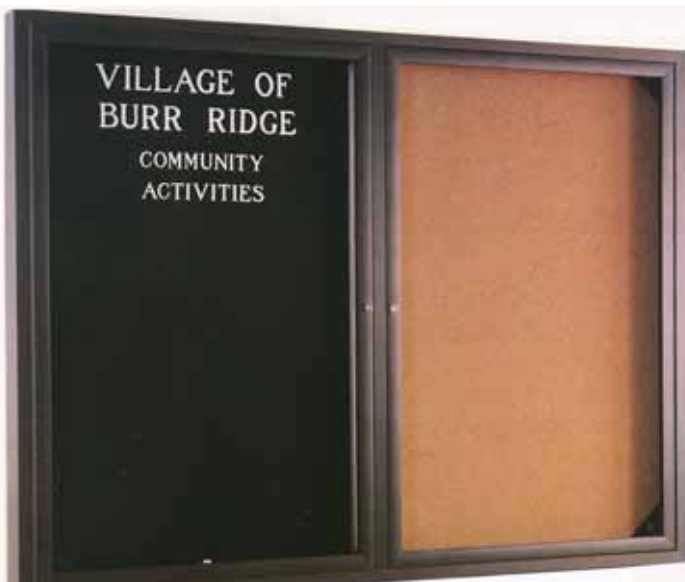
MAGNETIC SERVICE EMBLEMS

Emblems covering 24 different organizations. All emblems are 2" in diameter, multi-colored with foil background. Full sets include 1" x 7" "In Loving Memory" emblem. (minimum order 5 pieces for individual emblems)

- | | | | |
|---------------------------|--|---------|-----------------------------------|
| CC1300-95 | Emblems with 18"x16" display board (gold frame, green matting) | CC95-12 | EMT Emblem |
| CC95-SET | Full set of emblems (without display board) | CC95-13 | Fire Department Emblem |
| Individual Emblems | | CC95-14 | Jaycees Emblem |
| CC95-01 | U.S. Air Force Emblem | CC95-15 | Kiwanis Emblem |
| CC95-02 | U.S. Army Emblem | CC95-16 | Knights of Columbus Emblem |
| CC95-03 | U.S. Coast Guard Emblem | CC95-17 | Lions Emblem |
| CC95-04 | U.S. Marine Corps Emblem | CC95-18 | Masonic Emblem |
| CC95-05 | U.S. Navy Emblem | CC95-19 | Moose Emblem |
| CC95-06 | American Flag Emblem | CC95-20 | U.S. Postal Service Emblem |
| CC95-07 | American Legion Emblem | CC95-21 | Red Cross Emblem |
| CC95-08 | American Legion-Auxiliary Emblem | CC95-22 | Shriners Emblem |
| CC95-09 | Disabled American Veterans Emblem | CC95-23 | Unico Emblem |
| CC95-10 | Eastern Star Emblem | CC95-24 | VFW-Ladies' Auxiliary Emblem |
| CC95-11 | Elks Emblem | CC95-25 | "In Loving Memory" Emblem (1"x7") |

Outdoor/Indoor Bulletin Board Cabinets

BULLETIN BOARD WITH LOCKING PLEXIGLAS DOOR



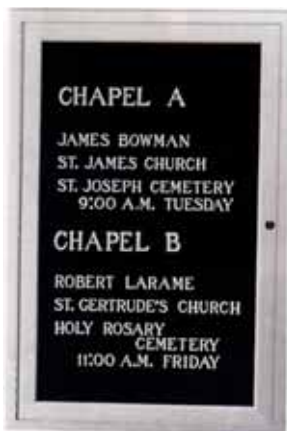
in 60" x 48" size with optional groove-board panel

Made in our own factory, these are some of the highest-quality, most durable bulletin board systems on the market. And with so many sizes, styles and options, you're sure to find the ideal board for every location in your facility. All feature a heavy-duty extruded Aluminum 3½" deep frame with set-in Plexiglas door, lock and key. You can opt for either a permanent corkboard back, or a removable groove-board letter panel that makes changing messages easy. You can even order a separate groove-board that inserts in front of the corkboard back, to instantly convert from one style to the other. Door features full-length hinge for many years of excellent service. Your choice of Satin Aluminum or Bronze finish. Available in models for indoor or outdoor (weatherproof) use.



Letter panels slip in and out quickly for convenient changes to your message.

AA43 Can also be made with custom permanent header panel, for display of your institution's name or any other message. Choose from stock sizes and models listed in the chart below. Custom sizes also available on request.



AA48, in 24" x 36" size

- AA44 Indoor-only model, in Satin Aluminum or Bronze finish (Bronze extra), with removable black Wool felt groove-board standard. Optional colored felt groove boards available in Dark Brown, Burgundy, Navy, Royal Blue, Medium Blue, Dark Green, Kelly Green, Olive, Gold, Rust, Red and Yellow.
- AA48 Outdoor model, in Satin Aluminum or Bronze finish (Bronze extra), with removable black vinyl groove-board.
- AA43 Indoor-only model, in Satin Aluminum or Bronze finish (Bronze extra), with corkboard back.
- AA38 Outdoor model, in Satin Aluminum or Bronze finish (Bronze extra), with corkboard back.

Sizes and Configurations

width x height	# of doors	groove board insert panel size
18" x 24"	1	15" x 21"
24" x 30"	1	21" x 28"
24" x 36"	1	21" x 34"
30" x 36"	1	27" x 34"
36" x 36"	1	33" x 34"
48" x 36"	2	21" x 34"
60" x 36"	2	27" x 34"
60" x 48"	2	27" x 46"
72" x 48"	3	21" x 44"

Note: To order any of these products, please specify: 1) item number (from list above); 2) size and number of doors (from chart at right); 3) finish (Satin Aluminum or Bronze); 4) optional header board wording, if any (and note whether you prefer white background with black letters or black background with white letters).

AA46 Optional Groove board panel to fit in corkboard models (specify size, indoor or outdoor use, and, for indoor boards, color)



OUTDOOR BULLETIN BOARD WITH ILLUMINATED HEADER PANEL

An exceptional combination of durability and beauty. Solid metal 5" deep frame in your choice of Satin Aluminum or Bronze finish. May be wall-mounted or mounted on optional 96" tall lawn standards. Removable Black vinyl-covered letterboard. Available in three sizes — 43"x 33", 47"x 36", and 60"x 42" (Custom sizes also available on request.). Ample 1½" and 2" letter assortment included at no charge. When ordering, specify permanent wording for header panel.

AA4200 Satin Aluminum finish AA4300 Bronze finish
Also available, Lawn Standards 2" x 2" x 96" (specify Satin Aluminum or Bronze finish)



Groove-Board Directories



15" X 20" ANNOUNCEMENT BOARD WITH ILLUMINATING LAMP

AA41/2500

100% pure wool felt grooved background. Triple-plated all-metal stand. Full 65" tall. Board has sufficient space to accommodate four service announcements. Also available without lamp.

AA41/2500-8

Antique Bronze finish stand with Walnut framed announcement

AA41/2500-9

Chrome finish stand with Chrome framed announcement

AA10-300

Recommended quantity 300
½" molded letters in free compartment box

Save valuable time in answering questions and directing visitors. Sizes vary, so you can choose the appropriate directory for every location throughout your facility. Directories are manufactured in our own plant, for exceptional quality control. Finest quality background is grooved every ¼" and covered with 100% pure wool black felt. Colored felt or fade-proof Koroseal also available at small additional charge. Colors available: Dark Brown, Burgundy, Navy, Royal Blue, Medium Blue, Dark Green, Kelly Green, Olive, Gold, Rust, Red and Yellow.

20" X 30" DELUXE ANNOUNCEMENT BOARD WITH ILLUMINATING LAMP

AA50

Tall, substantial stand and extra-large board area makes this directory ideal where multiple listings are needed. Triple-plated all-metal stand with heavy base and two 2" diameter posts. Overall height 72". Includes 18" reflector lamp with turn switch. Optional plexiglas front with letter panel removable from back (extra, please specify). Also available without lamp.

AA50-8

Antique Bronze finish stand with Walnut framed announcement

AA50-9

Chrome finish stand with Chrome framed announcement

AA50-10

Brass finish stand with Walnut framed announcement

AA10-300

Recommended quantity 300 - ¾" molded letters in free compartment box



DIRECTORIES

15" X 20" DELUXE ANNOUNCEMENT BOARD WITH ILLUMINATING LAMP

AA41/421

Similar to above, with more contemporary stand design. Also available without lamp.

AA41/421-8

Antique Bronze finish stand with Walnut framed announcement

AA41/421-9

Chrome finish stand with Chrome framed announcement

AA41/421-10

Brass finish stand with Walnut framed announcement

AA10-300

300 - ½" molded letters in free compartment box



INDIVIDUAL LAYOUT ROOM IDENTIFIER

AA60

Identify each chapel by placing this stand in front of each room entrance. 15"x12" directory on stand with sturdy base. Overall height 46". Free room identification (such as PARLOR A or ROOM B) in 1" letters (10 letters maximum).

AA60-8

Antique Bronze finish stand with Walnut framed announcement (optional double-face frame available, extra)

AA60-9

Chrome finish stand with Chrome framed announcement

AA60-10

Brass finish stand with Brass framed announcement

AA60-B0

Directory with wall hangers only; no stand Specify Brass, Chrome or Walnut frame

AA10-300

300 - ½" molded letters in free compartment box



20" X 30" SPECIAL DELUXE ANNOUNCEMENT BOARD

AA55

Similar to above, with modern all-Aluminum stand design, featuring two 1" square tubing & sturdy base. Also available without lamp.

AA55

Satin Aluminum finish stand with Satin Chrome framed announcement

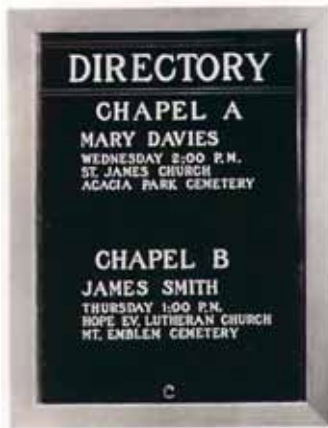
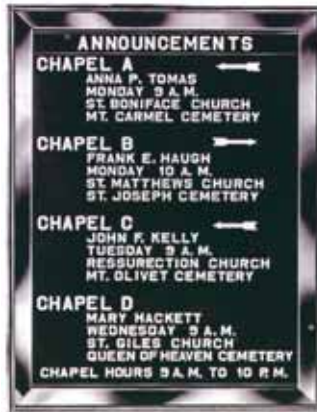
AA10-300

300 - ¾" molded letters in free compartment box

Groove-Board Directories

WALL-MOUNT DIRECTORIES

So many sizes and options! Same high-quality construction as stand directories on previous page, but in a wide variety of wall-mount forms. Each model available in the following sizes (please specify) : 15"x12", 15"x 20", 18"x 25", 18"x 35", 20"x 30", 25"x30", 28"x 40". Custom sizes also available. All sizes may be ordered with grooves running in either direction for horizontal or vertical mounting; if not specified, grooves will run along first listed dimension (width). Optional colored felt or fade-proof Koroseal backgrounds available (extra). Letter sets should be ordered separately.



- AA40C Chrome frame, open face
- AA41W Walnut frame, open face
- AA41B Brass frame, open face
- AA42C Chrome frame, glass front, removable back
- AA42W Walnut frame, glass front, removable back
- AA42B Brass frame, glass front, removable back
- AA47C Chrome frame, open face, front-removable letter panel (indoor use only)
- AA47W Walnut frame, open face, front-removable letter panel (indoor use only)

REPLACEMENT BULLETIN BOARD INSERTS

Renew the look of your present bulletin board frame with a new groove-board insert. Available in any size desired. Comes with black wool felt background (standard) or optional colored wool felt or fade-proof plastic Koroseal background (extra). Price based on total square inches. Available with or without metal binding. Minimum order required, see price list for details.

- AA45 Standard Black insert, no binding (slips into your frame)
- AA46 Standard Black insert, with metal binding (slips into your cabinet)

PORTABLE LETTER BOARD

The CP series features bright chrome framing surrounding a quality 20"x14" felt covered letter panel. Single pedestal is adjustable to maximum height of 66". Available with or without a Plexiglas front. Also available with colored felt or fade-proof Koroseal plastic background (extra charge).

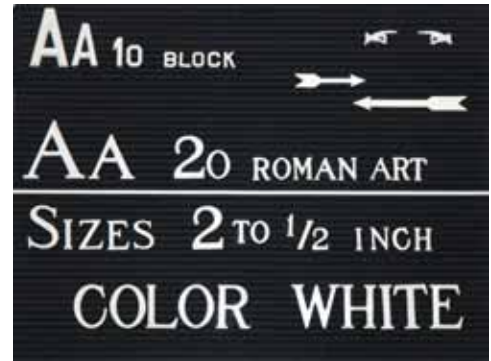
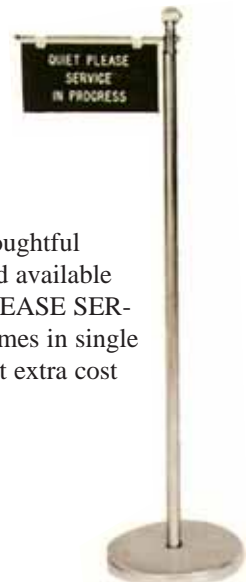
- CCP300 includes Plexiglas front
- CCP3 Open face



"QUIET PLEASE" SIGN STAND

Another convenience to help provide a more thoughtful service. Beautiful Brass or Bronze finished stand available with Walnut-Grained Formica sign. "QUIET PLEASE SERVICE IN PROGRESS" is standard warning. Comes in single face or double face. Special wording available at extra cost (add SW to Item Code Number when ordering).

- CC563-8 Antique Bronze Stand, single face
- CC563-8D Antique Bronze Stand, double face
- CC563-10 Brass Stand, single face
- CC563-10D Brass Stand, double face



LETTERS AND LETTER SETS

Letter sets consist of an appropriate assortment of 300 letters, in compartment storage box. All styles available in 1/2", 3/4", 1", 1 1/2" and 2" sizes. The following symbols can be included in 300 letter sets on special request only:

- Dash (—)
- Percent (%)
- Dollar (\$)
- Period (.)
- Comma (,)

AA10 Molded Gothic Block (White)

AA20 Roman Art (White)

Individual letters and special symbols also available separately, in multiples of 10, minimum order 100 letters total.

SPECIAL SYMBOLS AND ACCESSORIES

AA13 2 1/2" molded arrows

AA14 4" molded arrows

AA15 Underline strips, 1/8" face width, total length 20" (may be cut to size)



AA25

AA16 Pointing Hands

AA17 Cardboard Letter Storage box 13 1/2"x9 1/2"x1 1/2" (holds sizes up to 1")

AA18 Cardboard Letter Storage box 19 3/4"x13 1/2"x2 1/4" (holds sizes up to 2")

AA19 Cardboard Letter Storage box 24"x17 1/4"x1" (holds sizes up to 3")

AA25 Plastic Letter Storage box 18 1/2"x13"x3" (holds sizes up to 3")

Pascal Candles



PASCAL CANDLE TUBE CONVERSION KIT

These unique kits allow you to convert your candlesticks from traditional-style Sanctuary Lamps. Conversion kit permits easy installation or removal of Pascal tube. (Candlesticks and Pascal tubes sold separately.)

CC7200 Pascal Conversion Kit



STEARIC MOLDED CANDLES

Calvary Brand

CE55342-4 carton of 2 candles, 1 1/2" x 1 1/2"

CE55352-2 carton of 2 candles, 2 1/2" x 1 1/2"

CE55362-2 carton of 2 candles, 3 1/2" x 1 1/2"

PASCAL CANDLE TUBE

Features an interior spring tube which presents uniform height appearance. No dripping. Easily applied to any candlestick or candelabra.

Supplied with adapter hardware to replace existing candle socket.



Candles are easily inserted into the interior spring tube by lifting off the bronze burner. All tubes are supplied with bronze socket & burner.

Candle tubes supplied plain, or with optional symbols at left (extra, specify symbol A or B)

	tube size	candle size
CE2CT24	2 1/4" x 24"	1 1/2" x 16 1/2"
CE2CT36	2 1/4" x 36"	1 1/2" x 16 1/2"
CE3CT10	3" x 10 1/2"	1 1/2" x 5 1/2"
CE3CT24	3" x 24"	1 1/2" x 16 1/2"
CE3CT36	3" x 36"	1 1/2" x 16 1/2"
CE55342-4	1 1/2" x 16 1/2" Candles for above (2/pack)	
CE5031-6	1 1/2" x 9" Olivaxine Candles (18/case)	



Pascal Conversion Kit shown on New Bostonian candlestick with CE2CT24 Pascal tube with Symbol A attached

OTHER



SLIP-ON SIGNS

These versatile signs measure 12" x 4" and come in a variety of finishes. Non-warping black felt groove-board accommodates all size



letters. (Colored felt available at slight extra charge.) Free 1" letters to identify room (*specify letters*). For additional letters, see previous page. Specify mounting (flush, right or left) for single-face models.

- AA30 Walnut or Chrome Binding (*available single-face only*)
- AA31 Deluxe Walnut (*specify single-face or double-face*)
- AA33 Stainless Steel Binding (*specify single-face or double-face*)
- AA34 Brass Binding (*available single-face only*)

Mortuary Candles

REMEMBRANCE LITES

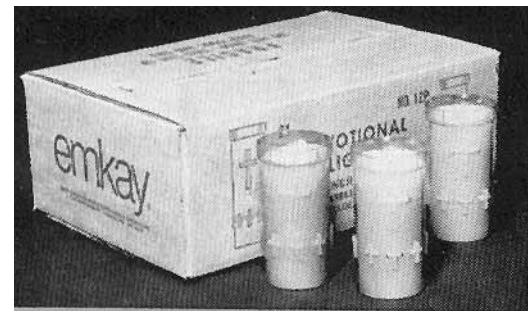


- CE1001**
Remembrance Lite Fixture with round centered ground spike and Latin cross finial
- CE1002**
Remembrance Lite Fixture with offset ground spike and Latin cross finial
- CE1003**
Remembrance Lite Fixture with self-standing base, wedge anchor and Latin cross finial (not shown)
- CE1004**
Same as CE1002 but with 3-bar cross finial
- CE30**
Replacement ruby cylinder for Remembrance Fixture
- CE-17**
Code #797 Outdoor Remembrance refill candles (24 per carton) 8" x 2½"



RUBY VIGIL GLASSES

CE1500
15 hour



MORTUARY CANDLES

Three sizes in one style have noncombustible, unbreakable lightweight plastic containers and are packed 24 or 48 to a case. Clear or ruby containers.

- | | | |
|-------------------|-----------------------|---------|
| CE9-P-24 | Clear plastic 4"x2½" | 24/case |
| CE9-P-48 | Clear plastic 4"x2½" | 48/case |
| CE12-P-24 | Clear plastic 5½"x2½" | 24/case |
| CE15-P-24 | Clear plastic 8"x2½" | 24/case |
| CE9-PR-24 | Ruby plastic 4"x2½" | 24/case |
| CE9-PR-48 | Ruby plastic 4"x2½" | 48/case |
| CE12-PR-24 | Ruby plastic 5½"x2½" | 24/case |
| CE15-PR-24 | Ruby plastic 8"x2½" | 24/case |



MORTUARY CANDLE IN GLASS

CE3-24
Crystal only,
24/case

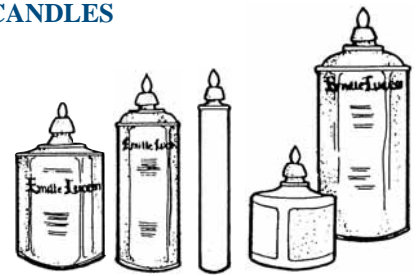


QUALITY VOTIVE LIGHTS

CE703
10 hour
CE701
15 hour

BEESWAX LIQUID PARAFFIN OIL CANDLES

- CF-90** 5¼"x2¼"
burns 90 hours
- CF-60** 5¼"x2¼"
burns 60 hours
- CF-30** 6¼"x1½"
burns 30 hours
- CF-65** 3¼"x2¼"
burns 65 hours
- CF-170** 7"x3⅞"
burns 170 hrs.



CF-90 CF-60 CF-30 CF-65 CF-170



CBFB-1
CBFB-2

CB513

CB512

CB840

CB521

CB520

CB518

CB336RB

CB520H

REPLACEMENT RUBY MORTUARY GLASSES

	description	top	height	bottom		description	top	height	bottom
CBFB-1	Flat closed bottom, flare top	5 ⅞"	8 ¾"	3 ⅝"	CB521	Round closed bottom, flare top	5 ⅞"	8 ¾"	3 ⅝"
CBFB-2	Flat 1¼" open bottom, flare top	5 ⅞"	8 ¾"	3 ⅝"	CB520	Round closed bottom, flare top	4 ⅞"	7 ¼"	3 ⅝"
CB513	Flat open bottom	3 ¼"	7"	3 ¼"	CB518	Open bottom, flare top	5 ⅞"	9 ¼"	4 ⅞"
CB512	Flat open bottom	3 ½"	9 ⅝"	3 ½"	CB336RB	Open bottom, Engraved Cross	4"	10"	4"
CB840	Flat open bottom	4"	8"	4"	CB520H	Open bottom, flare top	4 ⅞"	6 ⅝"	3 ⅝"

OTHER

Molded Columns and Stands

Ideal as decorative accents for your facility, these durable yet lightweight stands and columns are molded from a durable, lightweight polymer that won't crack, dent or break. Usable either indoors or outdoors, they're maintenance-free, easy to clean and are offered in White or Marble



Marble

White

ROMAN COLUMNS AND URNS

Typically furnished in white. For marble, add MB to product number.

- CE-P 624** Column 24" high, 7" diameter, 11¼" sq. cap
- CE-P 632** Column 32" high, 7" diameter, 11¼" sq. cap
- CE-P 640** Column 40" high, 7" diameter, 11¼" sq. cap
- CE-P 670** Column 70" high, 7" diameter, 11¼" sq. cap
- CE-P 911** Urn 11" high, 14" diameter 9" opening, 6" deep
- CE-P 913** Urn 13" high, 13" diameter 9" opening, 6" deep
- CE-P 914** Urn 14" high, 13" diameter 8" opening, 6" deep
- CE-P 919** Urn 19" high, 16" diameter 10" opening, 7" deep



CE P720

CE P740

CE P730

IONIC COLUMNS AND URNS

Typically furnished in white. For colors, add MB (marble) to product number.

- CE P 720** Column 19" high x 10½" diameter
- CE P 730** Column 30" high x 10½" diameter
- CE P 740** Column 38" high x 10½" diameter
- CE P 8206** 12" square cap, 5" high
- CE P 8207** 12" x 15" Doric cap, 5" high
- CE P 914** Urn, 14" tall, 13" diameter, 8" opening, 6" inside depth
- CE P 919** Urn, 19" tall, 16" diameter, 10" opening, 7" inside depth



CE P 914

CE P 911

CE P 913

CE P 919

CE P 640

CE P 632

CE P 624

CE P 670

CE P 349



FLORAL BASKET

48" Standing Floral Basket, wicker look. Typically finished in white, or marble finish, please specify MB after product name.

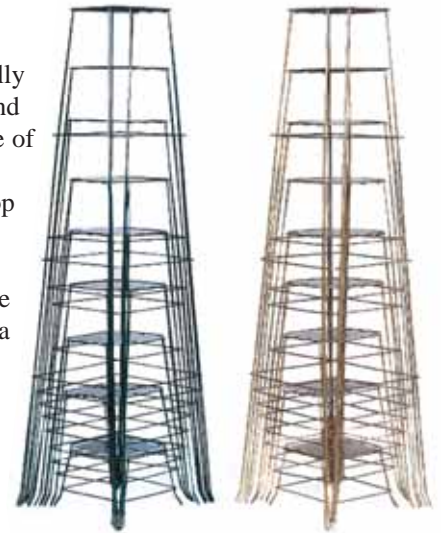
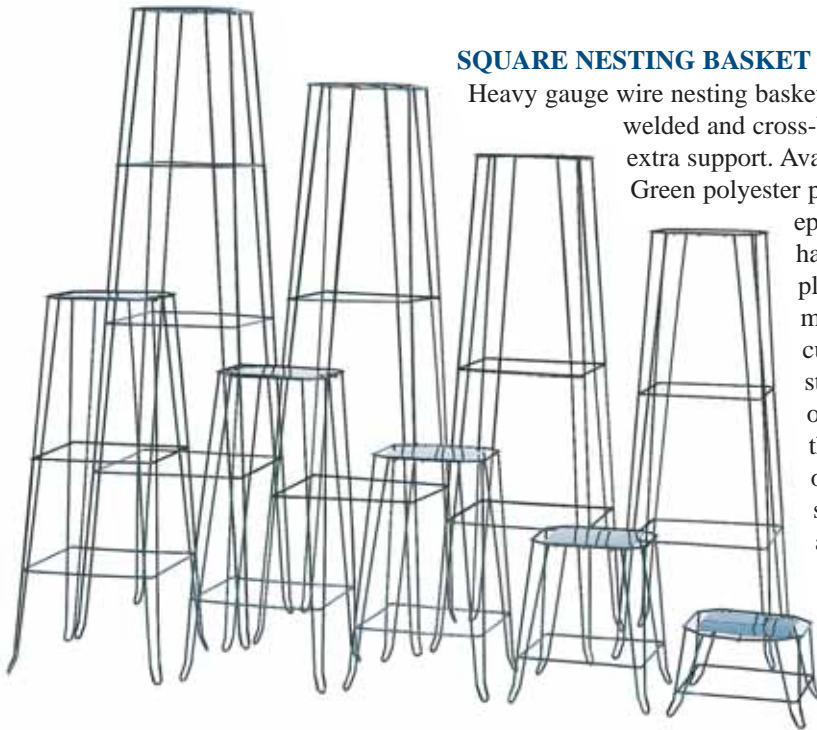
CE P 349

48" Floral Basket

Floral Display Systems

SQUARE NESTING BASKET STANDS

Heavy gauge wire nesting basket stands are electrically welded and cross-braced for rigidity and extra support. Available in your choice of Green polyester powder coat or Gold epoxy powder coat. Top has a flat metal steel plate welded to give more support. Legs are curved at feet for extra stability. Stands nest one into the next so they can be stored in only 16 inches of space. Nine sizes available — 7", 13", 19", 25", 31", 37", 43", 49", and 55" high.



- Set of nine-in-one
- Set of five smallest sizes
- Set of four largest sizes
- Individual Stand 7" high
- Individual Stand 13" high
- Individual Stand 19" high
- Individual Stand 25" high
- Individual Stand 31" high
- Individual Stand 37" high
- Individual Stand 43" high
- Individual Stand 49" high
- Individual Stand 55" high

<u>Green</u>	<u>Gold</u>
CB1001-9	CB1102-9
CB1001-5	CB1102-5
CB1001-4	CB1102-4
CB1001-7	CB1102-7
CB1001-13	CB1102-13
CB1001-19	CB1102-19
CB1001-25	CB1102-25
CB1001-31	CB1102-31
CB1001-37	CB1102-37
CB1001-43	CB1102-43
CB1001-49	CB1102-49
CB1001-55	CB1102-55

BRASS-PLATED ROUND BASKET STANDS

Similar to above, made of heavy-gauge Steel wire with round solid-steel top and durable electro-plated Brass finish. Seven sizes, from 8" to 32" high, nest in 15 square inches of space.



from 8" to 32" high, nest in 15 square inches of space.

- CB1304-7 Set of seven-in-one
- CB1304-5 Set of five smallest sizes
- CB1304-8 Individual Stand 8" high
- CB1304-12 Individual Stand 12" high
- CB1304-16 Individual Stand 16" high
- CB1304-20 Individual Stand 20" high
- CB1304-24 Individual Stand 24" high
- CB1304-28 Individual Stand 28" high
- CB1304-32 Individual Stand 32" high



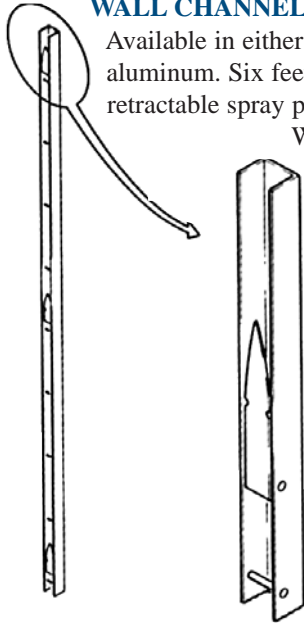
Floral Display Systems

WALL CHANNEL

Available in either Black or Gold anodized aluminum. Six feet long with three retractable spray points and nine shelf pins.

Will fit between paneling in Flower Rooms, Chapels or Slumber Rooms. Can also be fastened flush to wall; protrudes only 1/2" to 5/8". Optional 8" x 12" channel shelves also available.

- CE-6B** Wall Channel Rack, 6' long, Black
- CE-6G** Wall Channel Rack, 6' long, Gold
- CE-66** Channel Rack Shelves



TYPE O STAND

Display up to five baskets in just 22 inches of floor space. Available in two fixed sizes and two adjustable sizes.

- CE O-3** set including 42" to 73" stand with three 18" attachments
- CE O-4** set including 53" to 96" stand with four 18" attachments
- CE O-3ADJ** Stand with adjustable height 42" to 73"
- CE O-4ADJ** Stand with adjustable height 53" to 96"
- CE O-5-40** Fixed 40" height stand
- CE O-6-52** Fixed 52" height stand
- CE O-1-18** 18" Attachments
- CE XL-2513** Carrying Bag for *CEO-3* or *CEO-5*
- CE XL-2514** Carrying Bag for *CEO-4* or *CEO-6*



LADDER RACKS

The elegance and simplicity of this sturdy display rack allows you to use it in any setting, from casual to formal. Constructed of polished gold-anodized aluminum tubing with wood-grain finished shelves, this ladder rack is available in three sizes, and has an optional extension that quickly and easily adds additional display space.

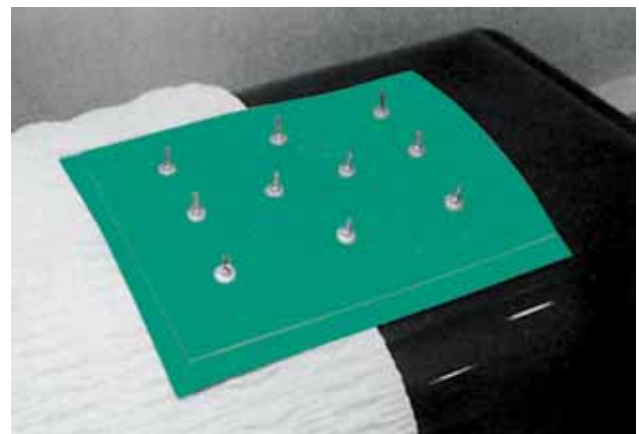
- CE XL-1251** 46" ladder with three shelves
- CE XL-1252** 63" ladder with three shelves & extension
- CE XL-1255** 75" ladder with three shelves & extension
- CE XL-1253** 22" extension with one shelf
- CE XL-1257** 8" x 12" shelf
- CE XL-1259** large 8" x 18" shelf
- CE XL-2625** carrying case for two 46" ladders and shelves
- CE XL-2627** carrying case for two 63" or 75" ladders and shelves



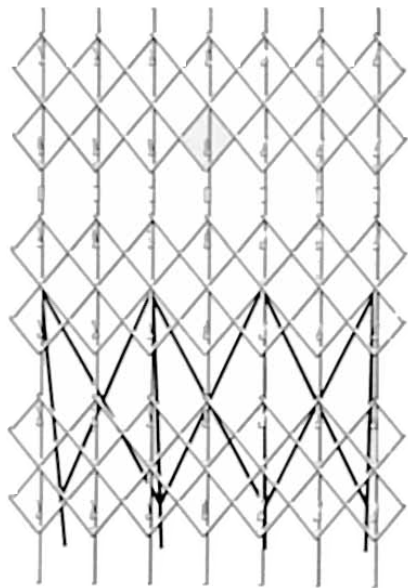
MAGNETIC CASKET SPRAY HOLDER

18" x 14" treaded rubber pad with three magnetic strips that secure pad to contour of casket. Chromium-plated spikes on top of pad hold floral spray firmly in place. Waffle pattern resists movement on wood or cloth caskets.

CE RJ1670



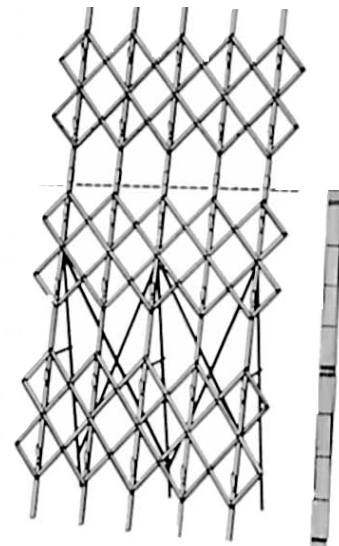
Floral Display Systems



ORIGINAL POPULAR A-RACKS

Available in three widths — 30", 50" and 70", each with optional 30" height extensions. Spray hooks hold floral pieces securely; spring conceals hook when not in use. Folds flat for easy storage.

- CE A-30* 62" high x 30" wide
- CE A-3-1* 30" high x 30" wide height extension
- CE A-50* 62" high x 50" wide
- CE A-5-1* 30" high x 50" wide height extension
- CE A-70* 62" high x 70" wide
- CE A-7-1* 30" high x 70" wide height extension
- CE A-CASE* carrying case for A Racks



TYPE D STANDS

Available in 2 adjustable height ranges. Four legs with rubber feet to protect floor surfaces. 8" and 12" diameter round heads are interchangeable.

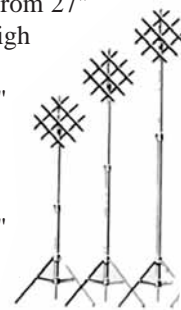
- CE XLD-3-8* adjusts from 24" to 38" high; 8" diameter head
- CE XLD-3-12* adjusts from 24" to 38" high; 12" diameter head
- CE XLD-4-8* adjusts from 36" to 64" high; 8" diameter head
- CE XLD-4-12* adjusts from 36" to 64" high; 12" diameter head
- CE XLD-66* set of three of each size (six total stands); 8" diameter heads
- CE XLD-77* set of three of each size (six total stands); 12" diameter heads
- CE2531 HDCC* carrying case for 6 stands



TYPE G ADJUSTABLE STANDS

Three different sizes. Accordion heads tilt to any angle. Holds baskets or spray. Rubber feet on legs. Folds for easy storage.

- CE G-1* adjusts from 27" to 44" high
- CE G-2* adjusts from 37" to 60" high
- CE G-3* adjusts from 47" to 74" high
- CE G-13* set of 2 of each size
- CE G-30* set of six 40" to 74" adjustable stands
- CE G-6* Carrying case for six stands



CASKET SPRAY FLORAL RACK

Expandable design permits floral display over full open caskets or 1/2 couch caskets. Rack is all-aluminum, Gold-anodized with 2 black vinyl-coated adjustable grips. Three large prongs hold spray with absolute security regardless of rack angle. Rack expands to a full 50" to hold the largest sprays. Folds to 4" for minimal storage.

- CB 1420-10* Open Casket Lid Spray Rack — Gold Anodized
- CB 1430-CASE* Carrying & Storage Case for Casket Spray Floral Rack



OTHER

Literature Racks and Card Holders

Make sure everyone interested has access to your educational or promotional brochures. Place these handy racks in your lobby, reception area, office, or wherever people congregate.



SINGLE TIER MULTIPLE-BROCHURE RACK

Same as multiple tier rack at right, but with a single tier to hold one

layer of brochures. 17 $\frac{3}{8}$ " W x 7 $\frac{3}{4}$ " H x 3 $\frac{1}{4}$ " D.

CC1781

Single Tier Multiple-Brochure Rack

SINGLE ITEM LITERATURE RACK

"Take One" embossed in black.

5 $\frac{1}{2}$ " W x 4" H x 3" D. Literature opening:
4 $\frac{3}{8}$ " W x 1 $\frac{1}{8}$ " D.

CC1783

Single Item Literature Rack



MULTIPLE TIER, MULTIPLE-BROCHURE RACKS

1" deep pockets hold just about any kind of literature. Clear Plexiglas face with smoke Plexiglas® sides. 17 $\frac{3}{8}$ " W x 8 $\frac{3}{4}$ " H x 4 $\frac{1}{2}$ " D.

CC1782

Two-Tier Multiple Rack

CC1782-3

Three-Tier Multiple Rack (not shown)

CC1782-4

Four-Tier Multiple Rack (not shown)

CLEAR CARD HOLDER

Plexiglas pocket
5" W x 3 $\frac{1}{2}$ " H x 1" D.

Comes with angle mount or flat mount
(please specify).

CC294

Clear Card Holder



MASS CARD HOLDER

Same as CC297 below left, with "Mass Cards" engraved at base. Flat mount only.

CC296

Mass Card Holder

MEMORIAL CARD HOLDER

Plexiglas pocket
6" W x 3 $\frac{1}{2}$ " H x 3" D.
Individual pockets are
5 $\frac{1}{2}$ " W x 1 $\frac{1}{2}$ " D.

"Memorial Cards"
engraved at base.
Flat mount only.

CC297

Memorial Card Holder



TWO POCKET RACK

8" W x 5" H x 2 $\frac{1}{2}$ " D.
Individual pockets are
4 $\frac{1}{4}$ " W x 1" D.

CC1784

Two Pocket Rack



METAL CARD POCKET

Available in Brass, Bronze or Chrome plating. Comes with suction cups or screws for mounting (please specify).
4 $\frac{7}{8}$ " W x 1 $\frac{1}{2}$ " D x 3" H.

CC2284 Cast Metal Card Pocket

Seating Signage



WOOD RESERVED SEAT SIGNS

The popular wood "reserved seat" sign is now back in production. Made from solid natural Walnut, with leaded ears covered in maroon corduroy that form-fit onto chairs or pews. Wording is on metal plate with Satin Aluminum lettering on black background. Three wordings to choose from:

- CC300 "Reserved"
- CC301 "Reserved Family"
- CC302 "Reserved Pallbearer"

ALL-ALUMINUM RESERVED SEAT SIGNS

Made from cast aluminum in natural polished chrome-like finish, with leaded ears covered in maroon corduroy that form-fit onto chairs or pews. Polished Aluminum lettering on black background. Three wordings to choose from.

- CC405-R "Reserved"
- CC405-F "Reserved Family"
- CC405-P "Reserved Pallbearer"



GOLD-PLATED RESERVED SEAT SIGNS

Similar to above, but with highly-polished gold finish.

- CC406-R "Reserved"
- CC406-F "Reserved Family"
- CC406-P "Reserved Pallbearer"
- CC303 Replacement ears



VELVET RESERVED SEAT SIGNS

Velvet signs with gold lettering.

- CC3311-R "Reserved"
- CC3311-F "Reserved Family"
- CC3311-P "Reserved Pallbearer"



SIGNS

Deluxe signs with gold lettering, rope and trimming.

- CC4411-R "Reserved"
- CC4411-F "Reserved Family"
- CC4411-P "Reserved Pallbearer"

PEW RESERVATION ROPING SYSTEMS

Help your guests know which pews or other areas are available and which are reserved for others. 1/2" diameter roping finished with tassels can be moved to reserve any pew or group of pews. For more permanent applications, 3/4" roping can be fitted with Brass or Chrome hook ends, to latch onto matching wall plates. All roping is made of heavy lustrous rayon and cotton, available in any length (priced by lineal foot, please specify). Either size is available in maroon, white, red, gold, green and blue.



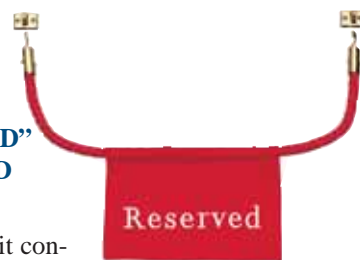
- CEPR-50 1/2" roping for tassels
- CEPR-51 tassels only
- CEPR-75 3/4" roping for hook ends
- CEPR-80-10 hook ends, Brass

- CEPR-80-9 hook ends, Chrome
- CEPR-81-10 matching wall plate, Brass
- CEPR-81-9 matching wall plate, Chrome

"RESERVED" PANEL AND ROPE SET

Complete unit consists of embroidered panel with "Reserved" in 2" letters, 2 wall plates, 2 hook ends and up to 24" of 3/4" roping. Available in your choice of red, maroon, white, blue, green, or gold.

- CEPR-90 "Reserved" Panel and Rope set



Traffic Control



PORTABLE SELF-FOLDING TRAFFIC GUIDES

Lightweight with built-in carrying handle for easy portability. Folds flat when not in use. 24" high x 10" wide. Chrome-plated metal legs with rubber tips. Sets of five include free wall bracket for convenient storage. Your choice of message or blank.

- CB 6401-5** set of five "Please No Parking Funeral" signs with wall bracket
- CB 6402-5** set of five "Funeral Parking Only" signs with wall bracket
- CB 6407-5** set of five "No Parking" signs with wall bracket
- CB 6406-5H** set of five "No Parking" signs with Handicap symbol and wall bracket
- CB 6408-5** set of five blank signs with wall bracket
- CB 6401-1** individual "Please No Parking Funeral" sign
- CB 6402-1** individual "Funeral Parking Only" sign
- CB 6407-1** individual "No Parking" sign
- CB 6406-1H** individual "No Parking" signs with Handicap symbol
- CB 6408-1** individual blank sign



PORTABLE SIDEWALK STAND SIGNS

18" x 18" signs made from heavy-duty 18 gauge steel with durable baked enamel finish. Printed on both sides. Overall height 52"

- CB 7501-FPO** Sidewalk Sign "Funeral Parking Only"
- CB 7502-FNP** Sidewalk Sign "Funeral No Parking"
- CB 7500-SP** Sidewalk Sign, Special Wording



CB 6415-18

CB 6420-28

POLYVINYL TRAFFIC CONES

Light weight traffic cones are ideal for controlling the flow of traffic. Your choice of 18" or 28" high in Solid Federal Orange. Blank- No Wording.

- CB 6415-18** 18" Polyvinyl Traffic Cones
- CB 6420-28** 28" Polyvinyl Traffic Cones

HAND-HELD STOP SIGNS

The perfect sign to control traffic. Hand-held sign is made from lightweight aluminum. Octagon shape. Red enamel with white lettering. Two sizes — 10" or 18"

- CB6403-10** 10" sign with "STOP FUNERAL" silkscreened on both sides
- CB6403-18** 18" sign with "STOP FUNERAL" silkscreened on both sides
- CB6404-18** 18" sign with "PLEASE TURN ON BRIGHT LIGHTS" silkscreened on both sides
- CB6406-18** 18" sign with "PLEASE TURN ON BRIGHT LIGHTS" silkscreened on one side and "STOP FUNERAL" on other side



PARKING METER COVER

Blue heavy-duty fabric with white lettering, slips easily and securely over standard parking meters.

- CE1730** Parking Meter Cover with "Reserved" message
- CE1732** Parking Meter Cover with "Funeral" message

Funeral Procession Aids

MAGNETIC IDENTIFICATION SAFETY MARKERS



Designed and manufactured especially for funeral procession use.

CE10120 White with Black Lettering

CE10122 Amber with Black Lettering

FUNERAL

MAGNETIC VEHICLE SIGNS

Attaches to most vehicle doors quickly and securely.

CE1852 24" x 6" Yellow sign with Black Lettering

CE1853 24" x 6" White sign with Black Lettering

CE1854 16" x 3" Yellow sign with Black Lettering

CE1855 16" x 3" White sign with Black Lettering



FUNERAL

MAGNETIC FUNERAL FLAGS

Flx-A-Post Magnetic Funeral Flags have a rust-proof shaft and a round plastic-covered base that will hold on all metal and many vinyl-covered car tops. Contact area is specially-prepared to prevent scratching of car surface. Choice of any small stock banner (6" x 9") on right.

CE 1903 Flexo-flag, nylon banner, spring shaft, magnetic base.

CE 1905 Flag carrier

CE 1906 Flag carrier with handle (holds 2 dozen flags)

CE 1907 Banners only (order by number at right)

CE 1908 American Flag small banner (6" x 9"), nylon, with magnetic base and staff

CE 1909 American Flag small banner (6" x 9") only

CE-LEAD Large 9½" x 17" Banner (order by number at right, adding "L" at end of product number), including double magnetic base

CE-AMN Same as above, with nylon American Banner, includes double magnetic base

CE-AMC Same as above, with cotton American Banner, includes double magnetic base

CE 1902-N Nylon American Banner only, 9½" x 17"

CE 1902-C Cotton American Banner only, 9½" x 17"

CE 1902-L Stock Lead Car Banners only, 9½" x 17" (order by number at right)

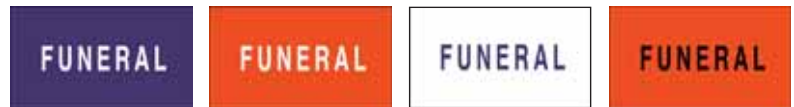


REVOLVING WARNING LIGHT

Bright, 55 watt halogen light revolves at 175 rpm to signal to other traffic that a funeral procession is under way. Includes 10 foot cord to plug into vehicle's cigarette lighter for power. Attaches to vehicle with included magnet, or may be with window bracket (*shown*). Other styles also available.

CEFB-3 Warning Light

CEFB-3WB Warning Light with window bracket, zinc coated for weather resistance, with protective pad for window



CE-N-1

CE-N-3

CE-N-2

CE-M-2



CE-J-1

CE-J-3

CE-J-2

CE-J-4



CE-O-1

CE-IL-1

CE-M-1

CE-M-3

STOCK BANNERS

CE-N-1 "Funeral" in white, purple background

CE-N-3 "Funeral" in white, orange background

CE-N-2 "Funeral" in purple, white background

CE-M-2 "Funeral" in black, orange background

CE-J-1 Star of David in white, purple background

CE-J-3 Star of David in white, orange background

CE-J-2 Star of David in purple, white background

CE-J-4 Star of David in black, orange background

CE-O-1 "Funeral" in white cross, purple background

CE-IL-1 "Funeral" in white cross, orange background

CE-M-1 "Funeral" in purple cross, white background

CE-M-3 "Funeral" in black cross, orange background

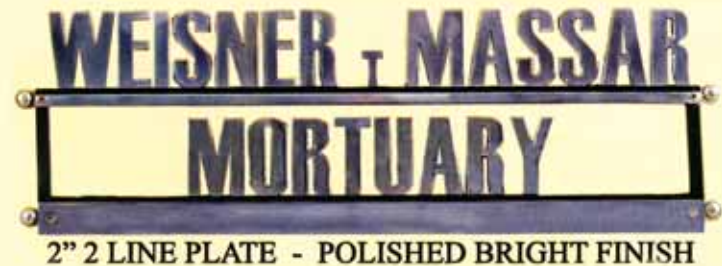
CE-M-4 Solid black cross, orange background



CE-M-4

OTHER

Hearse Signage



ALUMINUM NAME PLATES

A distinguished way to positively identify your vehicles. Available in Polished or Satin standard finished. Letters come with edges and back painted black. Unless otherwise specified, all plates come standard vice mounting. There are many custom styles, including Bright Chrome and Brass Plated Name Plates available for an extra charge.

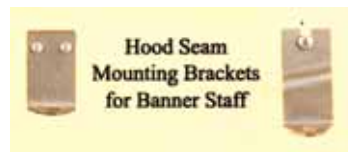
OPEN LETTER STYLES

- CB NP 20** 2" Block, Standard or Slant
Maximum 21 letters & spaces per plate
 - CB NP 30** 3" Block, Standard or Slant
Maximum 13 letters & spaces per plate
 - CB NP 40** 4" Block, Standard or Slant
Maximum 11 letters & spaces per plate
- Custom Script Style available for an extra charge.



MOUNTING BRACKETS

- CE NP 101 BRK** 4 Concave Vise Mounting Brackets
- CE NP 102 BRK** 2 Flat Vise Mounting Brackets



HOOD SEAM STYLE MOUNTING BRACKET

- CD FS 40144** Lincoln
 - CD FS 40165** Cadillac Year 2006 - up
 - CD FS 40143** Cadillac Year 2000 - 2005
 - CD FS 40145** Cadillac Year 1997 - 1999
- (Please specify left or right mounting bracket.)*

FLAG STAFFS AND PINS

- CD FS 40130** 12" Flag Staff
- CD FS 40135** Flag Staff Mounting Pin



GROOVE BOARD HEARSE NAME PLATE

Change the name simply by changing letters. Stainless Steel binding with generous lip for window mounting. Black Felt standard. Two sizes available (*not shown*).

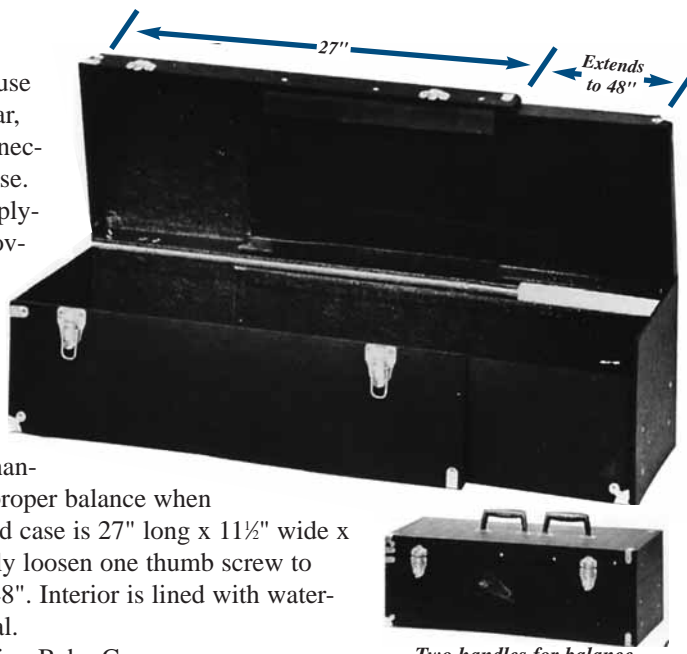
- CC 4GB-24** 24" x 4" Groove Board Name Plate
- CC 4GB-27** 27" x 4" Groove Board Name Plate

Miscellaneous Needs

EXTENSION BABY CASE

Enables you to use your personal car, eliminating the necessity for a hearse. Made of heavy plywood veneer, covered with black Leather-ette & chrome-plated hardware for added support & protection. Exclusive two-handle feature for proper balance when extended. Closed case is 27" long x 11½" wide x 9½" deep. Simply loosen one thumb screw to extend case to 48". Interior is lined with water-resistant material.

CB499 Extension Baby Case



Two handles for balance.

MOURNER'S ARM BAND

Black satin arm band with stretch elastic. 8" x 3" band with 4¾" x ¾" black stretch material.

CB1227-12 Mourner's Arm Band



CASKET FACIAL LAMP

A perfect aid to enhance the face of the deceased. Will also highlight the interior of the casket. Hangs on the casket lid. No bolts or clamps are needed. Comes with two colored bulbs giving a soft tinted effect. 8 foot cord. Polished brass finish.

CB 645 Facial Lamp with T-10 bulbs Magenta

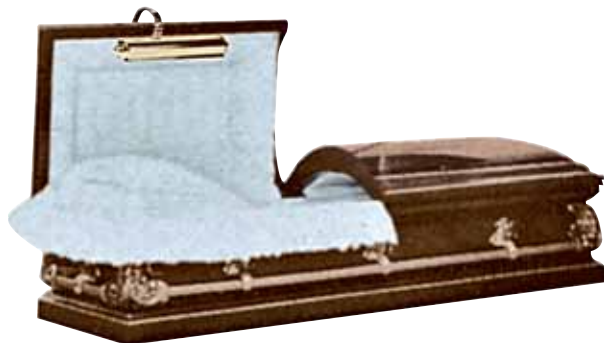
CB T-10 Magenta bulb

CN 646 Carrying bag, black soft vinyl bag

CN 647 Hard carrying case, black leatherette cover



CN 646



CN 647



SPECIALTY LIGHT BULBS

Church & Chapel stocks a wide variety of bulbs, including many hard-to-find types.

3-WAY MOGUL BASE BULBS

100-200-300 WATT BULBS

CB 100 Red Neck Bulb

CB 106 Blue Neck Bulb

CB 107 Pink Neck Bulb

CB 108 Purple Neck Bulb

CB 104 Soft White Bulb

TUBULAR BULBS

WITH EDISON BASE

CB 130 25 watt 6" Clear Bulb

CB 131 25 watt 6" Inside Frosted Bulb

CB 133 40 watt 6" Clear Bulb

CB 134 40 watt 6" Inside Frosted Bulb

FLICKER-FLAME BULBS

CB 140 3 watt bulb with 2¾" flame Candelabra base

CB 141 3 watt bulb with 3¾" flame Edison base

INSIDE REFLECTOR BULBS

Edison Base, Spot or Flood (used in ceiling fixtures)

BR models feature Bulge-style reflectors

CB 150 65 watt BR30 Flood Light Bulb

CB 151 65 watt BR30 Spot Light Bulb

CB 152 75 watt R30 Amber Bulb

CB 153 75 watt R30 Blue Bulb

CB 155 75 watt R30 Green Bulb

CB 156 75 watt R30 Pink Bulb

CB 157 75 watt R30 Red Bulb

CB 158 75 watt R30 Yellow Bulb

CB 159 75 watt BR40 Flood light Bulb

CB 160 100 watt BR40 Flood light Bulb

CB 161 100 watt BR40 Spot light Bulb

CB 162 120 watt BR40 Flood light Bulb

CB 163 120 watt BR40 Spot light Bulb

CB 164 150 watt R40 Amber Bulb

CB 165 150 watt R40 Blue Bulb

CB 167 150 watt R40 Green Bulb

CB 168 150 watt R40 Pink Bulb

CB 169 150 watt R40 Red Bulb

CB 170 150 watt R40 Yellow Bulb

Necessities and Niceties

VESTMENT STAND

Display religious vestments with the dignity they deserve. This beautiful stand features smooth Brass tubing and a solid Walnut hanger on a sturdy 12" Brass finish base. Includes a Brass dish for accessories.

CC565-10 Vestment Stand



COACHMAN'S UMBRELLA

Generously sized, these umbrellas are a thoughtful amenity to keep your guests comfortable during times of inclement weather. 100% nylon, supported by 16 sturdy ribs. A full 58" arc. Solid wood shaft, with comfortable straight acrylic handle. Available in Black, Grey, White, Wine, Royal Blue, Navy, Kelly Green, and Hunter Green.

CB 1388 Coachman's Umbrella (specify color)



HEAVY-DUTY "QUIET" CLOTHES HANGER

End the disturbing clanging of clothes hangers in your closet, with these long-lasting heavy-duty hangers. Made of heavy-gauge wire for years of service, the hangers are coated with a generous layer of vinyl to muffle noise when struck.

CB 17-VT "Quiet" Clothes Hanger



FLORAL BAG

An ideal way to distribute personal effects from the deceased, or any other items you may want to give clients. Large 16" x 6" x 12" floral print bag is made of heavyweight 70# paper, and features a sturdy handle. Optional custom imprints available (extra charge).

CB B626 Floral Print Bag



PORTABLE FLAG STAND

Bright Brass tripod stand with flag case in either White or Cherry wood.

CC 8060-27 White Portable Flag Stand

CC 8060-21 Cherry Portable Flag Stand



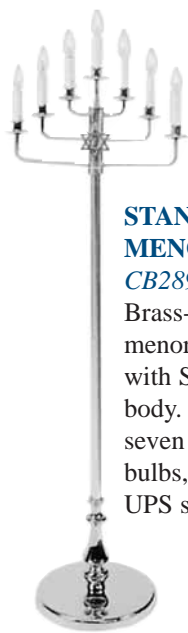
COMBINATION UMBRELLA STAND

A considerate convenience for your patrons, especially during inclement weather. All-steel with Durable Gold Powder Coat Finish. Rack holds 9 traditional-size plus 9 compact umbrellas. Short shelf 9 1/2" from top. Overall size: 20 3/4"H x 20 1/4"W x 11 3/4"D.

CC 1970-7 Combination Umbrella Rack



Jewish Service Needs

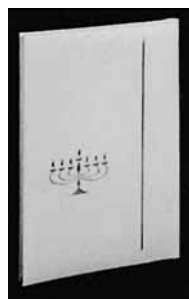


STANDING MENORAH

CB2895-7
Brass-finish standing menorah 60" high with Star of David in body. Complete with seven flicker-flame bulbs, on-off switch. UPS shippable.

7-DAY STAR OF DAVID CANDLE

CE2000
Glass with white Star of David. Available in Ruby or Blue.



DELUXE REGISTER BOOK

CE2114
Blue or white heavily-padded cover with gold-embossed candelabra. 30 white vellum pages. Imprinting available.



SHROUDS

CE1409-M Muslin sets for men.
CE1410-F Muslin sets for women.
CE1411-M Better cotton sets for men.
CE1412-F Better cotton sets for women.
(minimum order 3 sets)



SKULL CAPS

CE2112
Traditional Black Yarmelkas, unlined.
(minimum order 6 dozen)

MOURNER'S BUTTON (KREAH)

CE2110

Black covered button with ribbon and safety pin.



ACKNOWLEDGEMENT CARD

CE2116-9
Embossed menorah and Star of David with sentiment in black thermography. Quantity pricing available.
(not illustrated)

ADDITIONAL JEWISH SERVICE NEEDS

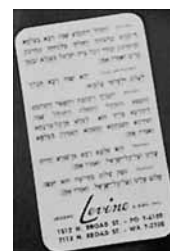
CE2118-B Ladies' Chapel Veils (caps) black.
CE2118-W Ladies' Chapel Veils (caps) white.
CE2120 Imported Earth from Israel.
CE2122 Casket cover (Pall with Star of David). Black wool with white Star of David.

SHIVA BENCH

CE2125
Providing this bench is essential for Jewish services. Have available for your clients the necessary



Shiva benches during their time of mourning. Inexpensive wood-grain corrugated carton. Will hold 1,000 lbs. Shipped flat for easy storage. Easy to assemble — no tape or staples needed. UPS shippable. Overall measurements 13 3/4" w x 10 1/2" d x 12 1/2" h.
(minimum order one dozen)

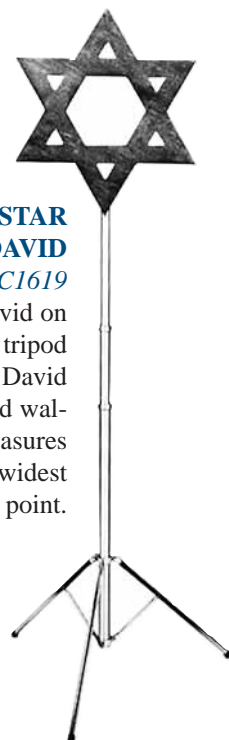


KADDISH CARDS

CE2115
Traditional Kaddish prayer for graveside services and other appropriate times. May be imprinted with your name.

STANDING STAR OF DAVID

CC1619
Star of David on adjustable tripod stand. Star of David made of solid walnut wood. Measures 24" at its widest point.



Crucifixes and Rosaries



CC 814 CE 2518 RCE 2382 CE 2107 CE 2100 CC P814 CE 2102 CE 2105 CE 2968 RC 814 CELTIC CROSS

CASKET & MEMORIAL CRUCIFIXES — A wide variety of styles and finishes, with designs for virtually every Christian faith. Optional carrying cases available for each crucifix, extra.

Model CC 814 — 13 3/8" x 8" x 1" (suitable for exterior use)

- CC814-1 Antique Gold-Plated Finish
- CC 814-2 Copper Tone Plated Finish
- CC 814-3 Antique Silver-Plated Finish
- CC 814-4 Statuary Bronze-Plated Finish

Model CE 2518 — 10" tall (interior use only)

- CE 2518-1 Gold-Plated Brass Cross - Bronze Corpus
- CE 2518-2 Gold-Plated Brass Cross - Copper-Tone Corpus
- CE 2518-3 Nickel-Plated Brass Cross - Silver Oxide Corpus

Model RCE 2382 — 10" tall (interior use only)

- RCE 2382-1 Gold-Plated Brass Cross - Bronze Risen Corpus
- RCE 2382-2 Gold-Plated Brass Cross - Copper-Tone Risen Corpus
- RCE 2382-3 Nickel-Plated Brass Cross - Silver Oxide Risen Corpus

Model CE 2107 — 10" tall (interior use only)

- CE 2107-1 Gold-Plated Cross with Gold Praying Hands
- CE 2107-3 Nickel-Plated Cross with Silver Praying Hands

Model CE 2100 — 10" tall (interior use only)

- CE 2100-1 Gold-Plated Plain Protestant Cross
- CE 2100-3 Nickel-Plated Plain Protestant Cross

Model CC P814 — 13 3/8" x 8" x 1" (suitable for exterior use)

- CC P814-1 Antique Gold Plain Cross (no corpus)
- CC P814-2 Copper-Tone Plain Cross (no corpus)
- CC P814-3 Antique Silver Plain Cross (no corpus)
- CC P814-4 Statuary Bronze Plain Cross (no corpus)

Model CE 2102 — 10" tall (interior use only)

- CE 2102-1 Gold-Plated Brass Cross - Bronze Corpus
- CE 2102-2 Gold-Plated Brass Cross - Copper-Tone Corpus
- CE 2102-3 Nickel-Plated Brass Cross - Silver Oxide Corpus

Model CE 2105 — 10" tall (interior use only)

- CE 2105-1 Gold-Plated Brass Cross - Bronze Corpus
- CE 2105-2 Gold-Plated Brass Cross - Copper-Tone Corpus
- CE 2105-3 Nickel-Plated Brass Cross - Silver Oxide Corpus

Model CE 2968 — 10" tall (interior use only)

- CE 2968-6 Polished Brass Cross - Flesh-Colored Plastic Corpus

Model RC 814 — 13 3/8" x 8" x 1" (suitable for exterior use)

- RC 814-1 Antique Gold Plated Finish
- RC 814-2 Copper-Tone Plated Finish
- RC 814-3 Antique Silver Plated Finish
- RC P814-4 Statuary Bronze Plated Finish

CELTIC CROSS

- CE CC 4300 11" Solid Brass
- CE CC 4302 7" Solid Brass
- CE CC 4301 5.5" Solid Brass

HOLY WATER CONTAINERS

Made from solid Brass bar, machined the old-fashioned way, and gold-plated.

- CE 7676 Holy Water Container
- CE 7675 Holy Water Sprinkler with sand holder and case
- CE 7673 Holy Water Sprinkler
- CE 7677 Sand Container (not shown)



ROSARIES

- CB 150 20" Oval plastic beads, silver-plated quadruple interlock chain, hammered crucifix. Available in Black, Crystal, White, Pink, or Blue (please specify).
- CB 503 5mm Aurora Borealis beads in soldered link chain 18" long, in Crystal, Solid Black, Blue, Pink, or Jet (please specify).
- CB 515 (not shown, similar to CB 503, but larger beads) 7mm Aurora Borealis beads, lock-link construction 22 1/2" long. In Crystal, Blue, Pink, or Jet (please specify).
- CB83010 3 1/2" x 2 1/2" zipper-top Rosary Case Available Black or White (please specify).

Memorial Altar and Display Tray



MEMORIAL ALTAR

Now you can have the appropriate setting when a memorial service is requested with the urn present. The altar is made of easy-care laminated Formica® in an assortment of wood grain finishes. Decorated with metal Laurel Wreath in a Bronze finish. Optional solid Bronze candlesticks complete the altar. The altar may also be used as an infant casket bier. 32" high x 42" wide x 22" deep at the top. Base measures 24" wide x 16" deep. As shown with Walnut grain Formica, optional candlesticks and model **CBU336 Sarcophagus Solid Bronze Urn**. Also available in Oak, Maple or White formica; and genuine Oak, Walnut, or Cherry wood veneer. Also available without wreath.

- CB 4590** Memorial Altar, Walnut grain Formica finish
- CB 4590 SF** Memorial Altar, premium Formica finish (*Oak, Maple or White Formica - specify choice*)
- CB 4590 SWV** Memorial Altar, genuine wood veneer finish (*Oak, Walnut, or Cherry wood - specify choice*)
- CE 451-CS** Optional Solid Bronze Candlesticks
- CE 5031-6** 1½"x9" Olivaxine Candles (18/case)

COMBINATION PORTABLE REGISTER STAND/URN DISPLAY

- CC 8010** Portable Register Stand
- CC 8020** Drape
- CC 8030** Wire Easel Frame Holder
- CC 8040** Carrying Case
- CC 8050** Complete Set (all above listed items)



MEMORIAL DISPLAY TRAY

Introducing the New Memorial Display Tray. Accommodates any church truck for a memorial or full church service. Easily adjustable arms are provided to handle small cremation urns and baby caskets from stillborn up to 24". Side rails make lifting easy for pallbearers. 3 styles are offered. Plastic laminate, solid cherry wood or oak wood. The tray has brass trim and an upholstered top with your choice of a standard fabric. Overall dimensions: 43"L x 28"W x 9½"H. Easily fits into any hearse.

- CC 642-C** Solid Cherry Memorial Display Tray
- CC 643-O** Solid Oak Memorial Display Tray
- CC 644-P** Plastic Laminate Memorial Display Tray

Cemetery Needs



CE WG-7

PORTABLE REGISTER STAND

Your choice of two popular, truly portable register/lectern stands. Both are made of Gold anodized aluminum, and are suitable for outdoor use.

CE WG-7

Folding Portable Register Stand — folds flat for convenient storage

CE WG-7-CASE

Carrying Case for above

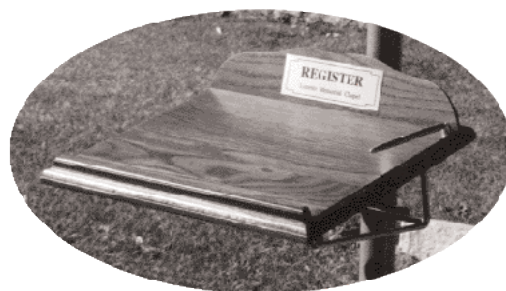
Adjustable-height Portable Register Stand — folds in compact case

CE XL-8-CASE

Carrying Case for above



CE XL-8



CEMETERY POLE REGISTER DISPLAY

Eliminate the unprofessional practice of signing a register on stones, car hoods or the back of a visitor. Professional register display easily attaches securely to a steel or aluminum tent pole in just seconds. Made of solid wood with weather-resistant finish and zinc-plated rust-proof frame.

CE EP 101

Deluxe model, Oak, with firm's name imprint

CE EP 103

Utility model, Oak, (no imprint)

CE EP 102

Utility model, Pine, (no imprint)

ALUMINUM GRAVE BOARDS

Eliminate warping, dry rot, rusting and cracking by using these lightweight, durable aluminum grave boards.

Each 14" x 10' graveboard weighs only 55 lbs, but will support well over half a ton, so one workman can handle the entire setup.

CD 33GB 514

Set of 2 Aluminum Grave Boards



"X-TENSO" ACCORDION SEATING SYSTEM

Maximum versatility, easy set-up and minimal storage characterize this clever

method of offering convenient seating almost anywhere. Available in increments of two to six seats, the all-aluminum construction and unique accordion design provide problem-free opening, arranging, closing, transporting and storage. Non-tilt design and rustproof telescopic leg action provide stable, self-leveling seating. Seats and backs are made of durable woven forest green polyester.

CD 3300902

Two-chair accordion seating system

CD 3300903

Three-chair accordion seating system

CD 3300904

Four-chair accordion seating system

CD 3300905

Five-chair accordion seating system

CD 3300906

Six-chair accordion seating system

CD 3300CC1

2-4 chair carrying case

CD 3300CC2

5-6 chair carrying case



Optional carrying case makes transporting folded sets particularly convenient.

"LECTRAY" COMBINATION LECTERN AND COMMITTAL TRAY

Can be used as a lectern/guest register stand, urn committal tray, or both — easily assembled in whichever configuration you need. Features durable all-steel construction with silver-grey hammertone finish. Non-marking, non-skid rubber feet, with detachable ground stakes make this unit ideal for indoor or outdoor use.

CD 33CT010 "LecTray"

Lectern-Urn Committal Stand Combination



Converts to stand or urn committal tray.



Converts to lectern or register stand.