

**NCSCBHEP – 39<sup>th</sup> Annual National Conference**  
**APRIL 2, 2012: (CUNY Graduate Center)**  
***“Productivity & Accountability”***

Respondent:

**Angelo Armenti, Jr., President, *California University of PA***

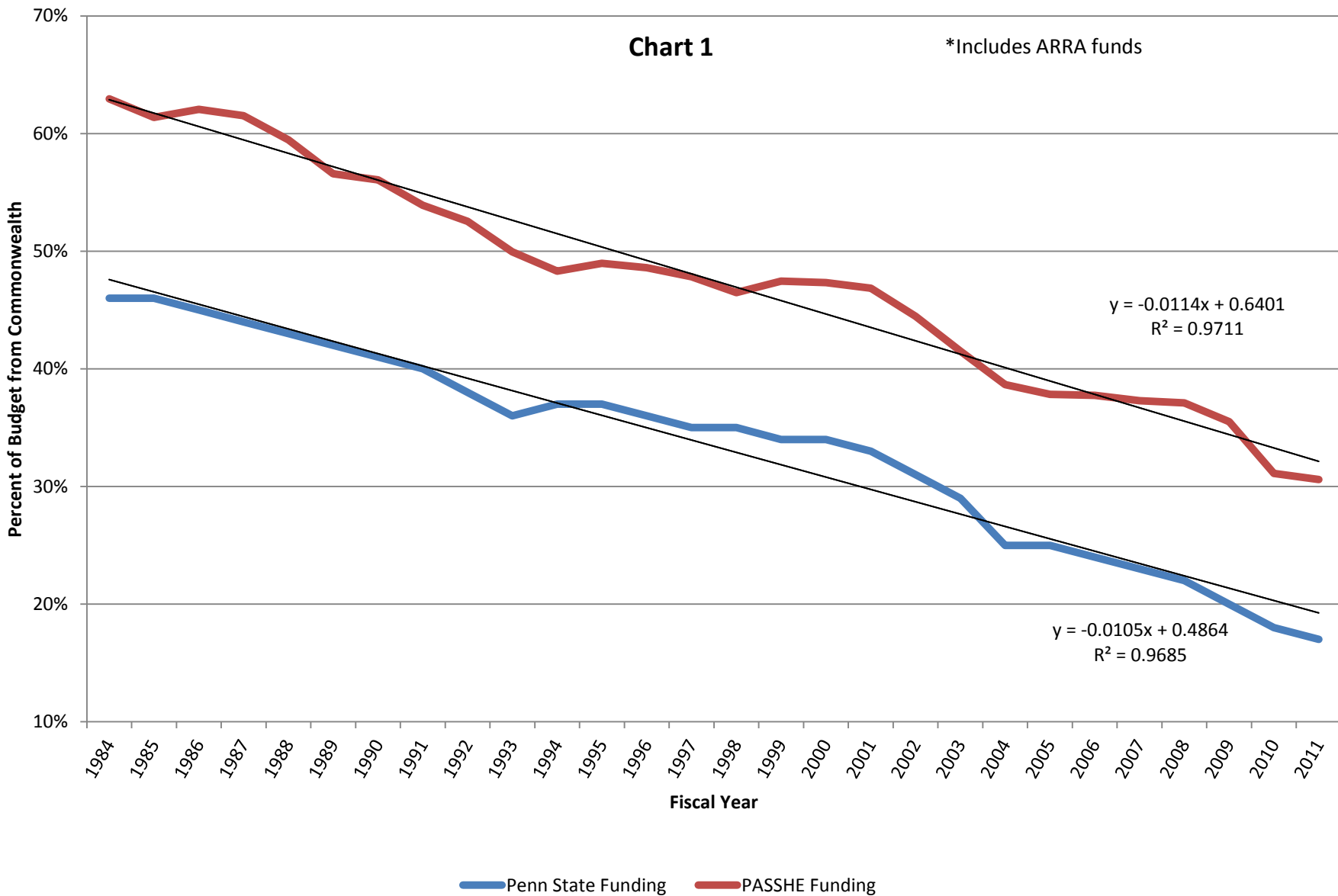
Angelo Armenti, Jr., Ph.D., President

California University of Pennsylvania

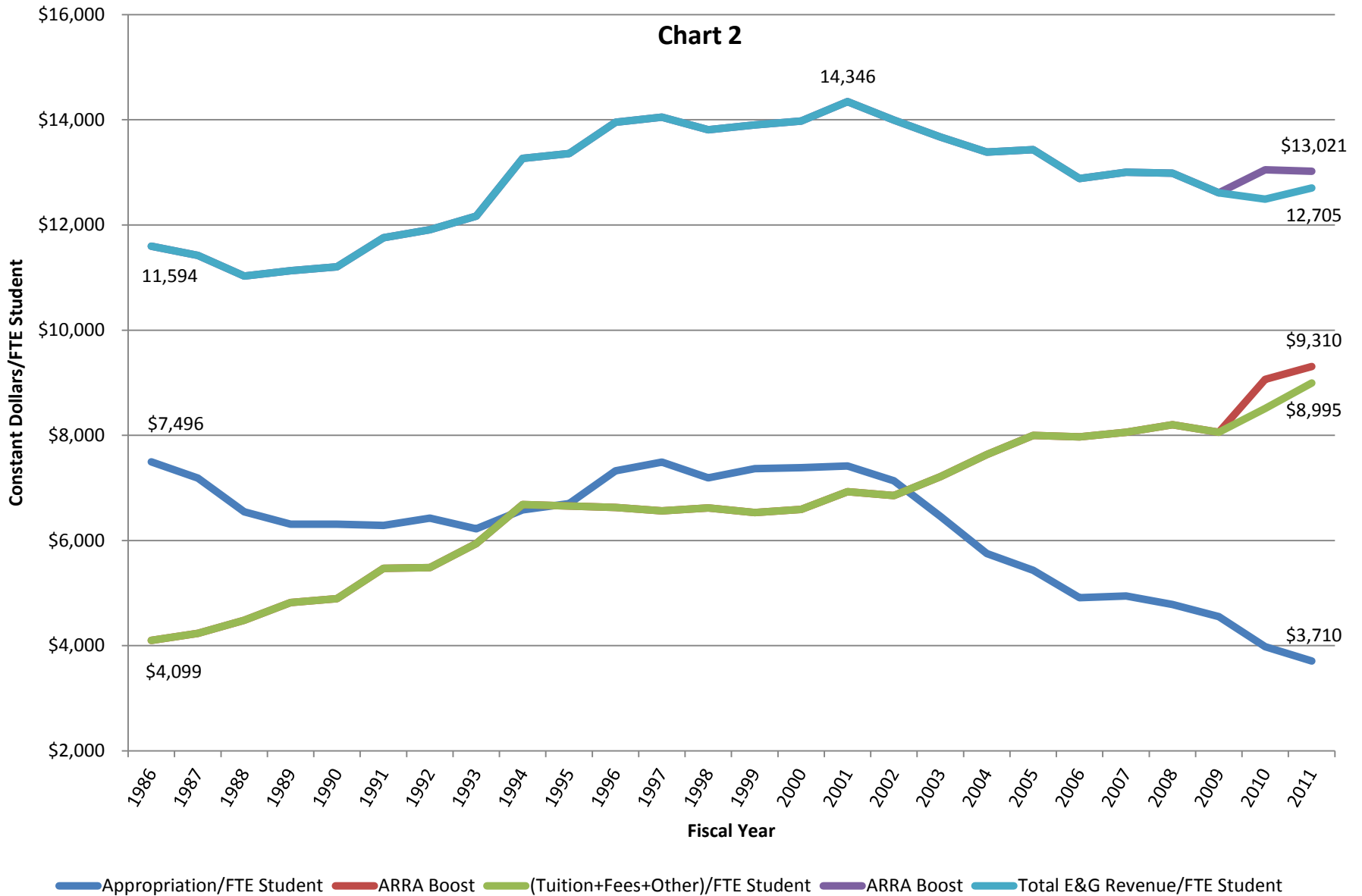
250 University Avenue

California, PA 15419

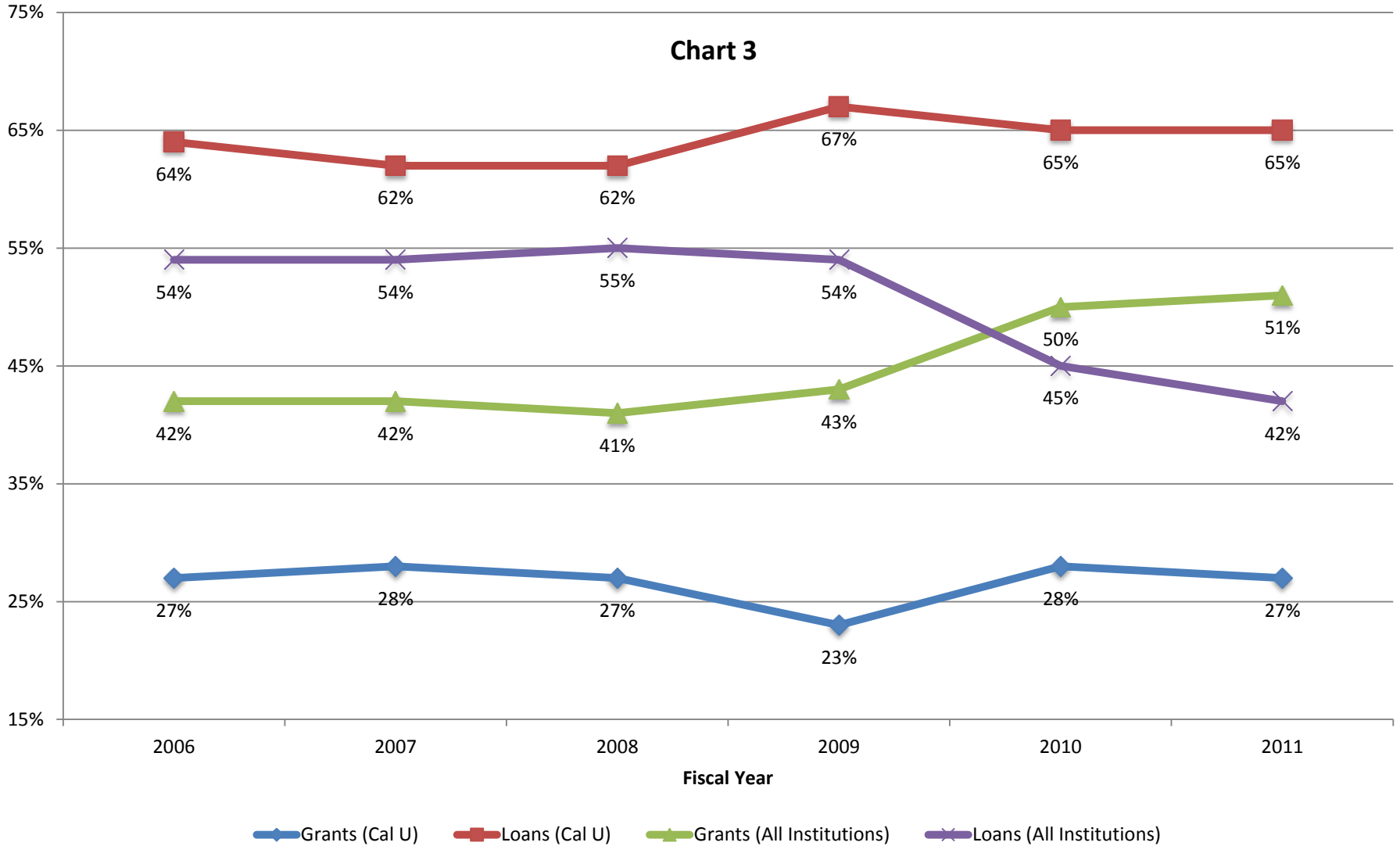
# 28 Years of Declining Public Support in Pennsylvania\*



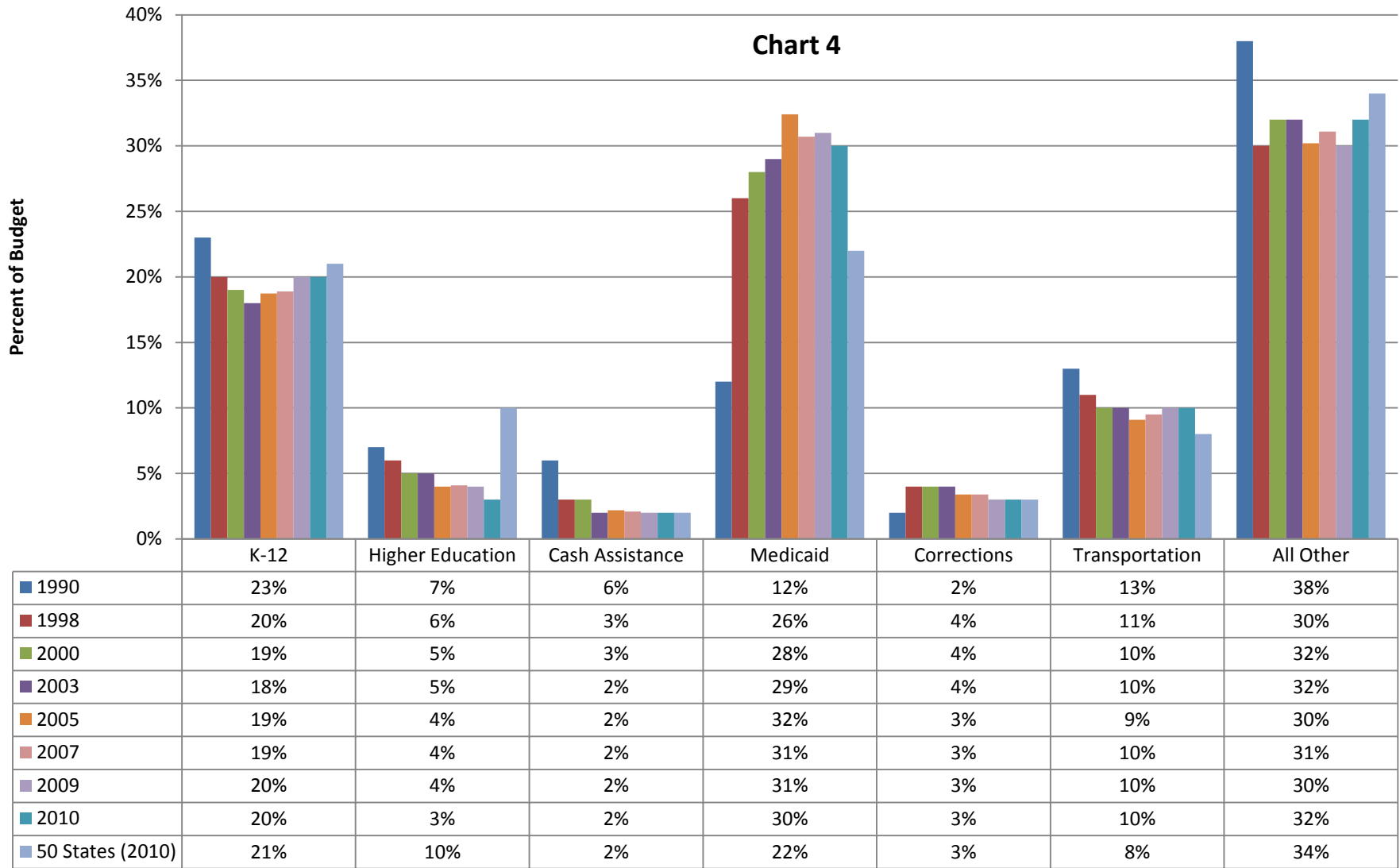
# Cal U: Constant Dollars/FTE Student - 1986 to 2011



# Grants v Loans as a Percent Share of Total Aid Awarded (current dollars) at California University v All Institutions for Undergraduate Students for the Award Years 2006-2011



## Pennsylvania Budget (1990-2010) vs. Average of the 50 States (2010)



**Sectors**

■ 1990  
 ■ 1998  
 ■ 2000  
 ■ 2003  
 ■ 2005  
 ■ 2007  
 ■ 2009  
 ■ 2010  
 ■ 50 States (2010)