

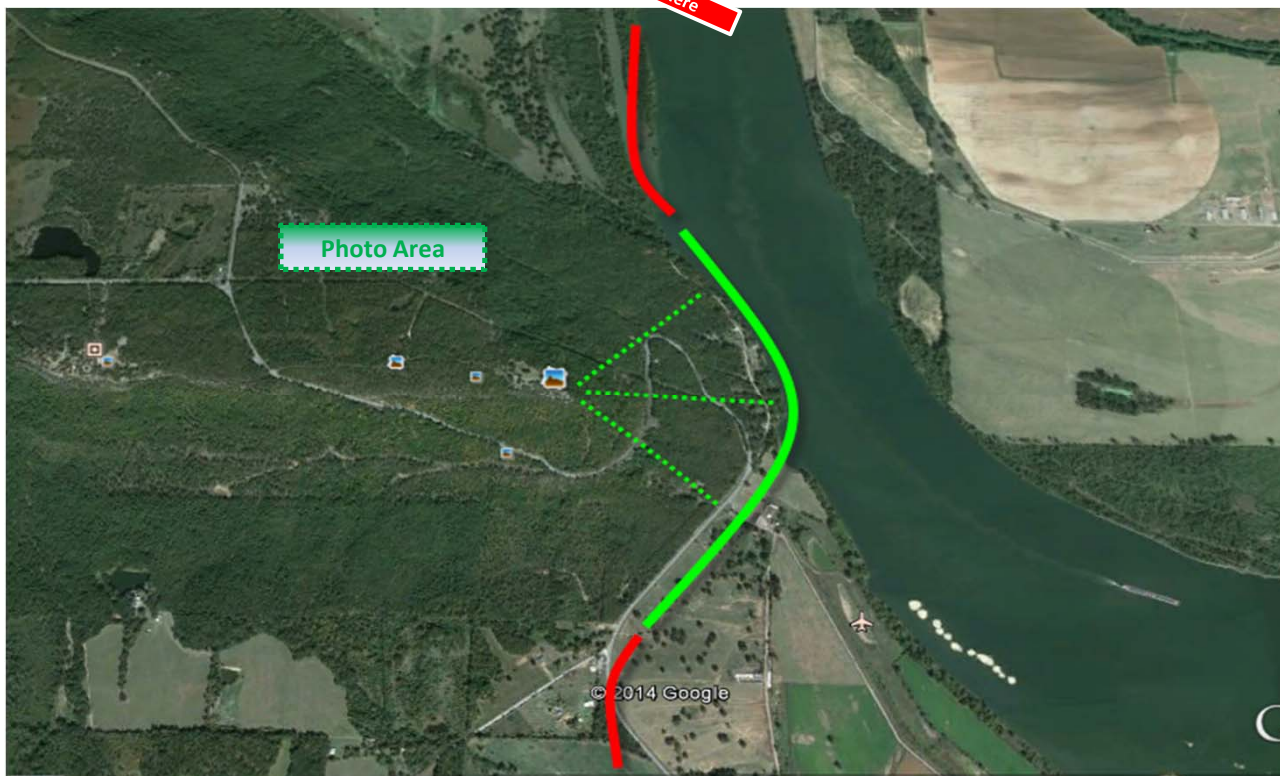
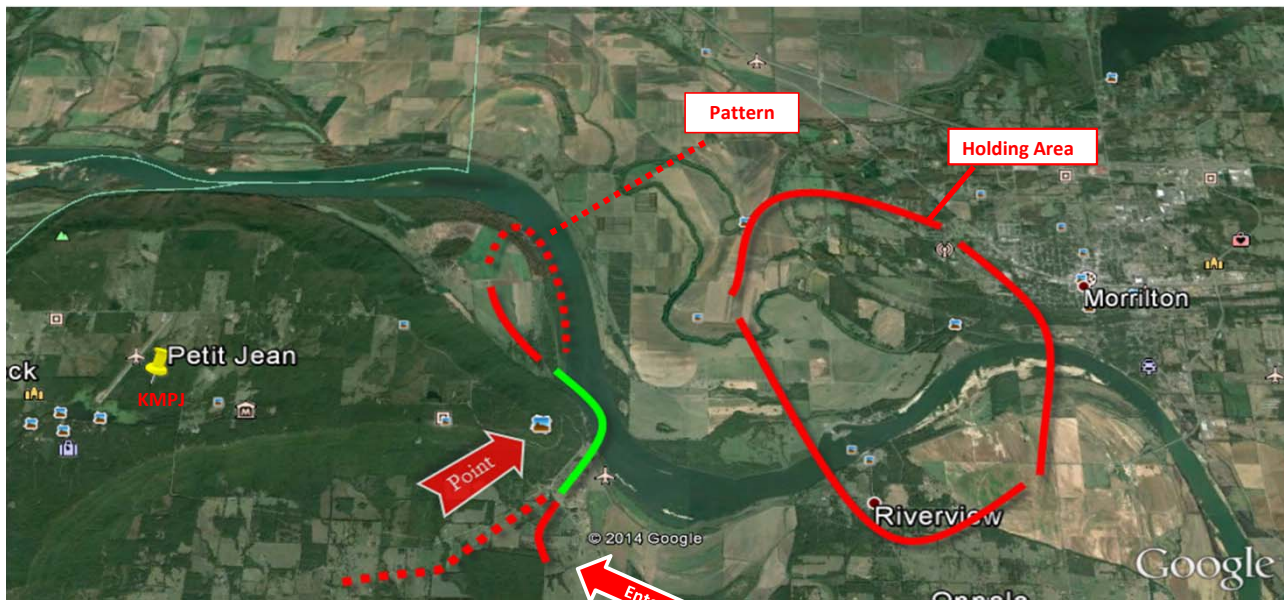


Photo Arrival

Call in on 122.9 10-15 miles out and ask for Photo 1. **Enter Photo Pattern from the SouthEast Side.** Try to be around 800-900 MSL which will put you below the overlook but 500 feet AGL over the river. Try to fly a nice arc around the point at about 110-115 MPH. You will enter and basically fly over the road(s) and as reasonably close as you are comfortable. There is a lot of room. If the traffic allows, try to fly the closer pattern shown with the red dotted line.

Hold in the flat ground and wait if he is backed up. Dan will tell you if he got some good shots. Don't forget to smile & wave! Study the pictures and stay at least over the road around the point. It's 4 miles from the Point to the Airport. Plenty of room!

When PHOTO RUN is complete Climb and Exit to the SouthWest
Call AIR BOSS on 122.9 for landing advisory. He will be monitoring Picture runs as well!



Call Air Boss on 122.9 after Photo runs for landing advisory.

We will also try to shoot landing pictures if we are landing to the north.