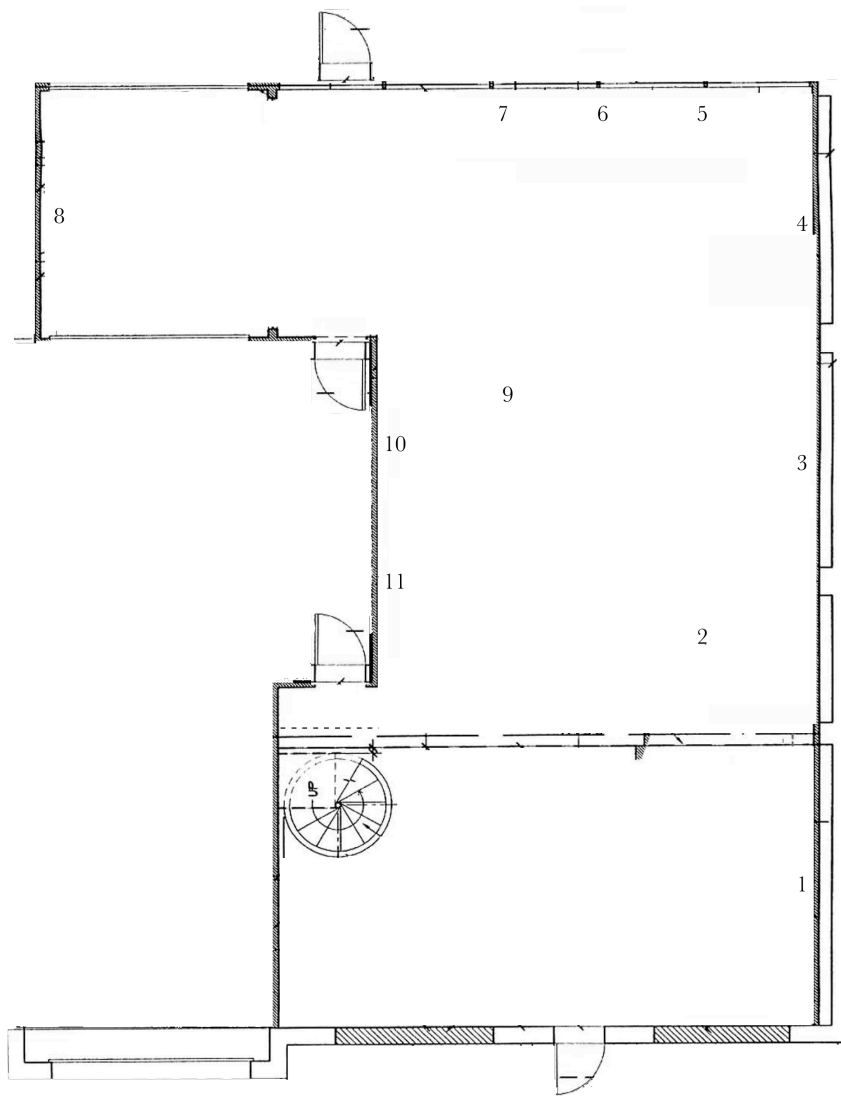


WHITE FLAG PROJECTS

A Peg to Hang It On

April 18 – May 30, 2015

Strauss Bourque-LaFrance
Jennifer Boysen
Jeremy DePrez
Sam Moyer
Noam Rappaport
Michael Rey
Betty Woodman



1- Jennifer Boysen

Untitled, 2013

Pigment and tempera on canvas

156 x 58 inches

2- Betty Woodman

Green Border Rug, 2011

Glazed earthenware, canvas, acrylic paint

56 x 43 1/4 inches

3- Noam Rappaport

Reverse Impression, 2014

Oil and acrylic on canvas

60.75 x 58.625 x 1.75 inches

4- Sam Moyer

Me and My Arrow, 2015

Marble, ink on canvas mounted to MDF panel

56 1/4 x 43 x 3/4 inches

5- Michael Rey

M.Cizzer-Pur, 2015

Oil on Plasticine clay on panel

80 x 28 x 1.5 inches

6- Michael Rey

WATTT, 2015

Oil on Plasticine clay on panel

50 x 28 x 1.5 inches

7- Michael Rey

Bird Signal, 2015

Oil on Plasticine clay on panel

80 x 32 x 1.5 inches

8- Strauss Bourque-LaFrance

Mothership, 2015

Altered bed sheet

85 x 68 inches

9- Betty Woodman

Blue Rug, 2011

Glazed earthenware, canvas, acrylic paint

43 x 139 1/4 inches

10- Jeremy DePrez

Untitled (MMMMMMMMMMMMMMMMMMMMMMMMMMMMM), 2015

Acrylic and modeling paste on canvas over panel

84 x 58.5 inches

11- Jeremy DePrez

Untitled, 2015

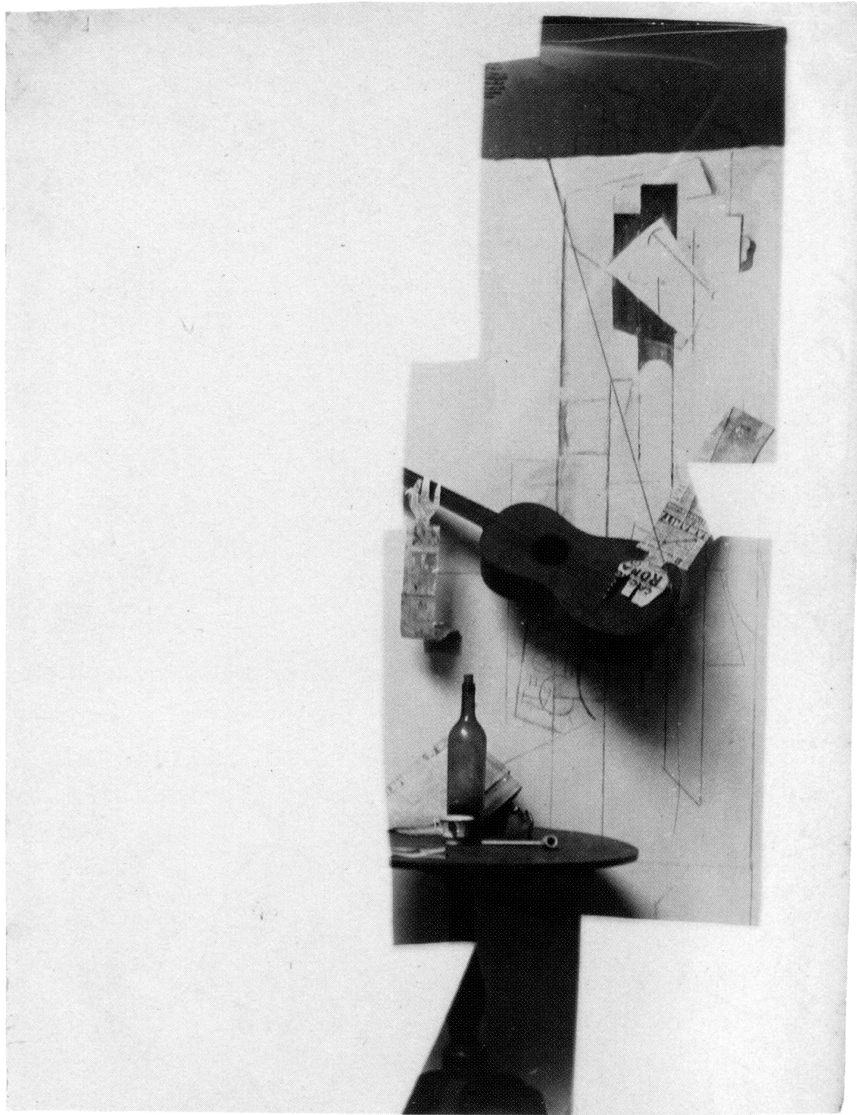
Acrylic on canvas

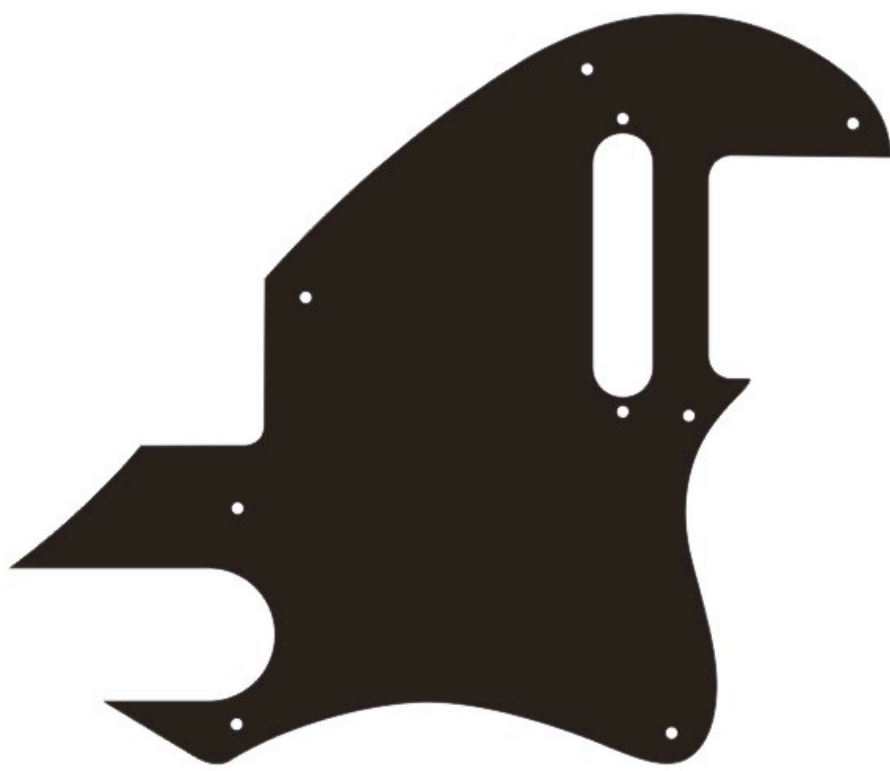
85.5 x 53 inches

Façade- Strauss Bourque-LaFrance

Dracula Lives Here, 2015

Digital print on vinyl; 154 x 154 inches







About the artists

Strauss Bourque-LaFrance has held solo exhibitions with Rachel Uffner Gallery, New York; Bodega, Philadelphia; and KANSAS, New York. His work has been included in group exhibitions with the Institute for Contemporary Art (ICA) Philadelphia; SculptureCenter, Long Island City; and Vox Populi, Philadelphia. Bourque-LaFrance earned his MFA from the Tyler School of Art, Philadelphia and the Skowhegan School of Painting and Sculpture. He lives and works in Brooklyn.

Jennifer Boysen has exhibited with Cherry and Martin, Los Angeles; LACMA, Los Angeles; Galerie Frank Elbaz, Paris; Public Fiction, Los Angeles; Night Gallery, Los Angeles; and Kate Werble Gallery, New York. Boysen received her MFA from Hunter College. She lives and works in Sierra Madre, California.

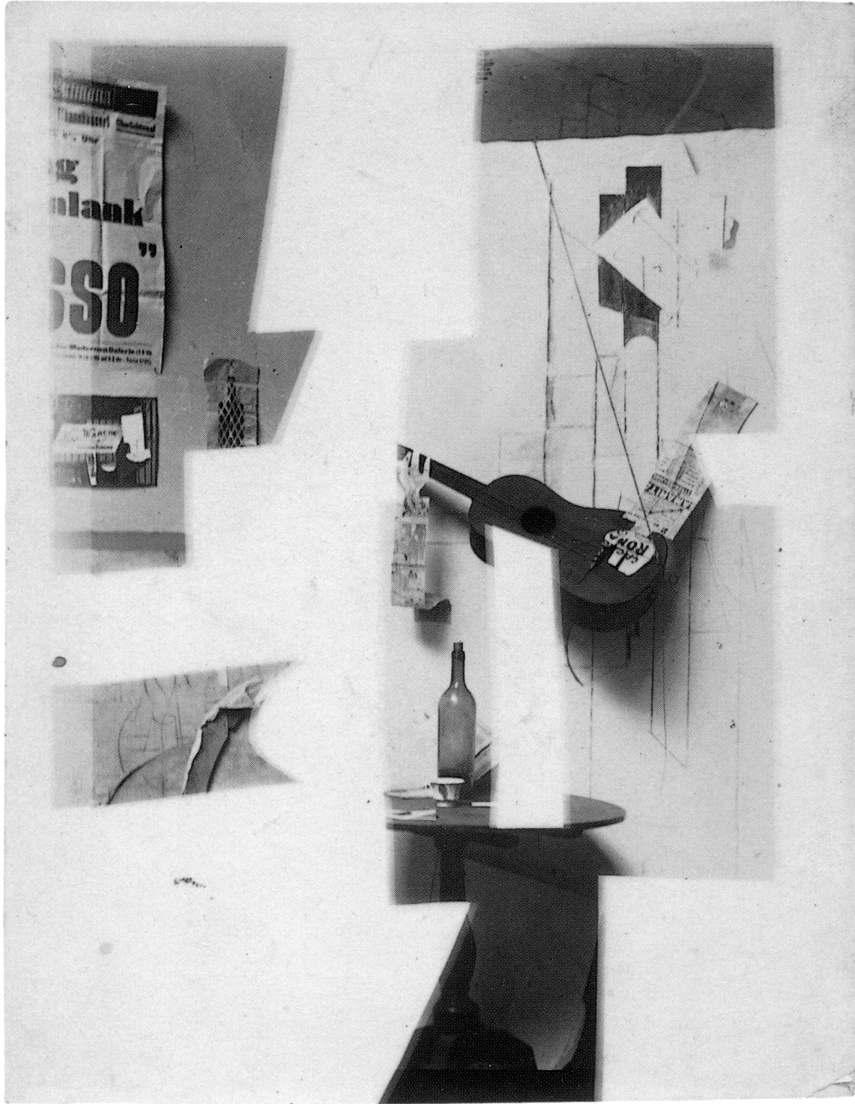
Jeremy DePrez has exhibited with Zach Feuer, New York; Blaffer Museum, Houston; Luxembourg & Dayan, New York; and Colab Projects/Fretchen, Austin. DePrez earned his MFA from the University of Houston. He lives and works in Houston.

Sam Moyer has held solo and two-person exhibitions with Rachel Uffner Gallery, New York; Société, Berlin; Cleopatra's, Brooklyn; and Galerie Rodolphe Janssen, Brussels. Moyer has contributed works to group exhibitions with Artists Space, New York; Brand New Gallery, Milan; Swiss Institute, New York; Tensta Konsthall, Stockholm; MoMA P.S.1, Long Island City; UNTITLED, New York; Tanya Bonakdar Gallery, New York; Public Art Fund, New York; Night Gallery, Los Angeles; and Clifton Benevento Gallery, New York. She received her MFA from Yale. Moyer lives and works in Brooklyn.

Noam Rappaport has held solo and two-person exhibitions with James Fuentes, New York; White Columns, New York; Ratio 3, San Francisco; and ATM Gallery, New York. Rappaport has participated in group exhibitions with Artists Space, New York; Brand New Gallery, Milan; Printed Matter, New York; Tanya Bonakdar Gallery, New York; and Cherry and Martin, Los Angeles. His work has been discussed in Artforum, The New York Times, and Art in Review among other publications. He holds a BFA from the School of Visual Arts, New York. Rappaport lives and works in Los Angeles.

Michael Rey has held solo exhibitions with Cherry and Martin, Los Angeles; Room East, New York; Young Art, Los Angeles, and has forthcoming solo exhibitions with Office Baroque, Brussels and Zero, Milan. Rey has participated in group exhibitions with the Swiss Institute, New York; and Lisson Gallery, London among others. Rey earned his MFA at the Art Center College of Design. He lives and works in Los Angeles.

Betty Woodman has held solo exhibitions with Salon 94, New York; Stedelijk Museum, Amsterdam; Galerie Isabella Bortolozzi, Berlin; Galerie Francesca Pia; Zurich; and the Metropolitan Museum of Art, New York. Her group exhibitions include the Museum of Modern Art, New York; The Walker Art Center, Minneapolis; and the LACMA, Los Angeles. Woodman lives and works in New York City and Antella, Italy.



Illustrations

Cover- Gibson Flying V Guitar Pickguard

1- Pablo Picasso, Photographic composition with *Construction with Guitar Player*, 1913
Masked silver gelatin print, 4 5/16 x 3 9/16 inches

2- Fender Telecaster F-Hole Guitar Pickguard

3- Gibson SG Standard Guitar Full Face Pickguard

4- Pablo Picasso, Photographic composition with *Construction with Guitar Player*, 1913
Masked silver gelatin print, 4 1/2 x 3 7/16 inches

Back cover- Pablo Picasso, Photographic composition with *Construction with Guitar Player*, 1913
Silver gelatin print, 4 5/8 x 3 7/16 inches

Support

The Andy Warhol Foundation for the Visual Arts

Lenders

Strauss Bourque-LaFrance courtesy the artist and Rachel Uffner Gallery, New York

Jennifer Boysen courtesy the artist and Cherry and Martin, Los Angeles

Sam Moyer courtesy the artist and Rachel Uffner Gallery, New York

Noam Rappaport courtesy the artist and James Fuentes, New York

Michael Rey courtesy the artist and Cherry and Martin, Los Angeles

Jeremy DePrez courtesy the artist and Zach Feuer, New York

Betty Woodman courtesy the artist and Salon94, New York

White Flag Projects

Matthew Strauss
Founder & Director

Marie Heilich
Assistant Director

Tim Young
Installation Manager

Mac Holtsclaw, Shirin Rastin
Interns

WHITE FLAG PROJECTS
4568 Manchester Avenue
Saint Louis, Missouri 63110

www.whiteflagprojects.org



WHITE FLAG PROJECTS