

WHITE FLAG PROJECTS

Very Level Walls

She paused and wondered if the work needed to sit perfectly flush.

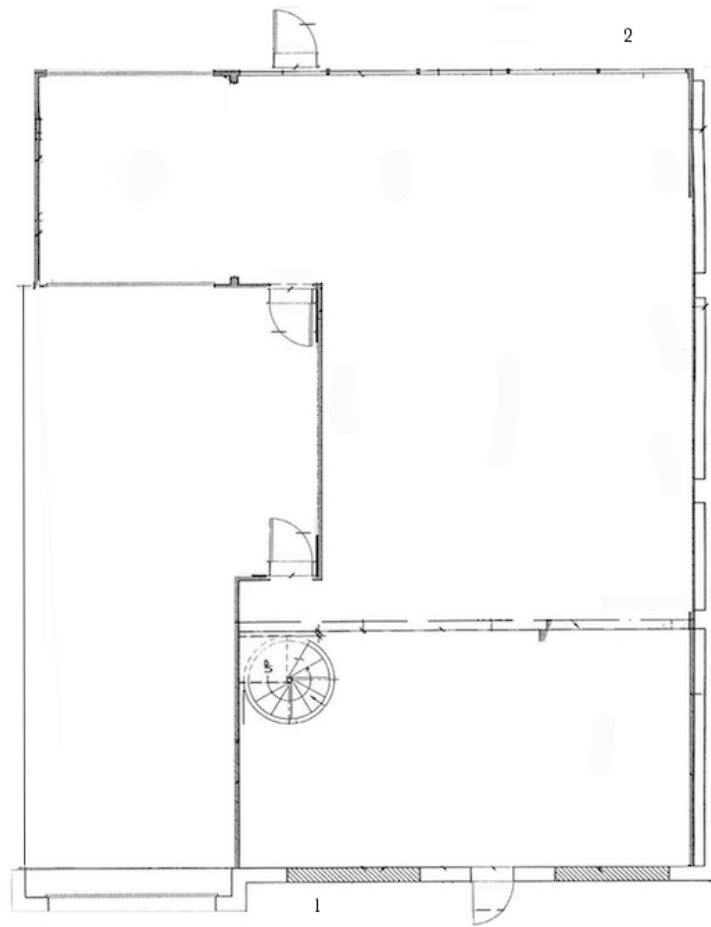
“These walls are poured nano-cement”

and she didn’t want the distraction of construction to interfere with the experience.

“But the works were made in the 2000’s, before accelerated concrete....”

“Perhaps the walls should be purposely uneven to respond to the work.”

She paused more, looked outside and then back at the space again.



1- Andrew Norman Wilson
Robin Williams window shade, 2015
Vegetable tanned leather, acrylic
paint, 3D powder print, steel chains,
swimbait fish hooks
84 x 6 x 7 inches

2- Max Stolkin
The Stranger, 2015
Weather balloon, air, book page
Dimensions vary