





WHITE FLAG PROJECTS

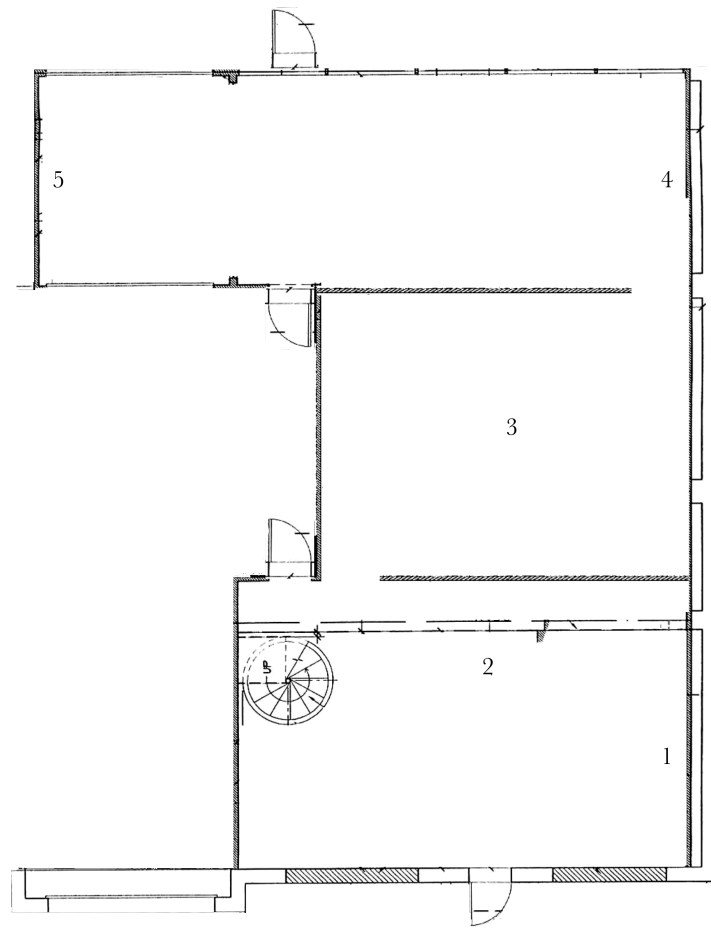
# *Fear of a Blank Pancake*

January 23 – March 12, 2016

Kelly Akashi  
Elizabeth Jaeger  
Calvin Marcus  
Anna Uddenberg  
Charlie White







1- Elizabeth Jaeger  
*Odalisque*, 2015  
Ceramic, granite, steel, human hair  
52 x 5 x 12 inches

2- Kelly Akashi  
*Untitled*, 2012-15  
Wax, wick, glass with pigmented frit  
Dimensions variable

3- Anna Uddenberg  
*Jealous Jasmin*, 2014  
Styrofoam, glassfiber, aqua-resin, stroller, synthetic hair, Uggs, fabric  
50 x 49.5 x 41 inches

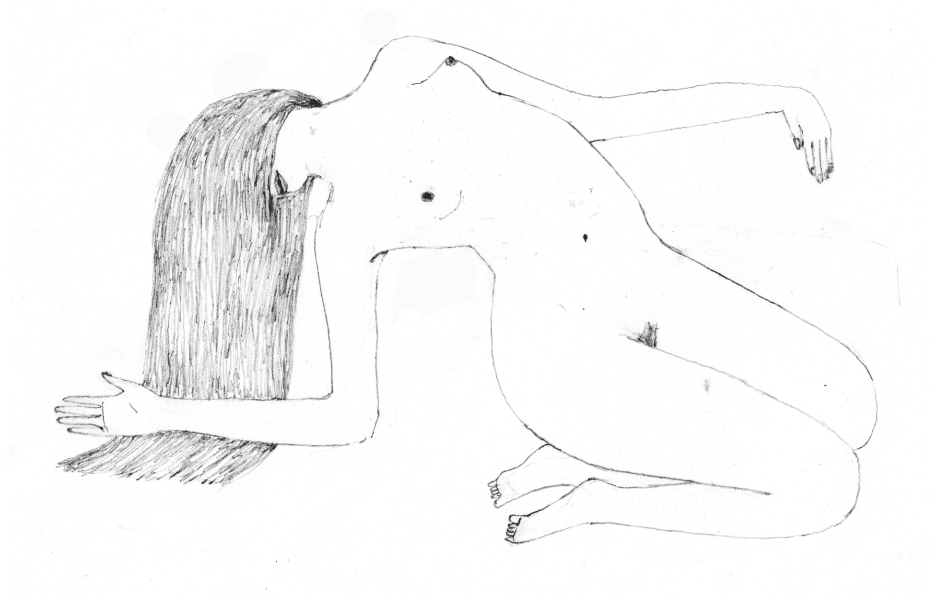
4- Charlie White  
*The Persuaders*, 2003  
Chromogenic C-print  
44 x 61.5 inches

5- Charlie White  
*Tod Hackett*, 2010  
YouTube videos, 30:21 minutes

Façade- Calvin Marcus  
*Untitled*, 2015  
Digital print on vinyl  
154 x 154 inches









### About the artists

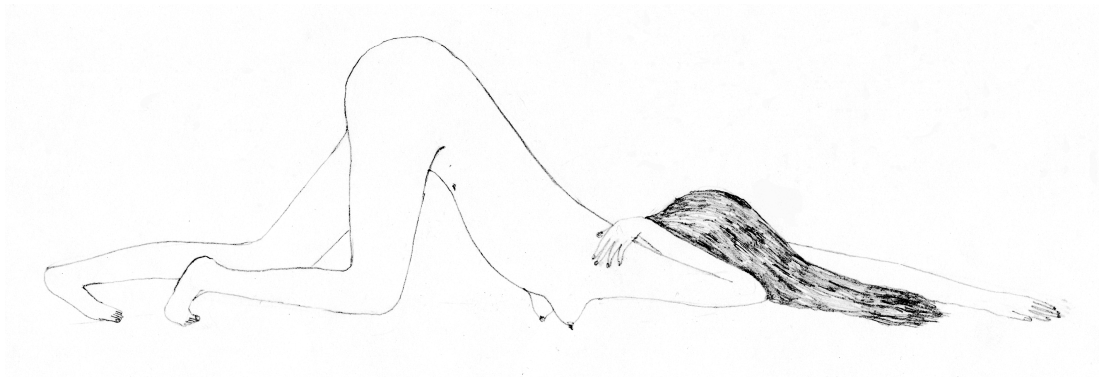
Kelly Akashi has held solo exhibitions with Tomorrow Gallery, New York; Between Arrival & Departure, Düsseldorf; and Chin's Push, Los Angeles. Her work has been included in group exhibitions with Midway Contemporary Art, Minneapolis; and Michael Thibault, Los Angeles. Akashi attended Städelschule, Frankfurt am Main and earned her MFA from the University of Southern California, Los Angeles. Akashi lives and works in Los Angeles.

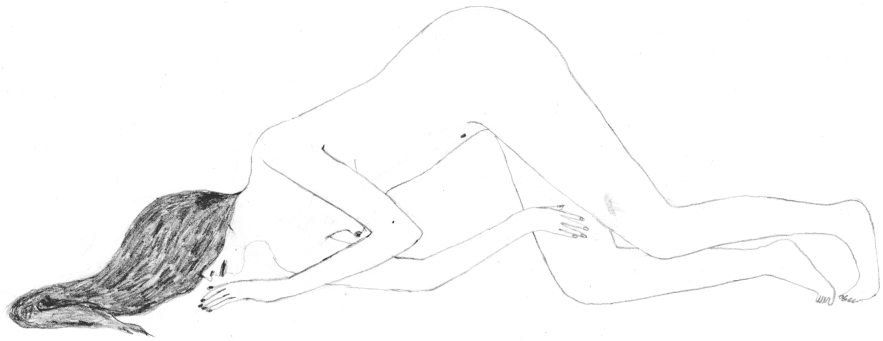
Elizabeth Jaeger has held one and two-person exhibitions with Jack Hanley Gallery, New York; And Now, Dallas; and Eli Ping, New York. Jaeger has participated in group exhibitions with MoMA PS1, Long Island City; Marianne Boesky Gallery, New York; Company, New York; Galerie Lefebvre & Fils, Paris; KINMAN, London; Andrew Edlin Gallery, New York; Rod Barton, London; and Loyal, Malmo. Elizabeth Jaeger lives and works in Brooklyn.

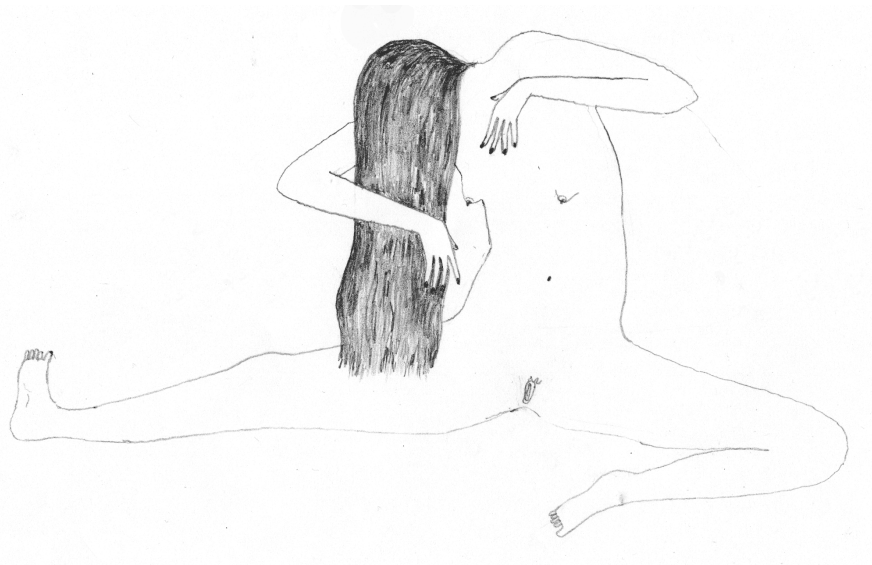
Calvin Marcus has held solo exhibitions with C L E A R I N G, New York; David Kordansky, Los Angeles; Peep-Hole, Milan; and Public Fiction, Los Angeles. Marcus has been included in group exhibitions with 356 S. Mission RD., Los Angeles; White Cube, London; C L E A R I N G, Brussels; and Greene Naftali, New York. Calvin Marcus holds his MFA from UCLA. He lives and works in Los Angeles.

Anna Uddenberg has held solo exhibitions with Vårbergs Dansservice, Stockholm; Dold Projects, St. Georgen, Germany; SL's Konstmonter, Stockholm; and Galleri Mejan, Stockholm. She has exhibited work in group exhibitions with Mitchell Albus Gallery, New York; Artists Space, New York; MEGA Foundation, Stockholm; Sandy Brown, Berlin; M/L ARTSPACE, Venice; Etnografiska Världskultur Muséerna, Stockholm; Kunstmuseum Bonn, and Städelschule, Frankfurt. Anna Uddenberg earned her MA from the Royal Institute of Art. She lives and works in Berlin.

Charlie White has held solo exhibitions with the Los Angeles County Museum of Art, Los Angeles; Domus Artium, Salamanca, Spain; Oslo Kunstforening; the Aldrich Museum of Contemporary Art, Ridgefield; Andrea Rosen Gallery, New York; FA Projects, London; Loock Gallery, Berlin; Brandstrom Gallery, Stockholm; and LAXART, Los Angeles. White has been included in group exhibitions with the Museum for Contemporary Photography, Chicago; the 2011 Singapore Biennial; the Hammer Museum, Los Angeles; the Institute of Contemporary Art, Philadelphia; the Shanghai Museum of Contemporary Art in China; and the Museum of Contemporary Art, Chicago. White's film, *American Minor*, was selected to screen at the 2009 Sundance Film Festival and Director's Fortnight at the Cannes Film Festival. White's work has been discussed in periodicals including The New York Times, Artforum, Frieze, Flash Art, Modern Painters, The New Yorker, Wired, and Lacanian ink. Charlie White received his MFA in 1998 from the Art Center College of Design, Pasadena. Charlie White lives and works in Los Angeles.







Exhibition organized by Matthew Strauss

Illustrations

Elizabeth Jaeger, *Burnt Cream*, 2015; Graphite on paper, 8.5 x 11 inches each

Support

The Andy Warhol Foundation for the Visual Arts

Lenders

Kelly Akashi courtesy the artist and Michael Jon Gallery, Miami

Elizabeth Jaeger courtesy the artist and Jack Hanley Gallery, New York

Calvin Marcus courtesy the artist, C-L-E-A-R-I-N-G, Brussels/New York, and David Kordansky Gallery, Los Angeles

Anna Uddenberg courtesy the artist, Sandy Brown, Berlin, and Mitchell Albus Gallery, New York

Charlie White courtesy the artist and François Ghebaly, Los Angeles

White Flag Projects

Matthew Strauss  
*Founder & Director*

Marie Heilich  
*Assistant Director*

Tim Young  
*Installation Manager*

Jane Fitzimmons, Ilethia Sharp, Carla Steppan  
*Interns*

WHITE FLAG PROJECTS  
4568 Manchester Avenue  
Saint Louis, Missouri 63110

[www.whiteflagprojects.org](http://www.whiteflagprojects.org)

