

**MEETING AGENDA**

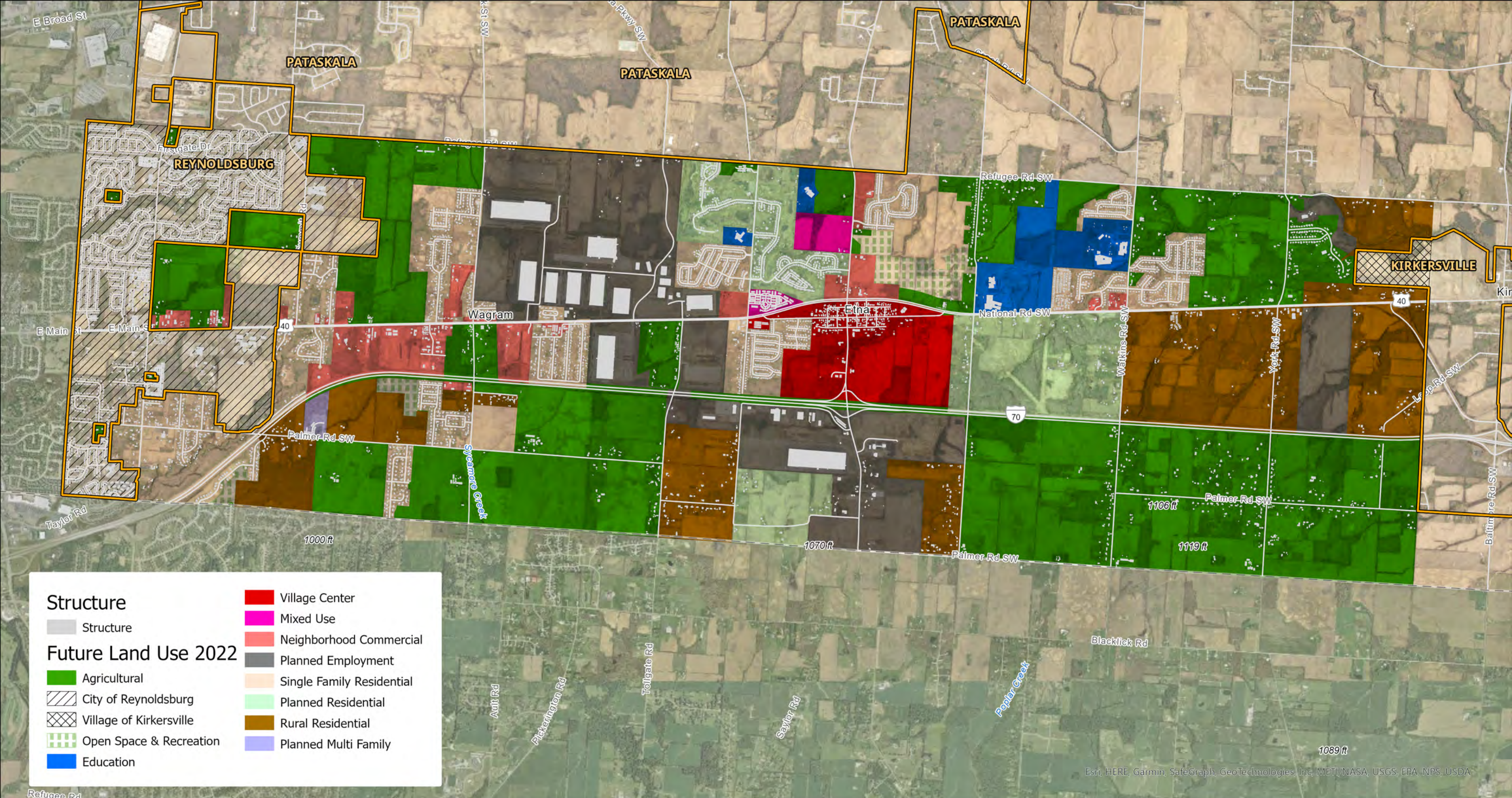
Community Advisory Committee #6

November 09, 2022 @ 6:00pm

Etna Township Building

---

1. Welcome & Introductions
2. October Meeting Recap
3. Community Survey Update
4. Future Lane Use Draft Discussion
5. Adjourn



<b>Structure</b>	Village Center
Structure	Mixed Use
<b>Future Land Use 2022</b>	Neighborhood Commercial
Agricultural	Planned Employment
City of Reynoldsburg	Single Family Residential
Village of Kirkersville	Planned Residential
Open Space & Recreation	Rural Residential
Education	Planned Multi Family

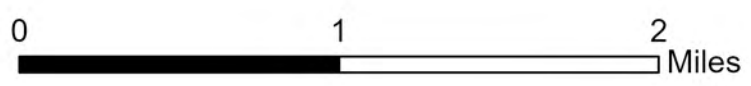
Esri, HERE, Garmin, SafeGraph, GeoTechnologies, Inc, METI, NASA, USGS, EPA, NPS, USDA

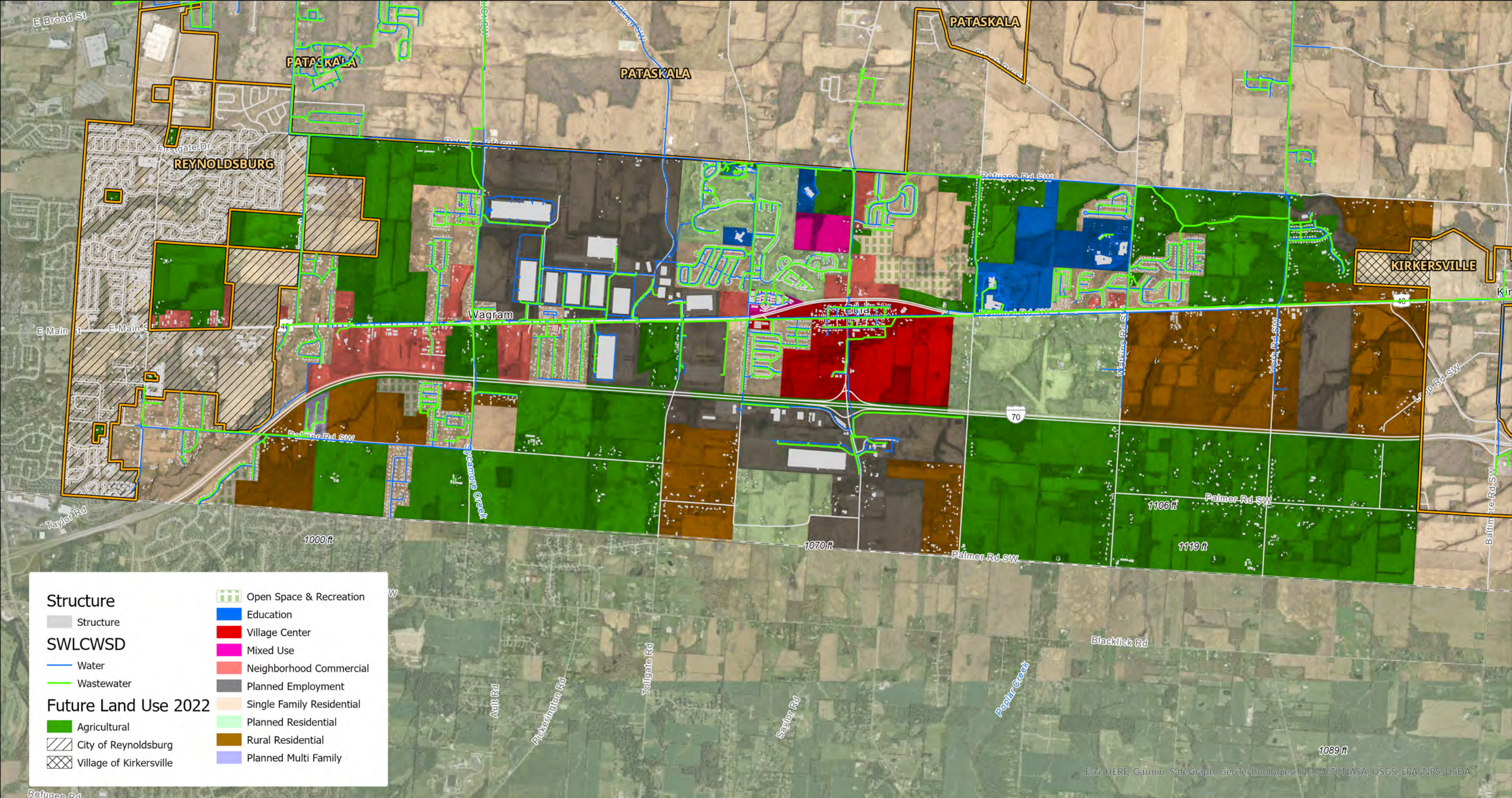
November 09, 2022



## PROPOSED FUTURE LAND USE

Data Sources: Licking County Auditor, Neighborhood Strategies, ODOT TIMS



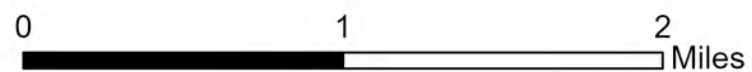


November 09, 2022

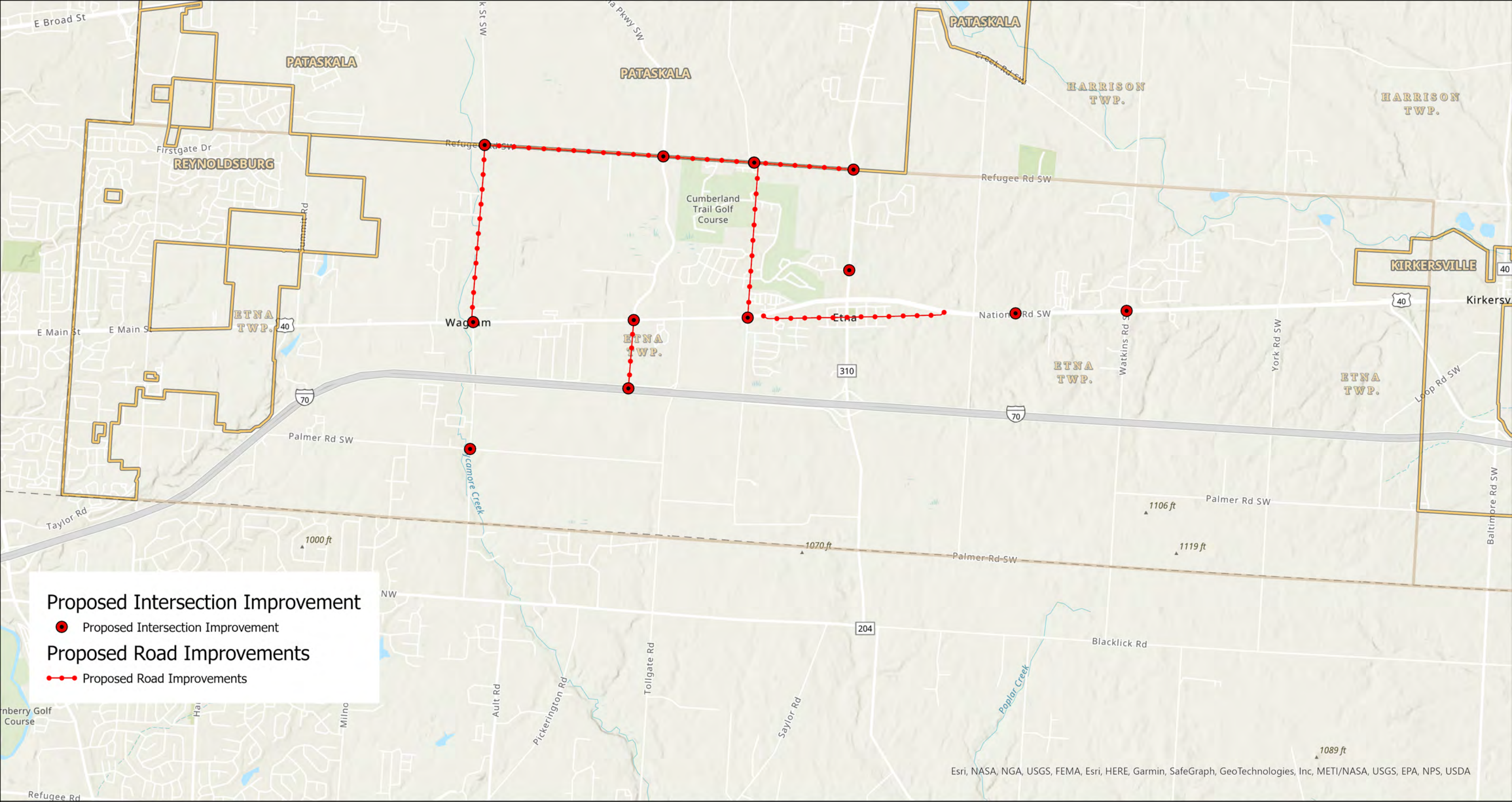


## PROPOSED FUTURE LAND USE

Data Sources: Licking County Auditor, Neighborhood Strategies, ODOT TMS



Esri, HERE, Garmin, SafeGraph, GeoTechnologies, Inc, METI, NASA, USGS, EPA, NPS, USDA



**Proposed Intersection Improvement**  
 ● Proposed Intersection Improvement

**Proposed Road Improvements**  
 - - - Proposed Road Improvements

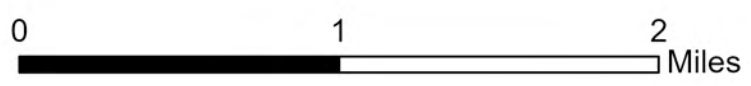
Esri, NASA, NGA, USGS, FEMA, Esri, HERE, Garmin, SafeGraph, GeoTechnologies, Inc, METI/NASA, USGS, EPA, NPS, USDA

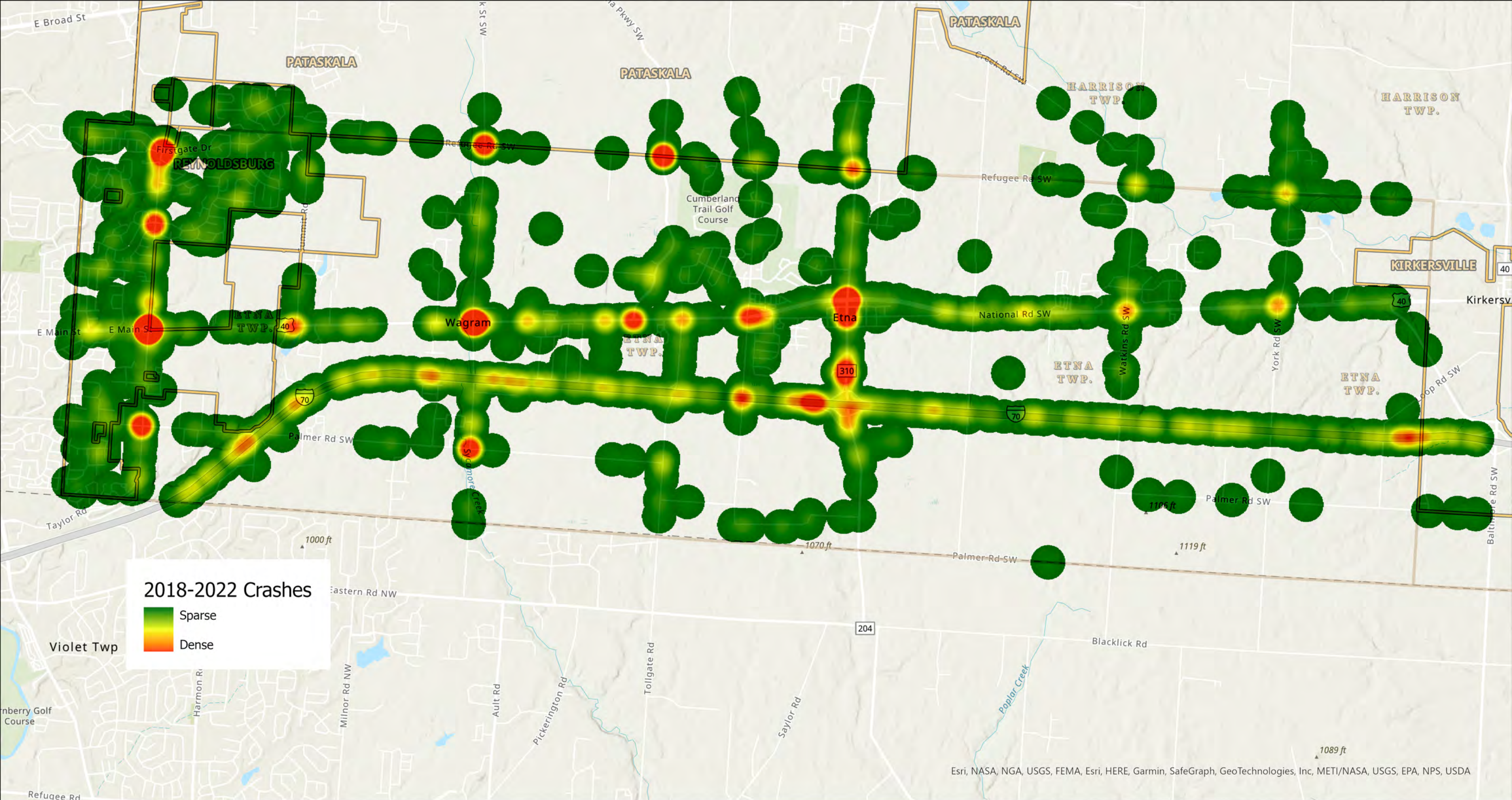
November 09, 2022



# PROPOSED SURFACE TRANSPORTATION IMPROVEMENTS

Data Sources: Licking County Auditor, Neighborhood Strategies, ODOT TIMS





November 09, 2022



## 2018 - 2022 TRAFFIC CRASH HEAT MAP

Data Sources: Licking County Auditor, Neighborhood Strategies, ODOT TIMS

