

PLEASANT VIEW

PV

lakeside efficiency



- ↑ Efficiency; 11 (downstairs): 5 rooms,
21 (upstairs): 4 rooms
- 🕒 Located on the lake between Mesa and
Islotta
- 🚿 2 bathrooms with tub/shower combo

- ✚ Efficiency unit with kitchen including a stove,
microwave, refrigerator, and toaster oven, also
has washer/dryer and screened porch
- 🔥 All units have fire pits
- ♿ Not handicap accessible

Beds & Capacity by Unit

	Unit #	11	21
Beds	Twin	4	4
	Bunk		
	Trundle		
	Queen		
	King	1	1
Capacity	Minimum	2	2
	Normal	6	6
	Maximum	8	8

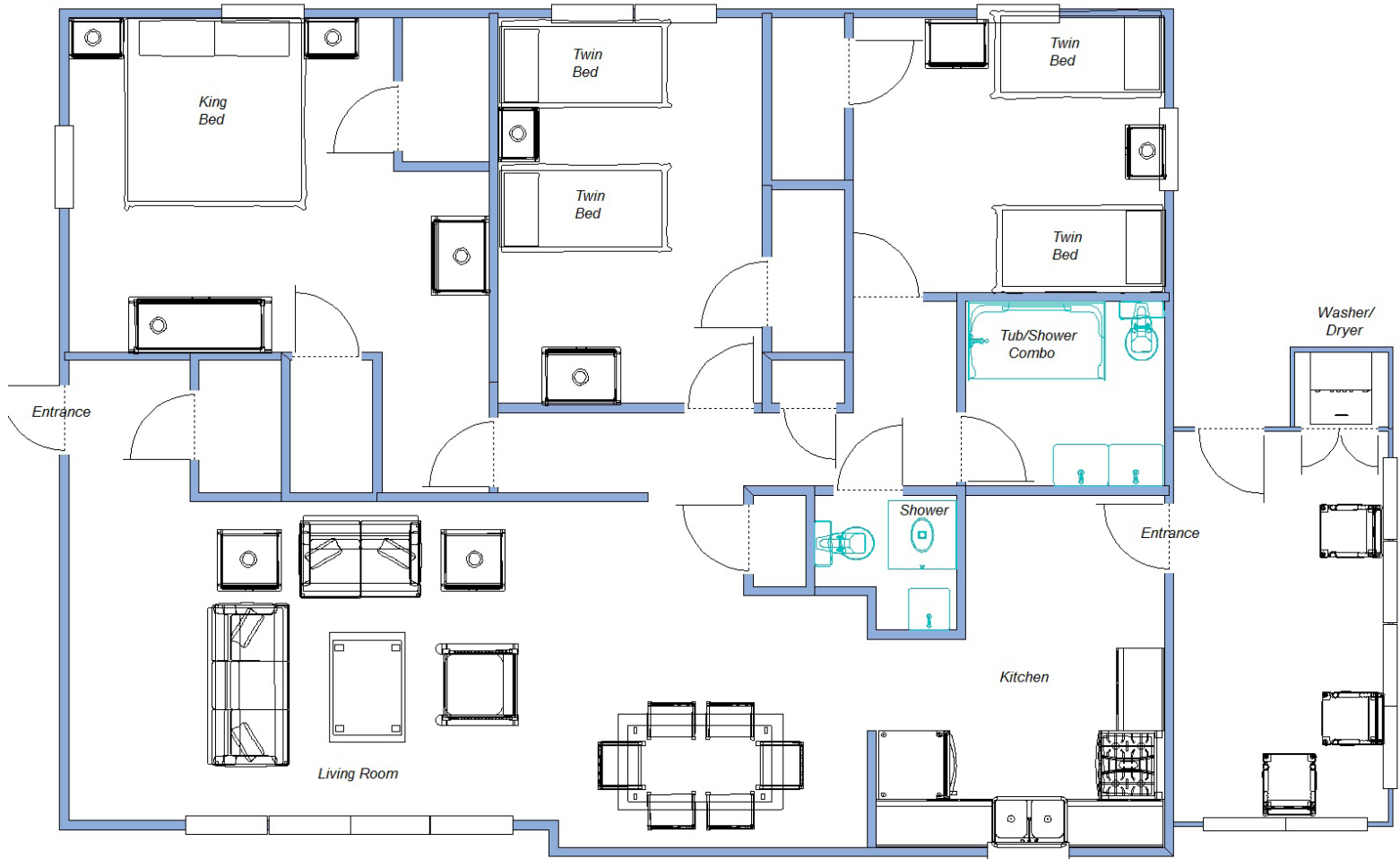
Summer 2024 Pricing

Includes maid service but NO MEALS. Optional meal plans in either dining room available. Gratuities for Housekeepers not included. No single occupancy.

11	Weeks 1, 8, & 9	\$4,536.00 per week	\$238.00 per week, per person over 6 occupants
	Weeks 2, 3, & 7	\$4,879.00 per week	\$238.00 per week, per person over 6 occupants
	Weeks 4, 5, & 6	\$5,043.50 per week	\$238.00 per week, per person over 6 occupants
21	Weeks 1, 8, & 9	\$3,668.00 per week	\$238.00 per week, per person over 6 occupants
	Weeks 2, 3, & 7	\$3,955.00 per week	\$238.00 per week, per person over 6 occupants
	Weeks 4, 5, & 6	\$4,088.00 per week	\$238.00 per week, per person over 6 occupants

PLEASANT VIEW

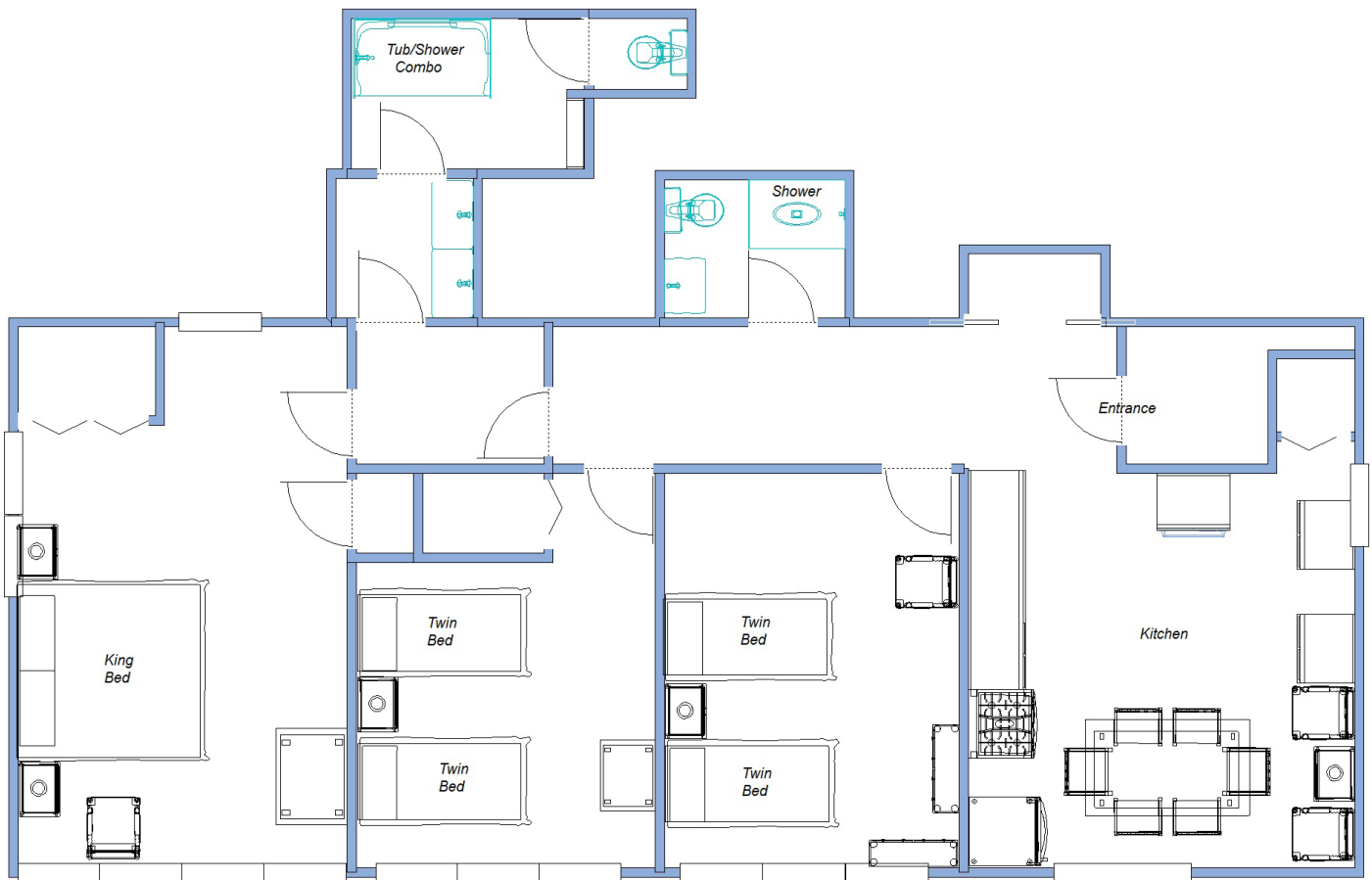
Unit 11
Approximately 1,323 square feet



Lake Pleasant

PLEASANT VIEW

Unit 21
Approximately 1,580 square feet



Lake Pleasant