

CHIPPEWA C, E, G, & H CP

lakeside efficiency



- 🏠 8 Cabins; C, G, & H: 2 rooms,
E: 3 rooms, 2nd floor unit
- 📍 Located along the lake near the point
- 🚻 Bathroom with tub/shower combo

- ✚ Efficiencies including a full kitchen with stove,
microwave, refrigerator, and toaster oven
- 🔥 All units have fire pits
- ♿ No handicap rooms

Chippewa: Beds & Capacity by Unit

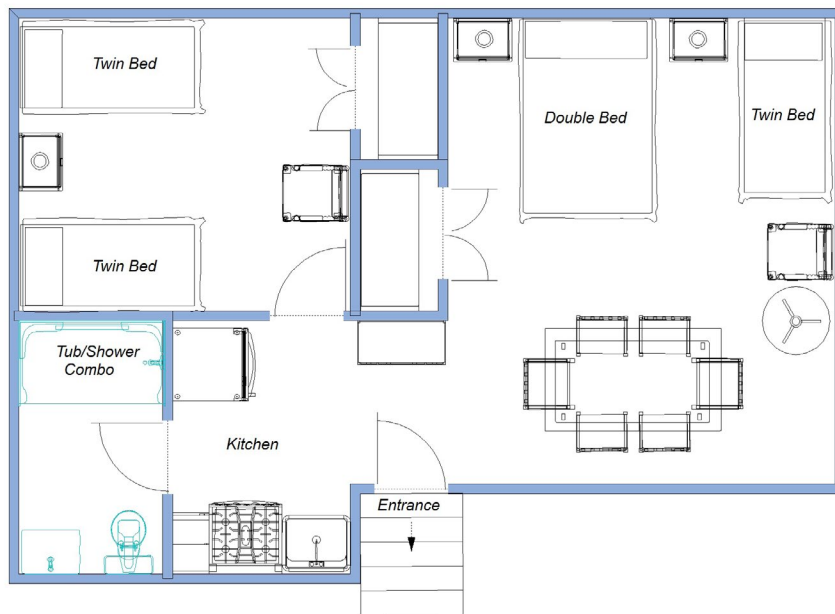
Units C, F, & H: 2 twin beds can be converted into a king bed upon prior notice.

	Unit	C	E	G	H
Beds	Twin	3	1	2	2
	Bunk		1		
	Double	1	2	1	
	Queen				1
Maximum Occupancy		5	8	5	5

Chippewa: Floor Plans

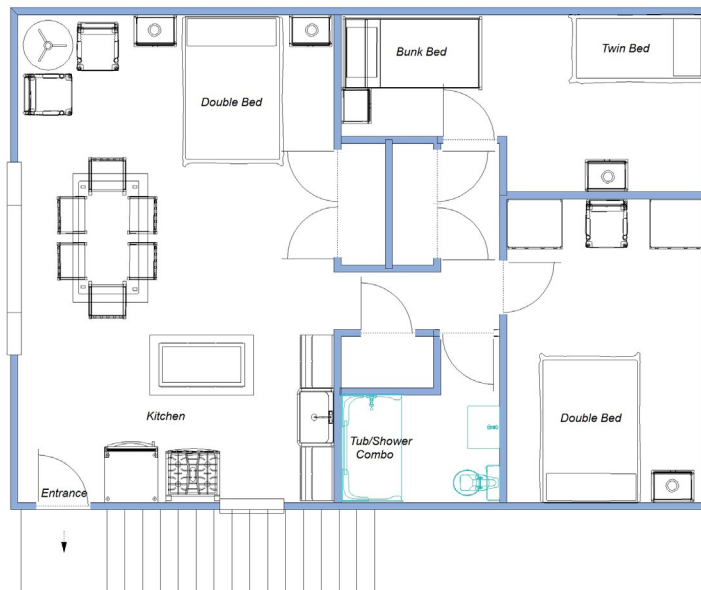
Unit C

Approximately 447 square feet



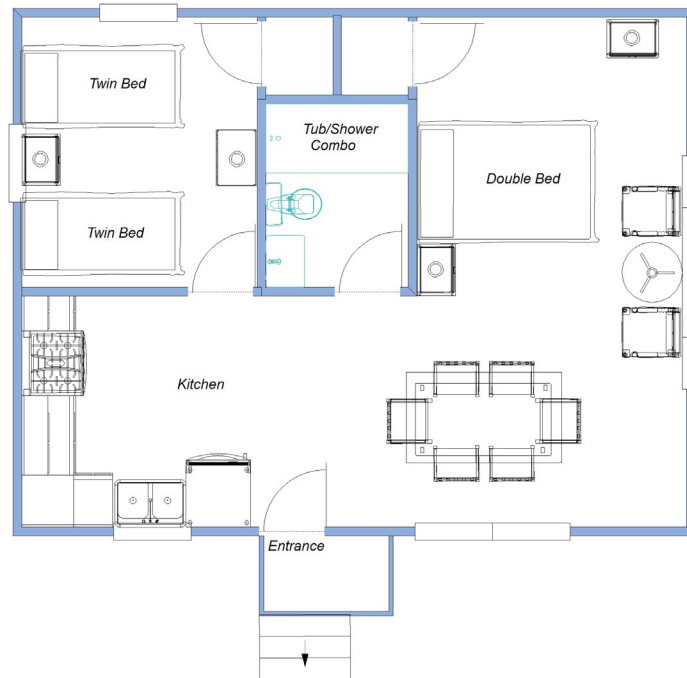
Unit E: Upstairs

Approximately 730 square feet



Chippewa: Floor Plans

Unit G
Approximately 500 square feet



Unit H
Approximately 500 square feet

