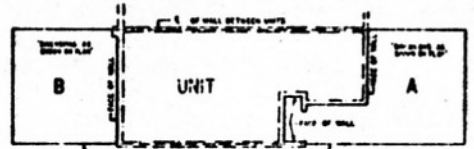
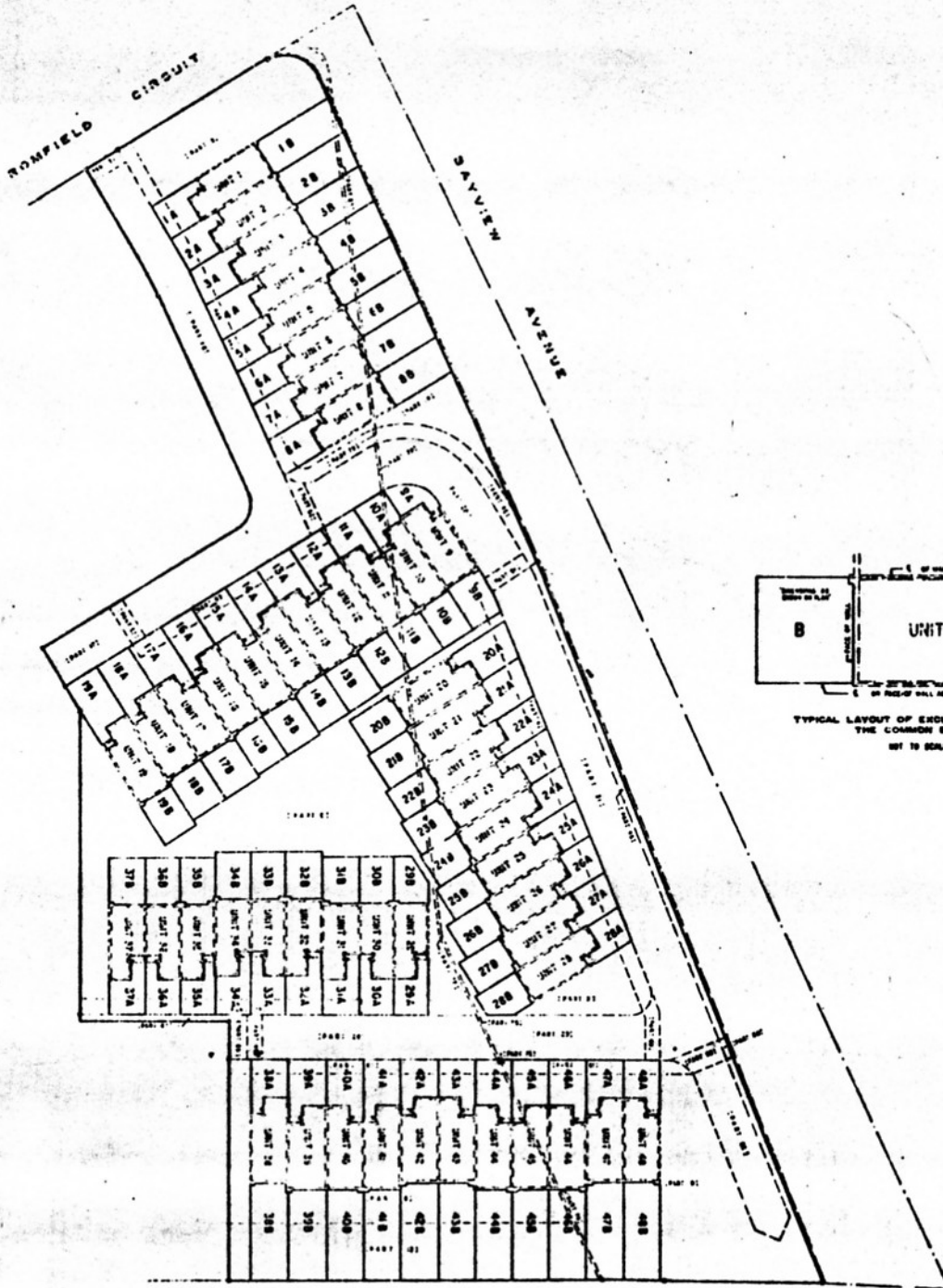


PLAN SHOWING EXCLUSIVE USE PORTIONS  
OF THE COMMON ELEMENT

SCALE 1" = 30'

H. J. ROESTER LIMITED  
ONTARIO LAND SURVEYORS  
1977



TYPICAL LAYOUT OF EXCLUSIVE USE PORTIONS  
OF THE COMMON ELEMENT  
NOT TO SCALE

**NOTES:**  
 PORTIONS OF THE COMMON ELEMENT IDENTIFIED TO AND (WITH OFFICES A OR B) ARE RELEGATED FOR EXCLUSIVE USE AND POSSESSION OF THE OWNER OF THE UNIT OF THE SAME NUMBER.  
 - - - - - IDENTIFIED UNIT BOUNDARY  
 - - - - - BOUNDARIES OF THE EXCLUSIVE USE PORTIONS OF THE COMMON ELEMENT  
 O - FOUND STRONGER THAN 60' (1" = 30' SCALE)  
 O - FOUND WITHIN 60' (1" = 30' SCALE)  
 O - DITCHES  
 PARTS SHOWN THIS (PART 2) REFER TO PLAN 948-0507

**SURVEYOR'S CERTIFICATE**  
 I HEREBY CERTIFY THAT THIS PLAN ACCURATELY SHOWS THE EXTENT AND LOCATION OF THE EXCLUSIVE USE PORTIONS OF THE COMMON ELEMENT.  
 DATE: MARCH 3, 1977  
 H. J. ROESTER LIMITED  
 ONTARIO LAND SURVEYORS  
 2200 SHEPPARD AVENUE EAST  
 SUITE 102, SCARBOROUGH, ONTARIO  
 PHONE: 492-0506

CANADIAN NATIONAL RAILWAYS