

APPENDIX B – PERMITTED FACILITIES

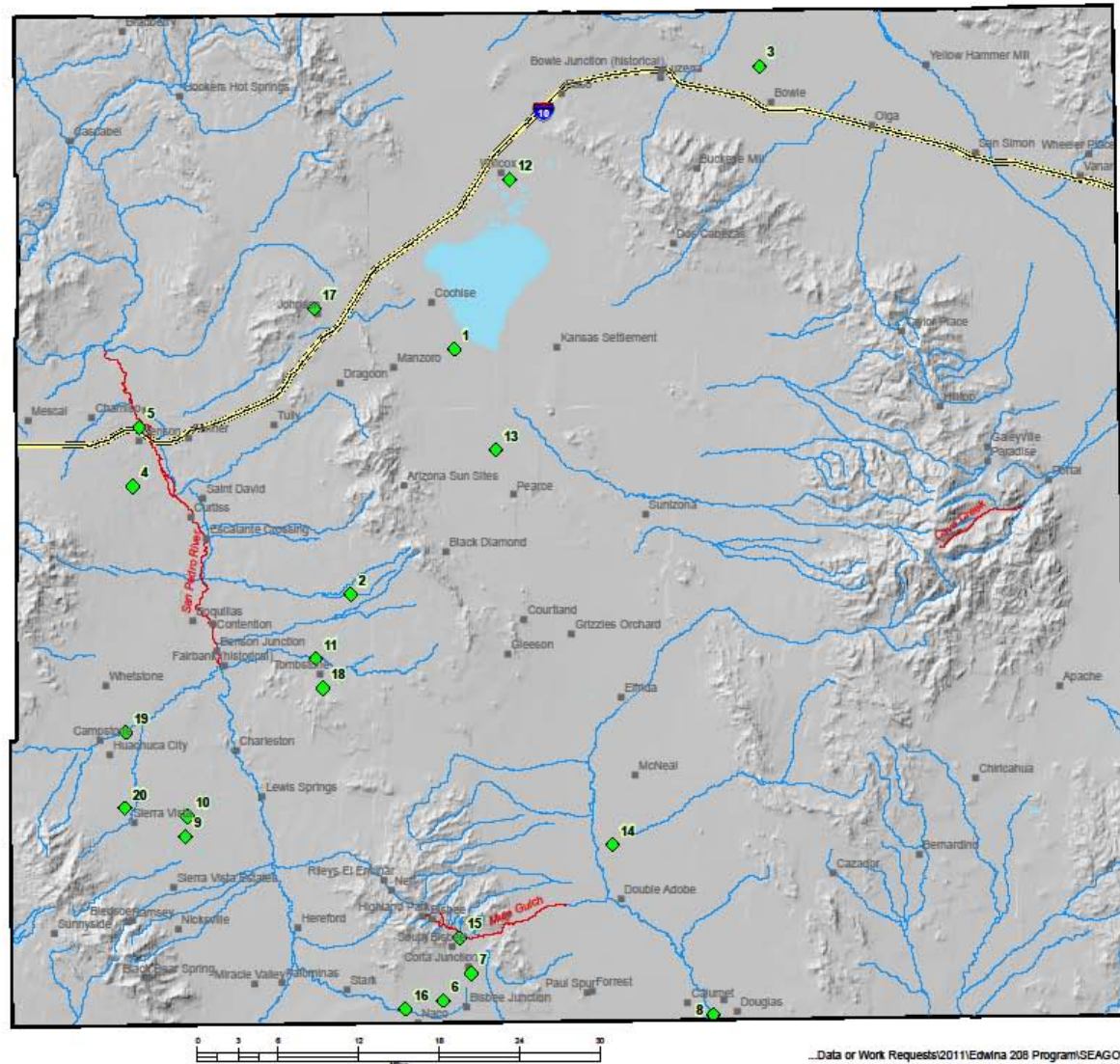
MAP ID	FAC ID	FACILITY NAME	CITY	COUNTY	DESCRIPTION	APP Permit No.	AZPDES Permit No.	Type 2 Class Type	Type 3 Permit Type
A	1	ARIZONA ELECTRIC POWER COOP - APACHE GENERA	COCHISE	COCHISE	POWER PLANT	101494			
A	2	BACHMANN SPRINGS WWTP	TOMBSTONE	COCHISE	WATER TREATMENT PLANT	105755			
A	3	BOWIE POWER STATION	BOWIE	COCHISE	POWER PLANT	502603			
A	4	CITY OF BENSON - WHETSTONE RANCH WRF	BENSON	COCHISE	WWTP (DOMESTIC)	105502			
A	5	CITY OF BENSON WWTP	BENSON	COCHISE	WWTP (DOMESTIC)	100829	AZ0024376	B+	
A	6	CITY OF BISBEE - SAN JOSE WWTP	BISBEE	COCHISE	WWTP (DOMESTIC)	100983	AZ0025275		Agent
A	7	CITY OF BISBEE - WARREN WWTP	BISBEE	COCHISE	WWTP (DOMESTIC)	100985			
A	8	CITY OF DOUGLAS WWTP	DOUGLAS	COCHISE	WWTP (DOMESTIC)	100831			
A	9	CITY OF SIERRA VISTA - TRIBUTE WWTP	SIERRA VISTA	COCHISE	WWTP (DOMESTIC)	106122	AZ0025984		
A	10	CITY OF SIERRA VISTA WWTP	SIERRA VISTA	COCHISE	WWTP (DOMESTIC)	101489			
A	11	CITY OF TOMBSTONE WWTP	TOMBSTONE	COCHISE	WWTP (DOMESTIC)	100834	AZ0025577		
A	12	CITY OF WILLCOX WWTP	WILCOX	COCHISE	WWTP (DOMESTIC)	102778	AZ0025771		
A	13	CLEAR SPRINGS UTILITIES - SUNSITES WWTP	SUNSITES	COCHISE	WWTP (DOMESTIC)	100824			
A	14	FIESTA CANNING	MCNEAL	COCHISE	AGRICULTURE	103708			
A	15	FREEPORT-MCMORAN WARREN-MULE GULCH	BISBEE	COCHISE	MINING	103568			
A	16	NACO SANITARY DISTRICT WWTP	NACO	COCHISE	WWTP (DOMESTIC)	100833			
A	17	NORD RESOURCES CORP - JOHNSON CAMP MINE	DRAGOON	COCHISE	MINING	100514			
A	18	TOMBSTONE CONTENTION MINE	TOMBSTONE	COCHISE	MINING	102806			
A	19	TOWN OF HUACHUCA CITY SEWER PONDS	HUACHUCA CITY	COCHISE	WWTP (DOMESTIC)	100832			
A	20	US ARMY - FORT HUACHUCA WWTP	SIERRA VISTA	COCHISE	WWTP (DOMESTIC)	100840		B+	
B	21	ARIZONA STATE PRISON COMPLEX - FT GRANT	FORT GRANT	GRAHAM	WWTP (DOMESTIC)	102341			
B	22	ARIZONA STATE PRISON COMPLEX - SAFFORD	SAFFORD	GRAHAM	WWTP (DOMESTIC)	100292		C	
B	23	CITY OF SAFFORD - GILA RESOURCES WRP	SAFFORD	GRAHAM	WWTP (DOMESTIC)	100806	AZ0024911	A+	Agent
B	24	FREEPORT-MCMORAN SAFFORD MINE	SAFFORD	GRAHAM	MINING	100534			
B	25	TOWN OF PIMA WWTP	PIMA	GRAHAM	WWTP (DOMESTIC)	100805		C	
B	26	TOWN OF THATCHER WWTP	THATCHER	GRAHAM	WWTP (DOMESTIC)	100807		C	Agent
C	27	FREEPORT-MCMORAN MORENCI MINE	MORENCI	GREENLEE	MINING	100193			
C	28	TOWN OF CLIFTON WWTP	CLIFTON	GREENLEE	WWTP (DOMESTIC)	100973			
C	29	TOWN OF DUNCAN WWTP	DUNCAN	GREENLEE	WWTP (DOMESTIC)	101558			
D	30	BARRIO DE TUBAC WWTP	TUBAC	SANTA CRUZ	WWTP (DOMESTIC)	102959			
D	31	CONN-SELMER (previously United Musical Instruments)	NOGALES	SANTA CRUZ	INDUSTRIAL	100311			
D	32	KINO SPRINGS UNIT #1 WWTP	NOGALES	SANTA CRUZ	WWTP (DOMESTIC)	501319			
D	33	IBWC/NOGALES INTERNATIONAL WWTP	NOGALES	SANTA CRUZ	WWTP (DOMESTIC)	100620	AZ0025607		
D	34	RIO RICO WWTP	RIO RICO	SANTA CRUZ	WWTP (DOMESTIC)	101731			
D	35	TOWN OF PATAGONIA WWTP	PATAGONIA	SANTA CRUZ	WWTP (DOMESTIC)	105267			

COCHISE COUNTY PERMITTED FACILITIES
Map A

- ◆ Permitted Facilities
- Cities / Towns
- Streams
- Impaired Streams
- Interstate
- ▣ Indian Reservations

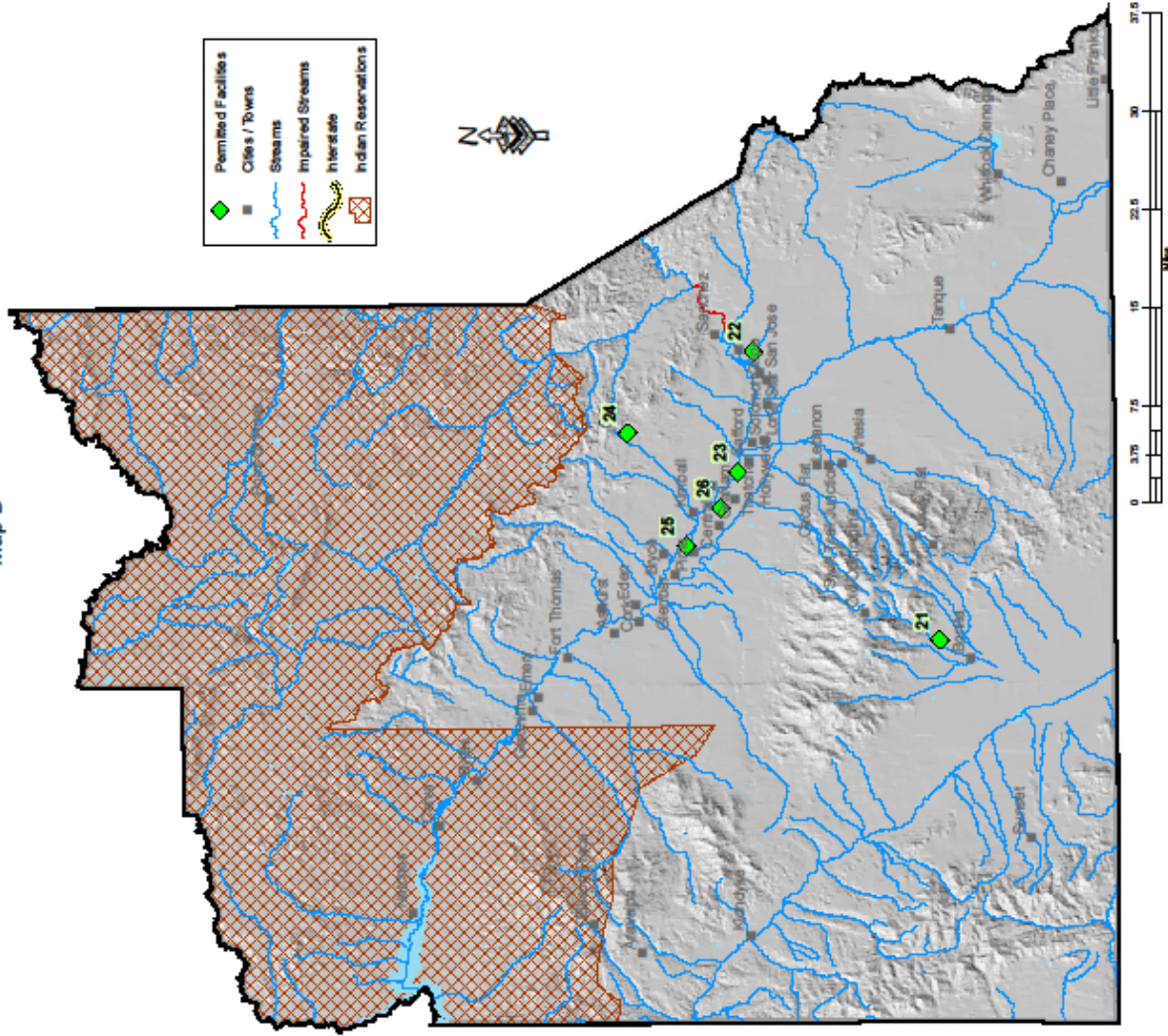


This map is for general reference only and may not be all inclusive. ADEQ program's data collection efforts are ongoing. More detailed information and specific locations can be obtained by contacting the Arizona Department of Environmental Quality.



...Data or Work Requests(2011)Edwina 208 Program(SEAGO)seago_cochise.mxd

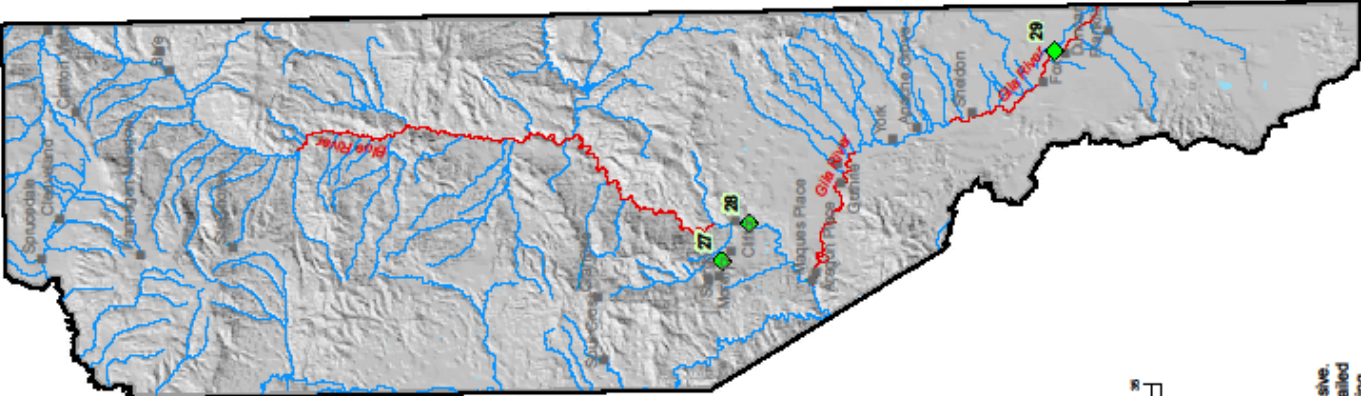
GRAHAM COUNTY PERMITTED FACILITIES
Map B



This map is for general reference only and may not be all inclusive. ADEQ program's data collection efforts are ongoing. More detailed information and specific locations can be obtained by contacting the Arizona Department of Environmental Quality.

...Data or Work Requests\2011\Edwin 208 Program\SE-AGO\seago_graham.mxd

GREENLEE COUNTY
PERMITTED FACILITIES
Map C

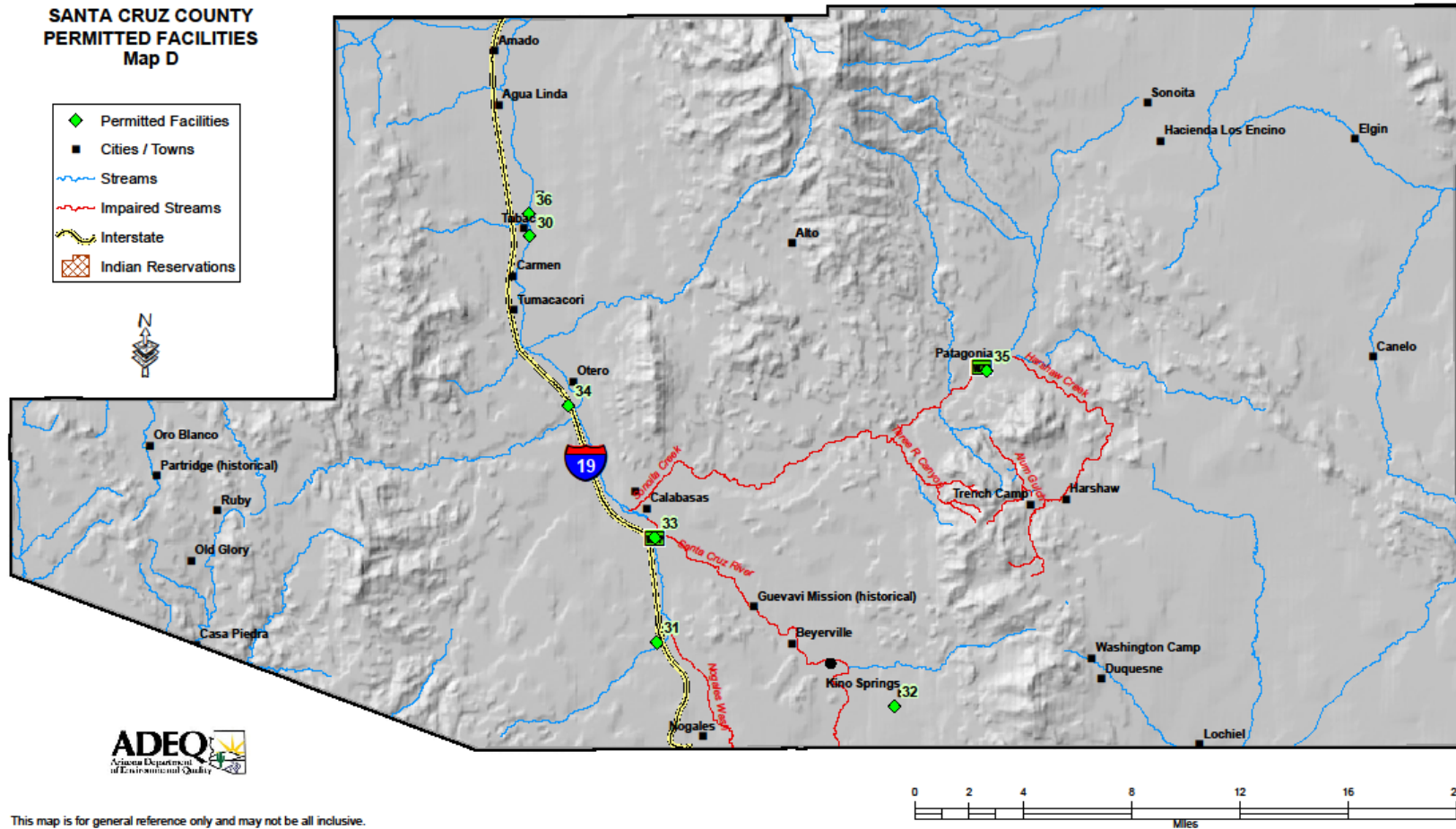


	Permitted Facilities
	Cities / Towns
	Streams
	Impaired Streams
	Interstate
	Indian Reservations



This map is for general reference only and may not be all inclusive. ADEQ program's data collection efforts are ongoing. More detailed information and specific locations can be obtained by contacting the Arizona Department of Environmental Quality.

...Data or Work Requests\2011E.dwna_208 Program\SEAGO\seago_greenlee.mxd



This map is for general reference only and may not be all inclusive. ADEQ program's data collection efforts are ongoing. More detailed information and specific locations can be obtained by contacting the Arizona Department of Environmental Quality.

...Data or Work Requests\2011\Edwina 208 Program\SEAGO\seago_santacruz.mxd

APPENDIX B - EXISTING DOMESTIC WASTEWATER TREATMENT PLANTS AND PERMITS

MUNICIPAL WASTEWATER TREATMENT FACILITIES - SEAGO REGION							
Map Number	Facility name	Owner	Facility Type	Design Capacity (gpd)	Current Avg. Flow (gpd)	Last Modification (year)	Planned Expansion / Modification (year)
COCHISE COUNTY							
BENSON							
A	Benson WWTP	City of Benson	activated sludge/aeration	1.2 million	380,000-500,000	WWTP rebuilt (2002); Whetstone Ranch Hookup (2008)	None Planned
BISBEE							
A	Bisbee/San Jose WWTP	City of Bisbee	single batch reactor	1.22 million	400,000	San Jose Plant opened 2009; Old Mule Gultch Plant now a lift station and influent storage facility; Warren lagoons closed	Negotiations for hooking in Naco Hwy Border Patrol station underway; Tin Town and San Jose hookups anticipated
DOUGLAS							
A	Douglas WWTP	City of Douglas	activated sludge/aeration	2 million	1.8 million	Under consent order to upgrade to 2.6 million gpd and repair plant by July 2011	Securing funding for major upgrade and repair; WWTP needs expected to increase to 4.6M gpd by 2030
FORT HUACHUCA							
A	WWTP#2	US Army; Fort Huachuca	oxidation ditch; dewatering and treated effluent recharge system	2 million	829,000	WWTP upgrade (2002); addition of oxidation ditch; Huachuca City conveyance system 2009-11	None Planned

Map Number	Facility name	Owner	Facility Type	Design Capacity (gpd)	Current Avg. Flow (gpd)	Last Modification (year)	Planned Expansion / Modification (year)
HUACHUCA CITY							
A	No Plant-Storage Pond system	Huachuca City	N/A	N/A	220,000	Huachuca City to Fort Huachuca sewage conveyance system 2009-12	Continued Conveyance to Fort Huachuca Plant #3
NACO							
A	Naco WWTP	Naco Water District	oxidation lagoons	60,000	600,000	Built 1975 for a larger projected population; generally in good working order	Facility is underutilized; no plans for expansion or connection with Naco, Sonora
SIERRA VISTA							
A	Sierra Vista Environmental Operations Park	City of Sierra Vista	tertiary treatment/recharge	4 million	3.0 million	New Facility constructed 2009	Adequate for anticipated flows through 2030
TOMBSTONE							
A	Tombstone WWTP	City of Tombstone	oxidation ditch and clarifiers	N/A	255,000	unknown	Second oxidation ditch is planned
WILLCOX							
A	Willcox WWTP	City of Willcox	facultative lagoon	681,000	283,000	Built 1959; enlarged 1967 & 1969	Closure of the north lagoon/construction of oxidation ditch increasing capacity to .800 MGD
GRAHAM COUNTY							
PIMA							
B	Pima WWTP	Town of Pima	Single lagoon	130,000	36,000	Built 1930s; lift station added 2005	Replacement/Upgrade funding being sought from WIFA and USDA

Map Number	Facility name	Owner	Facility Type	Design Capacity (gpd)	Current Avg. Flow (gpd)	Last Modification (year)	Planned Expansion / Modification (year)
SAFFORD							
B	Safford Prison Department of Corrections WWTF	AZ Dept. of Corrections	oxidation lagoons	457,000	121,000	unknown	No plans on record
B	Safford WWTP	City of Safford	Oxidation ditches with nitrification/denitrification and clarifiers	2 million	900,000 - 1 million	Built in 2001	None Planned; plant running at 50% capacity
THATCHER							
B	Thatcher WWTP	Town of Thatcher	Aeriated lagoons with wetland	800,000	435,000	Built 1998; replaced old Daley Estates and Reay Lane WWTPs	Collection system expansion funding being sought from WIFA
GREENLEE COUNTY							
CLIFTON							
C	Clifton WWTP	Town of Clifton	Watercourse; Secondary treatment	268,000	80,000	Built 1930s; lift station added 2005	Replacement/Upgrade funding being sought from WIFA and USDA
DUNCAN							
C	Duncan WWTP	Town of Duncan	Evaporation Pond; Secondary treatment	80,000	39,900	Built in 1950s; upgraded in 1980s	No plans on record

Map Number	Facility name	Owner	Facility Type	Design Capacity (gpd)	Current Avg. Flow (gpd)	Last Modification (year)	Planned Expansion / Modification (year)
SANTA CRUZ COUNTY							
PATAGONIA							
D	Patagonia WWTP	Town of Patagonia	Anoxic tack with denitrification, aeration basins, chlorination / dechlorination	110,000	60,000	New Facility brought online 2005	In compliance with no future upgrades planned at this time
NOGALES							
D	Nogales International WWTP	City of Nogales & International Boundary and Water Commission	Activated sludge/oxidation ditches	17.2 million Expandable to 20 million	15.75 million	Opened June 2009	Serves both Nogales AZ and Nogales, Sonora. No planned upgrades at present