

# ANITA ROGERS GALLERY

## MARK ROTHKO AND WILLIAM SCOTT: CONTINUING THE DIALOGUE



William Scott CBE RA  
1. *Abstract (Blue East)*, 1964  
Oil on canvas  
73h x 48w in  
185.42h x 121.92w cm



Mark Rothko  
2. *Untitled (Red, Yellow, Blue, Black and White)*, 1950  
Oil on canvas  
67 1/2h x 38 1/4w in  
171.45h x 97.16w cm



Mark Rothko  
3. *Untitled*, 1959  
Paper mounted on canvas  
38 1/4h x 25 1/4w in  
97.16h x 64.14w cm



Mark Rothko  
4. *No.20*, 1949  
Oil on canvas  
56h x 48w in  
142.24h x 121.92w cm



William Scott CBE RA  
5. *Still Life*, 1957  
Oil on canvas  
48h x 60w in  
121.92h x 152.40w cm

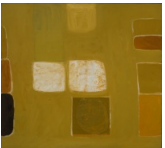
# ANITA ROGERS GALLERY



William Scott CBE RA  
*6. Blue and Black Painting, 1959*  
Oil on canvas  
40h x 50w in  
101.60h x 127w cm



William Scott CBE RA  
*7. Diminishing Forms Green, 1971*  
Oil on canvas  
100h x 80w in  
254h x 203.20w cm



William Scott CBE RA  
*8. Abstract Orange, 1963*  
Oil on canvas  
60h x 66w in  
152.40h x 167.64w cm



Mark Rothko  
*9. Personage, 1946*  
Oil on canvas  
52h x 28 1/4w in  
132.08h x 71.76w cm



William Scott CBE RA  
*10. White, Blue and Brown, 1960*  
Oil on canvas  
63h x 68w in  
160.02h x 172.72w cm



William Scott CBE RA  
*11. Untitled study for Altnagelvin mural, c. 1959*  
Gouache and collage on paper  
8 2/3h x 46w in  
22.01h x 116.84w cm

# ANITA ROGERS GALLERY



William Scott CBE RA  
*12. Untitled study for Altnagelvin mural, c. 1959*  
Gouache and collage on paper  
9 1/4h x 46w in  
23.50h x 116.84w cm



William Scott CBE RA  
*13. Untitled study for Altnagelvin mural, c. 1959*  
Gouache and collage on paper  
8 2/3h x 45 1/4w in  
22.01h x 114.94w cm



Mark Rothko  
*14. Seagram Mural Study, c. 1958*  
Tempera on paper  
29 15/16h x 21 15/16w in  
76.04h x 55.72w cm



Mark Rothko  
*15. Seagram Mural Study, c. 1959*  
Tempera on paper  
24 1/16h x 38 1/16w in  
61.12h x 96.68w cm



Mark Rothko  
*16. Seagram Mural Study, c. 1958*  
Tempera on paper (gouache on paper)  
24 15/16h x 38 1/16w in  
63.34h x 96.68w cm



Mark Rothko  
*17. Seagram Mural Study, c. 1958*  
Tempera on paper  
29 1/2h x 21 3/4w in  
74.93h x 55.25w cm



Mark Rothko  
*18. Seagram Mural Study (Four Barred Gate), 1958*  
Watercolor and oil on watercolor paper  
23 15/16h x 18 13/16w in  
60.80h x 47.78w cm

# ANITA ROGERS GALLERY



William Scott CBE RA

19. *Still Life*, 1957-8

Oil on canvas

26h x 36 1/2w in

66.04h x 92.71w cm