



**ADDENDUM TO BID DOCUMENTS**

<b>SOLICITATION</b>	<b>ITB No. B-17-144 Community Room AC Replacement at Police Department</b>				
<b>ADDENDUM No.</b>	<b>1</b>	<b>BID OPENING DATE</b>	<b>06/15/17 at 2:00 PM</b>	<b>TODAY'S DATE</b>	<b>6/7/2017</b>

To All Bidders:

This addendum is issued to modify the previously issued bid documents and/or given for informational purposes, and is hereby made a part of the bid documents. Please attach this addendum to the documents in your possession and acknowledge receipt of this addendum in the space provided on the bid form.

**Clarification:**

1. The Bid Deadline & Submittal Information has been updated as follows (strikethrough indicates deleted language and underlined indicates added language):

**Bid Deadline & Submittal Information**

Attention: Procurement Manager, Brian K. O'Connor, Town of Davie, Purchasing, 6591 Orange Drive, Town of Davie, FL 33314.

Time: 2:00 PM

Date: ~~Friday, June 9, 2017~~ Thursday, June 15, 2017

Location: Purchasing Division

**Page Addition:**

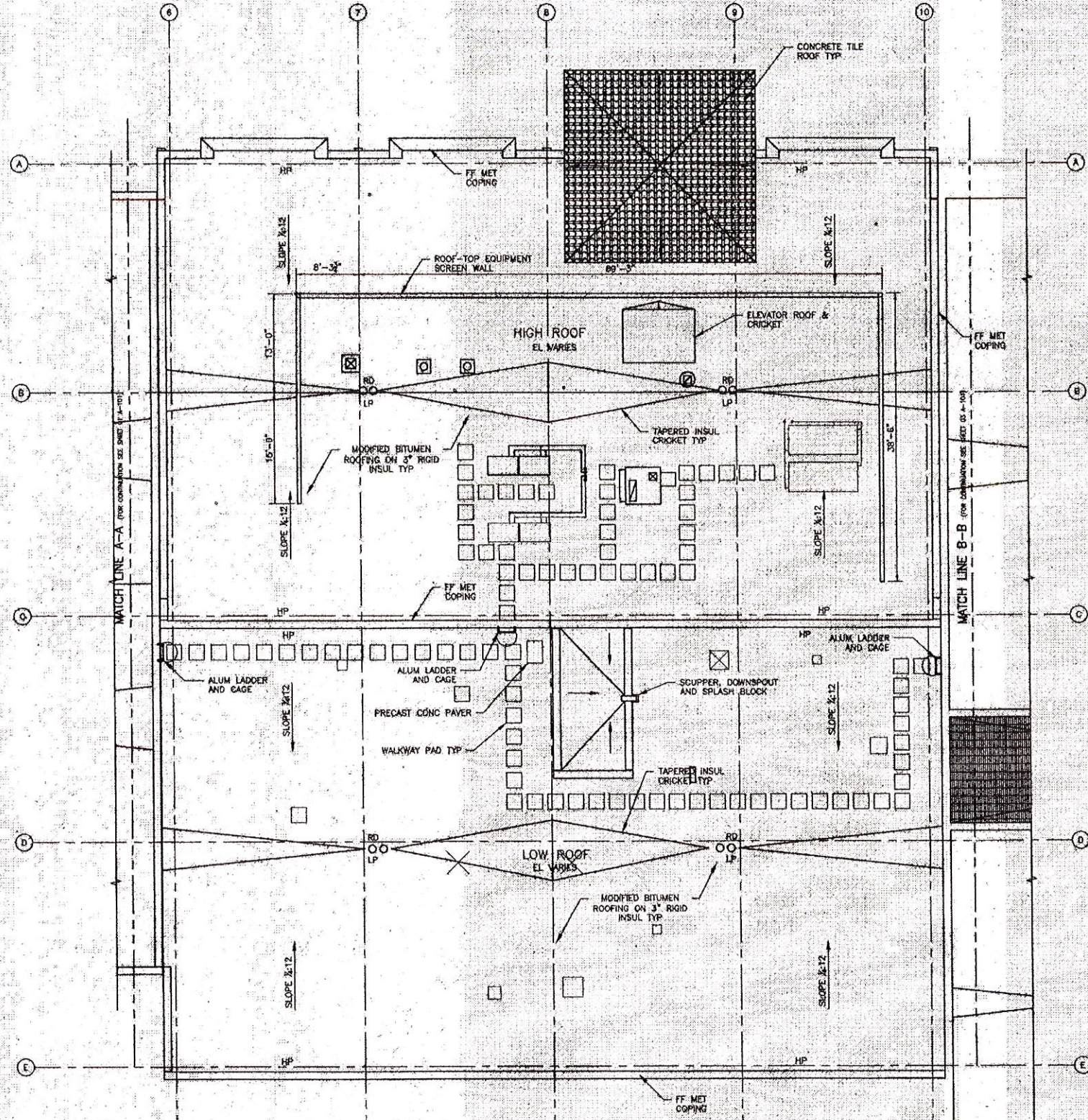
1. Exhibit "B"-Drawings and Warranty is hereby added and available within this addendum. Proposers shall use "Exhibit B" in their proposal package.

Reviewed by:

-----  
Purchasing Manager  
Purchasing Division

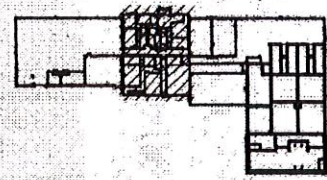
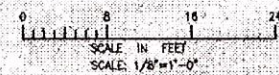
<b>Acknowledged by:</b>	
_____	Contractor
_____	Authorized Representative ( <i>Printed</i> )
_____	Title
_____	Signature
_____	Date





*VOID RCO #2  
SCREEN LOWERS & supports*

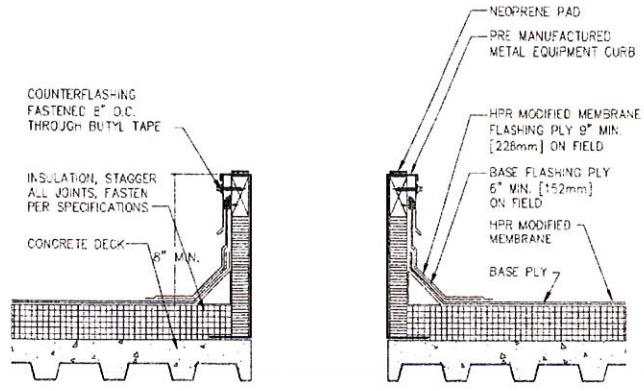
ADMIN CHEMICAL AREA ROOF PLAN  
1/8" = 1'-0"



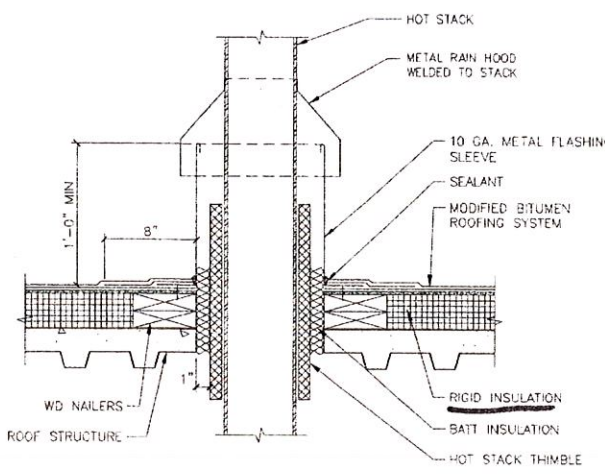
PROJECT NO. 0009581  
 DATE: 11/20/10  
 DRAWN BY: K. COLLINS  
 CHECKED BY: B. HORTON  
 PROJECT CHECKED BY: B. DAILY  
 DATE: NOVEMBER 2010  
 SCALE: AS NOTED

PROJECT NO. 0009581 CAD DWG FILE: 02 A-103 DESIGNED BY: M. HANCOCK DRAWN BY: K. COLLINS DEPT CHECK: B. HORTON PROJ CHECK: B. DAILY DATE: NOVEMBER 2010 SCALE: AS NOTED									
<b>02 A-103</b>									
TOWN OF DAVIE, FLORIDA WATER TREATMENT AND WATER RECLAMATION FACILITY ADMINISTRATION CHEMICAL AREA ROOF PLAN ARCHITECTURAL									
AECOM USA, INC. 2000 W. BRIDGE BOULEVARD SUITE 200, FT. LAUDERDALE FLORIDA 33311 (954) 744-2200	REVISIONS <table border="1"> <tr> <th>NO.</th> <th>DATE</th> <th>MADE BY / CHECKED BY</th> <th>DESCRIPTION</th> </tr> <tr> <td> </td> <td> </td> <td> </td> <td> </td> </tr> </table>	NO.	DATE	MADE BY / CHECKED BY	DESCRIPTION				
NO.	DATE	MADE BY / CHECKED BY	DESCRIPTION						

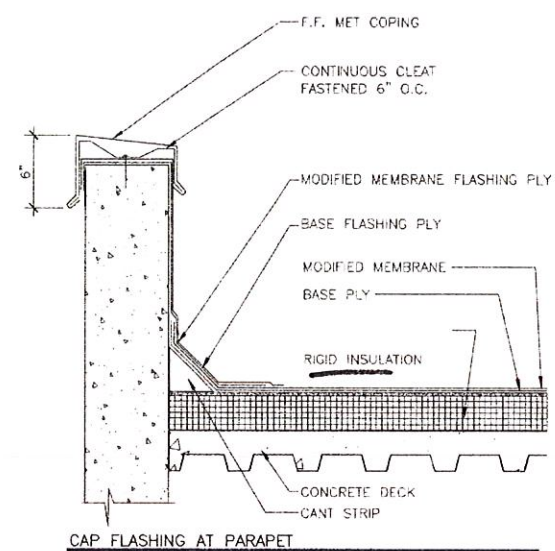




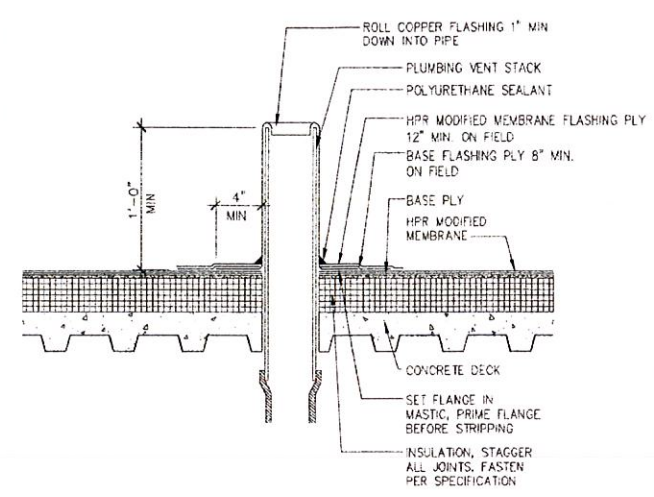
FLASHING AT ROOF EQUIPMENT CURB  
NONE



MODIFIED BITUMEN  
HOT STACK FLASHING  
DETAIL  
SCALE: 1/2"=1'-0"



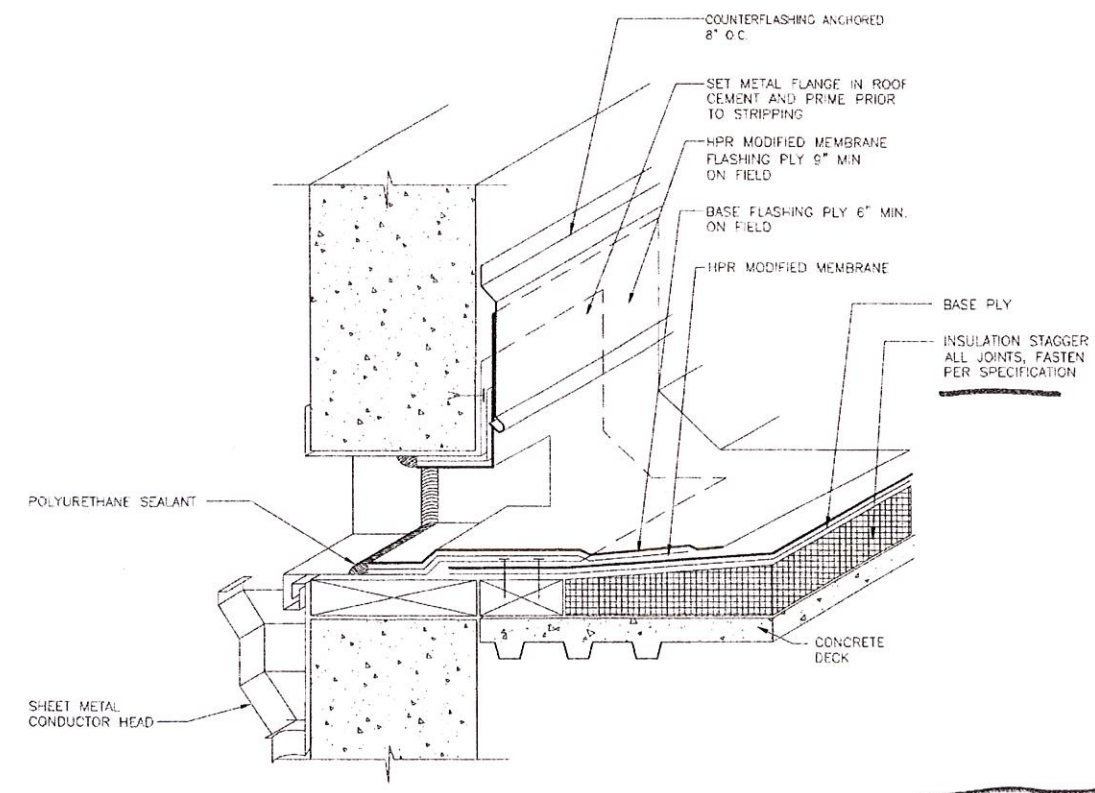
CAP FLASHING AT PARAPET  
NONE



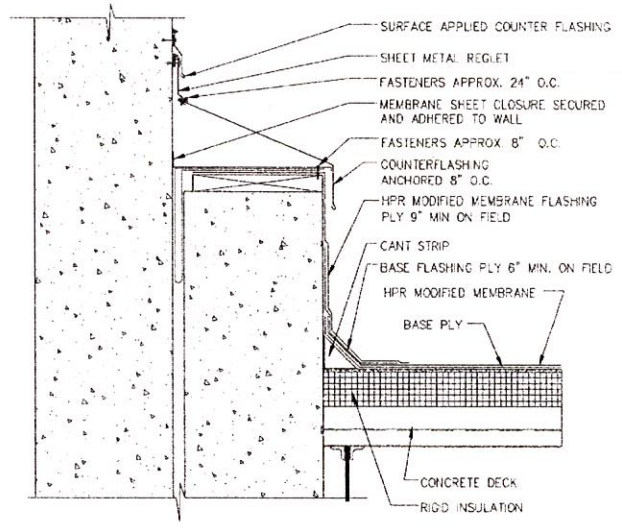
FLASHING AT PLUMBING VENT  
NONE

Structural Supports  
for ROOF TOP Equipment Screens  
& RFI 019 \*

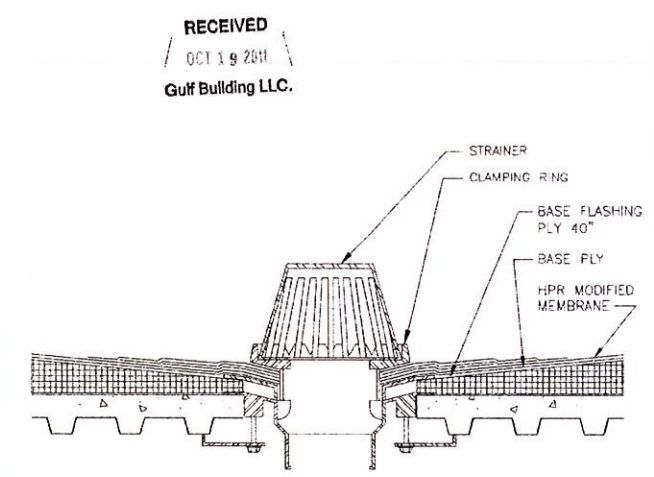
\* RFI 013 \*  
3" INSULATION  
PER AECOM



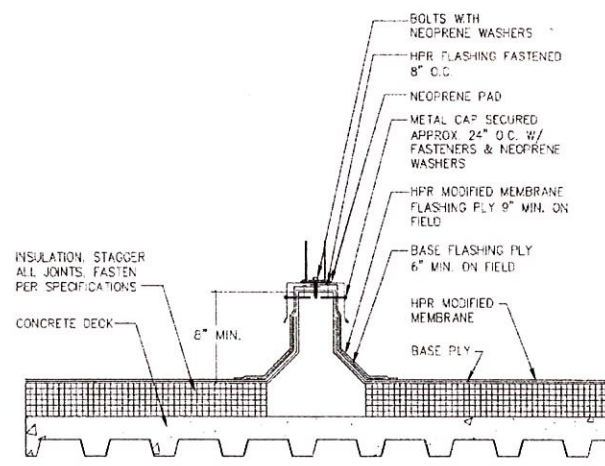
THRU WALL SCUPPER  
NONE



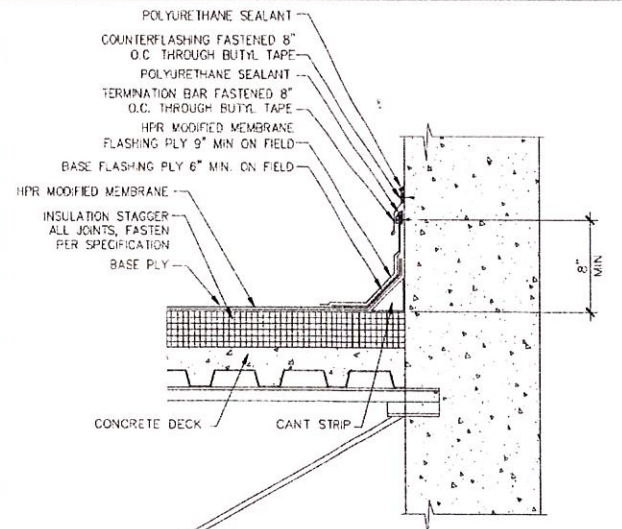
LOW WALL TO HIGH WALL FLASHING  
NONE



ROOF DRAIN FLASHING  
NONE



FLASHING AT EQUIPMENT SUPPORT CURB  
NONE

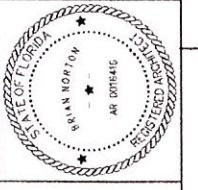


SURFACE TERMINATION AT HIGH WALL  
NONE

AS-BUILTS

MARK	DATE	MADE BY	CHECKED BY	DESCRIPTION

AECOM  
13450 WEST SURFIRE BOULEVARD  
SUITE 100  
DAVE, FL 33503  
(954) 743-7200  
CERTIFICATE NO. 30



TOWN OF DAVIE FLORIDA  
WATER TREATMENT AND WATER RECLAMATION FACILITY  
ARCHITECTURAL  
TYPICAL ROOF DETAILS

PROJECT NO:	60095591
CAD DWG FILE:	99 A-201
DESIGNED BY:	M. MACEACHERN
DRAWN BY:	J. KIRSCH
DEPT CHECK:	B. NORTON
PROJ CHECK:	B. DALY
DATE:	NOVEMBER 2010
SCALE:	AS NOTED

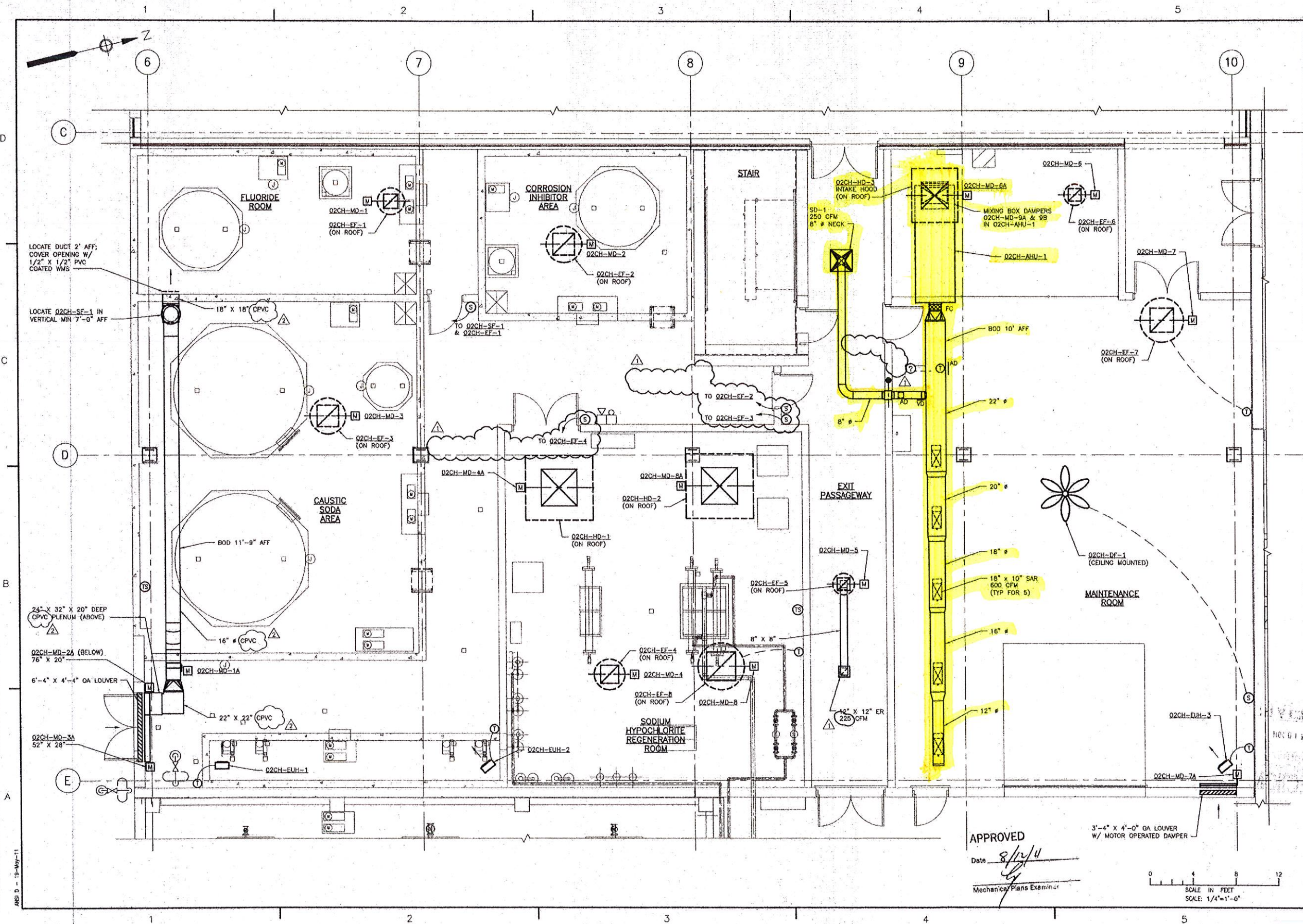
99 A-501

PLOT DATE: Tuesday, November 30, 2010 2:50:22 PM  
 LAST UPDATE: Friday, November 19, 2010 7:57:27 AM  
 ANS: 0 - 15 - Nov-10









LOCATE DUCT 2' AFF;  
COVER OPENING W/  
1/2" X 1/2" PVC  
COATED WMS

LOCATE O2CH-SF-1 IN  
VERTICAL MIN 7'-0" AFF

24" X 32" X 20" DEEP  
CPVC PLENUM (ABOVE)

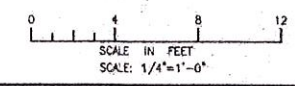
O2CH-MD-26 (BELOW)  
76" X 20"

6'-4" X 4'-4" GA LOUVER

O2CH-MD-3A  
52" X 28"

3'-4" X 4'-0" GA LOUVER  
W/ MOTOR OPERATED DAMPER

APPROVED  
Date: 8/12/11  
Mechanical Plans Examiner



PROJECT NO: 6006591		CAD DWG FILE: 02 M-101		DESIGNED BY: A. CASAVANT		DRAWN BY: B. SANTOSUSSO		DEPT CHECK: C. GALLIGAN		PROJ CHECK: B. DALY		DATE: NOVEMBER 2010		SCALE: 1/4"=1'-0"																	
<p>TOWN OF DAVIE FLORIDA WATER TREATMENT AND WATER RECLAMATION FACILITY ADMINISTRATION BUILDING - CHEMICAL AREA - PLAN - HVAC</p>																															
<p>REVISIONS</p> <table border="1"> <thead> <tr> <th>NO.</th> <th>DATE</th> <th>BY</th> <th>DESCRIPTION</th> </tr> </thead> <tbody> <tr> <td>1</td> <td>3/29/11</td> <td>NTR</td> <td>MAKE BY DECDED</td> </tr> <tr> <td>2</td> <td>5/7/11</td> <td>BJS</td> <td>BUILDING PERMIT COMMENT RESOLUTION</td> </tr> <tr> <td>3</td> <td>5/7/11</td> <td>ABC</td> <td>BUILDING PERMIT COMMENT RESOLUTION</td> </tr> </tbody> </table>																NO.	DATE	BY	DESCRIPTION	1	3/29/11	NTR	MAKE BY DECDED	2	5/7/11	BJS	BUILDING PERMIT COMMENT RESOLUTION	3	5/7/11	ABC	BUILDING PERMIT COMMENT RESOLUTION
NO.	DATE	BY	DESCRIPTION																												
1	3/29/11	NTR	MAKE BY DECDED																												
2	5/7/11	BJS	BUILDING PERMIT COMMENT RESOLUTION																												
3	5/7/11	ABC	BUILDING PERMIT COMMENT RESOLUTION																												
<p>AECOM USA, INC. NOT EXERCISED DIRECT PHONE (781) 246-2000 DIVISION OF SUBCONTRACTOR REG. NUMBER</p> <p><b>AECOM</b></p> <p>MANUEL GONZALEZ LICENSED PROFESSIONAL ENGINEER STATE OF FLORIDA NO. 12518</p>																															
<p>02 M-101</p>																															

RUN PLUMBING, P.V. 02/09/07 - DAVE WPA AND WPA/SPECTRUM/MDR M-101.DWG  
 -LAST UPDATE: Thursday, May 13, 2011 2:51:08 PM  
 PLOT DATE: Thursday, May 19, 2011 2:51:33 PM  
 ANS D - 13-May-11







**CONDUIT AND WIRING SCHEDULE**

**WIRING:**

[PA]	3/4" C, 2-12 AWG, 1-12 AWG (G)
[PA-4]	3/4" C, 4-12 AWG, 1-12 AWG (G)
[PB]	3/4" C, 3-12 AWG, 1-12 AWG (G)
[PC]	3/4" C, 3-10 AWG, 1-10 AWG (G)
[PC-8]	1" C, 8-10 AWG, 1-10 AWG (G)
[PC-2]	3/4" C, 2-10 AWG, 1-10 AWG (G)
[PC-4]	3/4" C, 4-10 AWG, 1-10 AWG (G)
[PD]	3/4" C, 3-8 AWG, 1-10 AWG (G)
[PE]	3/4" C, 3-6 AWG, 1-10 AWG (G)
[PF]	1" C, 3-4 AWG, 1-10 AWG (G)
[PF-4]	1 1/4" C, 4-4 AWG, 1-10 AWG (G)
[PG]	1" C, 3-4 AWG, 1-8 AWG (G)
[PH]	1 1/4" C, 3-2 AWG, 1-8 AWG (G)
[PH-4]	1 1/2" C, 4-2 AWG, 1-8 AWG (G)
[PJ]	1 1/4" C, 3-1 AWG, 1-8 AWG (G)
[PK]	1 1/2" C, 3-1 AWG, 1-6 AWG (G)
[PL]	1 1/2" C, 3-1/0 AWG, 1-6 AWG (G)
[PL-4]	2" C, 4-1/0 AWG, 1-6 AWG (G)
[PM]	1 1/2" C, 3-2/0 AWG, 1-6 AWG (G)
[PN]	2" C, 3-3/0 AWG, 1-6 AWG (G)
[PP]	2" C, 3-4/0 AWG, 1-4 AWG (G)
[PO]	2" C, 3-250 KCM, 1-4 AWG (G)
[PR]	3" C, 3-350 KCM, 1-4 AWG (G)
[PS]	3" C, 3-350 KCM, 1-2 AWG (G)
[PT]	3" C, 3-500 KCM, 1-2 AWG (G)
[PU]	2-2" C, 6-3/0 AWG, 2-2 AWG (G)
[PV]	2-2" C, 6-4/0 AWG, 2-2 AWG (G)
[PW]	2-2" C, 6-250 KCM, 2-2 AWG (G)
[PX]	2-3" C, 6-350 KCM, 2-1 AWG (G)
[PY]	2-3" C, 6-500 KCM, 2-1/0 AWG (G)
[PZ]	3-3" C, 9-350 KCM, 3-1/0 AWG (G)
[PPA]	3-3" C, 9-350 KCM, 3-2/0 AWG (G)
[PPB]	3-3" C, 9-500 KCM, 3-2/0 AWG (G)
[PPC]	3-3" C, 9-500 KCM, 3-3/0 AWG (G)
[PPD]	4-3" C, 12-350 KCM, 4-3/0 AWG (G)
[PPE]	4-3" C, 12-500 KCM, 4-4/0 AWG (G)
[PPF]	5-3" C, 15-500 KCM, 5-4/0 AWG (G)
[PPG]	6-3" C, 18-500 KCM, 6-250 KCM (G)
[PPH]	7-3 1/2" C, 21-500 KCM, 7-350 KCM (G)
[PPJ]	8-3 1/2" C, 24-500 KCM, 8-500 KCM (G)
[PPK]	10-3 1/2" C, 30-500 KCM, 10-500 KCM (G)
[PPL]	11-3 1/2" C, 33-500 KCM, 11-500 KCM (G)

**WIRING:**

[D2]	3/4" C, 2-14 AWG, 1-14 AWG (G)
[D3]	3/4" C, 3-14 AWG, 1-14 AWG (G)
[D4]	3/4" C, 4-14 AWG, 1-14 AWG (G)
[D5]	3/4" C, 5-14 AWG, 1-14 AWG (G)
[D6]	3/4" C, 6-14 AWG, 1-14 AWG (G)
[D7]	3/4" C, 7-14 AWG, 1-14 AWG (G)
[D8]	3/4" C, 8-14 AWG, 1-14 AWG (G)
[D9]	3/4" C, 9-14 AWG, 1-14 AWG (G)
[D10]	3/4" C, 10-14 AWG, 1-14 AWG (G)
[D11]	3/4" C, 11-14 AWG, 1-14 AWG (G)
[D12]	3/4" C, 12-14 AWG, 1-14 AWG (G)
[D13]	3/4" C, 13-14 AWG, 1-14 AWG (G)
[D14]	3/4" C, 14-14 AWG, 1-14 AWG (G)
[D15]	3/4" C, 15-14 AWG, 1-14 AWG (G)
[D16]	3/4" C, 16-14 AWG, 1-14 AWG (G)
[D17]	3/4" C, 17-14 AWG, 1-14 AWG (G)
[D18]	3/4" C, 18-14 AWG, 1-14 AWG (G)
[D19]	3/4" C, 19-14 AWG, 1-14 AWG (G)
[D20]	3/4" C, 20-14 AWG, 1-14 AWG (G)
[D21]	1" C, 21-14 AWG, 1-14 AWG (G)
[D22]	1" C, 22-14 AWG, 1-14 AWG (G)
[D23]	1" C, 23-14 AWG, 1-14 AWG (G)
[D24]	1" C, 24-14 AWG, 1-14 AWG (G)
[D25]	1" C, 25-14 AWG, 1-14 AWG (G)
[D26]	1" C, 26-14 AWG, 1-14 AWG (G)
[D27]	1" C, 27-14 AWG, 1-14 AWG (G)
[D28]	1" C, 28-14 AWG, 1-14 AWG (G)
[D29]	1" C, 29-14 AWG, 1-14 AWG (G)
[D30]	1" C, 30-14 AWG, 1-14 AWG (G)
[D31]	1 1/2" C, 31-14 AWG, 1-14 AWG (G)
[D32]	1 1/2" C, 32-14 AWG, 1-14 AWG (G)
[D40]	1 1/2" C, 40-14 AWG, 1-14 AWG (G)
[D50]	1 1/2" C, 50-14 AWG, 1-14 AWG (G)
[D60]	1 1/2" C, 60-14 AWG, 1-14 AWG (G)
[D70]	1 1/2" C, 70-14 AWG, 1-14 AWG (G)
[D80]	2" C, 80-14 AWG, 1-14 AWG (G)
[D90]	2" C, 90-14 AWG, 1-14 AWG (G)
[D100]	2" C, 100-14 AWG, 1-14 AWG (G)
[D110]	2" C, 110-14 AWG, 1-14 AWG (G)
[D120]	2" C, 120-14 AWG, 1-14 AWG (G)

**WIRING:**

[C1]	3/4" C, 1-TSP 16 AWG
[C2]	1" C, 2-TSP 16 AWG
[C3]	1" C, 3-TSP 16 AWG
[C4]	1 1/2" C, 4-TSP 16 AWG
[C5]	1 1/2" C, 5-TSP 16 AWG
[C6]	1 1/2" C, 6-TSP 16 AWG
[C7]	1 1/2" C, 7-TSP 16 AWG
[C8]	1 1/2" C, 8-TSP 16 AWG
[C9]	2" C, 9-TSP 16 AWG
[C10]	2" C, 10-TSP 16 AWG
[C12]	2" C, 12-TSP 16 AWG
[C13]	2" C, 13-TSP 16 AWG
[C14]	2" C, 14-TSP 16 AWG
[C15]	2" C, 15-TSP 16 AWG
[C16]	2 1/2" C, 16-TSP 16 AWG
[C-17]	2 1/2" C, 17-TSP 16 AWG
[C-18]	2 1/2" C, 18-TSP 16 AWG
[C-19]	2 1/2" C, 19-TSP 16 AWG
[C-20]	2 1/2" C, 20-TSP 16 AWG
[C-21]	2 1/2" C, 21-TSP 16 AWG
[C-22]	3" C, 22-TSP 16 AWG
[C-23]	3" C, 23-TSP 16 AWG
[C-24]	3" C, 24-TSP 16 AWG
[C-25]	3" C, 25-TSP 16 AWG
[C-26]	3" C, 26-TSP 16 AWG
[C-27]	3" C, 27-TSP 16 AWG
[C-28]	3" C, 28-TSP 16 AWG
[C-29]	3" C, 29-TSP 16 AWG
[C-30]	3" C, 30-TSP 16 AWG
[C-31]	3" C, 31-TSP 16 AWG
[C-32]	3" C, 32-TSP 16 AWG
[C-33]	3" C, 33-TSP 16 AWG
[C-34]	1 1/2" C, 8-3/C#16 SH.

**WIRING:**

NOTE: ALL G SERIES WIRING SHALL BE CONNECTED TO GROUNDING BUS BAR LOCATED IN THE ELECTRICAL ROOM UNLESS OTHERWISE INDICATED. INSTALL IN PVC CONDUIT.

[G]	250KCM BARE, TINNED-COPPER
[G1]	3/4" C, 1-12 AWG (G)
[G2]	3/4" C, 1-10 AWG (G)
[G3]	3/4" C, 1-8 AWG (G)
[G4]	3/4" C, 1-6 AWG (G)
[G5]	1" C, 1-4 AWG (G)
[G6]	1" C, 1-2 AWG (G)
[G7]	1" C, 1-1/0 AWG (G)
[G8]	1" C, 1-2/0 AWG (G)
[G9]	1 1/2" C, 1-3/0 AWG (G)
[G10]	1 1/2" C, 1-4/0 AWG (G)
[G11]	1 1/2" C, 1-250 KCM (G)
[G12]	2" C, 1-350 KCM (G)
[G13]	2" C, 1-500 KCM (G)
[T1]	1" C, VENDOR CABLE
[T2]	3/4" C, 6-12 AWG, 12 AWG (G)
[T3]	3/4" C, 2-10 AWG, 10 AWG (G)
[T4]	2" C, MSC
[T5]	1" C, ETHERNET CAT 5E CABLE
[T5-2]	2" C, ETHERNET CABLE
[T6]	1 1/2" C, 4-1/0 AWG, 6 AWG (G)
[T7]	3" C, 5 MSC
[T8]	2" C, 2-RG-6 QUAD SHIELD COAX

**MEDIUM VOLTAGE CABLE AND CONDUIT SCHEDULE**

CONDUIT TAG	CONDUIT/CABLE SIZE	NEC TABLE 310.77 FOR THREE SINGLE INSULATED COPPER CONDUCTORS IN UNDERGROUND ELECTRICAL DUCTS	AMPACITY
MV-PA	TWO SETS, EACH 5" C, 3-500 KCM (15KV), 1-1 AWG (GND)	THREE CIRCUITS, FIGURE 310.60 DETAIL 2	395 * 2 = 790 AMPS
MV-PB	ONE SET, 6" C, 3-1/0 AWG (15KV), 1-4 AWG (GND)	ONE CIRCUIT, FIGURE 310.60 DETAIL 1	215 AMPS/SET
MV-PC	ONE SET, 3" C, 3-2 AWG (15KV), 1-6 AWG (GND)	ONE CIRCUIT, FIGURE 310.60 DETAIL 1	165 AMPS/SET
MV-PC	ONE SET, 3" C, 3-2 AWG (15KV), 1-6 AWG (GND)	THREE CIRCUITS, FIGURE 310.60 DETAIL 2	135 AMPS/SET
MV-PC	ONE SET, 3" C, 3-2 AWG (15KV), 1-6 AWG (GND)	SIX CIRCUITS, FIGURE 310.60 DETAIL 3	115 AMPS/SET
MV-PD	ONE SET, 2" C, 1-2 AWG (15KV)	ONE CIRCUIT, FIGURE 310.60 DETAIL 1	N/A

TOWN OF DAVIE FLORIDA  
WATER TREATMENT AND WATER RECLAMATION FACILITY

**CONDUIT AND WIRING CALLOUT SCHEDULES**  
ELECTRICAL

<p>PROJECT NO: 60096591 CAD DWG FILE: 00 E-002 DESIGNED BY: C. MURPHY DRAWN BY: M. STEWART DEPT CHECK: Y. RIZK PROJ CHECK: B. DALY DATE: 9/12/2013 SCALE: AS NOTED</p>	<p>RECORD DRAWING NOTE: This record drawing has been prepared based on existing drawings and field observations. While reasonable efforts have been made to ensure accuracy and completeness, the location, size and construction of the work should be field checked prior to any construction of the work.</p> <p>REVISIONS</p> <table border="1"> <thead> <tr> <th>MARK</th> <th>DATE</th> <th>MADE BY</th> <th>CHECKED</th> <th>DESCRIPTION</th> </tr> </thead> <tbody> <tr> <td>1</td> <td>1-24-14</td> <td>MS</td> <td>YR</td> <td>RECORD DRAWING ISSUED</td> </tr> </tbody> </table>	MARK	DATE	MADE BY	CHECKED	DESCRIPTION	1	1-24-14	MS	YR	RECORD DRAWING ISSUED
MARK	DATE	MADE BY	CHECKED	DESCRIPTION							
1	1-24-14	MS	YR	RECORD DRAWING ISSUED							

AECOM  
AECOM TECHNICAL SERVICES  
800 DOUGLAS ENTRANCE, 2nd FLOOR  
CORAL GABLES, FLORIDA 33134  
(305) 447-3550  
CERTIFICATE NO. 8113

RECORD DRAWING  
NOTE: This record drawing has been prepared based on existing drawings and field observations. While reasonable efforts have been made to ensure accuracy and completeness, the location, size and construction of the work should be field checked prior to any construction of the work.

STATE OF FLORIDA  
REGISTERED PROFESSIONAL ENGINEER  
No. 70908  
DAVID A. MURPHY

P:\DWG\DWG\00096591 - DAVE WIP AND WIP\DWG\00 E-002.DWG  
 LAST UPDATE: Friday, January 24, 2014 11:00:51 AM  
 PLOT DATE: Friday, January 24, 2014 12:22:30 PM  
 ANSI D - 24-Jan-14



AB.DP-1-A											
PHASE A LOAD	37.0	KVA	LOCATION: ADMIN. BUILDING UTILITY ROOM 215			VOLTAGE		480V, 3PH, 3W, 60HZ			
PHASE B LOAD	37.0	KVA				MAIN		400 A TRIP			
PHASE C LOAD	37.0	KVA				SHORT CKT BRACING		65,000 AMPS			
TOTAL LOAD	111.0	KVA				ENCLOSURE		SURFACE MOUNTED			
NOTE: PROVIDE SPD											
LOAD	VA	TRIP	POLES	CKT	PHASE	CKT	POLES	TRIP	VA	LOAD	
ELEVATOR CONTROLLER	10,476	20	3	1	A	2	3	90	27,950	45.0 KVA XFMR AB.LP-1-A	
30.0 KVA XFMR AB.LP-2-A	22,270	60	3	3	A	4	3	30	9,600	HEAT PUMP OUTDOOR UNIT 02-HPO-01-1	
					B						
					C						
SPARE	20	3	5	6	A	6	3	30	9,600	HEAT PUMP OUTDOOR UNIT 02-HPO-01-2	
					B						
					C						
SPARE	20	3	7	8	A	8	3	60	13,070	30.0 KVA XFMR AB.LP-3-A	
					B						
					C						
ELECTRIC DUCT HEATER 02-EDH-1	6,310	20	3	9	A	10	3	20	6,310	ELECTRIC DUCT HEATER 02-EDH-2	
					B						
					C						
FUME HOOD WASTEWATER LAB 02AD-EF-1	1,100	20	3	11	A	12	3	20	1,100	FUME HOOD WATER LAB 02AD-EF-2	
					B						
					C						
ENERGY RECOVERY VENTILATOR 02-ERV-1	5,300	20	3	13	A	14	3	20	1,700	SEWAGE EJECTOR PUMP SE-1 (1 HP)	
					B						
					C						

AB.LP-1-A											
PHASE A LOAD	11.3	KVA	LOCATION: ADMIN. BUILDING UTILITY ROOM 215			VOLTAGE		208/120V, 3PH, 4W, 60HZ			
PHASE B LOAD	7.7	KVA				MAIN		150 A TRIP			
PHASE C LOAD	9.0	KVA				SHORT CKT BRACING		10,000 AMPS			
TOTAL LOAD	28.0	KVA				ENCLOSURE		SURFACE MOUNTED			
NOTE: PROVIDE SPD											
LOAD	VA	TRIP	POLES	CKT	PHASE	CKT	POLES	TRIP	VA	LOAD	
WRF LABORATORY 207 LIGHTING	810	20	1	1	A	2	1	20	720	WATER LABORATORY 206 LIGHTING	
OPERATORS OFFICE 205 LIGHTING	360	20	1	3	B	4	1	20	450	CORRIDOR 203 LIGHTING	
LOBBY 202 LIGHTING	700	20	1	5	C	6	1	20	360	STAIR NO. 1 LIGHTING	
MECHANICAL ROOM 220 LIGHTING	1,660	20	1	7	A	8	1	20	1,080	CONTROL ROOM 208 LIGHTING	
WOMENS SHOWER 210 LIGHTING	200	20	1	9	B	10	1	20	360	WOMENS TOILET 209 LIGHTING	
MENS SHOWER 213 LIGHTING	250	20	1	11	C	12	1	20	360	MENS TOILET 212 LIGHTING	
UTILITY ROOM 215 LIGHTING	330	20	1	13	A	14	1	20	720	RECORDS STORAGE 217 LIGHTING	
CORRIDOR 218 LIGHTING	180	20	1	15	B	16	1	20	640	LUNCH ROOM 219 LIGHTING	
CORRIDOR 221 LIGHTING	1,440	20	1	17	C	18	1	20	100	DOMESTIC HOT WATER PUMP P-1	
DOMESTIC HOT WATER HEATER DWH-1	4,500	30	2	19	A	20	1	20	250	SOLAR HOT WATER CIRCULATION PUMP P-2	
MAIN 2-ATC PANEL	2,500	30	1	21	C	24	1	20	600	MASTER RADIO PLC PANEL	
CCTV MAIN ETHERNET SWITCH	800	20	1	23	A	26	1	20	1,000	OPERATOR WORK STATION OWS-03 WRF UPS	
OPERATOR WORK STATION OWS-02-WTP UPS	1,000	20	1	25	B	28	1	20	100	EXTERIOR BUILDING MOUNTED LIGHTING	
EXTERIOR SODIUM HYPO & BRINE SILO MOUNTED LIGHTING	100	20	1	27	C	30	1	20	500	LOCAL CARD ACCESS CONTROLLER DOOR 202A, 203A	
LOCAL CARD ACCESS CONTROLLER DOOR 216A, 251A	500	20	1	29	A	32	1	20	500	LOCAL CARD ACCESS CONTROLLER DOOR 251B, 272A	
MASTER CARD ACCESS CONTROLLER	600	20	1	31	B	34	1	20	360	OUTSIDE BUILDING MOUNTED RECEPTACLES	
OUTSIDE BUILDING MOUNTED RECEPTACLES	360	20	1	33	C	36	1	20	500	FIRE ALARM CONTROL PANEL AB.FACP-1	
SECURITY CONTROL PANEL AB.SCP-1	500	20	1	35	A	38	1	20	500	FIRE ALARM ANNUNCIATOR AB.FAA-1	
ELEVATOR PIT RECEPTACLE	180	20	1	37	B	40	1	15	200	ELEVATOR CAR LIGHTING	
ELEVATOR CONTROL CLOSET RECEPT.	180	20	1	39	C	42	1	20	1,000	CCTV MONITORING SYSTEM	

AB.LP-2-A											
PHASE A LOAD	8.2	KVA	LOCATION: ADMIN. BUILDING UTILITY ROOM 215			VOLTAGE		208/120V, 3PH, 4W, 60HZ			
PHASE B LOAD	6.5	KVA				MAIN		100 A TRIP			
PHASE C LOAD	7.6	KVA				SHORT CKT BRACING		10,000 AMPS			
TOTAL LOAD	22.3	KVA				ENCLOSURE		SURFACE MOUNTED			
NOTE: PROVIDE SPD											
LOAD	VA	TRIP	POLES	CKT	PHASE	CKT	POLES	TRIP	VA	LOAD	
WASTEWATER LABORATORY 207 RECEPT.	720	20	1	1	A	2	1	20	720	WRF LABORATORY 207 RECEPT.	
WATER LABORATORY 206 RECEPTACLES	900	20	1	3	B	4	1	20	720	WATER LABORATORY 206 RECEPTACLES	
OPERATORS OFFICE 205 RECEPTACLES	540	20	1	5	C	6	1	20	360	OPERATORS OFFICE 205 RECEPTACLES	
LOBBY 202 RECEPTACLES	360	20	1	7	A	8	1	20	360	MECHANICAL ROOM 220 RECEPTACLES	
MECHANICAL ROOM 220 RECEPTACLES	640	20	1	9	B	10	1	20	360	LOBBY 202 RECEPTACLES	
CONTROL ROOM 208 RECEPTACLES	900	20	1	11	C	12	1	20	720	CONTROL ROOM 208 RECEPTACLES	
CORRIDOR 203 RECEPTACLES	720	20	1	13	A	14	1	20	360	WOMENS TOILET/SHOWER 209, 210 RECEPT.	
WOMENS TOILET 209 RECEPTACLES	180	20	1	15	B	16	1	20	180	MENS TOILET 212 RECEPTACLES	
MENS TOILET/SHOWER 212, 213 RECEPT.	640	20	1	17	C	18	1	20	360	UTILITY ROOM 215 RECEPTACLES	
UTILITY ROOM/JAN CLO. 215, 214 RECEPT.	360	20	1	19	A	20	1	20	360	RECORDS STOR/RECYL 216, 216 RECEPT.	
CORRIDOR 218 RECEPTACLES	360	20	1	21	B	22	1	20	360	LUNCH ROOM 219 RECEPTACLES	
LUNCH ROOM 219 RECEPTACLES	640	20	1	23	C	24	1	20	360	LUNCH ROOM 219 RECEPTACLES	
LUNCH ROOM REFRIGERATOR 219 RECEPT.	150	20	1	25	A	26	1	20	1,500	LUNCH ROOM REFRIGERATOR 223 RECEPT.	
CORRIDOR 221 RECEPTACLES	540	20	1	27	B	28	1	20	750	SECURITY SYSTEM RECEPTACLE	
CONTROL ROOM SECURITY COMPUTER RECEPT.	760	20	1	29	C	30	1	20	500	UTILITY ROOM COMM. CAGE RECEPTACLE	
UTILITY ROOM COMM. CAGE RECEPTACLE	500	20	1	31	A	32	1	20	500	UTILITY ROOM COMM. CAGE RECEPTACLE	
UTILITY ROOM COMM. CAGE RECEPTACLE	500	20	1	33	B	34	1	20	500	CCTV MONITORING SYSTEM	
WATER FOUNTAIN RECEPTACLES 221	1,000	20	1	35	C	36	1	20	1,000	WATER FOUNTAIN RECEPTACLES 221	
SECURITY SYSTEM MAIN CONTROLLER	1,000	20	1	37	A	38	1	20	600	SECURITY SYSTEM STATION NO. 2	
SECURITY SYSTEM STATION NO. 1	600	20	1	39	B	40	1	20		SPACE	
SPACE				41	C	42				SPACE	

AB.LP-3-A											
PHASE A LOAD	5.0	KVA	LOCATION: ADMIN. BUILDING UTILITY ROOM 215			VOLTAGE		208/120V, 3PH, 4W, 60HZ			
PHASE B LOAD	4.4	KVA				MAIN		100 A TRIP			
PHASE C LOAD	3.6	KVA				SHORT CKT BRACING		10,000 AMPS			
TOTAL LOAD	13.1	KVA				ENCLOSURE		SURFACE MOUNTED			
NOTE: PROVIDE SPD											
LOAD	VA	TRIP	POLES	CKT	PHASE	CKT	POLES	TRIP	VA	LOAD	
HEAT PUMP INDOOR UNIT 02-HPI-1	433	20	2	1	A	2	2	20	368	HEAT PUMP INDOOR UNIT 02-HPI-2	
HEAT PUMP INDOOR UNIT 02-HPI-3	327	20	2	3	B	4	2	20	160	HEAT PUMP INDOOR UNIT 02-HPI-4	
					C						
HEAT PUMP INDOOR UNIT 02-HPI-5	144	20	2	5	B	6	2	20	250	HEAT PUMP INDOOR UNIT 02-HPI-6	
					C						
HEAT PUMP INDOOR UNIT 02-HPI-7	152	20	2	7	A	8	2	20	160	HEAT PUMP INDOOR UNIT 02-HPI-8	
					B						
HEAT PUMP INDOOR UNIT 02-HPI-9	160	20	2	9	C	10	2	20	160	HEAT PUMP INDOOR UNIT 02-HPI-10	
					A						
HEAT PUMP INDOOR UNIT 02-HPI-11	160	20	2	11	B	12	2	20	880	HEAT PUMP INDOOR UNIT 02-HPI-12	
					C						
HEAT PUMP INDOOR UNIT 02-HPI-13	880	20	2	13	A	14	1	20	36	FUME HOOD WASTEWATER LAB 02AD-SF-1	
					B	16	1	20	36		FUME HOOD WATER LAB 02AD-SF-2
MECHANICAL ROOF 02AD-EF-3	36	20	1	15	C	18	1	20	240	LUNCH ROOM 1ST FLR 02AD-KH-1	
PLUMBING FIXTURE DC TRANSFORMER	1000	20	1	17	A	20	1	20	300	WATER BOOSTER PUMP P-1	
ELECTRIC WALL HEATER 02-EWH-1	1,600	20	1	19	B	22	1	20	300	WATER BOOSTER PUMP P-2	
SPARE	20	1	21	C	24	2	30	4500	DOMESTIC HOT WATER HEATER		
SPARE	20	1	23	A	26	1	20	600	DOMESTIC HOT WATER HEATER CONTROLLER		
SPARE	20	1	25	B	28	1	20				
SPACE				27	C	28				SPACE	

PART/DRAWING: P-00000001 - DAVE WTP AND WRF SHEETS (LVP) E-0002.DWG  
 LAST UPDATE: Friday, December 03, 2010 3:14:18 PM  
 ANS D - 3 - Dec-10

TOWN OF DAVE FLORIDA  
WATER TREATMENT AND WATER RECLAMATION FACILITY

**ADMINISTRATION - PANEL SCHEDULES 2**

ELECTRICAL

PROJECT NO: 60095591	REVISIONS
CAD DWG FILE: 02 E-002	DATE: MAKE BY CHECKED
DESIGNED BY: C. MURPHY	DATE:
DRAWN BY: M. STEWART	DATE:
DEPT CHECK: Y. RIZK	DATE:
PROJ CHECK: B. DALY	DATE:
DATE: NOVEMBER 2010	DATE:
SCALE: AS NOTED	DATE:
<b>02 E-002</b>	

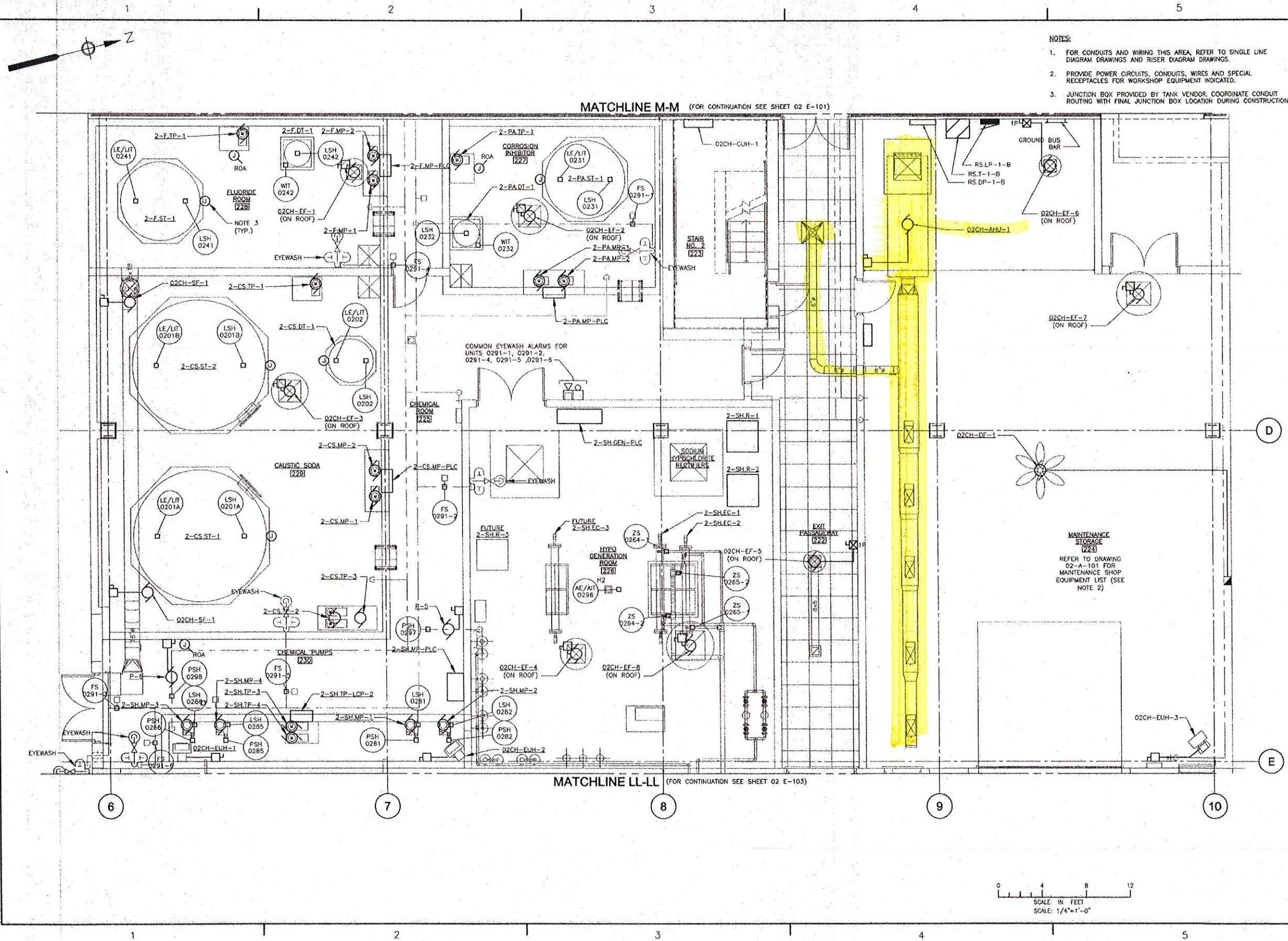












- NOTES:
- FOR CONDUITS AND WIRING THIS AREA, REFER TO SINGLE LINE DIAGRAM DRAWINGS AND RISER DIAGRAM DRAWINGS.
  - PROVIDE POWER CIRCUITS, CONDUITS, WIRES AND SPECIAL RECEPTACLES FOR WORKSHOP EQUIPMENT INDICATED.
  - JUNCTION BOX PROVIDED BY TANK VENDOR, COORDINATE CONDUIT ROUTING WITH FINAL JUNCTION BOX LOCATION DURING CONSTRUCTION.

MARK	DATE	MADE BY	CHECKED	DESCRIPTION	REVISIONS

AECOM USA, INC.  
 1340 WEST SURFERS BOULEVARD  
 SUITE 200  
 BOCA RATON, FLORIDA 33433  
 (561) 746-7200  
 PROJECT NO. 02 E-102

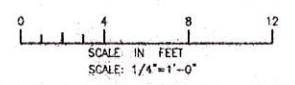


TOWN OF DAVIE FLORIDA  
 WATER TREATMENT AND WATER RECLAMATION FACILITY  
 ADMINISTRATION-CHEMICAL - GRADE LEVEL  
 POWER PLAN 2  
 ELECTRICAL

PROJECT NO:	00095591
CAD DWG FILE:	02 E-102
DESIGNED BY:	C. MURPHY
DRAWN BY:	M. STEWART
DEPT CHECK:	Y. RIZK
PROJ CHECK:	B. DALY
DATE:	NOVEMBER 2010
SCALE:	AS NOTED

02 E-102

P:\PROJECTS\02 E-102\02 E-102.dwg  
 LAST UPDATE: Thursday, December 02, 2010 8:24:44 AM  
 PLOT DATE: Friday, December 03, 2010 5:02:57 PM  
 ANS D - 2-06c-10









#### Terms, Conditions and Limitations

- The only components of your roof that are covered by this warranty are the membrane and membrane flashing products specifically identified on the face of this warranty. Accordingly, any reference in this warranty to the "roof" means only these components.
- All roof work must be performed by a roofing contractor who is authorized to offer a Soprema warranty (sometimes referred to in this warranty as an "authorized roofer" or some similar term). The authorized roofer who originally installed your roof is sometimes referred to in this warranty as the "installing contractor."
- Warranty coverage starts on the substantial completion date set out on the face of this warranty and, subject to earlier termination, will continue for the specified length of time.
- For purposes of this warranty, a "leak" means the admission of water into your building through an opening, separation or other similar defect in the roof and the term "warranted leak" means a leak through the roof caused by defects in factory workmanship or materials or defective workmanship by the installing contractor. A warranted leak is not, for example, a leak caused by or resulting from: (a) the direct or indirect effect of lightning, explosion, flood, hail, windstorm having a 3-second gust speed greater than 73 m.p.h. (as recorded by the data collection point that reports to the National Weather Service (whether official or unofficial) located nearest to your building), earthquake, hurricane, tornado, microburst, or other similar event; (b) a defect, settlement, movement, displacement, or structural failure in or of the surface over which the roof is applied or in or of the structure of your building; (c) moisture entering the roof through or around walls, copings, pipelines or conduit, skylights, vents, or other structures or fixtures; (d) defects in or faulty or improper design, specification, construction or engineering of your building or the surface or material over which the roof is applied; (e) faulty or improper design, specification or engineering of the roof assembly in relation to the physical characteristics of your building or the climate where your building is located; (f) damage from lack of positive drainage; (g) damage from exposure to corrosive substances, for example, animal guano, chlorofluorocarbons, solvents, gasoline, kerosene, turpentine, or other hydrocarbons, acids, alkalis, salt, oil, fat, grease, damaging exhausts, or residue from any of the foregoing; (h) damage from internal pressure conditions or condensation beneath the roof; (i) damage from fire or other source of excessive heat; (j) damage from deliberate or negligent acts such as vandalism, terrorism, misuse, abuse, or acts of civil disobedience or war; (k) damage caused by birds, animals, insects or vegetation; (l) damage from falling, flying, dropped or blown objects; (m) damage from excessive traffic over or storage of materials on the roof; (n) damage attributable to a change or changes in the usage of your building; (o) damage caused by or during installation of equipment, fixtures, utilities, or structures on, through, or near the roof; (p) installations on or through the roof; (q) damage attributable to repairs or modifications performed or materials supplied by others; (r) failure of the installing contractor to install all of the components of the roof identified on the project registration form; (s) damage attributable to your negligence or your failure to properly clean, care for and maintain the roof, or (t) the existence of any as-built condition that is not equal to or better than the requirements of Soprema's published details and general requirements. Soprema does not warrant that the roof will remain free of ridges, cracks, blisters, wrinkles, fishmouths or other similar conditions. Soprema does not warrant that the color of the membrane will not fade nor that the color of any replacement membrane will match the color of the original membrane.
- This warranty does not become effective unless and until: (a) Soprema and any distributor from whom the installing contractor purchased products have been paid in full for all labor, materials, and supplies provided for or in connection with your roof; (b) the installing contractor has been paid in full by you for the installation of the roof, and (c) Soprema has been paid the warranty charge relating to this warranty.
- Soprema does not have any obligation to repair any leak unless and until: (a) all of the conditions to the warranty becoming effective have been satisfied, (b) Soprema determines that the leak is a warranted leak, (c) Soprema receives the written notice of claim referred to in the claim procedure (Form 901) in a timely fashion; and (d) you properly care for and maintain the roof.
- This warranty shall become null and void in the event of any of the following: any as-built condition exists on the roof that is not in compliance with Soprema's standard details and installation instructions (or other details accepted in writing by Soprema's Technical Department); any material change in the use (as described in the project registration form) of your roof or building after the substantial completion date; any subsequent work on or through the roof without Soprema's written approval of the methods and materials to be used; repairs or modifications to the roof made by someone other than an authorized roofer; or as otherwise provided herein. Emergency repairs to stop a leak will not void the warranty as long as they are reported to Soprema in writing within ten days.
- This warranty is transferable to any subsequent owner of your building once you satisfy all of the transfer requirements set out at [www.soprema.us](http://www.soprema.us).
- Soprema's failure at any time or from time to time to enforce any of the terms, conditions, or limitations of this warranty shall not be construed to be a waiver of such provision(s) or any other term, condition or limitation hereof.
- No suit or action whatsoever shall be brought against Soprema for the recovery of damages arising out of any claimed failure of the roof or for any breach of warranty unless, as a condition precedent thereto: (a) you have complied with all of the terms and conditions of this warranty applicable to you, and (b) the suit, action or proceeding is commenced within one (1) year after the cause of action accrues. The failure to satisfy either of these conditions precedent shall result in such claims being forever barred.
- This warranty is governed by and shall be construed and enforced in accordance with the internal laws of Ohio, without giving effect to any choice of law rules that may require the application of the laws of another jurisdiction.
- The terms of this warranty are severable so that any illegal, invalid or unenforceable provision, if feasible, shall be modified so that it becomes legal, valid and enforceable, or if not feasible, stricken, in either case without affecting the validity or enforceability of the remaining provisions.
- The employees, agents, sales representatives, and distributors of Soprema are not authorized to make any modifications or additions to this warranty, except through a validly executed rider. Any proposed changes made by you or anyone else that is not documented in a validly issued rider is rejected by Soprema and is null and void. This warranty, together with any riders expressly made a part hereof, sets forth the entire agreement between the parties with respect to your roof assembly. Soprema disclaims, and you waive, any affirmation of fact or promise that may have been made by Soprema or any of its employees, agents, representatives, or distributors that is not expressly stated in this warranty.
- The remedy set forth in this warranty is your **SOLE AND EXCLUSIVE REMEDY** against Soprema and Soprema's sole liability and obligation to you in the event the roof fails in whole or in part, regardless of whether you might otherwise be entitled to pursue a legal claim against Soprema, and regardless of the theory on which a claim might be based, including, without limitation, contract, tort, breach of warranty, strict and/or product liability, or misrepresentation.
- IN NO EVENT SHALL SOPREMA BE LIABLE TO YOU FOR ANY INDIRECT, CONSEQUENTIAL, SPECIAL, INCIDENTAL, PUNITIVE OR OTHER SIMILAR DAMAGES**, including, but not limited to, loss or reduction of profits, interruption of business, injury to or illness or death of persons, damage or loss caused by or attributable to indoor air quality (including, but not limited to, the presence or growth of mold, mildew or other similar substance in, on or about the roof assembly, walls, ceilings or other surfaces in your building), or damage or destruction of property, including your building or any of its contents, even if Soprema has been advised of the possibility, or even the likelihood, of any of these types of damages.
- Since Soprema does not practice the professions of architecture or engineering, you agree that the review, inspection or approval, express or implied, by Soprema or its agents or representatives of the construction or condition of your existing roof, roof deck or building, or the drawings, plans or specifications for your new or replacement roof, did not in any way create a warranty by Soprema of such items and was not a substitute for the professional judgment of an architect or engineer. Any such action or activity by Soprema was gratuitous, solely for the benefit of Soprema in determining whether or not to issue this warranty, and did not and does not subject Soprema or any of its agents or representatives to any responsibility or liability, whether in contract, indemnity, warranty, tort (including negligence), strict liability or otherwise.
- Any involvement by Soprema with respect to your roof, including any visits to the roof, whether prior to, during or after installation of the roof assembly, and any interaction with personnel involved in the installation of your roof, was or will be gratuitous and was or will be undertaken solely for the benefit of Soprema in determining whether or not to issue this warranty, whether or not a leak is a warranted leak, or what actions are necessary to repair a warranted leak. Accordingly, no such involvement expands the terms of this warranty nor subjects Soprema or any of its agents or representatives to any liability, whether in contract, indemnity, warranty, tort (including negligence), strict liability or otherwise. You are hereby advised that any roof inspections made prior to the date of this warranty were visual inspections only and that conditions might exist on the roof that are not in compliance with Soprema's standard details and installation instructions that were not noticed by the inspector, even if open and obvious. Noncompliant conditions, if they exist, have not been accepted by Soprema.
- Any document on Soprema's website that is referred to in this warranty is incorporated herein by this reference, the same as if fully rewritten herein.



**Page left**

**Intentionally blank**





**SOPREMA**

Corporate Office  
310 Quadral Drive  
Wadsworth, Ohio 44281

Tel: 800.356.3521  
Fax: 330.336.5073

August 9, 2011

Carolyn Feldman  
Tecta America South Florida  
1431 S W 30<sup>th</sup> Avenue  
Deerfield Beach, Florida

RE: Davie Water Treatment Plant  
Davie, Florida

To Whom It May Concern:

Please be advised that Tecta America South Florida of Deerfield Beach, FL is an authorized Soprema applicator in good standing and is qualified to install all specified Soprema roof products on the above referenced project. We are in receipt of your e-mail (08.09.11) information on the above-mentioned project. *The contents of this letter apply to this project only.* We understand that the roof assembly below is being proposed for installation on this project:

#### Specified Assembly

##### System Requirements:

- The Designer of Record has determined the anticipated negative pressures on this building to be as follows: Zone 1 = -53.87; Zone 2 = -96.96; Zone 3 = -150.83.
- A twenty-five (25) year warranty is requested, no wind rider is required.

##### Deck Type/ Insulation/Cover board:

- Concrete deck.
- The concrete is primed with Soprema Elastocol 500 Primer, or other ASTM D 41 asphalt primer at the rate of one gallon per one hundred to one hundred and fifty (100 – 150 ft<sup>2</sup>/gal) square feet per gallon.
- Three (3) inch thick ASTM C 1289, Type II, Grade I polyisocyanurate insulation fully adhered in Olybond Adhesive.
- One-half (1/2) inch per foot polyisocyanurate crickets fully adhered in Olybond Adhesive as required.
- One-quarter (1/4) inch thick DensDeck Prime fully adhered in Olybond Adhesive.

##### Roof System:

- One ply of Soprema Sopralene Flam 180 heat welded.
- One ply of Soprema Soprastar Flam heat welded.
- Wall base flashing one ply of Sopralene Flam 180 heat welded to a properly primed substrate as required.
- Wall cap flashing one ply of Soprema Sopralene Flam 180 Fr Gr heat welded.
- The finished roof slope is ¼:12.



August 9, 2011  
Davie Water Treatment Plant  
Davie, Florida

This assembly is approved for -232.5 psf maximum design pressure in Zone 1 (field) of the roof per Miami-Dade NOA No. 10-0408.04 (Exp. 03/01/16). Page 24-25.

This assembly is outlined as being rated for uplift ratings of FM1-510 by Factory Mutual in RoofNav, under assembly number 240775-224872-0 and by definitions outlined in Loss Prevention Data Sheet 1-29.

Additional Comments:

1. The attachment requirements herein relate solely to the new roof cladding to be installed atop the Florida Building Code (FBC) approved concrete deck. Soprema does not purport to address wind loading or adequacy of the structural roof deck, perimeter edge terminations, flashings or rooftop equipment.
2. Please forward the Project Registration Form (PRF) for this project at your earliest convenience. If the project criteria or other information already provided changes when submitting the PRF, then this letter may become null and void.

All of the materials used in the system are acceptable to Soprema for use in the system. None of the materials manufactured by Soprema contain asbestos. All of the components in the specified assembly meet UL Class A criteria and are FM Approved.

The Soprema SBS Roof Assembly must be installed according to the Project Specifications, Soprema's current Specifications, General Requirements and Approved Details. All other related roofing components must meet or exceed current editions of Soprema's Standards, Factory Mutual Loss Prevention Data Sheets, SMACNA's *Architectural Sheet Metal Manual*, ANSI/SPRI ES 1-98 "*Wind Design Standard for Edge Systems Used with Low-slope Roofing Systems*", NRCA's *Roofing and Waterproofing Manual*, Florida Building Code –Test Protocol HVHZ Roofing Application Standard (RAS) No. 111, "*Standard Requirements for Attachment of Perimeter Wood Blocking and Metal Flashing*" or International Building Code requirements or recommendations with the most stringent prevailing.

When this project is successfully completed according to Soprema's current editions of *General Requirements*, Approved Details and good general roofing practice, Soprema can offer a Twenty-five (25) Year No Dollar Limit (NDL) Roof Membrane Warranty Agreement that includes the ARBS blocking system. If any of the above information changes, then this letter may become null and void.

Please feel free to call if there are questions or if additional information is needed.

Sincerely,

**SOPREMA, INC.**



Patrick F. Black  
Corporate Technical Department

cc: Job File  
Roofing Technologies, Inc. – Sales Representative



**Page left**

**Intentionally blank**