

33 Must Have Flies for the

Bighorn River



Chapter 1

Nymphs

It is said that trout consume 90% of their diet below the surface. This is especially true on tailwater rivers where the density of insects is incredibly high. Tailwater rivers produce prolific populations of sowbugs, scuds, annelids, mayflies, caddis, midges and even stoneflies.



Section 1

Sowbugs, Scuds & Annelids

Scuds are fresh water shrimp and are plentiful in the Bighorn. They are especially effective in the spring and during high water. Scud patterns in grey, pink and orange are effective.

The Aquatic Sowbug lives on bottom and feeds off of aquatic vegetation, which is plentiful year round. They are probably the most important source of food for Bighorn trout and are available year round. Pink, grey and tan sowbug patterns are effective.

Aquatic worms are very plentiful in the Bighorn River. Worms are prevalent throughout the river especially in areas with higher concentrations of sediment. They are found in a wide variety of sizes and sizes and colors.

Bighornangler.com - Fly Shop, guides, boat rentals & lodging





Ray Charles

A must have sowbug and scud pattern.



Ray Charles

Size: 14, 16, 18, 20

Colors: Grey, Pink, Tan

Developed on the Bighorn River this sowbug/scud pattern has become a staple throughout the west. The soft hackle variation (shown left) is a great scud imitation, whereas the standard Ray Charles (no hackle) better represents a sowbug.

Hook: Standard Nymph

Thread: Fire Orange

Body: Ostrich Herl

Rib: Gold Wire

Back: Mylar Tinsel

Hackle: Hen Neck (optional)

KillerBug



Bighorn Killerbug

Colors: Grey and Pink

Sizes: 14, 16, 18

Our adaptation of Frank Sawyer's century old fly pattern has become a go to fly for us on the Bighorn. We tie this on a straight nymph hook in grey as a sowbug or on a scud hook in pink for a scud. The yarn is available for sale at the Bighorn Angler.

Hook: Standard nymph or scud

Thread: Fire Orange

Body: KillerBug Yarn

Rib: Gold wire optional on grey version

Firebead Sowbug



Firebead Sowbug

Color: Grey, Tan and Orange

Sizes: 14,16,18,20

A highly effective sowbug pattern from Yellowstone Fly goods that has been a staple on the Bighorn for years. Whether they are eating this fly as an egg or the firebead is just an attractor it works well either way. Add a firebead to a standard Ray Charles or a Soft Hackle Sowbug. Especially effective in the spring.

Hook: Standard Nymph

Thread: Fire Orange

Bead: Orange Firebead

Body: Camel or Pink Dubbing

Hackle: Hen Neck

Soft Hackle Sowbug

Simple and effective sowbug imitation



Soft Hackle Sowbug

Colors: Pink, Tan and Grey

Size: 12 - 20

Another staple sowbug pattern that works well all over the west. Size 16 and 18 are the most popular on the Bighorn River.

Hook: Standard Nymph

Thread: Fire Orange

Body: Camel or Pink Dubbing

Hackle: Hen Neck

Two - Tone Worm



Two Tone Worm

Color: tan/brown, red/brown

Sizes: 8 - 12

Bighorn Trout can be keying in on worms at any point throughout the season. The Two Tone San Juan Worm is a must have annelid imitation.

Section 2

Mayflies

Mayflies thrive in the cool, clean flows of tailwater rivers. The Bighorn is no exception. From March through November, anglers encounter a wide variety of mayflies that include: Blue Winged Olives, Pale Morning Duns, Tricos, Mahoganies and Pseudocleons.

Mayflies go through incomplete metamorphosis and transform directly from nymphs into duns. The nymphs go from an immature stage to a mature stage, ascend to the surface, break through the surface film, completely escape the nymphal shuck. Anglers should be prepared with patterns that represent every aspect of the life cycle where the nymphal shuck is present. Immature nymphs, mature nymphs, ascending nymphs and floating nymphs.

Bighornangler.com - Fly Shop, guides, boat rentals & Lodging



Quill Nymph



Quill Nymph

Color: Black, Brown, Olive and Cream

Sizes: 16 -20

The Quill Nymph is the most popular mayfly imitation we have on the Bighorn. It is an impressionistic pattern that works nearly year round.

Hook: Standard Nymph hook

Thread: Uni 8/0 to match

Tail: Pheasant tail fibers

Rib: Gold Wire

Abdomen: Thread

Thorax: Peacock

Wing: Mylar Tinsel

Wondernymph



Wondernymph

Color: Olive and Black

Size: 16 - 20

This pattern created by long time Bighorn guide Brad Downey is a must have ascending Blue Winged Olive nymph imitation. The movement of the wing makes it irresistible.

Split Case PMD



Split Case PMD

Color: PMD

Size: 16 - 20

This is a staple summer pattern on the Big-horn. When the PMD's are hatching there is no better nymph out there.

The tungsten version is great to fish as a drop-per.

Hook: Tiemco 3769 size 10-14

Tail: Coq de Leon

Thread: Olive 70 Denier Ultra Thread

Ribbing: 4x Tippet

Abdomen/Thorax: NS Emergence Dubbin-

Wing Buds: Black Stripped Goose Biots

Wingcase: Yellow Razor Foam

Juju Baetis



Juju Baetis

Color: Black

Size: 18 - 20

This Charlie Craven BWO nymph catches trout everywhere and is a staple pattern here on the Bighorn in Spring. Trailing this fly behind a sowbug is a great way to bring trout to the net.

Hook: TMC 2488, #16-22

Thread: White 10/0 for abdomen, Black 10/0 for thorax

Tail: Brown Hungarian Partridge Fibers

Abdomen: Two strands of brown Super Hair and one strand of black Super Hair. All three are wrapped at the same time.

Flashback: Pearl Fire-Fly

wingcase: Grey Flouro-Fiber

Thorax: Black tying thread

Legs/Emergent wings: Leftover butts of flouro-Fiber wingcase

Midges

Midge Hatches on the Bighorn

Here on the Bighorn the midge is the first significant emergence of the year and accounts for the first opportunity for anglers to find consistent dry fly fishing. Along with increased surface activity, anglers can find trout more actively feeding sub-surface on midge larva and pupa.

Midges go through a process of complete metamorphosis, similar to that of the caddis species. Successful Bighorn anglers will fully understand the larva, pupa and adult stages of this emergence and the fly patterns that imitate each of them.

Here on the Bighorn Midges can range in size from 16 – 24. Trout will selectively feed on any one size and/or color at any give time. Be prepared with an assortment of patterns. Midges can be found in a variety of colors such as black, red, olive, cream and root beer.



Zebra Midge



Zebra Midge

Color: Red, Cream, Black

Size: 18 - 22

The zebra midge may be one of the best imitations when it comes to matching the midge larva. Able to be tied in a range of colors, this pattern can imitate red midge, cream, and black with just a change in thread color. This pattern can be used in a variety of situations such as a trailer behind either a scud or a sow-bug.

This pattern is a staple, and a must have in any Bighorn anglers fly box.

Hook: Daiichi 1130 16-20

Thread: 8/0, Black

Rib: Fine Silver Wire

Body: 8/0 Black Thread

Bead: Copper, Clear Glass Bead, Silver Tungsten, Peacock glass

Blood Midge



Blood Midge

Color: Red

Size: 12 - 20

Designed to be a perfect imitation of a red midge larva, the blood midge is used on the Bighorn River religiously in the winter and spring months. The bright red micro tubing is used to make the pattern stand out, as actual red midge larva are bright in color. An important feature on the red midge larva is the body segmentation. With the help of the micro tubing, tiers can imitate the body segmentation rather well, more so than if they were only to use red thread.

Hook: Tiemco 2487

Thread: 8/0, Red

Body: Red Micro Tubing

Root Beer Midge



Root Beer Midge

Color: Root Beer

Size: 16 - 20

The rootbeer is tied with standard rust tubing to match the midge in the emerging pupa stage. The rootbeer is one of the best Bighorn Flies to use during the spring, when fish are keying in on emerging pupa. Trailed behind either a scud or sowbug is the most common method to fish this pattern. Fish key in on emerging pupa that are stuck in the surface film, so having the rootbeer trailed behind a dry fly can be rather effective. The antron yarn imitates the wing buds present on the pupae and the tubing indicates the segmented body.

Hook: K 3769#18 or Dai Riki 075

Thread: Black 8/0

Body: Standard Tubing Rust

Thorax: Adam's Gray Dubbing

Section 16

Juju Midge



Juju Midge

Color: Zebra or Olive

Size: 18 - 20

The Juju midge is a very realistic pattern as there are certain features it possess that help with its success. The Juju possess features of both the midge larva, and pupa which makes this a great all around fly pattern here on the Bighorn. Having different colors of the supreme hair gives the angler a variety of different styles to tie the Juju. Having red and black can help imitate a red midge larva, as black and olive help to properly imitate the midge in the pupa stage. The mix of this fine hair gives the body a clear segmentation close to that of actual larva and pupa. Anglers will notice white, yet bright flouro-fiber. This helps to properly imitate the wing pads breaking through the shuck.

Hook: Tiemco 2488

Section 4

Caddis

The Bighorn River sees emergences of both Black Caddis and Tan Caddis throughout the year, with Black Caddis by far being the most consistent each year.

Black Caddis provide steady fishing throughout the heart of the summer, from the end of July until mid-September. Black Caddis can be found in sizes 16-20, with both the pupa and adult being of great significance to the trout. Ascending pupa are a daily staple in the trout's diet throughout the summer. Once the pupa have reached the surface and emerge the trout will readily feed on the adults. The egg-laying caddis are also important to the fish also.

Tan Caddis typically show up in August and can be present into October depending on the water temperature. We don't always see Tan Caddis emerge each year on the Bighorn, but when we do the trout certainly take notice. The Tan Caddis are larger than the Black Caddis most often size 14. Anglers should carry a variety of pupa, adult and spent caddis with them.



Poodle Sniffer



Poodle Sniffer

Size 16 - 18

Created by Bighorn Anger Head Guide David Palmer, the Poodle Sniffer has become a staple pattern for matching the black caddis pupa. When comparing the poodle sniffer to an actual black caddis pupa the similarities are indistinguishable. The chartreuse ribbing is key to this pattern's success, as black caddis pupa have a distinct coloration of both black and chartreuse on the abdomen. The thorax is replicated by using 1 strand of peacock herl, as the coloring is nearly identical to the pupa. Once a black caddis hatch has begun the poodle sniffer can be a deadly pattern, especially utilizing it at the end of a drift with the swing.

Hook: 16-18 Scud, or Pupa

Thread: 8/0 Black

Rib: Small Chartreuse Wire

Abdomen: 3-4 Black Pheasant Tail

Olive Pheasant Tail



Olive Pheasant Tail

Color: Olive

Size 16 - 18

The pheasant tail can be tied in a variety of colors, but the olive in particular is a popular pattern to have here on the Bighorn once black caddis have arrived. During a heavy black caddis hatch having this fly in the correct sizes (18-16), will properly imitate and catch the eye of selective trout.

Hook: 14-20, TMC 3769

Thread: 8/0 Olive

Tail: Olive Ringneck Pheasant Tail Fibers

Body: Olive Ringneck Pheasant Tail Fiber

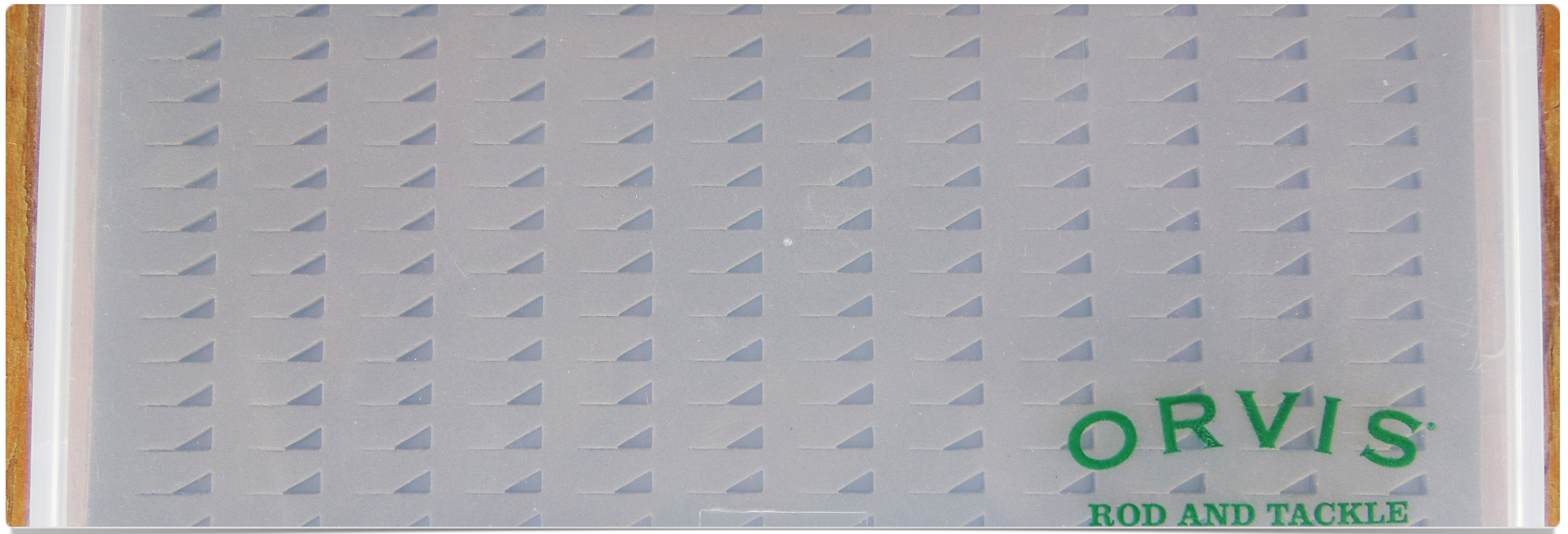
Rib: Fine Olive Copper Wire

Wing Case: Olive Ringneck Pheasant Tail Fibers

Thorax: Peacock Herl

Head: Brass bead is optional.

Fly Boxes for Nymphs



The new super slim line of fly boxes are perfect for organizing your Bighorn nymph boxes.

A large nymph on the Bighorn River is size 14, with most being in the 16 - 20 range. Super slim fly boxes are the perfect solutions for storing your flies. These boxes come in multiple lengths and widths and come with either slotted foam or with magnetic compartments. Because of their slender size these boxes fit easily into any vest, waist pack, chest pack or sling pack that you may carry.

I typically use the slotted foam for all of my sowbugs, mayfly nymphs and caddis nymphs; pretty much all of my flies in the size 14 - 18 range. For smaller flies such as midges in size 18 - 22 I

will use the super slim compartment box with a magnetic bottom, since these flies are harder to put into slotted foam.

Flies and fly boxes available in our [Online Store](#)

Movie 1.1 How to setup a nymph rig for fishing the Bighorn River



Bighorn Angler Co-Owner Steve Galletta demonstrates how to setup a two fly indicator nymph rig for the Bighorn River

Chapter 2

Dry Flies

Lorem ipsum dolor sit amet,
suspendisse nulla pretium, rhoncus
tempor placerat fermentum, enim
integer ad vestibulum volutpat.
Nisl rhoncus turpis est, vel elit,
congue wisi enim nunc ultricies
dolor sit, magna tincidunt.
Maecenas aliquam est ligula.



Section 1

Mayflies

Fishing a mayfly hatch on the surface, too many is the pinnacle of fly fishing. The Bighorn River offers tremendous opportunity to do just that. Along with a good presentation, pattern selection is important when fishing mayfly emergences on the Bighorn. Trout can be keying in on half in/half out emergers, floating nymphs, cripples, duns or spinners at any time. Carry a variety of imitations to represent every stage of the life cycle.

Bighornangler.com - Fly shop, guides, boat rentals & lodging



CDC Sparkle Dun

A must have Mayfly pattern!



CDC Sparkle Dun

Sizes: 14 - 20

Color: BWO and PMD

The perfect silhouette for just about every mayfly hatch. Carry them in every size and color for every hatch you are trying to imitate.

Hook: TMC 100

Thread: Uni 8/0

Tail: Z - Lon

Body: Superfine Dubbing

Wing: Trouthunter CDC

Sipper Emerger



Sipper Emerger

Sizes: 14 - 20

Colors: BWO and PMD

This is a great half in/half out mayfly emerger. The back end sits low in the water, yet the wing is visible to the angler.

Hook: Curved shank emerger hook

Thread: Uni 8/0 olive or cream

Tail: Z Lon

Abdomen: Turkey Biot to match

Thorax: Superfine Dubbing to match

Wing: Deer hair and CDC

Parachute Adams

The most basic of mayfly imitations is still one of the best!



Parachute Adams

Sizes: 14 - 22

Colors: Grey, Olive, Orange Sulpher, Yellow

Carry this dry fly in every size and color listed above so you are prepared for every Bighorn emergence you may encounter. The smaller sizes, 20 and 22 are a must for when midges are emerging.

Hook: TMC 100SPBL #14-22

Thread: 8/0 Grey

Tail: Brown and Grizzly Spade Hackle Fibers

Wing: White poly or calf tail

Hackle: Brown and Grizzly Rooster NecBody:

Superfine Dubbing

CDC ParaSpinner



CDC Paraspinner

Color: Rusty, Pmd, Bwo and Trico

Size: 14 - 22

Developed by Rene Harrop, the CDC Para Spinner has made its name known here on the Bighorn for being one of the most realistic and affective spinner patterns. Available in Bwo, Pmd, and Trico patterns, the Para Spinner has one feature that most other spinner patterns do not, and that is the highly visible CDC post. To make this pattern even more irresistible it is tied with an oversized hackle around the post, and clipped at an angle to give it a spent wing profile. The Rusty Para Spinner may be one of the most common patterns fished when matching spinners, as their colors can become maroonish/brown, and possess a white/grey colored wings.

Hook: Daiichi 1100 or dai riki 305, 320

Thread: 8/0 Uni

Cripple Thor



Cripple Thor

Color: Pmd or Bwo

Size: 16 - 22

Developed by a local angler here on the Big-horn, the Cripple Thor has become a staple pattern in all the fly shops. Designed to be an emerger, it represents the baetis struggling to break free from the shuck. This pattern is often trailed behind a slightly larger dry, but can be fished on its own with great results.

Hooks: Daiichi 1100

Wing: CDC 11/12(3pc) ,

Thorax: Super Fine Dubbing

Copper: Silver Small

Thread: Olive Dun 8/0

Tail: Hungarian Partridge Natural

Section 2

Midges

While available to the trout year round, midges are of the most importance to the dry angler in late winter and spring. Daily emergences occur from February through May depending upon water temperatures. Single midges typically begin emerging early to mid morning. By late morning into the early afternoon mating midges will begin to form midge clusters on the surface of the water.



Smokejumper



Smokejumper

Color: Black or Bwo

Size: 16 -22

Designed to sit low in the water the Smokejumper is tied on a curved hook, which represents the body form the midge pupa makes when breaking through the surface film. This fly's unique design allows it to hang with real emerging midges. The clump of CDC helps the fly stay visible, and helps to achieve a delicate presentation. This pattern is also available in a Bwo's form, and includes a trailing shuck to properly match the emerging baetis.

Hooks: Daiichi no:1130

Wing: Trouthunter CDC

Body: Thread:Black 8/0

Thorax: Peacock

Rib: Gray Thread(optional)

CDC Transitional Midge



CDC Transitional Midge

Color: Grey

Size: 18 - 22

Hook: Daiichi 1100

Tail: Grizzly Hackle

Thread: Gray 8/0

Body: Super Fine Adam's Gray or Trout Hunter

Wings: CDC Caddis Dun or natural dun

Developed by Rene Harrop, the CDC Transitional Midge represents the transition from pupa to adult, hints the reasoning behind its name. This pattern is designed to imitate the process in which the midge pupa has broken through the surface film, and is making its final effort to pull free from the pupal shuck. Tied with grizzly hackle, and grey trout hunter cdc, this pattern matches the midge coloring almost identical. Although it can be tough to see on the water, it is often rather effective trailed behind a slightly larger dry.

CDC Student Emerger



CDC Student Emerger

Color: Grey

Size: 18 - 22

This is one of those emerger patterns that works when nothing else will. It sits in the surface film and looks very natural to the fish. It is also very easy to tie. Trail it behind a larger dry when fish are sipping emergers. Great for midges and Bwo's.

Hook: Daiichi 1100

Tail: Light Brown Antron Yarn

Thread: Gray 8/0

Body: Quill Body

Thorax: Super Fine Adam's Gray

Wings: CDC Caddis Dun or natural dun

Hi Vis Griffith's Gnat



Hi Vis Griffith's Gnat

Size 18 - 22

The Hi Vis Griffiths gnat is a popular pattern here on the Bighorn in both the spring and fall months. Not only is it a representation of a midge cluster, but it is highly visible to the eye unlike the traditional Griffiths gnat. The Hi Vis post is key to this flies popularity, as visibility is one of the biggest concerns for most anglers. The grizzly hackle and peacock herl together are by still by far the best representation of a true midge cluster.

Hook: Daiichi 1100 or Tiemco 100)

Thread: Black 8/0

Body: Peacock herl

Hackle: Grizzly

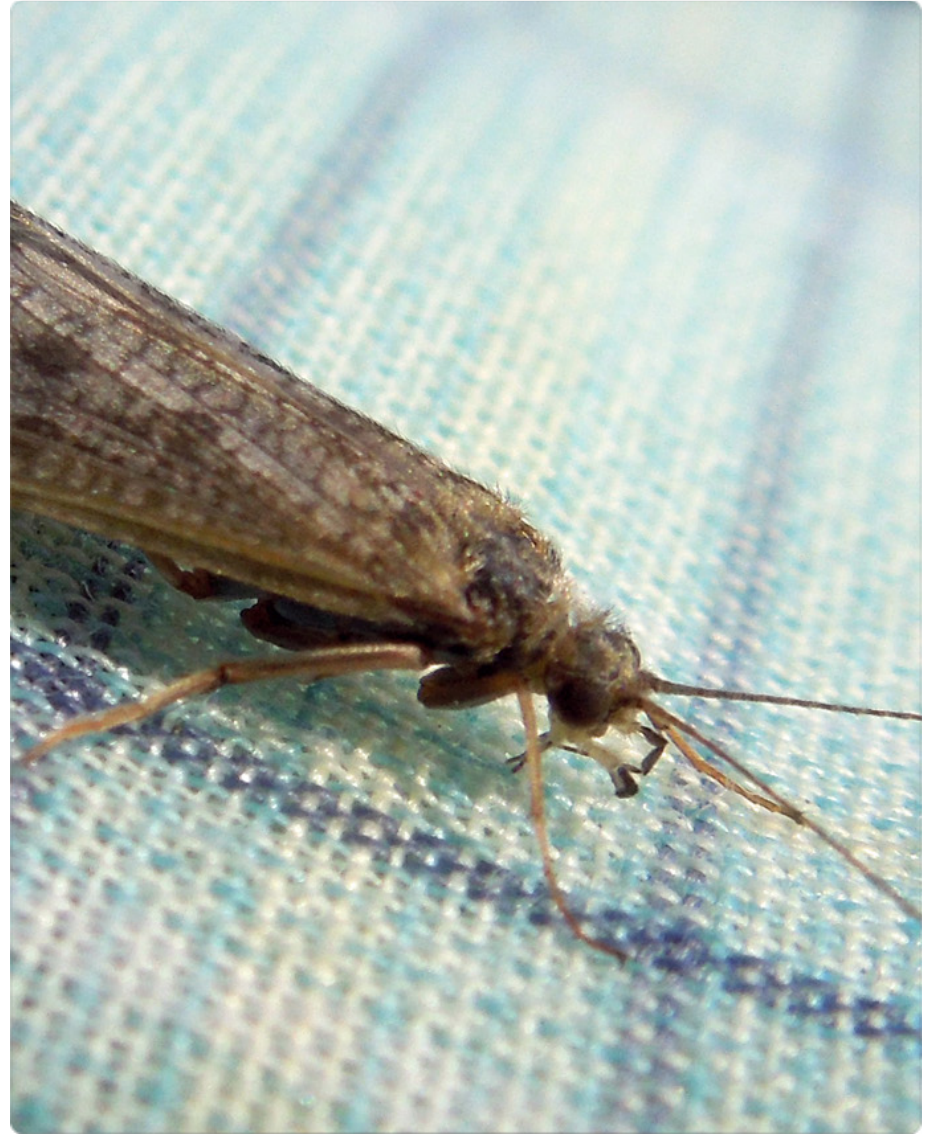
Parachute: Para post, poly yarn, Z-lon, or any other highly visible material in any bright color you prefer

Caddis

The Bighorn River sees emergences of both Black Caddis and Tan Caddis throughout the year, with Black Caddis by far being the most consistent each year.

Black Caddis provide steady fishing throughout the heart of the summer, from the end of July until mid-September. Black Caddis can be found in sizes 16-20, with both the pupa and adult being of great significance to the trout. Ascending pupa are daily staples in the trout's diet throughout the summer. Once the pupa have reached the surface and emerge the trout will readily feed on the adults. The egg-laying caddis are also important to the fish also.

Tan Caddis typically show up in August and can be present into October depending on the water temperature. We don't always see Tan Caddis emerge each year on the Bighorn, but when we do the trout certainly take notice. The Tan Caddis are larger than the Black Caddis most often size 14. Anglers should carry a variety of pupa, adult and spent caddis with them.



CDC Black Caddis



CDC Black Caddis

Color: Black

Size: 16 - 20

The Cdc black caddis is a simple but yet highly affective dry fly pattern here on the Big-horn. The cdc wing allows this fly to float well, but is still able to sit low in the surface like the naturals. The black wing is surprisingly visible on the water, and blends in with the hatch rather well. When comparing the black caddis to other patterns we feel that this is by far the closest imitation.

Hook: Daichi 1100

Thread: 8/0

Body: Grey, or Black superfine

Wings: Premium CDC Natural Dark Dun

CDC Bubbleback Emerger



CDC Caddis Emerger

Color: Black

Size 16 - 18

A low riding Black Caddis pattern that rides low in the water and fools the trout when they are being selective. Liberally applying dessicant to this pattern will keep it floating well.

*You are probably better off buying this pattern rather than tying it

Translucent Emerger



Translucent Emerger

Color: Tan or Brown

Size: 14 - 16

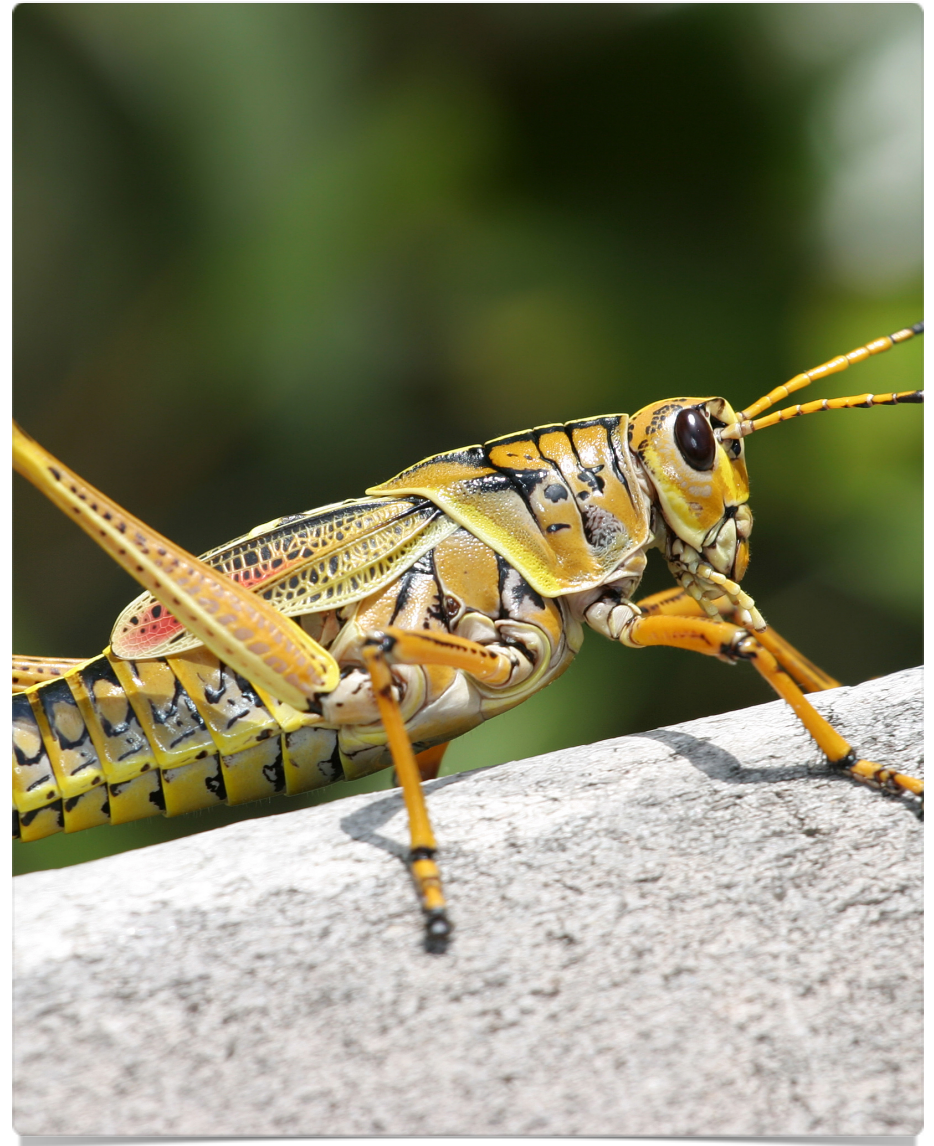
The deadliest tan caddis emerger ever made. Trail it behind a larger dry or fish it on it's own. Works well when fished with a twitch also.

*This is one fly that is difficult to tie and the dubbing is a mystery.

Terrestrials

Terrestrials are a staple part of the trout's diet throughout the summer months on the Bighorn. Ants, beetles and grasshoppers are all present throughout the warmest months of the year. Anglers can search for opportunistically feeding fish with a wide variety of terrestrial imitations.

Fishing a nymph dropped behind your dry fly is a great way to fish the edges of the river.



Bloom's Flying Ant



Bloom's Flying Ant

Color: Black and Cinnamon

Size 12 - 16

This is the best all-around ant pattern that I have found and works very well on the Big-horn. You can fish this fly as a searching pattern looking for opportunistically feeding fish or cast it over selectively feeding trout with equal success. The larger size 12 holds up a dropper fly well.

Hook: Daiichi 1180

Thread: Black 8/0

Body: superfine black

Wing: Parapost Light Gray, Parapost Wings

Fl. Orange or antron yarn fl pink

Hackle: Black and White Grizzly

Hi-Vis Beetle



Hi-Vis Beetle

Color: Black

Sizes: 12 - 16

A great all-around beetle pattern that Bighorn River brown trout tend to have a fondness for. I often fish this trailed behind a grasshopper. Simple and effective.

Hook: Mustad 3106B

Thread: Black

Body: black dubbing or peacock with black foam

Legs: black crystal flash or rubberlegs

Panty Dropper Hopper



Panty Dropper Hopper

Color: Tan

Sizes: 8 - 12

This has become one of my go to hopper patterns on the Bighorn. Its sits low in the water and has a realistic profile that the fish seem to really like.

*Buy don't tie

Fly Boxes for Dry Flies



Compartment boxes and foam slit boxes work best for holding smaller dry flies - size 16 - 22.

When organizing my Bighorn river dry flies, I typically use plastic compartment boxes. I carry one box for each hatch that I am fishing. Depending on how many different patterns I carry for each hatch, I typically use a box with 8 - 16 compartments. I prefer plastic compartment boxes above all else because I don't have to worry about the wings of the dry flies getting crushed. If you want to use a plastic box with foam just make sure both sides of the box are deep enough that when closed the flies don't touch.

I prefer to use the new Wheatley plastic compartment boxes or Myran compartment boxes. Both are very affordable and hold up well to years of use.

What I recommend for the typical Bighorn River dry fly angler is to carry one box for Blue Winged Olives, one for Midges, one for Yellow Sallies/PMD's, one for Caddis - Black and Tan, one for Tricos and another for Terrestrials.

Flies and fly boxes are available in our [Online Store](#)

Movie 2.1 How to Properly Dress a Dry Fly



Bighorn Angler Co-Owner Steve Galletta demonstrates how to properly dress a dry fly with the myriad of floatants available on the market today.

Chapter 3

Streamers



The Bighorn River is an underrated streamer river. With the high recruitment of juvenile trout in the river each year, larger trout find these smaller fish easy meals. There is also an abundance of whitefish and sucker minnows to prey on as well.

Clouser Minnow



Clouser Minnow

Color: tan/brown, olive/white

The Clouser imitates a baitfish as well as any other pattern, and can produce great results trailed behind a slightly larger streamer. The Bighorn River is full of young brown trout, rainbow trout and whitefish, which can be imitated by many different variations of the Clouser. The lead eyes tend to help the pattern perform a jigging motion, and brings the tail end up to keep it from snagging on the bottom. It is important not to overlook this pattern, but enjoy the simplicity of it and let it catch fish.

Hook: TMC 811S #2/0-6

Thread: 3/0 or 6/0 white

Eyes: Painted Lead Eyes, sized to hook

Belly: White Bucktail

Flash: Gold Krystal Flash or color of choice

Back: Chartreuse Bucktail

Sparkle Minnow



Sparkle Minnow

Color: Sculpin, Grey, Black and JJ

Size: 4 - 6

Flash has been all craze in streamers of late. This is the pattern that set that trend in motion. Trout cannot resist this flashy streamer that now comes in a variety of colors.

Hook - Dai-Riki #710 size 4

Bead - 7/32 Black Nickel Bead

Lead Wire - 0.030 Lead Wire

Thread - MFC Black 3/0

Body - Gold Ice Dubbing Brush

Underbelly - Pearl Ice Dubbing Brush

Tail - White, Olive Brown and Medium Olive Marabou

Dorsal Stripe - Black Sharpie

Peanut Envy



Peanut Envy

Size: 4, 6

Colors: black, white, olive

This articulated streamer designed by streamer guru Kelly Galloup is a big fish catching machine. It has a great profile and motion in the water that tends to attract large trout.

Thread: Ultra GSP 100 or 200

Back Hook: Daiichi 1750 #6 or any 3X-4X

Long, Straight Eye Streamer Hook

Tail: Olive marabou, w/ 2-4 strands of Copper Flashabou on each side

Body: Olive Ice Dub

Hackle: Olive or Sculpin Olive Strung Rooster Saddle

Rib: Copper Ultra Wire

Legs: Golden Yellow/Pearl Flake Barred Crazy Legs

Wing: 1-2 Plumes of Olive Marabou

Connection: Beadalon .038 nylon coated stain-

Section 4

Resources Page

If you have any questions about any of the content that you have seen here feel free to give us a call 406 - 666 - 2233 or send us an email - info@bighornangler.com

Bighornangler.com - Guided fly fishing, boat rentals, lodging, full service fly shop

Bighornflyfishing.com - Fishing report and blog with in depth information pertaining to the the Bighorn River.

Flyshopexperts.com - Our online store where you will find all of the patterns featured in this e book along with a host of other products. USE COUPON CODE: ebook TO RECEIVE 10% OFF YOUR NEXT PURCHASE

