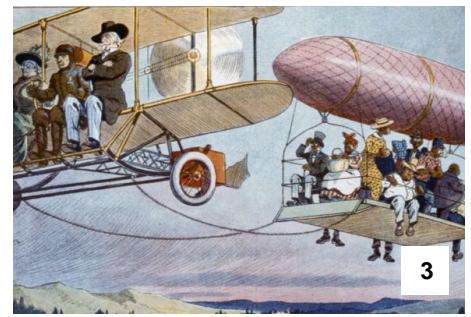




1



2



3



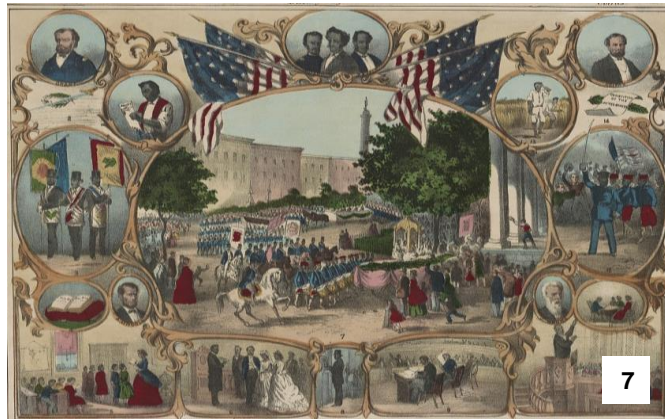
4



5



6



7



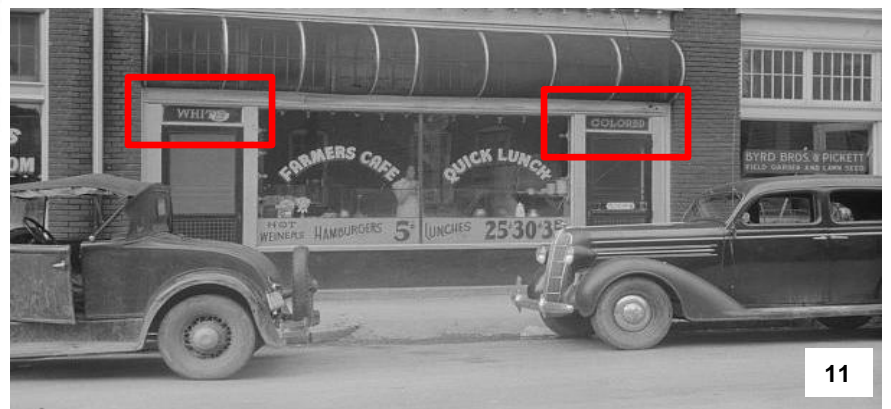
8



9

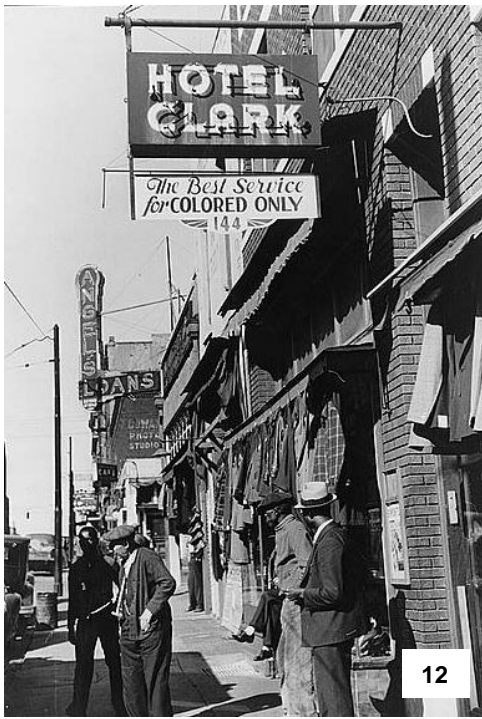


10



11

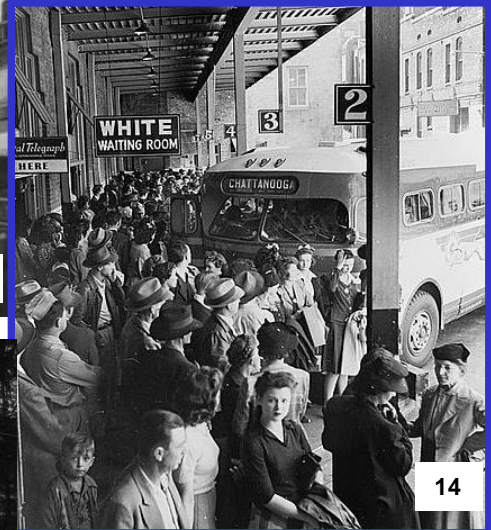
Portrait image: Sheet music cover, 1847. 1. A sign directed blacks to segregated picnic grounds at Lewis Mountain, Shenandoah National Park, 1936; Texas segregation sign in Dimmit, Texas, n/d; 3. Caricature showing an airplane with white people, towing a blimp with a platform on which are seated African Americans, 1913; 4. Sign over laundry shop, n/d; 5. Japanese American child being evacuated with his parents to Owens Valley Internment Camp, c.1942; 6. Segregated streetcar in Alabama, n/d; 7. Celebration of the 15<sup>th</sup> Amendment, 1869 8. Man drinking at a North Carolina segregated water fountain, c.1950; 9. Sign distributed by Lonestar Restaurant Association, Dallas, Texas, n/d; 10. Sign in restaurant, Sisseton, South Dakota. September 1939; 11. Separate doors for "White" and "Colored," Durham, North Carolina. May 1940.



12



13



14



15



16



17



18



19

12. Secondhand clothing stores and pawn shop on Beale Street, Memphis, TN, October 1939; 13. Bus station in Durham, NC, May 1940; 14. Waiting for the bus, Memphis, TN, September 1943; 15. A fish restaurant for Colored, Memphis, TN. June 1937; 16. Bus rest stop outside Louisville, KY, September 1943; 17. Sign at Greyhound bus station, Rome, GA, September 1943; 18. Street scene showing segregated bathroom, Durham, NC, May 1940; 19. Restaurant window sign, Lancaster, OH, August 1938; 20. Tourist cabins for Colored, SC, June 1939.



20



21



22



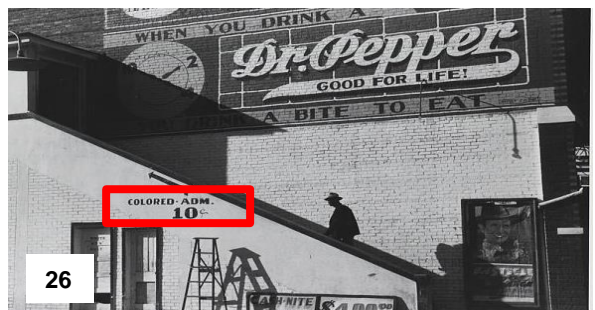
23



25



24



26

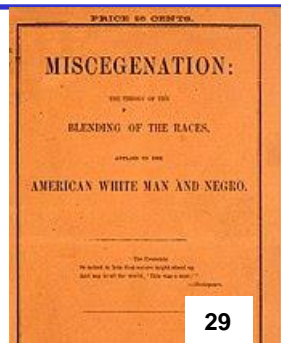


27

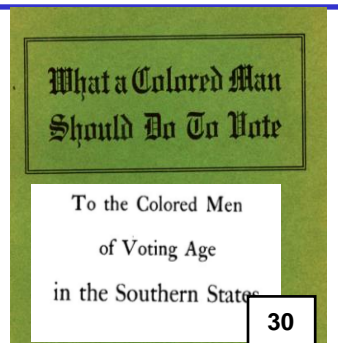
21. A cafe in Durham, NC (sign says separate door for "White"), November 1939; 22. A drinking fountain on the county courthouse lawn, Halifax, NC, April 1938; 23. Movie theatre, Delta area, MS, November 1939; 24. Sign above Colored movie theatre, Waco, TX, November 1939; 25. Beale Street, Memphis, TN, c. October 1939; 26. Negro man entering movie theater by "Colored" entrance, Delta area, MS, October 1939; 27. A lunchroom serving White & Colored, Belle Glade (vicinity), FL, January 1939.



28



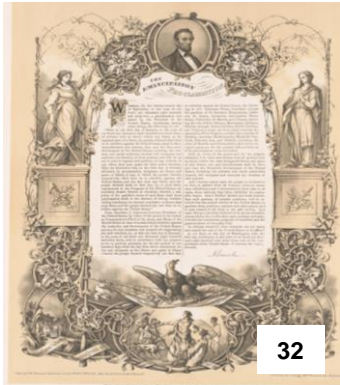
29



30



31



32



33



35



36



34

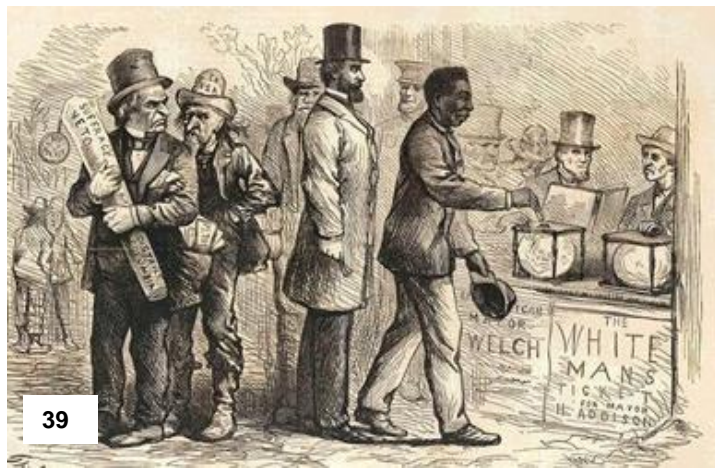


37

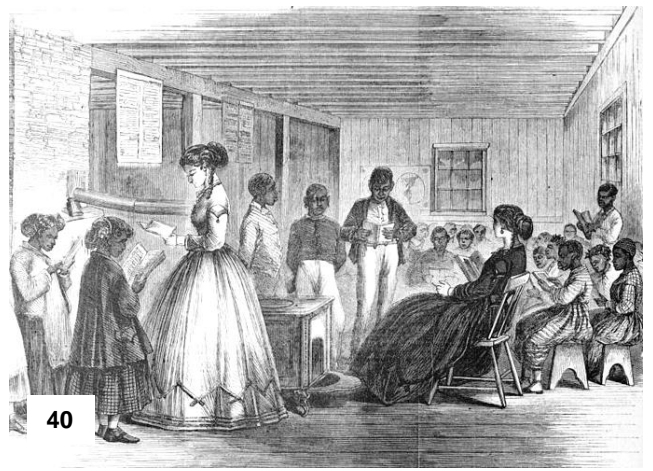


38

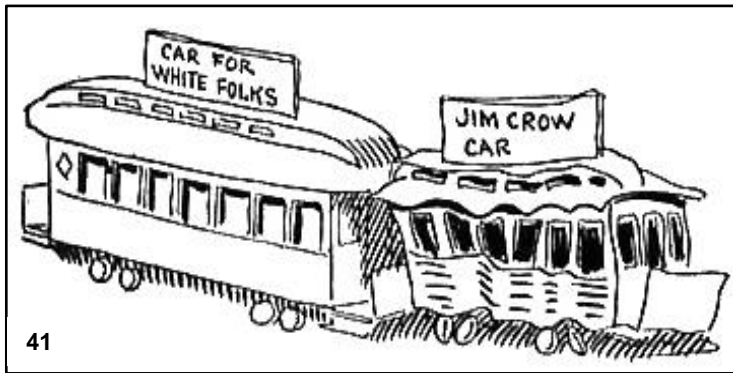
28. A Jim Crow Law sign for bus segregation in North Carolina, n/d; 29. A fake pamphlet that Democrats wrote to show, incorrectly, that Lincoln favored interracial marriage, 1864; 30. Book cover, c.1900; 31. Young boys harassing the Horace Baker family, the first African American family to move into the all-white Delmar Village neighborhood of Folcroft, Pennsylvania, August 30, 1963; 32 Emancipation Proclamation, c 1863; 33. Demonstrators holding signs during the March on Washington, August 28, 1963; 34. President Lyndon B. Johnson signs the 1964 Civil Rights Act, July 2, 1964; 35. Man drinking at a water cooler in the streetcar terminal, Oklahoma City, OK, July 1939; 36. Yard sign, Detroit housing project, c.1942; 37. Sign in Knoxville, TN theatre, c.1924. 38. Migrant workers from Florida on their way to harvest potatoes in Cranbury, New Jersey. The photograph was taken near Shawboro, North Carolina, c.1950.



39



40



41



42



43



44



39. Illustration showing at top of page, several men at a polling place where an African American man places his ballot in the box for "Re[pub]lican Mayor Welch" which is next to the empty ballot box for "The White Man's Ticket for Mayor H. Addison.", 1867; 40. Recently freed slaves learn to read in the Misses Cookes' School Room, Freedman's Bureau, Richmond, Virginia, c.1866; 41. "White" and "Jim Crow" railcars; part of cartoon *Mississippi at the St. Louis Fair*, 1904 (see caption on next page); 42. A "Poll Tax" (Often referred to as a "head tax")se is a fixed amount of money per person levied on adults so they could vote. These taxes were instituted to help prevent Blacks and poor whites from voting, n/d; 43. African American school children holding signs of protest against Norfolk, VA's school board's treatment of Black teachers, 1939; 44. "Blacks Only" (left) and "Whites Only" men's restrooms at Virginia's Fredericksburg & Spotsylvania National Military Park, 1936.

MISSISSIPPI AT THE ST. LOUIS FAIR



45. This cartoon, "Mississippi at the St. Louis Fair", satirizes the state of Mississippi visiting the 1904 "Louisiana Purchase Exposition" World's Fair in St. Louis, Missouri. It was designed to show that Mississippi's reputation for racism and suppression of the African American population was already well established at this time. Note: John Sharp Williams, "The Idol of Mississippi," was a prominent member of the Democratic Party from the 1890s through the 1920s, served as the Minority Leader of the U.S. House of Representatives from 1903 to 1908 and was one of Woodrow Wilson's strongest supporters. He gave a classic denunciation of the Black race when he declared on December 20, 1898: "You could ship-wreck 10,000 illiterate white Americans on a desert island, and in three weeks they would have a fairly good government, conceived and administered upon fairly democratic lines. You could ship-wreck 10,000 negroes, every one of whom was a graduate of Harvard University, and in less than three years, they would have retrograded governmentally; half of the men would have been killed, and the other half would have two wives apiece."

*Photograph credits:* Unless otherwise identified, all images are in the Public Domain. Images with "LC-" are from the Library of Congress. Portrait image:

[https://commons.wikimedia.org/wiki/File:Jim\\_Crow\\_Jubilee\\_\(Boston\\_Public\\_Library\).jpg](https://commons.wikimedia.org/wiki/File:Jim_Crow_Jubilee_(Boston_Public_Library).jpg),

Call Number: no. 35 of \*\*M.450.172; 1. National Park Service Archives;

2. <https://www.nps.gov/heritageinitiatives/latino/latinothemestudy/images/Discrimination.jpg>;

3. LC-USZC2-1058, Erhart from Puck, 2-26-1913;

4. <https://guides.ll.georgetown.edu/c.php?g=592919&p=4172697>; 5. LC-USF33-013296-M5;

6. <http://www.encyclopediaofalabama.org/article/h-1248>, Courtesy of the Birmingham Public Library Archives; 7. LC-USZC4-2399, Thomas Kelly;

8. <https://pt.slideshare.net/ehfodor/chap19-11530853>;

9. Black History Collection, Manuscript Division, Library of Congress (024.00.00),

[//www.loc.gov/exhibits/civil-rights-act/segregation-era.html#obj024](http://www.loc.gov/exhibits/civil-rights-act/segregation-era.html#obj024); 10. LC-USF33-1661-M3;

11. LC-USF33-20513-M2, Jack Delano.

12. LC-USF33-30637-M3, Marion Post Wolcott; 13. LC-USZ62-125806, Jack Delano;

14. LC-USZ62-87187, Esther Bubley; 15. LC-USF34-17593-E, Dorothea Lange; 16. LC-

USZ62-62919, Esther Bubley; 17. LC-USZ62-75338, Esther Bubley; 18. LC-USF33-20522-

M5, Jack Delano; 19. LC-USF33-6392-M4, Ben Shahn; 20. LC-USF34-51945-D, Marion Post Wolcott.

21. LC-USF33-30700-M1, Marion Post Wolcott; 22. LC-USZ62-100414, John Vachon;

23. LC-USF34-52508-D, Marion Post Wolcott; 24. LC-USF33-12498-M2, Russell Lee;

25. LC-USF33-30639-M1, Marion Post Wolcott; 26. LC-USZ62-100414, Marion Post Wolcott;

27. LC-USF34-50500-D, Marion Post Wolcott.

28. [https://commons.wikimedia.org/wiki/Jim\\_Crow\\_Laws](https://commons.wikimedia.org/wiki/Jim_Crow_Laws);

29. <https://nacaomestica.org/blog4/wp-content/uploads/2017/02/Miscegenation-The-Theory-of-the-Blending-of-the-Races.pdf>; 30. Book cover, Library of Congress Control Number,

2838850, Press of E.A. Wright, Philadelphia; 31. LC-USZ62-122636; 32. LC-DIG-pga-0704;

33. LC-DIG-ds-04000; 24. White House Press Office, Cecil Stoughton; 35. LC-USZ62-80126,

Russell Lee; 36. LC-USW3- 016270-E; 37. <https://ggwash.org/tag/Columbia+Heights>

38. LC-USF34-040841-D

39. LC-USZ62-139438, Thomas Nast; 40. LC-USZ62-121633, Frank Leslie's illustrated

newspaper, v.23, 1866 Nov. 17, p. 132, Jas. E. Taylor; 41. See caption on next page;

42. Public Domain; 43. LC-USZ62-90145, Visual Materials from the NAACP Records;

44; National Park Service.

45. *Mississippi at the St. Louis Fair* cartoon by John T. McCutcheon, scanned from the book *The Mysterious Stranger and Other Cartoons by John T. McCutcheon*, New York, 1905, <https://commons.wikimedia.org/wiki/File:MississippiAtStLouisFairMcC.jpg>